

# Dintel Wall Track Fastening – 3 possible options

1. Gas actuated direct fastening



2. Battery actuated direct fastening



3. Traditional anchor fastening



# 1. Gas actuated system for direct fastening Dincel track



## Description

GX 120 gas tool

Magnetic Washer Holder

X-GN 20MX Gas Nails +  
GC 21 Gas Can

R36 Washers

## Item Number

274638

39619

226933

407951

## Key features

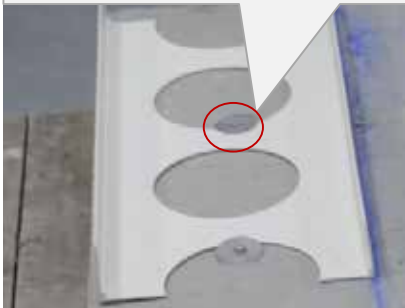
- High fastening rate for high productivity
- Drives up to 750 fasteners with a single gas can
- Built-in gas gauge to indicate how much fuel remains in the tank

- Magnetic fastener guide to hold the washers in place during shooting
- Easy to attach to the tool

- Fastening to concrete, block and masonry
- Sensor on the gas can to maximise performance and reliability with GX 120 system
- 750 nail + 1 can package

- Steel washers to prevent cracking of the plastic track
- Easily attaches to the washer holder for increased productivity

**Shoot washer into concrete,  
over-lapping the Dincel track**



# 2. Battery actuated system for direct fastening Dincel track



**Description**

**BX 3 Battery actuated tool**

**Magnetic Washer Holder**

**X-P 20 B3 MX Nails**

**R36 Washers**

**Item Number**

**3542837**

**2101256**

**2105404**

**407951**

**Key features**

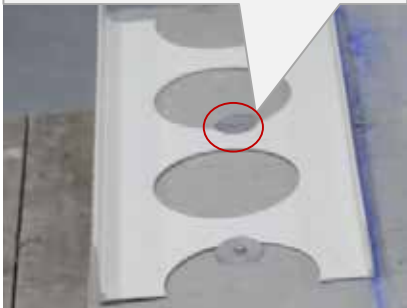
- Combustion-free tool for driving nails into concrete, block and steel
- 600 shots to full charge on 5.2Ah Li-ion battery
- High user comfort due to low compression force required, low noise and low recoil
- Kit is supplied with 2 batteries and 1 charger

- Magnetic fastener guide to hold the washers in place during shooting
- Easy to attach to the tool

- Ballistic point for universal base materials – steel and concrete
- High hardness of the nail gives it best performance in hard concrete

- Steel washers to prevent cracking of the plastic track
- Easily attaches to the washer holder for increased productivity

**Shoot washer into concrete, over-lapping the Dincel track**



# 3. Anchors for Dincel track fastening



**Description**

**HPS Impact anchor**

**Hammer drill bit TE-CX  
6/17 MP8**

**TE 4-A22 Cordless rotary  
hammer**

**SID 22-A Cordless drill-  
driver and bit set**

**Item Numbers**

260349  
230516  
260350  
260351  
260352

2021998

3542555

3542544  
2039186

**Key features**

- For universal use on many materials, including perforated brick and block
- The screw can be driven or unscrewed using a screwdriver
- Quick impact installation using a hammer

- New solid carbide head for less wear
- The indicator mark at the head verifies suitability for setting anchors as long as the mark is visible
- Good resistance to high temperatures
- Fast & accurate drilling progress thanks to flute design

- Hilti CPC Li-ion technology featuring accurate battery charge status display
- Compatible with the entire Hilti 22 volt platform (incl BX 3 direct fastening tool)
- High battery capacity – drills more holes per battery charge than other cordless rotary hammers in the same class

- High-efficiency brushless motor for long lifetime and more work per charge
- Compatible with the entire Hilti 22 volt platform (incl BX 3 battery fastening tool)
- 3 gears and electronic speed control for easy switching between different driving speeds
- Can also drive HUS screw anchors into concrete

**Drill hole, tap anchor in and then drive in with cordless**

