

ProtectWall: 1.5mm & 1.5CR

INSTALLATION Instructions Heterogeneous Vinyl wallcovering

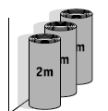
04/2022

CONDITIONS AND REQUIREMENTS

- Application can be done to smooth, dry, clean, hard and sound walls of concrete, plaster, hardboard, plywood and fibreboard. Board material must be firmly fixed to avoid moving or warping, as only one side is covered. Boards and similar substrates should have a moisture content of 8% (equivalent to 40% RH at 20° C). Concrete and plaster must have a relative humidity level of less than 85% RH (in UK and Ireland 75% according to BS 8203).
- The wall surface must be strongly enough bonded to take the weight of the material.
- The wall plumb deviation should be less than 5mm on the 2,5m height.
- A concrete or cement wall must normally be smoothed using a water-resistant filler/levelling compound to achieve a smooth and sound surface suitable for gluing.
- Do not install on walls painted with oil paints.
- Always apply a suitable primer on the substrate prior to any installation.

PREPARATION

- Dust and loose particles must be thoroughly removed. Highly absorbent or variably absorbent substrates should be sealed with suitable primer. The primed surface must be completely dry before laying commences.
- When applying smoothing compounds, use compounds that meet the minimum requirements in the building standards.
- Use only a lead pencil for marking. Note that any marks made with felt-tipped pens, permanent and non permanent ink markers, ball point pens etc. can cause discoloration due to migration.
- If material from several rolls is used, they should have the same manufacturing serial numbers and be used in consecutive order.
- Prior to laying, allow the material, adhesive and subfloor to reach room temperature, i.e. a temperature of at least 15°C. The relative air humidity should be 35-65% . Rolls must be stored indoors at least 24 hours before installation, preferable 48 hours.
- The rolls should be stored on an even surface. Any faults in the material must be reported immediately to your nearest sales office.
- Always quote the colour and roll numbers, which are stated on the label.



Store 2m rolls upright in a safe position with distance between the rolls.

INSTALLATION

■ Installation should be carried out at room temperature between 15°C to 28°C. Substrate temperature must be at least 10°C. The relative air humidity in the premises should be 30-60%. Maintain same temperature and humidity for at least 72 hours after installation.

■ Cut the sheets to length and lay them down to acclimatise and relax prior to installation for at least 24h. This is particularly important for longer lengths.

■ The sheets are fully adhered with an adhesive approved for Tarkett's vinyl sheet. Apply about 150 to 200 g/m² using the recommended trowel (TKB A4).

See the adhesive manufacturer's instruction regarding coverage, open time etc. Example of suitable adhesives can be found at professionals.tarkett.com

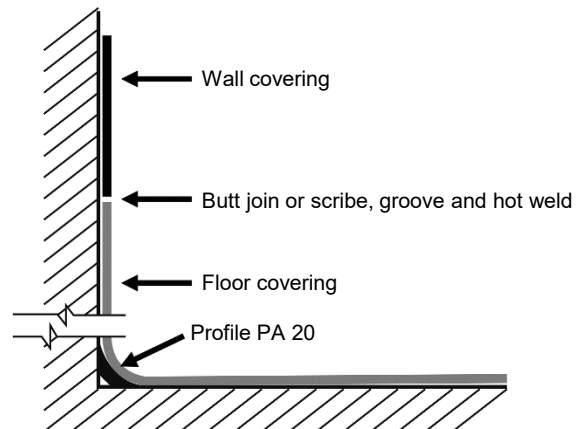
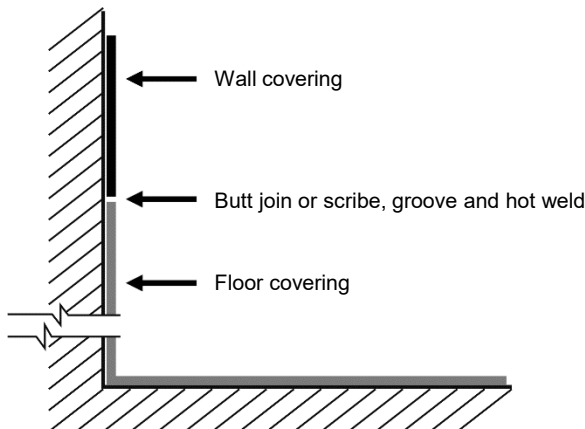
■ The assembly time depends on the type of substrate, its absorbency, the temperature and air humidity in the premises. The adhesive must be tacky enough to secure the position after assembling and at the same time wet enough to secure the over-wetting and bonding of adhesive to the backing of the material.

■ **Sheets must be installed so that colour differences are avoided. Reverse sheets whenever possible, overlap and cut edges if needed.**

■ Rub the face surface thoroughly using a piece of board with a rounded edge to ensure that the floor covering makes good contact with the adhesive and that all air is expelled. Make sure that the tool used for rubbing down the floor covering does not scratch the surface. Use a wall roller and roll crosswise over the wall to ensure final bonding.

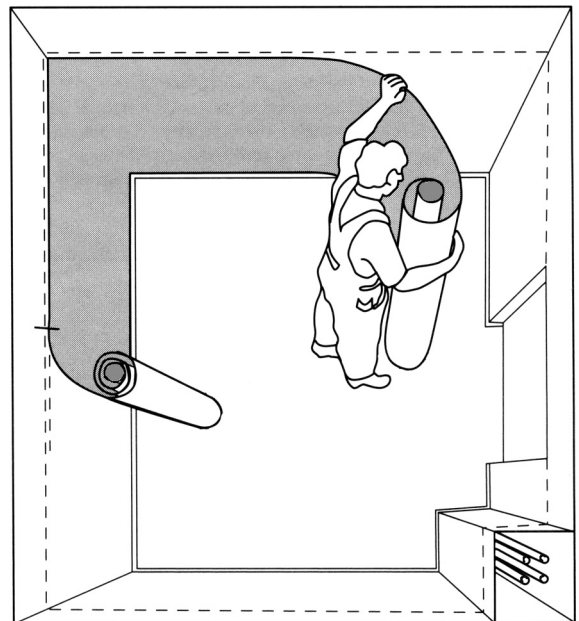
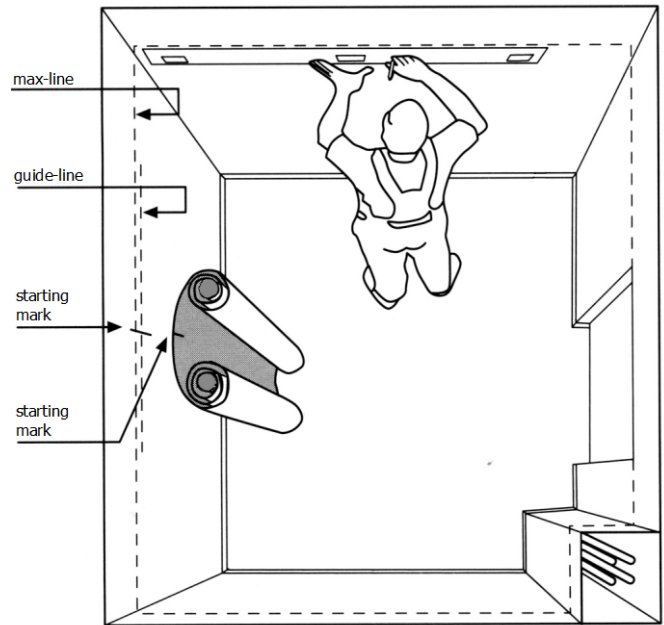
JUNCTION WITH THE FLOORCOVERING

- In case of cove forming (minimum 10 cm high) : hot weld wallcovering and floorcovering together (max. out of level : 0,5mm)
- If not : install a skirting (see accessories KS61, S60 and S100)



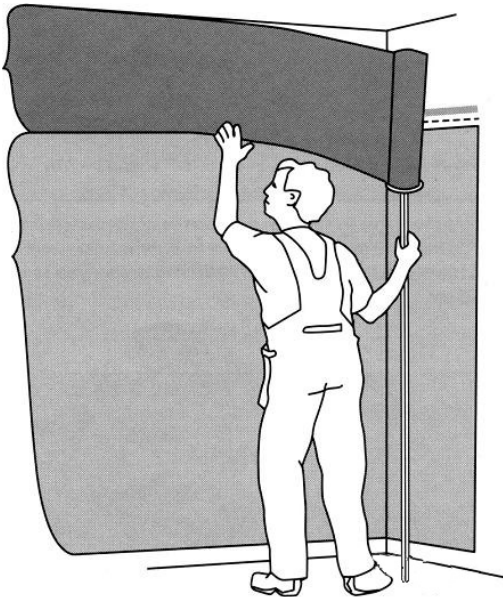
HORIZONTAL INSTALLATION

- Check for any rake on walls and corners. Draw a horizontal line (max-line) 207 cm above the finished floor level!. This is the maximum height to allow an overlap of 3 cm on the covered flooring.
If the flooring is not covered, draw the line at 200 cm high maximum.
Note: Only use a lead-pencil for marks and lines.
- Measure the circumference of the room and make a mark halfway along the max-line or at another suitable starting point (depending on pipes, outside corners, etc).
- Cut the sheet and roll it with the back facing outwards and make a corresponding starting mark on the back of the sheet.
- Roll up the rest of the cut sheet (poss. on tubing) up to the mark so that two joining "rolls" are obtained.
- Draw a new horizontal line, approximately 1 m long (the starting point guide-line) where the wall covering is to be initially applied at a height of 200-207 cm, depending on the rake of the corners, etc.
Note: Corners that rake outwards will create a shortage of material at the bottom after the turn.
- Apply adhesive in accordance with manufacturer's instructions. You can use a 'lambs' hair' roller but if you prefer to apply the adhesive with a fine-notched trowel, we recommend a TKB A4 model and you can even out the adhesive with a roller.
- Apply adhesive to the surface of the wall up to the first max-line. The wall covering should be applied during the wet tack stage. The assembly time depends on the type of substrate, its absorbency, the temperature and air humidity in the premises. See the adhesive manufacturer's instruction regarding coverage, open time etc. If you are unsure, you should not cover large areas with adhesive.
- **Advice:** always start adhesive application from the bottom to the top as adhesive is drying quicker on top of the wall.
- Position the rolls so that the markings on the rolls and the markings on the walls are aligned. Apply the rolls one at a time.
- Trim the wall covering's overlap to the floor covering before the adhesive has dried.
- In case of long sheet installation, we recommend to use contact adhesive at each end of the sheet to lock the installation.
- **Note:** Horizontal installation can be performed also at 1m height for wall basement.
- **Advice:** in case of long horizontal installation, do not hesitate to use our Tarkett Unroller.



THE BORDER (optional)

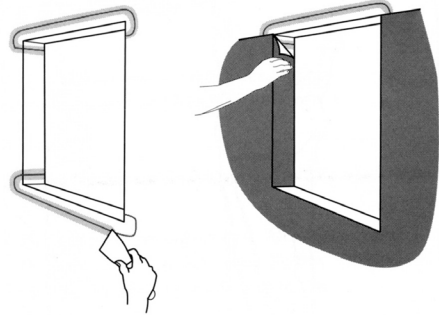
- Make a mark on the wall covering which indicates where the bottom of the border finishes. Always proceed from the max-line. Allow a 3 cm overlap.
- Fill along the top edge of the wall covering with a water-resistant levelling compound or use a pre-fabricated diminishing profile.
- Measure the border and cut it to the right length (and width if applicable). Roll it onto a suitable length of plastic tubing.
- Apply adhesive to the area where the border is to be located. Be very careful to ensure that the adhesive goes all the way down to the markings at the overlap.
- The border is applied following the markings. Preferably begin in a corner in the dry area. Check regularly for excess wetting between the border and the wall covering. Continue the border at least 2 cm on the other wall and finish there. Alternatively the border can be joined over the door.



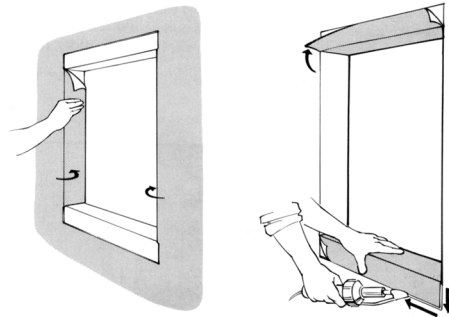
- Be extra careful when washing off residues of adhesive at the border's overlap. Use clean water and a detergent suitable for removing adhesive.

WINDOWS (specific case)

- Alternative 1: At window-recesses apply loose pieces first in the top and bottom recesses then fill the edges. The wall covering is rolled out over the window area and is then folded into the reveal. The overlap to the bottom recess should be sealed.



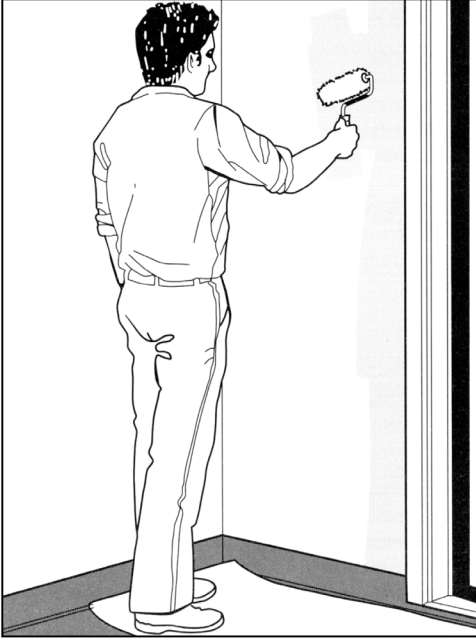
- Alternative 2: At window-recesses the wall covering is rolled out over the window area and is then folded into the reveals. Loose pieces are inserted at the bottom recess, and at the top recess where necessary. The loose pieces are joined to the wall covering with welded seams.



For best result , extra heating and pressing is necessary to secure a good bonding at overlapping areas.

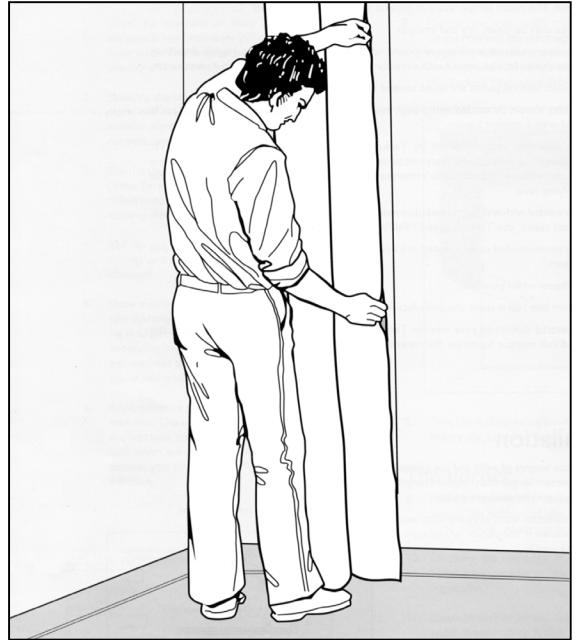
VERTICAL INSTALLATION

- Start installation at doorframe of an unobstructed wall or use a carpenter's level or plumb line on the wall to mark vertical starting lines for each sheet. Adjust plumb lines to install edge-to-edge (without overlap) when possible. In case of any deviation, do not hesitate to overlap the sheets and to scribe the joint before adhesive has dried completely. Only use a lead-pencil for marks and lines.
- Note:** Material width is approximately 200 cm. Plan the installation so that seams are a minimum of 20 cm away from inside and outside corners.

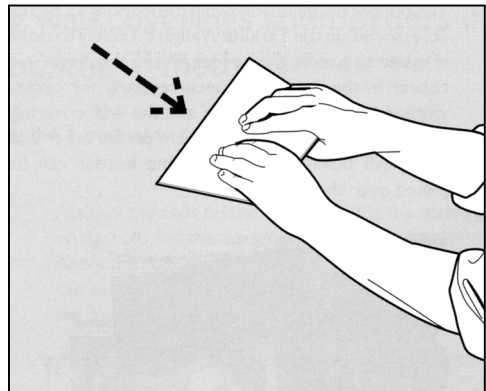


- Apply adhesive on the wall area where the first sheet will be installed and a few cm past the seam edge. Apply adhesive in accordance with manufacturer's instructions. You can use a 'lambs' hair' roller but if you prefer to apply the adhesive with a fine-notched trowel, we recommend a TKB A4 model and you can even out the adhesive with a roller.

- Pre-cut sheets slightly longer than the height of the wall and allow lay flat and stabilizing. Trim salvage edge, if necessary, on side that will be aligned with plumb line.
- Back roll the wall material (face in) in the long direction. For each additional sheet of unobstructed wall, apply adhesive as before and unroll sheet into. Reverse alternate sheets, when possible, to avoid shading effect.



- Place the edge of wallcovering on plumb line and unroll into adhesive. Roll out the sheet little by little into the adhesive.
- Press the sheet firmly using a piece of board with rounded edge or equivalent tool. Work from top down and from the middle to the sides of the sheet.
IMPORTANT: Make sure you remove all trapped air.



INSIDE CORNERS

- Measure the distance from the last installed sheet passing around the corner of adjacent wall equal to the width of the material. Mark a vertical line at this distance.
- Apply adhesive on the wall and unroll wallcovering in same manner, starting at the plumb line and working towards the corner.
- Protectwall can be pressed in the angle, using a hot air blower to soften the material and fine cork-press.
- Specific case of Protectwall 1.5 CR (Clean Room) : use a cove-former (PA15) to ensure a correct angle forming and use the corner roller to create the corner, while heating the covering with the hot air blower.

OUTSIDE CORNERS

- Measure the distance from the last installed sheet passing around the corner of adjacent wall equal to the width of the material. Mark a vertical line at this distance.
- Report the corner distance on the back of wallcovering and draw also lines corresponding to 100 mm on each side of the corner.
- Apply contact adhesive to the wall corner area and back of wallcovering material with a brush corresponding to 100 mm on each side of the corner and allow drying within the actual adhesives open time.



- Apply adhesive to remaining area of wall and position sheet. Heat and stretch slightly the wall material around the corner at the same time as it is pressed firmly into the adhesive.
- To ease the outside corner application, there are different alternatives:

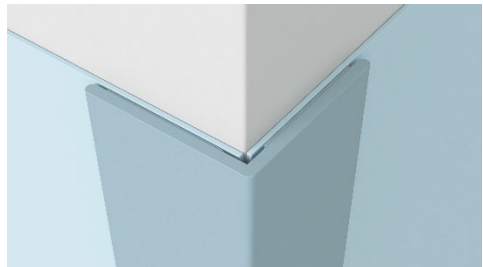
1. Trim the backing of the Protectwall along the wall height on the corner line drawn on the backing (maximum 0,4mm). Then press the folded sheet into the corner.
2. The sheet could also be pre-folded before application into adhesive by using hot air blower and pressing tool. Then press the folded sheet into the corner.

- In case you prefer not to pass the corner but cut the wallcovering at the angle, special profiles (set-in or set-on corners) can be placed on the outside corner

Prior to the Protectwall installation for set-in corners:

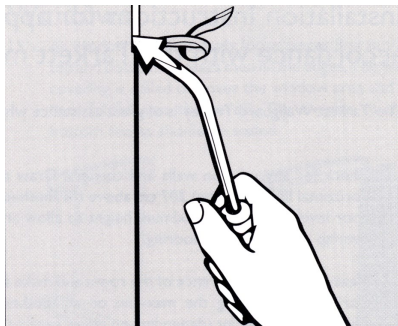


After the Protectwall installation for set-on corners:

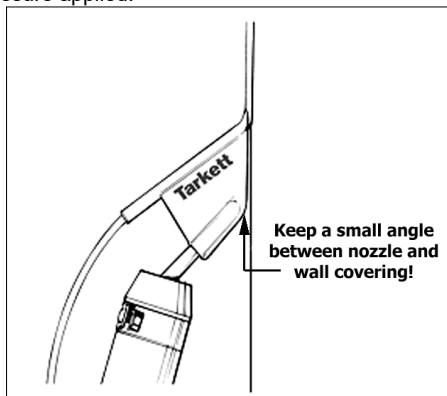


GROOVING AND HOT WELDING

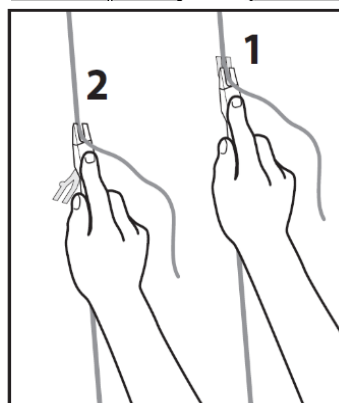
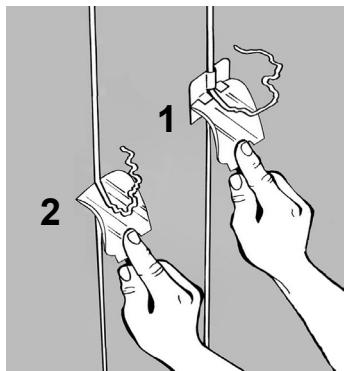
- All seams are grooved using a hand groover. Groove until 2/3 of the thickness.



- Do not perform welding until the adhesive is completely dry. (Wait 24-48 hours)
- We recommend the use of a Tarkett Triangular Speed nozzle to prevent any damage of the wallcovering.
- Perform welding test on waste material to define the perfect set-up between temperature, speed and pressure applied.



- Remember to maintain a constant angle between the welding nozzle and the wall to preheat the joint properly.
- After welding, trim the rod in 2 times :
 1- Directly after welding with a quarter-moon knife (or a Mozart knife) + the trimming guide of 0,5mm.
 2- After the welding rod has cooled and without the trimming guide.



INSPECTION

- The work must be completed with an inspection. Ensure that the newly laid flooring is free from adhesive residues and that the bond is consistent with no bubbles.

FOR THE BEST RESULTS

- Use only adhesives recommended by adhesive manufacturer.
- Use a matting system at entrances to protect from dirt and dust. Rubber can cause discoloration to the floor.

GENERAL

- Contact you Tarkett representative if unsure about any part of the installation.
- This information is subject to change continuous improvement