

QuadroClad[®] Façades

HunterDouglas[®] QuadroClad[®] Façade System is a unique, open-jointed cladding system based on the principles of rainscreen façade technology.



Technical brochure

HunterDouglas 
Architectural

QuadroClad® Façades

Outstanding looks, excellent functionality



Project : Jaguar / Landrover, Lille, France
Product : QuadroClad® QC300
Architect: SRA Architects



QC50

Two folded aluminium layers with honeycomb core inside



QC100

Roll formed edges for easy installation



QC200

Fully engineered extruded top profile



QC300

Specially designed aluminium extruded profile

THE PERFECT COMBINATION

HunterDouglas® Façade Systems have been specifically engineered to meet almost any design criteria. The system combines a unique design with a durable and robust structure that can withstand even the severest of environments. Achieved by using technology originally developed for the aircraft industry, our façade systems combine a smooth, flat and stylish appearance with superior performance.

FORM AND FUNCTION

Choosing the right façade system can be challenging. When you specify the HunterDouglas® QuadroClad® Façade System you will find a product range that effortlessly blends form and function, whilst enhancing both the building's comfort and performance levels. The QuadroClad® Façade System can be applied to almost any new or existing substructure.



QuadroClad® technical features

- Large façade panels (1500 x 6000 mm as standard)
- Extreme panel flatness combined with sharp and clean edges
- Excellent wind-load performance
- No thermal-bow in panels due to aluminium honeycomb construction, which ensures extreme flat panels
- Low weight per m² (approximately 6.5 kg/m²)
- Quick installation methods with minimum fixings to substructure
- Suitable for any building size
- Endless possibilities for combining materials, colours and finishes
- Made to measure product
- Superior quality and durability
- Almost any panel shape possible: trapezoidal, curved, cranked etc.

CREATIVE FREEDOM

HunterDouglas® QuadroClad® Façade System includes a wide range of panel shapes and sizes. These can be curved or cranked using our standard joint and carrier system. An unlimited range of colours, materials and surfaces provide the design team with unparalleled creative freedom.

COMMITTED TO QUALITY

A relentless commitment to quality, as well as more than 50 years of worldwide experience in the development and manufacturing of aluminium façades, has created a high level of quality that characterises all HunterDouglas® architectural products.

INTERIOR

QuadroClad® panels allow the architect and designer to seamlessly continue the exterior façade into the interior design. This unique feature gives the perception of a spatial effect. Please refer to page 12 for our QuadroClad® interior system.

CONTENT

| | Page |
|---------------------------------------|------|
| Honeycomb composite technology | 2 |
| Product information and specification | 4 |
| QuadroClad® QC50 Exterior | 6 |
| QuadroClad® QC50 Interior | 12 |
| QuadroClad® QC100 Vertical | 18 |
| QuadroClad® QC200 Horizontal | 24 |
| QuadroClad® QC200 Vertical | 30 |
| QuadroClad® QC300 Horizontal | 36 |
| QuadroClad® QC300 Vertical | 42 |
| Architectural service | 48 |

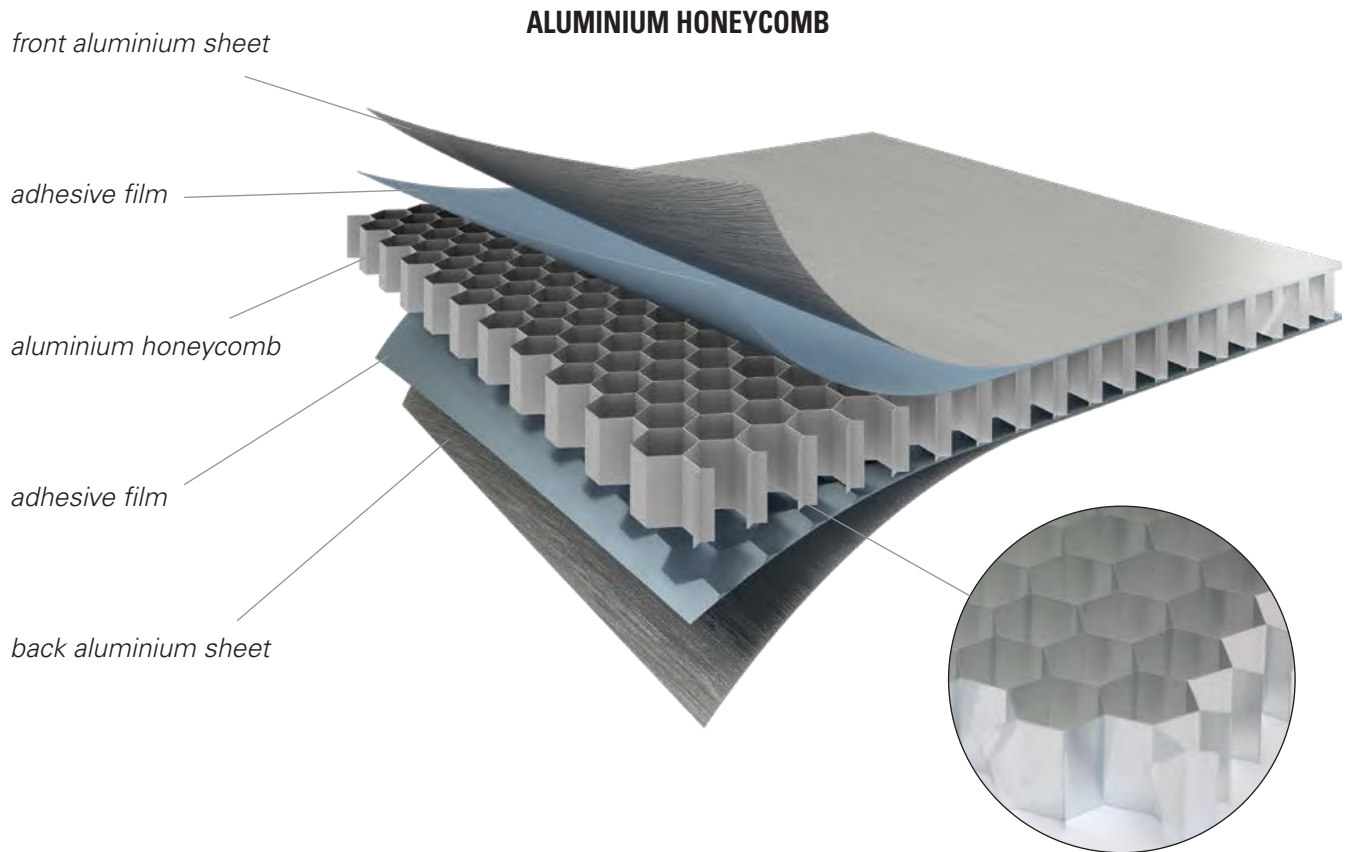
HunterDouglas 
Architectural



Designed to work for you

Honeycomb composite technology

Incorporated within our honeycomb composite technology are two metal skins that sandwich a unique aluminium honeycomb structure, specifically designed to withstand high pressure and shear force. The skin and the honeycomb are joined together using high quality adhesives to create an extremely strong and solid mechanical construction.



Below : Fire Department, Bornem, Belgium
Architect: Studio Klein Brabant
Product : QuadroClad® QC200



COIL-COAT TECHNOLOGY

Hunter Douglas Architectural coil-coats flat metal strips in a continuous process before the metal is given its final shape.

- Coil-coated materials comply with the highest European quality standards (EN 1396)
- Coil-coating takes place under optimum factory-controlled conditions
- High grade pre-treatment (adhesion & protection)
- Optimum control over coating thickness
- High level of colour continuity

100% RECYCLABLE

All components of QuadroClad® are made from aluminium.

Aluminium alloy is fully recyclable at the end of the façade lifecycle.



Project : U-Bahnhof Kienberg, Berlin, Germany
Architect: HEWA Baukonzeptgesellschaft mbH
Product : QuadroClad® QC300

Product information and specification

| Dimensional specifications | QC50 | QC100 | QC200 | QC300 | Unit |
|----------------------------------|---------------------|---------------------|---------------------|---------------------|-------------------|
| Panel thickness | 10 - 25 | 25 - 35 | 25 | 25 | mm |
| Panel weight | 5.32 ⁽¹⁾ | 5.77 ⁽¹⁾ | 6,7 | 7,5 | kg/m ² |
| Joint width | ∞ | 25 | 10 - 12.5 - 15 mm | 10 | mm |
| Maximum length | 6000 ⁽²⁾ | 6000 ⁽²⁾ | 6000 ⁽²⁾ | 6000 ⁽²⁾ | mm |
| Maximum width | 1550 | 1550 | 1550 | 1550 | mm |
| Thickness - aluminium top sheet | 1 ⁽²⁾ | | | | mm |
| Thickness - aluminium back sheet | 0.5 ⁽²⁾ | | | | mm |

⁽¹⁾ 25 mm

⁽²⁾ as standard

| Finishes and Surfaces | | Systems | Max. width | Max. length |
|-----------------------|---------------------|---------|------------|---------------------|
| Aluminium Colourcoat | Solid Colours | All | 1550 | 6000 ⁽¹⁾ |
| | Sparkling Mica | All | 1550 | 6000 ⁽¹⁾ |
| | Natural Aluminium | All | 1550 | 6000 ⁽¹⁾ |
| | Amazing Metallic | All | 1550 | 6000 ⁽¹⁾ |
| | Design and Specials | All | 1550 | 6000 ⁽¹⁾ |

⁽¹⁾ Longer panels on request

| Materials | | Systems | Max. width | Max. length |
|---------------------------|---------------------------------|---------|------------|---------------------|
| Zinc | Quartz zinc | All | 1200 | 4000 ⁽¹⁾ |
| | Azengar Tache | All | 950 | 4000 ⁽¹⁾ |
| | Anthra zinc | All | 950 | 4000 ⁽¹⁾ |
| | Pigmento (blue/red/green/brown) | All | 1200 | 4000 ⁽¹⁾ |
| | Zinc on demand | All | 1200 | 4000 ⁽¹⁾ |
| Copper | Nordic Standard | QC50 | 1050 | 4000 ⁽¹⁾ |
| | Nordic Brown & Brown Light | QC50 | 950 | 4000 ⁽¹⁾ |
| | Nordic Green & Blue | QC50 | 950 | 4000 ⁽¹⁾ |
| | Nordic Royal | QC50 | 950 | 4000 ⁽¹⁾ |
| Brass | Nordic Brass & Weathered | QC50 | 950 | 4000 ⁽¹⁾ |
| | Nordic Brass 30 | QC50 | 950 | 4000 ⁽¹⁾ |
| Bronze | Nordic Bronze | QC50 | 730 | 4000 ⁽¹⁾ |
| Stainless steel | Patterns | QC50 | 1200 | 4000 ⁽¹⁾ |
| | Granex | QC50 | 1450 | 4000 ⁽¹⁾ |
| | ColourTex | QC50 | 1200 | 4000 ⁽¹⁾ |
| | ColourTex (electropolished) | QC50 | 1200 | 4000 ⁽¹⁾ |
| | OneTex | QC50 | 1200 | 4000 ⁽¹⁾ |
| | MetalArt | QC50 | 1200 | 4000 ⁽¹⁾ |
| | Vortex | QC50 | 1450 | 4000 ⁽¹⁾ |
| | SuperMirror | QC50 | 1450 | 4000 ⁽¹⁾ |
| Anodised Aluminium | Standard mill finish | All | 1500 | 6000 ⁽¹⁾ |
| | Brite | All | 1500 | 6000 ⁽¹⁾ |
| | Brushed | All | 1500 | 6000 ⁽¹⁾ |

⁽¹⁾ Longer panels on request

| Interior only | Systems | Max. width | Max. length |
|--|---------|------------|---------------------|
| Blackened Steel | QC50 | 1200 | 2450 |
| Stainless Steel (T22) | QC50 | 1450 | 3950 |
| Ultra matte - high reflective white | All | 1550 | 6000 ⁽¹⁾ |

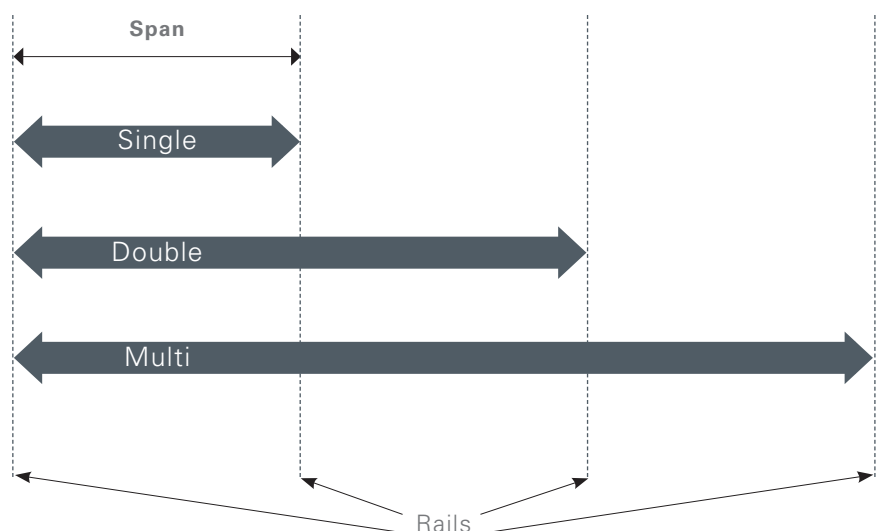
⁽¹⁾ Longer panels on request

| Colourcoat specifications <i>(Based on aluminium)</i> | Systems | Unit |
|---|--|------------------------------------|
| Coating | PVDF / FEVE / PUR-PA / HDP / PE | |
| Gloss units | 10 - 90 % | |
| Solid Colours | NCS / RAL / BS / Custom | |
| Effects | Sparkling Mica / Amazing Metallic / Design and specials / Custom | |
| Thickness | EN 13523-1, ISO 2360 | 24-32 micron |
| Gloss level | EN 13523-2, ISO 2813 | 28 +/- 3 units |
| Gloss difference within batch | EN 13523-2, ISO 2813 | +/- 3 units |
| Colour difference from standard | EN 13523-3, ISO 7724, part 3 | DE<2 units |
| Colour difference within batch | EN 13523-3, ISO 7724, part 3 | DE<0,7 |
| Flexibility | EN 13523-7, ISO 1519 | Depending on alloy/shape |
| Adhesion | EN 13523-5, ISO 6272 | |
| | EN 13523-7, ISO 1519 | For impact/bending over 2T |
| | ISO 2409 | No loss of adhesion |
| Pencil hardness | EN 13523-4, ASTM D 3363 | >= H |
| Weather fastness | EN 1396, EN 13523-19 | Can be used for all categories |
| Corrosion resistance | EN 1396, EN 13523-19 | Highest class |
| Humidity resistance | EN 13523-9, ISO 6270, ISO 4628/2 | Less blister than size 2 |
| Salt/acid corrosion test | EN 13523-9, ISO 4628/2 | 1,000 hours less than 2 mm creep |
| Saltspray | ISO 7253 | Too mild for aluminium (No result) |

| Fire Performance ⁽¹⁾ | Result |
|---------------------------------|-----------------|
| EN13501-1 | A2 – s1, d0 |
| NFPA 285 | Pass |
| ASTM E84 | FSI: 0 / SDI: 0 |
| CAN UL S134 | Pass |

⁽¹⁾ Please contact our Project Support for latest certifications.

| Span table for QC300 Horizontal <i>(other systems on request)</i> | | | |
|---|--|-------------|------------|
| Windload N/m ² <i>(working load)</i> | Span for module 1500 mm (horizontal distance between the vertical rails) | | |
| | Single (mm) | Double (mm) | Multi (mm) |
| < 1000 | 1900 | 2050 | 2050 |
| 1000 - 1500 | 1750 | 1350 | 1350 |
| 1501 - 2000 | 1650 | 1000 | 1000 |

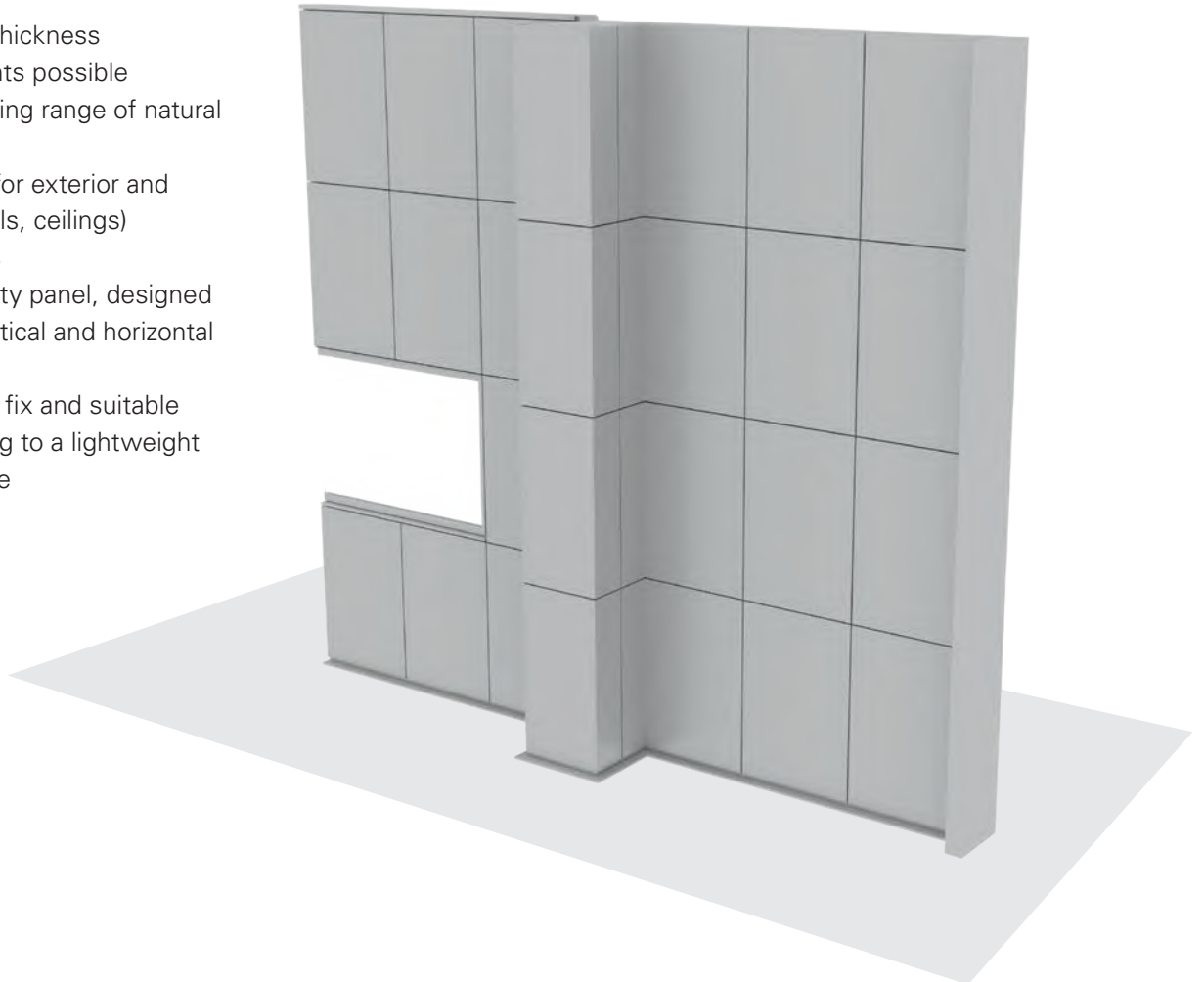


QuadroClad® QC50 Exterior

QuadroClad® QC50, our BASIC panel, is a high quality panel that can be fitted to almost any fascia of a building. QC50 is available in a range of natural materials, is lightweight and easy to install.

FEATURES

- Variable in thickness
- Variable joints possible
- Fits a stunning range of natural materials
- Applicable for exterior and interior (walls, ceilings) applications
- A high quality panel, designed for both vertical and horizontal application
- It is easy to fix and suitable for mounting to a lightweight substructure



| SPECIFICATION | |
|--------------------------------|------------------------|
| Maximum panel width | 1550 mm |
| Maximum panel length | 6000 mm ⁽¹⁾ |
| Panel thickness | 15 - 25 - 35 mm |
| Joint width | ∞ |
| Cavity | Min. 10 mm |
| Available finishes & materials | See page 4 |

⁽¹⁾ Larger panels on request

Project : Crossroad Office Building, San Diego, USA
 Architect : Open Studio Architects
 Product : QuadroClad® QC50



HUNTERDOUGLAS® QC50 PANEL PARTS



QC50 Panel
C403000000

ASSEMBLED ELEMENTS



QC50 Panel

SUBSTRUCTURE EXAMPLE (Non-HD)



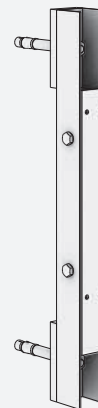
U profile



T profile hooksystem



Vertical limiter

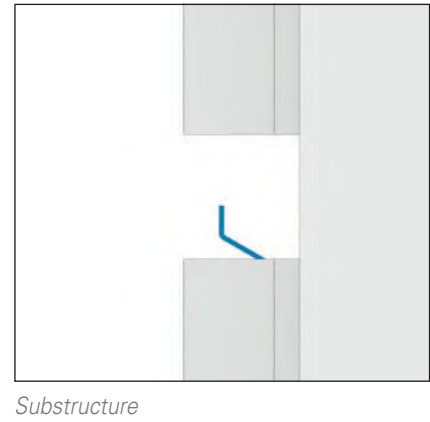
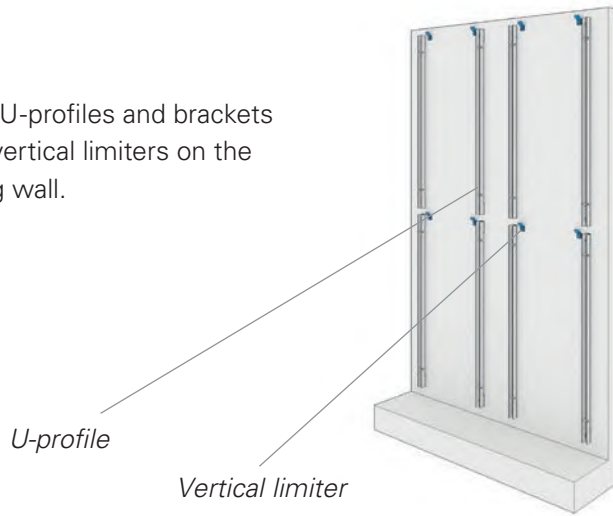


U+T

INSTALLATION*

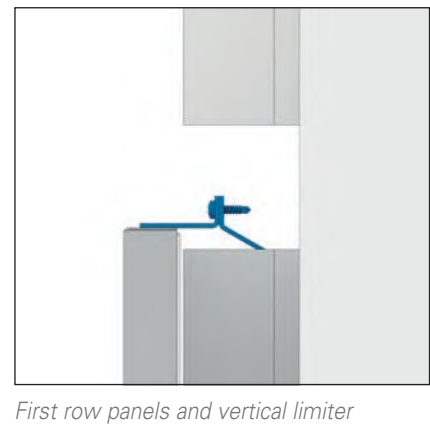
STEP 1

Mount U-profiles and brackets of the vertical limiters on the existing wall.



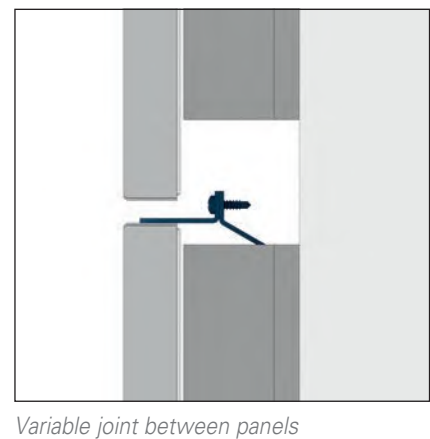
STEP 2

Slide the first panels into position. Screw fix the brackets onto the limiters.



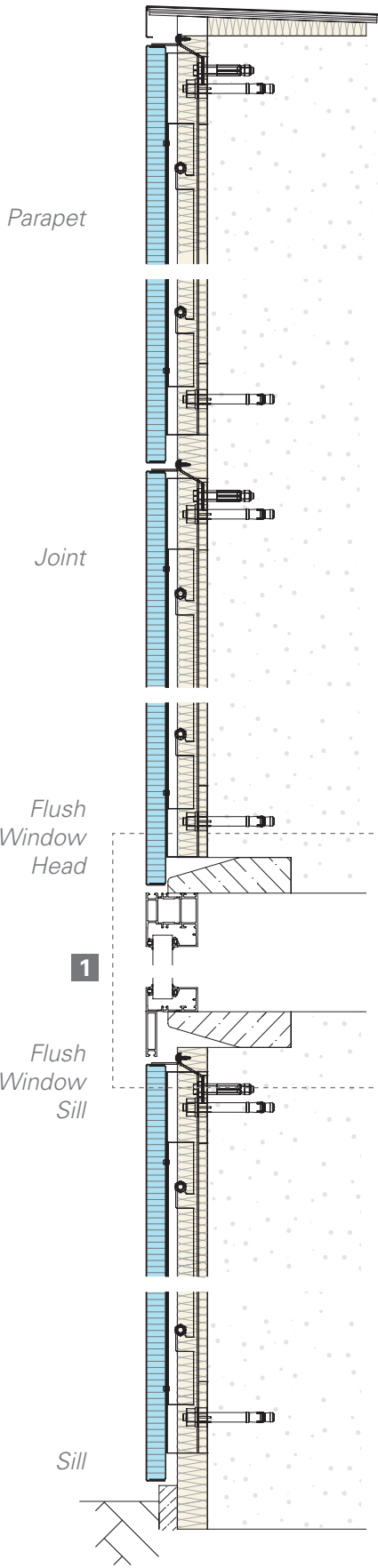
STEP 3

Repeat the process by sliding the panels into place.

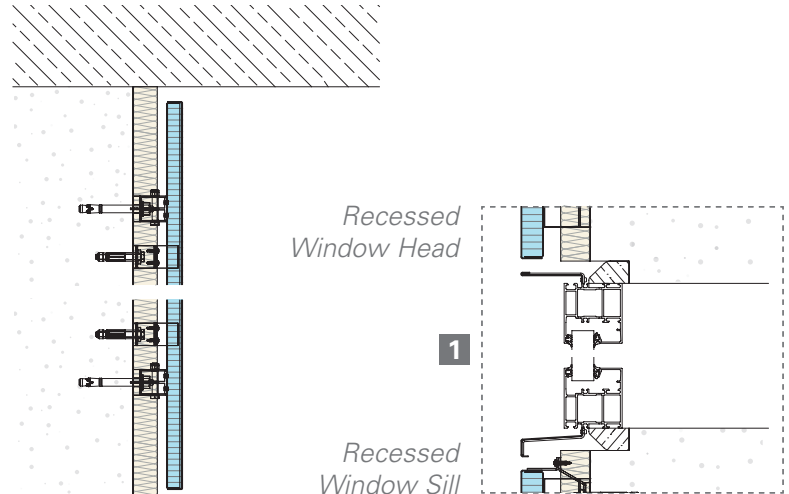


* For detailed technical information please download our installation manual from the website.

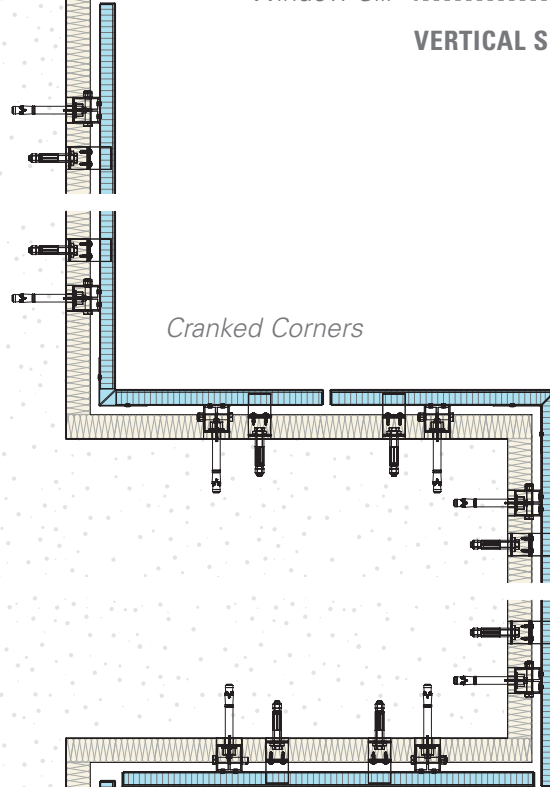
QC50 SYSTEM DETAILS



VERTICAL SECTION



VERTICAL SECTION



2

Flush Window

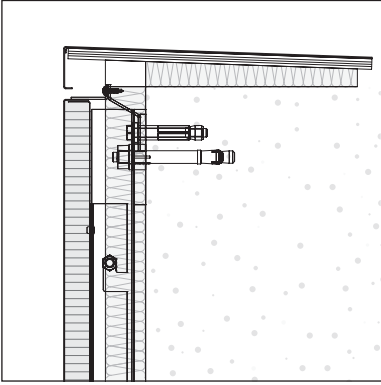
HORIZONTAL SECTION

2

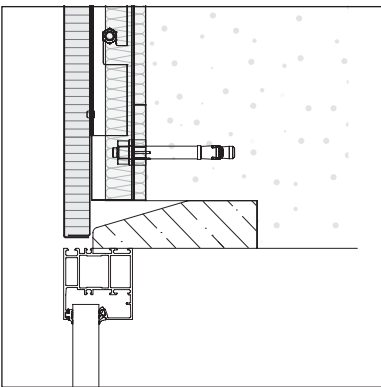
Recessed Window

HORIZONTAL SECTION

DETAILS

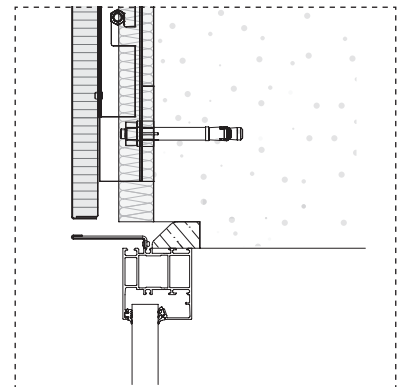


Parapet

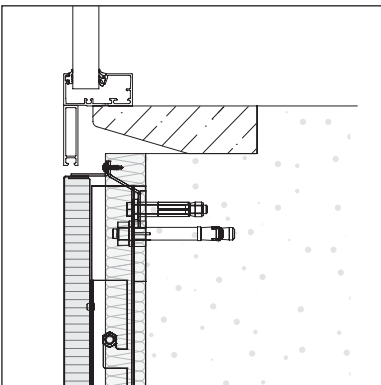


Flush Window Head

Flush or Recessed Window Head

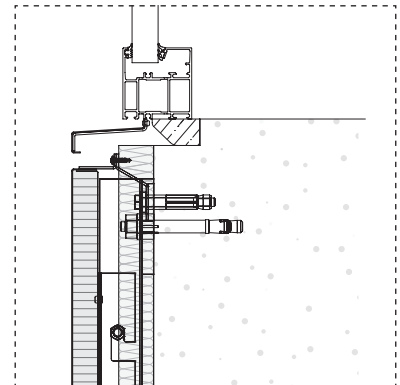


Recessed Window Head

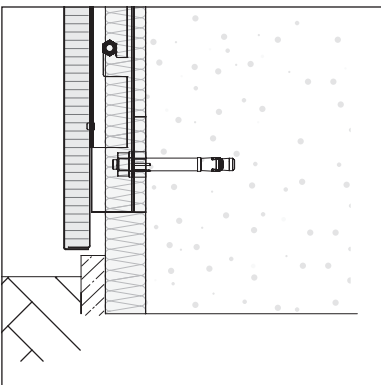


Flush Window Sill

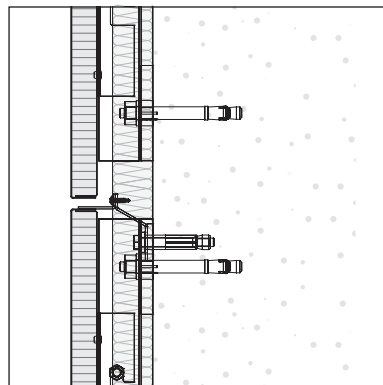
Flush or Recessed Window Sill



Recessed Window Sill

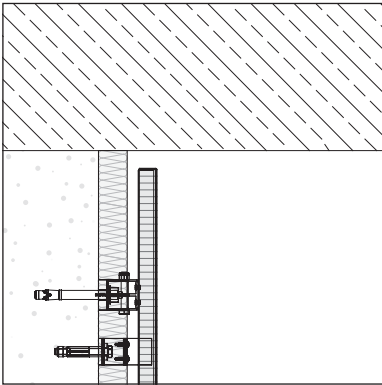


Sill

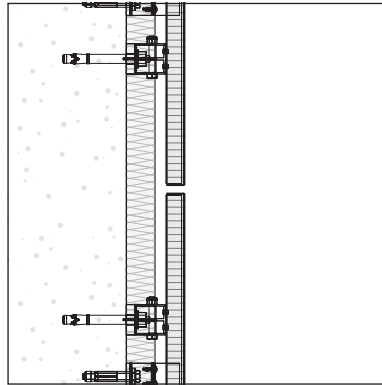


Horizontal Joint

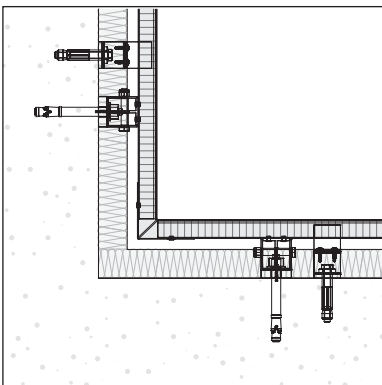
VERTICAL SECTION



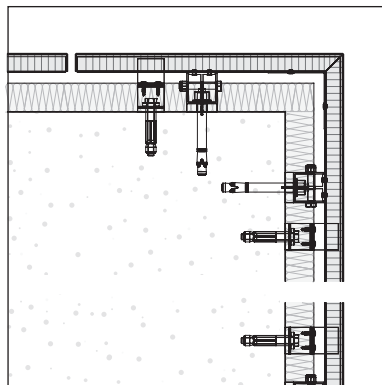
Wall Jamb



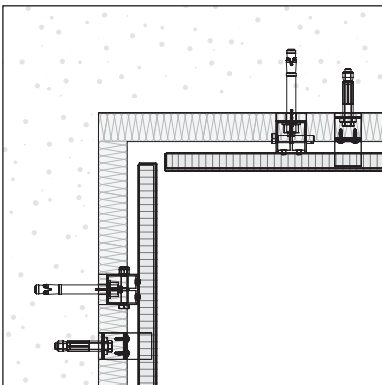
Vertical Joint



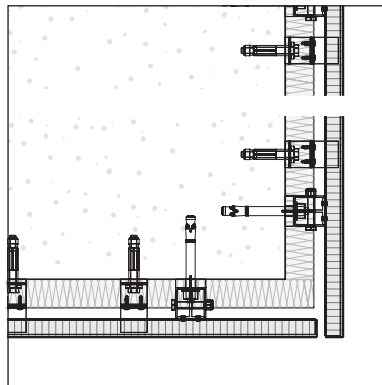
Cranked Corner Inside



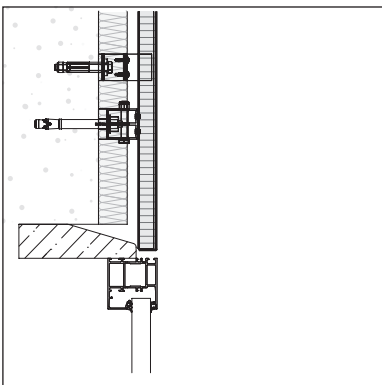
Cranked Corner Outside



Open Corner Inside

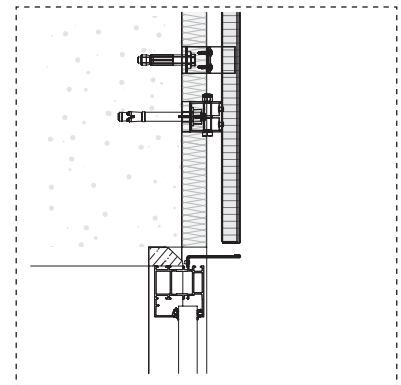


Open Corner Outside



Flush Window

Flush or Recessed Window



Recessed Window

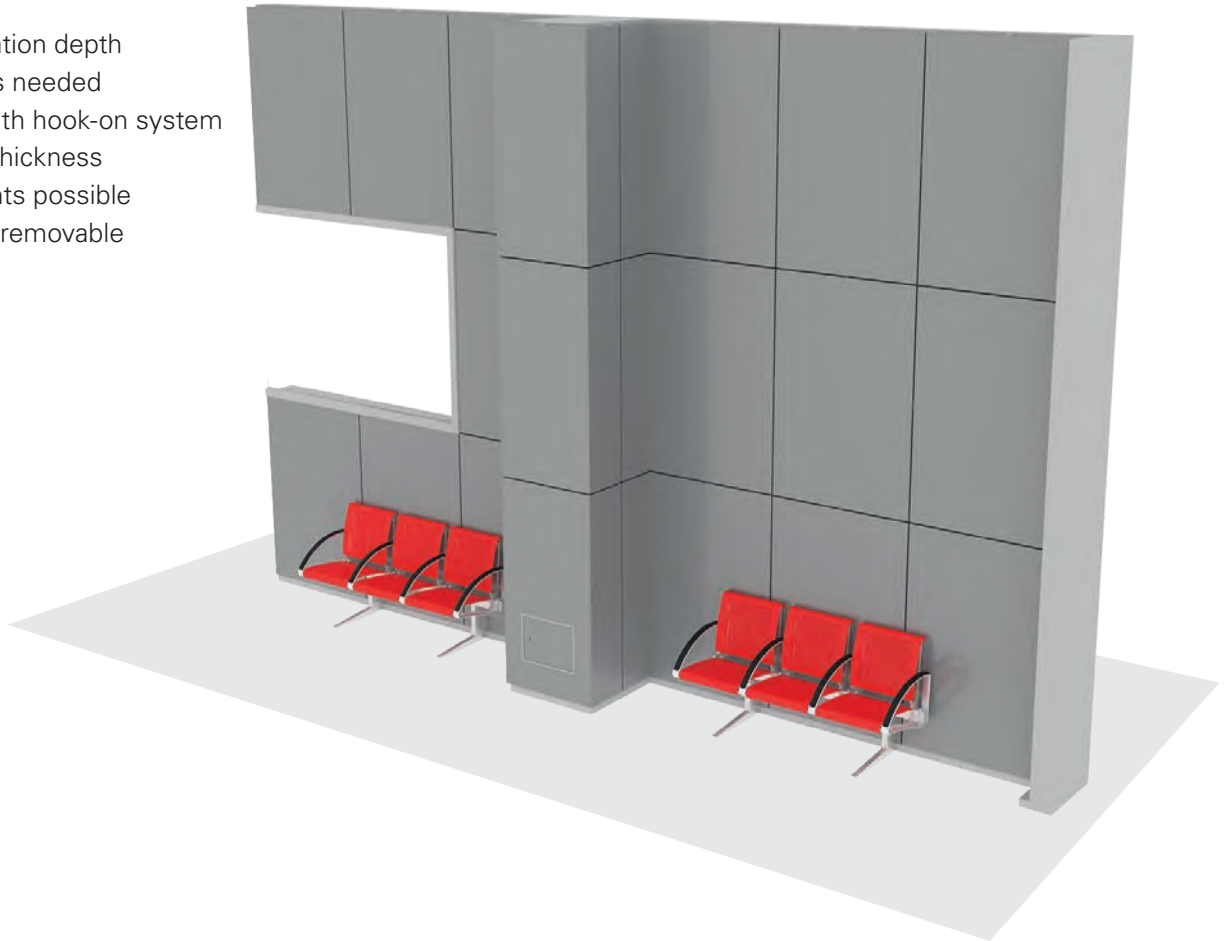
HORIZONTAL SECTION

QuadroClad® QC50 Interior

Besides exterior cladding, QuadroClad® QC50 is the perfect system for interior solutions. The hook-on profile guarantees easy and quick installation.

FEATURES

- Low installation depth
- Fewer parts needed
- Provided with hook-on system
- Variable in thickness
- Variable joints possible
- Individually removable



SPECIFICATION

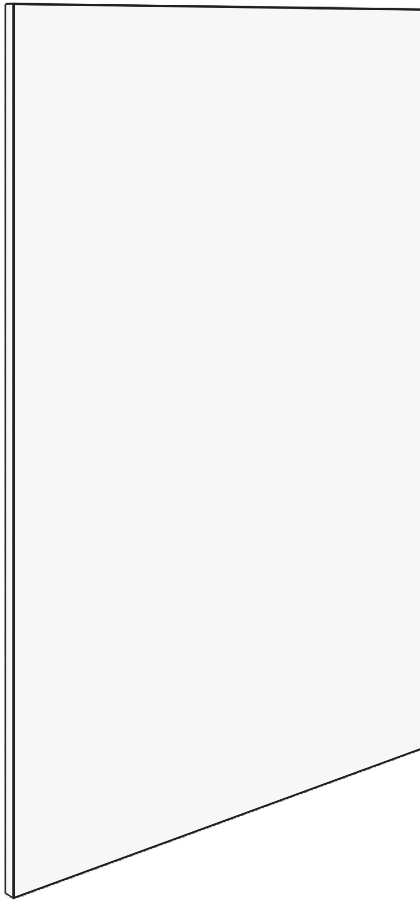
| | |
|--------------------------------|------------------------|
| Maximum panel width | 1550 mm |
| Maximum panel length | 6000 mm ⁽¹⁾ |
| Panel thickness | 10 - 25 mm |
| Joint width | ∞ |
| Available finishes & materials | See page 4 |

⁽¹⁾ Larger panels on request

Project : Lario Centre - Bennet, Tavernola, Italy
 Architect : Progetto CMR
 Product : QuadroClad® QC50 Interior



HUNTERDOUGLAS® QC50 PANEL PARTS



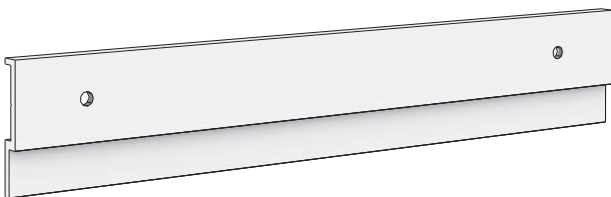
QC50 Panel
C403000000

ASSEMBLED ELEMENTS

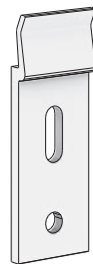


QC50 Panel

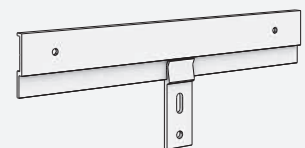
SUBSTRUCTURE EXAMPLE (Non-HD)



Suspension profile



Suspension clip

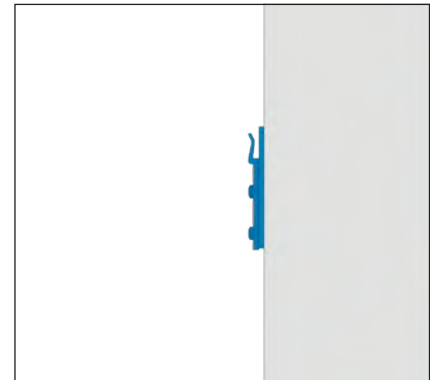


Substructure

INSTALLATION*

STEP 1

Mount suspension clips onto the existing wall.



Suspension clip

STEP 2

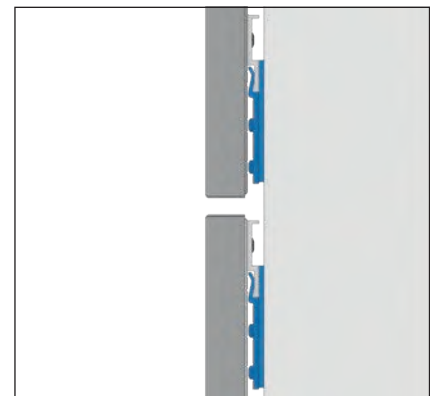
Hook on the first row of panels using the suspension profiles.



Hooked on panel

STEP 3

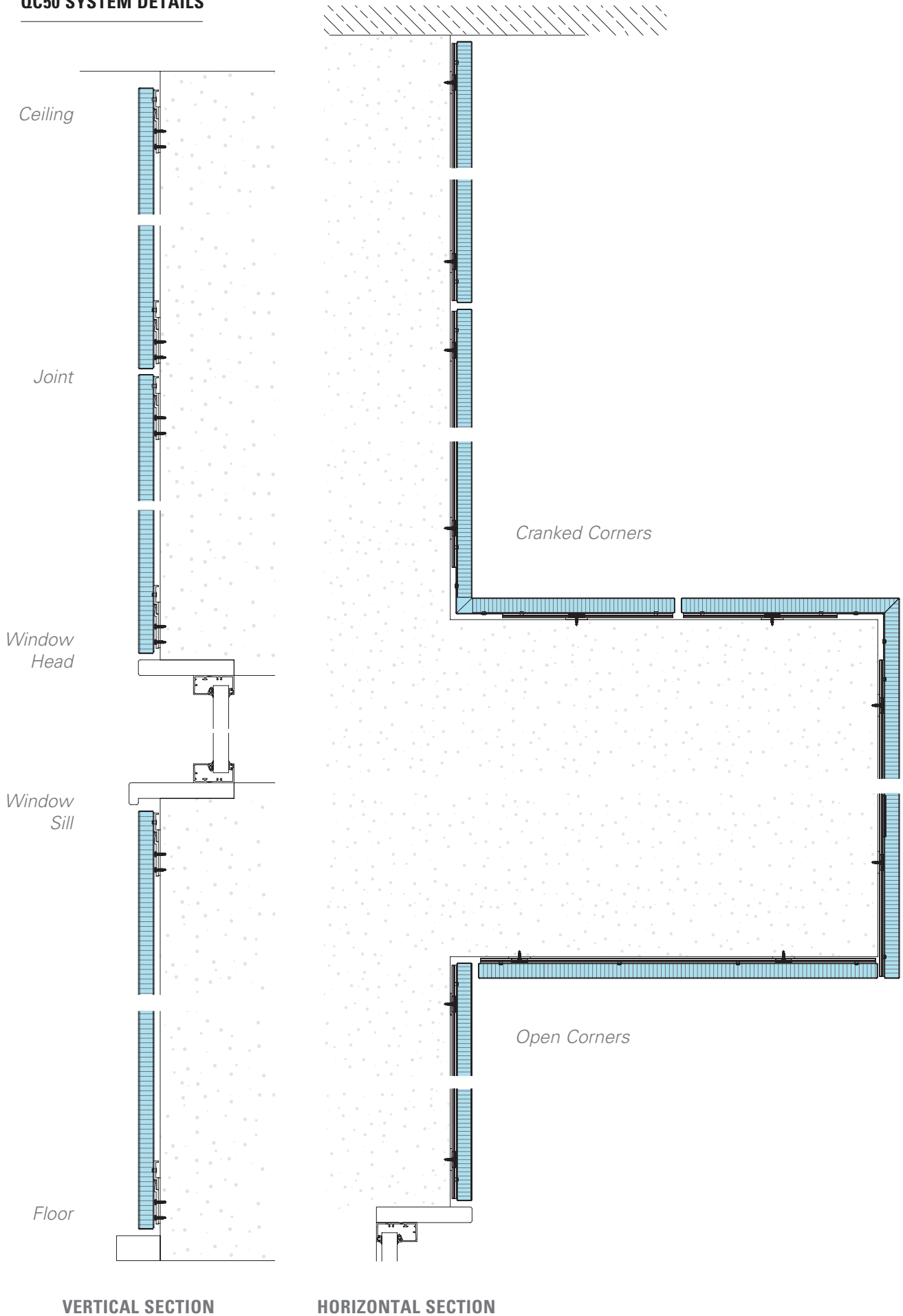
Repeat the process by hooking on the next panels.



Open joint

* For detailed technical information please download our installation manual from the website.

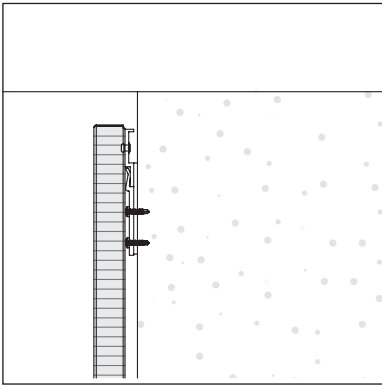
QC50 SYSTEM DETAILS



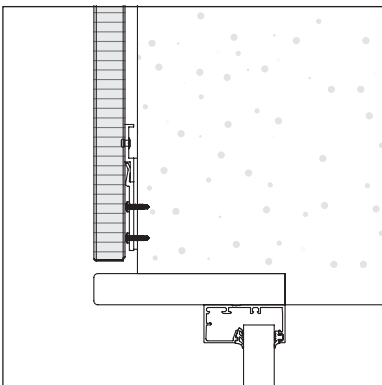
VERTICAL SECTION

HORIZONTAL SECTION

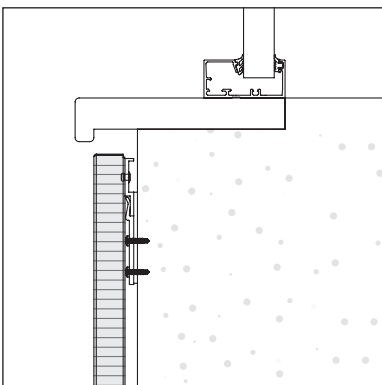
DETAILS



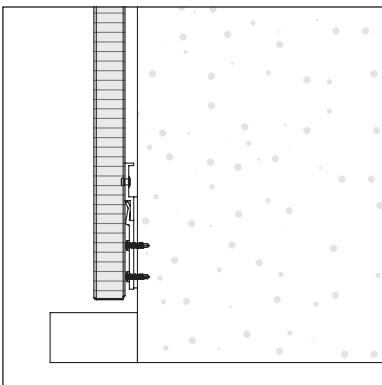
Parapet



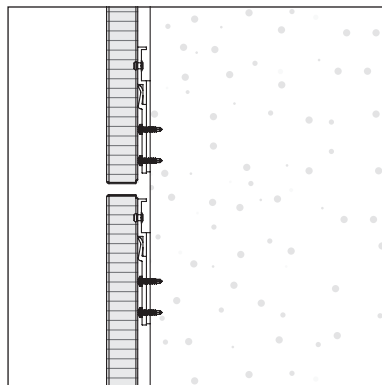
Window Head



Window Sill

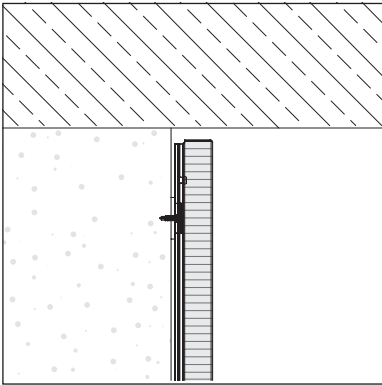


Sill

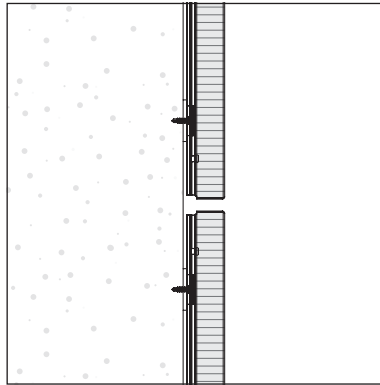


Horizontal Joint

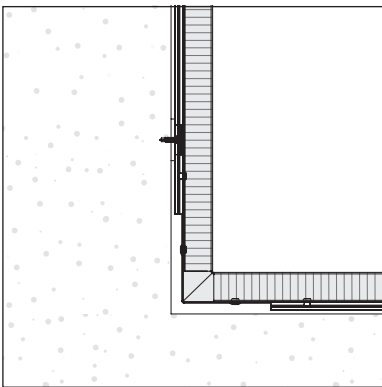
VERTICAL SECTION



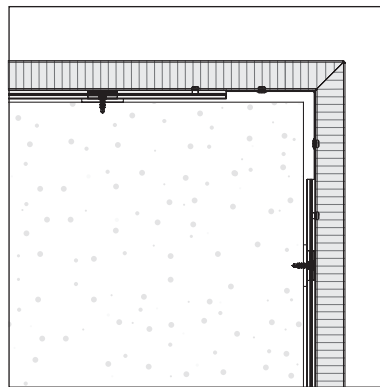
Wall Jamb



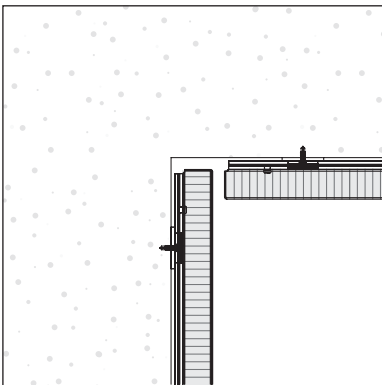
Vertical Joint



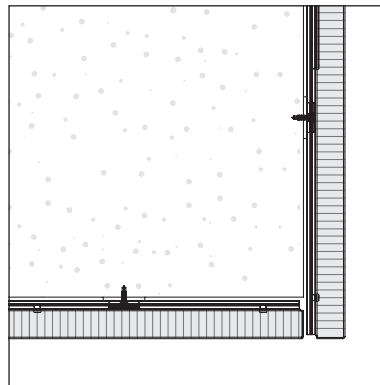
Cranked Corner Inside



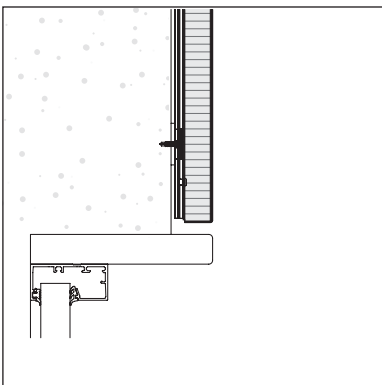
Cranked Corner Outside



Open Corner Inside



Open Corner Outside



Flush Window

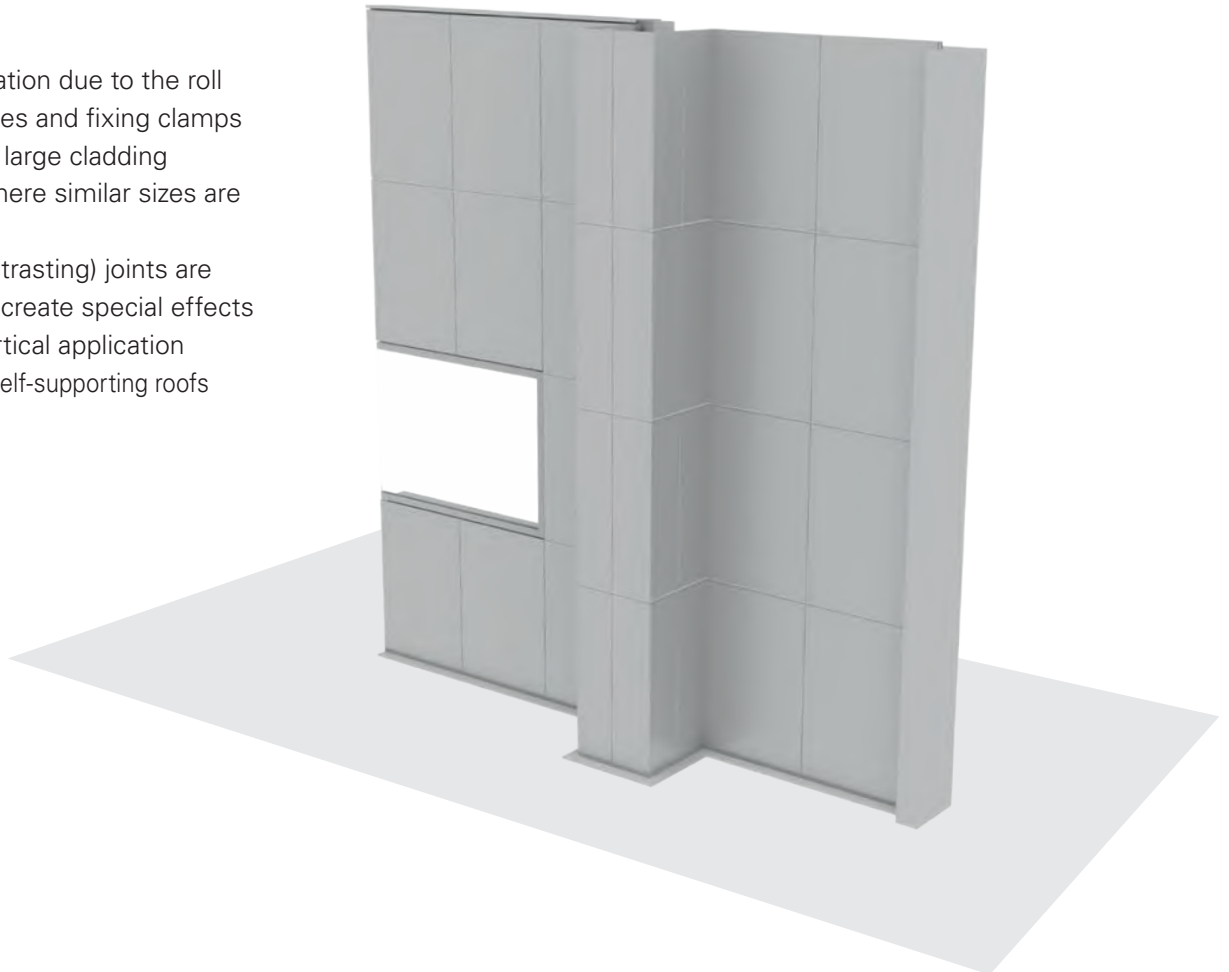
HORIZONTAL SECTION

QuadroClad® QC100

QuadroClad® QC100 is our EASY panel, its roll formed edge on two sides guarantees an easy installation when using the supplied fixing clamps. The clamp cover provides an optical 25 mm closed joint, which can be coloured to create an even more visual effect.

FEATURES

- Easy installation due to the roll formed edges and fixing clamps
- Suitable for large cladding projects (where similar sizes are desirable)
- Closed (contrasting) joints are available to create special effects
- Ideal for vertical application
- Suitable for self-supporting roofs

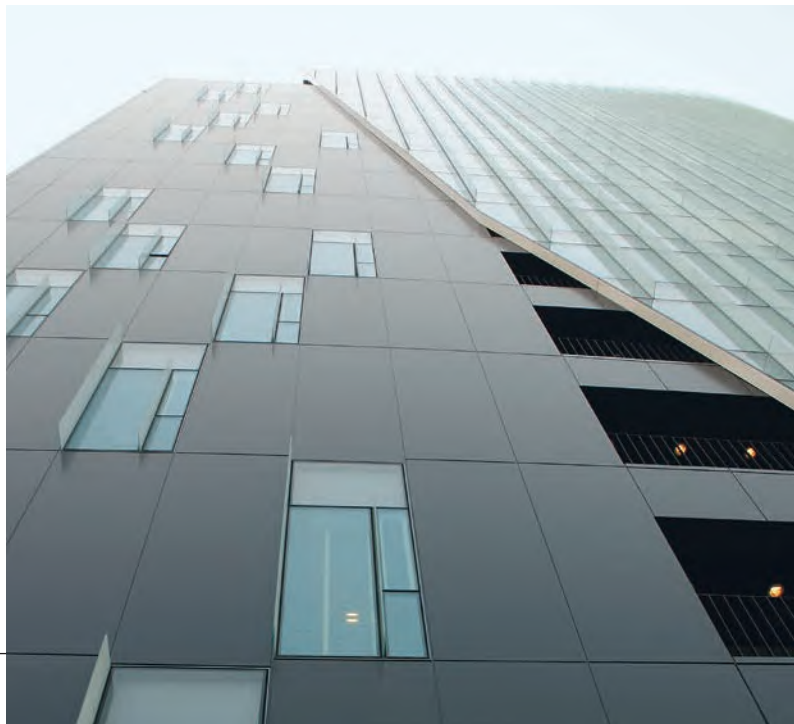


SPECIFICATION

| | |
|--------------------------------|------------------------|
| Maximum panel width | 1550 mm |
| Maximum panel length | 6000 mm ⁽¹⁾ |
| Panel thickness | 25 - 35 mm |
| Joint width | 25 mm |
| Cavity | Min. 10 mm |
| Available finishes & materials | See page 4 |

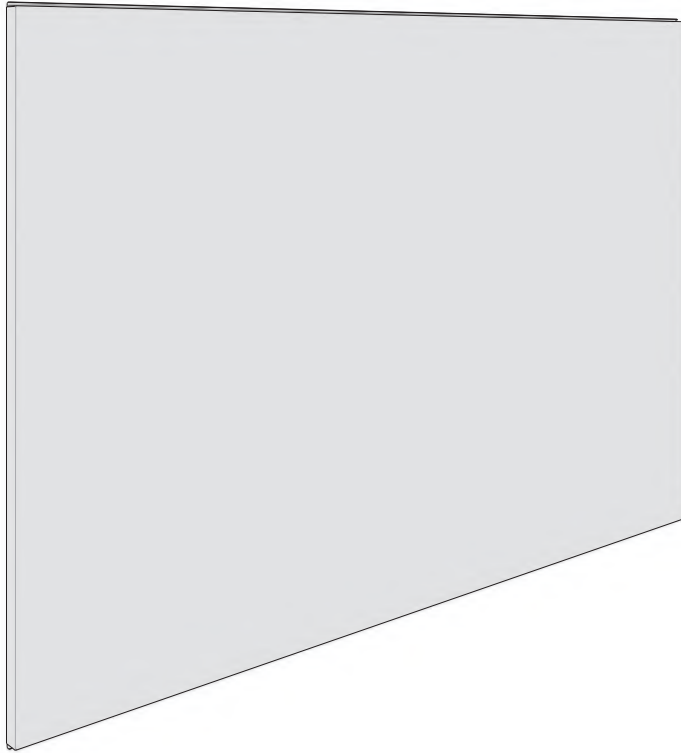
⁽¹⁾ Larger panels on request

Project : Piata Charles de Gaulle, Bucharest, Romania
 Architect : Westfourth Architecture
 Product : QuadroClad® QC100



HUNTERDOUGLAS® QC100 PANEL PARTS

ASSEMBLED ELEMENTS



QC100 Panel
C402000000

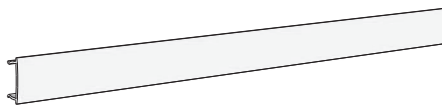


QC100 Panel

PROFILES

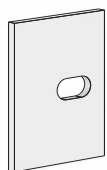


Clamp profile
C780620000

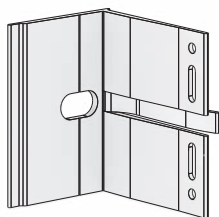


QC100 Cover profile
C780650000

SUBSTRUCTURE EXAMPLE (Non-HD)



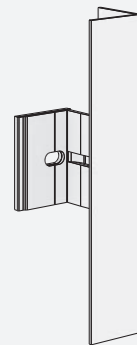
Insulation bracket



Wall bracket



L profile

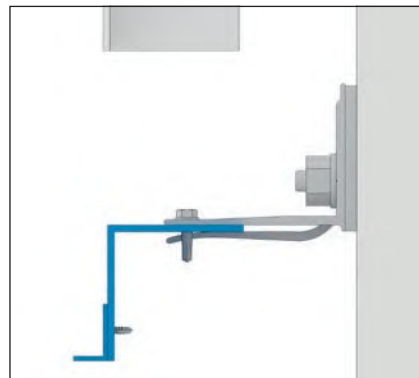
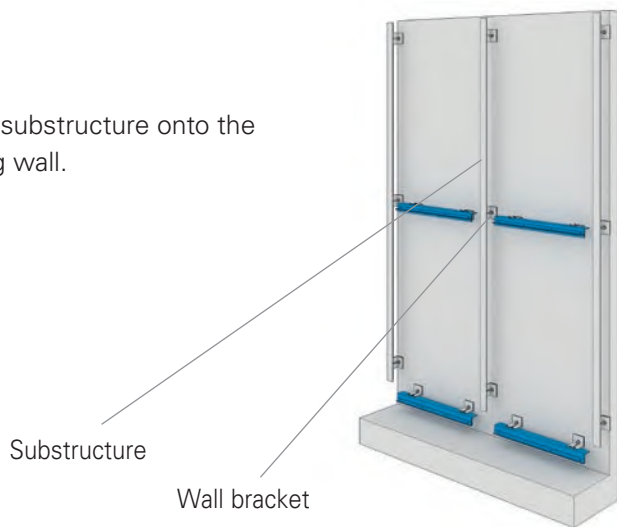


Substructure L Profile

INSTALLATION*

STEP 1

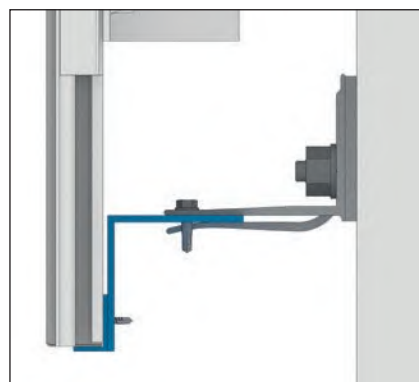
Mount substructure onto the existing wall.



Substructure and vertical limiter

STEP 2

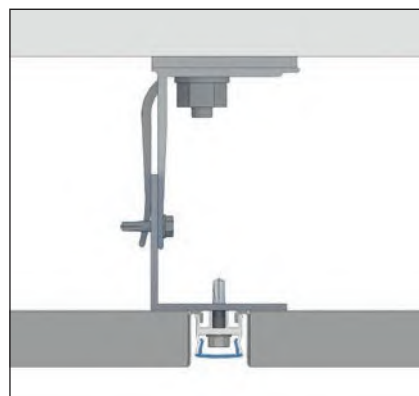
Fix the panels using the clamp profiles.



Bottom fixing

STEP 3

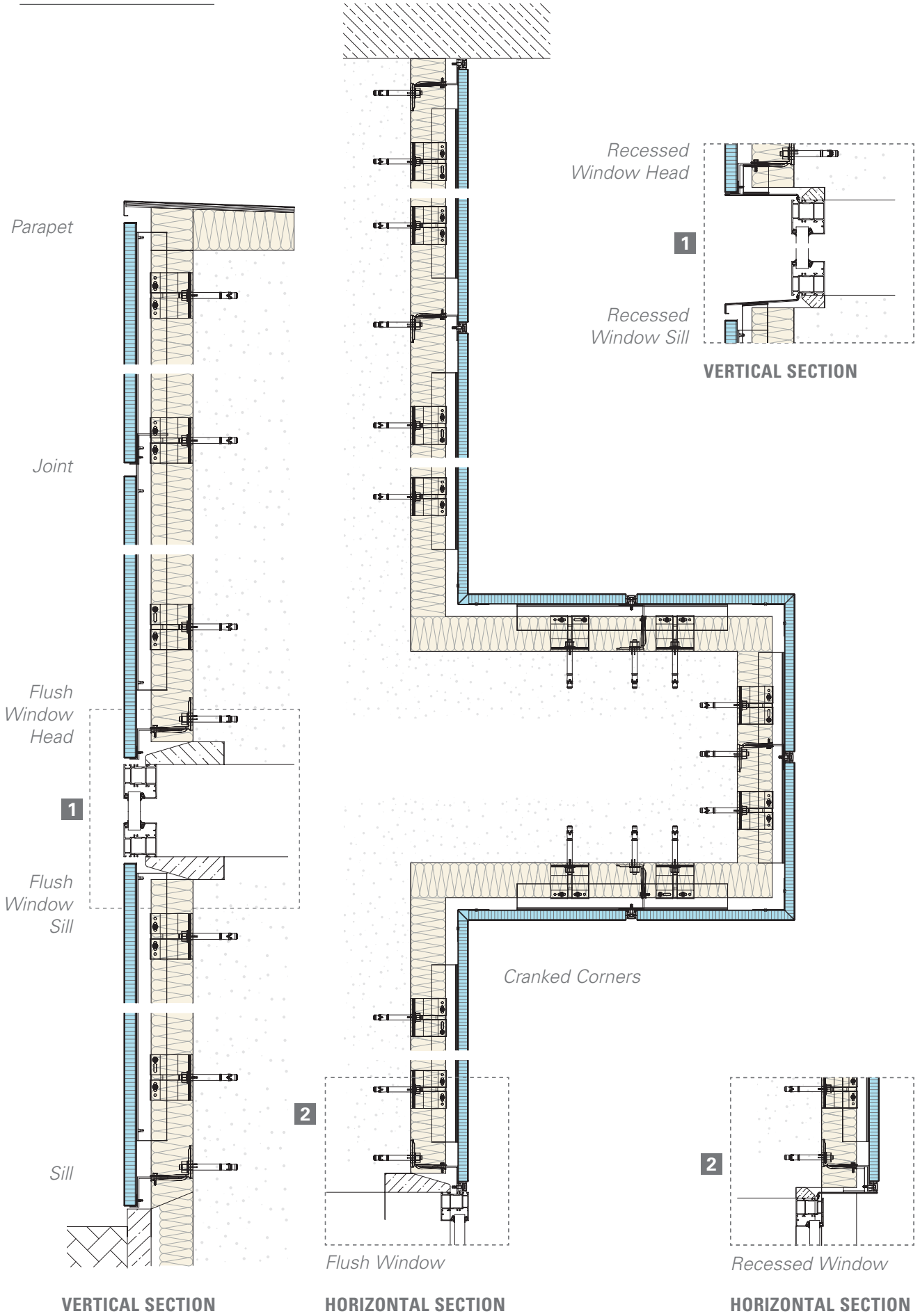
Click the cover profiles onto the clamp profiles.



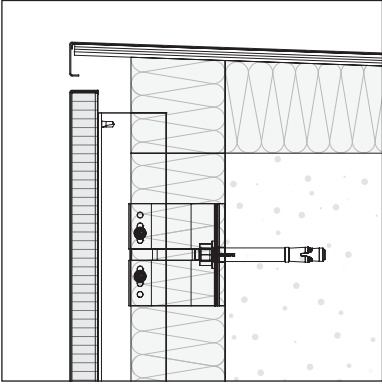
Centre fixing (top view)

* For detailed technical information please download our installation manual from the website.

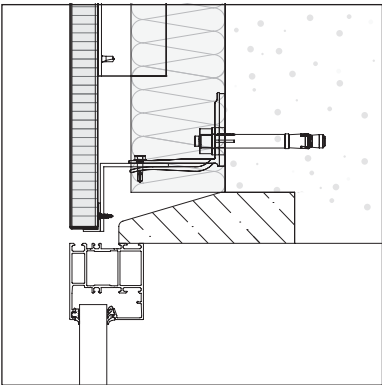
QC100 SYSTEM DETAILS



DETAILS

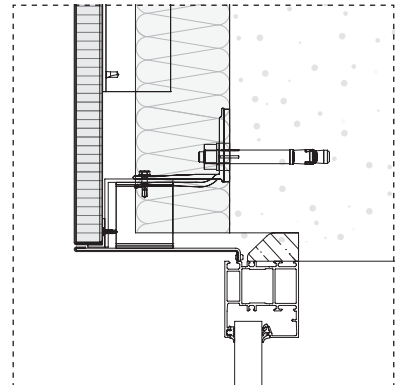


Parapet

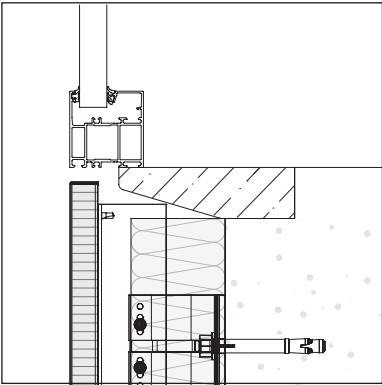


Flush Window Head

Flush or Recessed Window Head

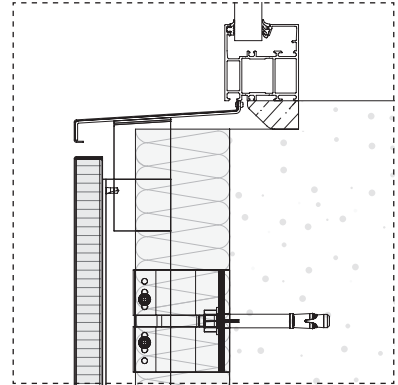


Recessed Window Head

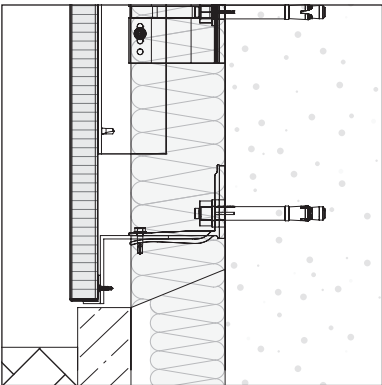


Flush Window Sill

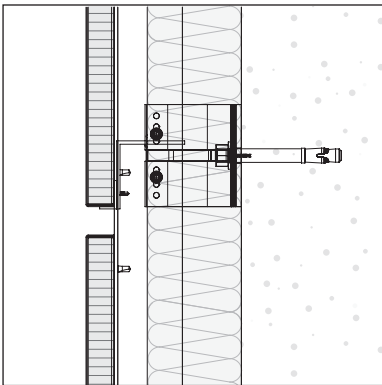
Flush or Recessed Window Sill



Recessed Window Sill

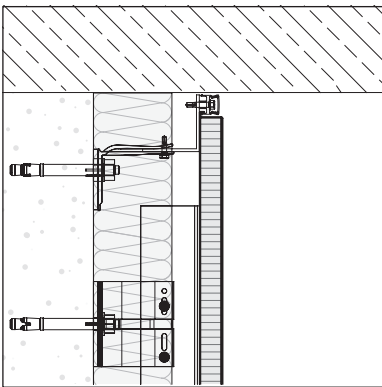


Sill

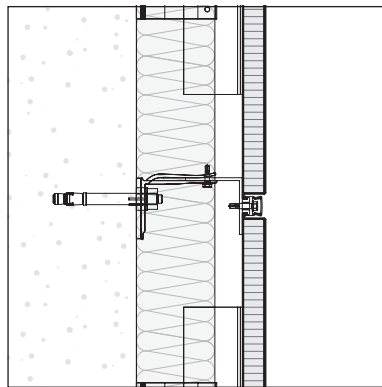


Horizontal Joint

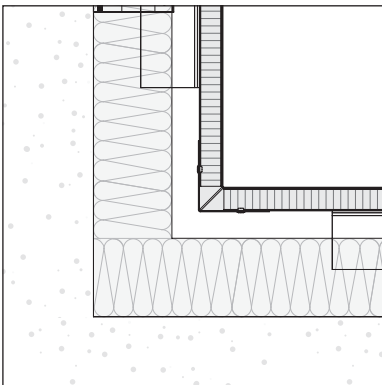
VERTICAL SECTION



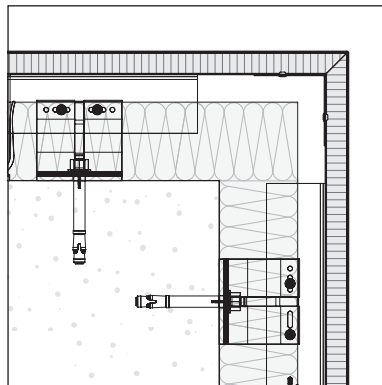
Wall Jamb



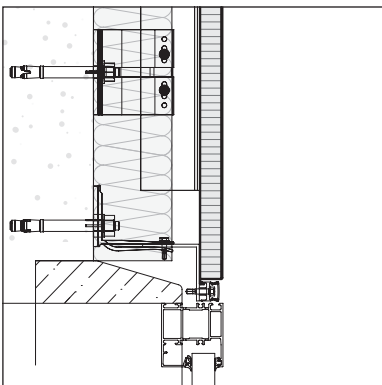
Vertical Joint



Cranked Corner Inside

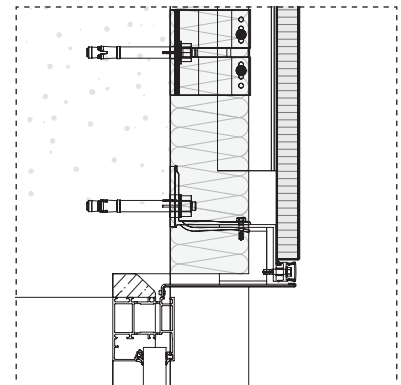


Cranked Corner Outside



Flush Window

Flush or Recessed Window
----->



Recessed Window

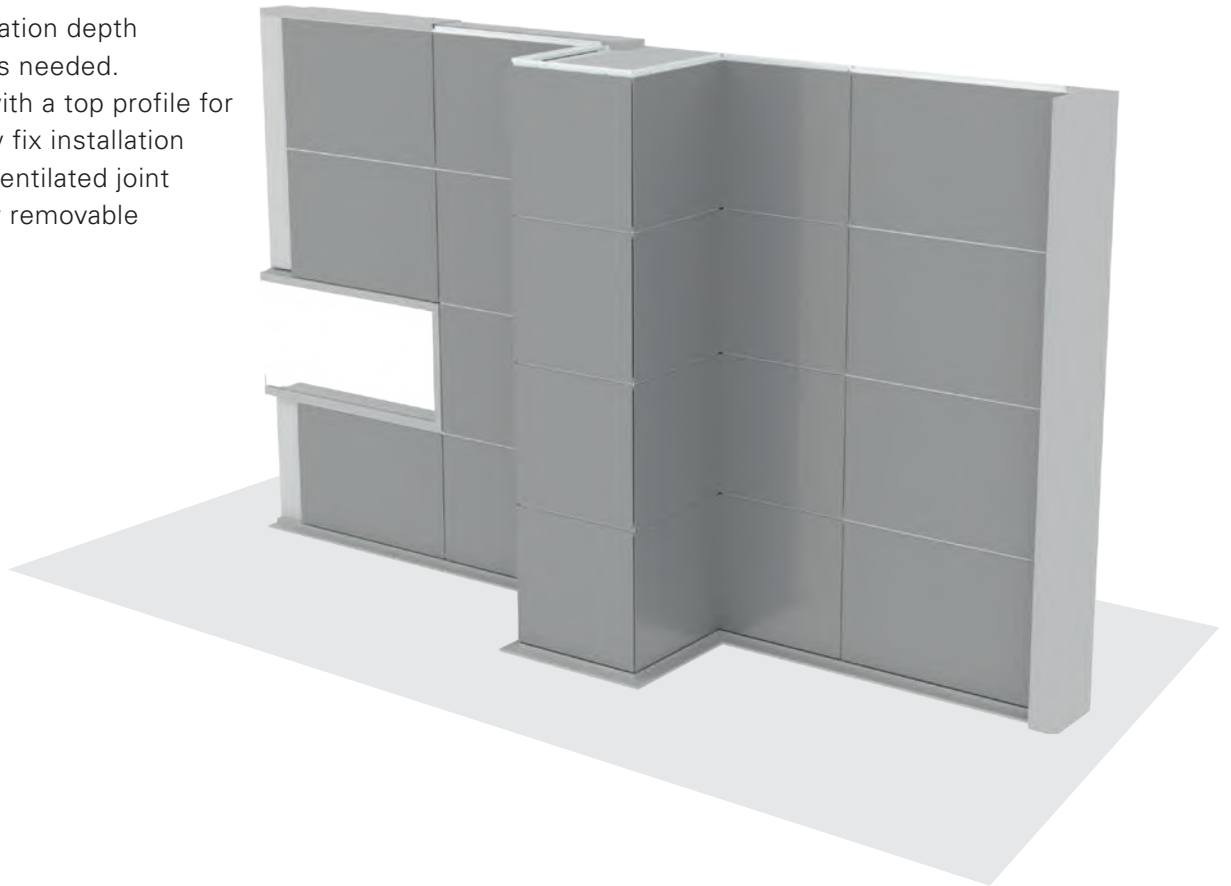
HORIZONTAL SECTION

QuadroClad® QC200 Horizontal

QuadroClad® QC200 is our ULTIMATE panel, it is a fully engineered panel with aluminum extrusion frames on four sides. Our specially designed extrusion top profile ensures easy screw fix installation on every substructure.

FEATURES

- Low installation depth
- Fewer parts needed.
- Provided with a top profile for easy screw fix installation
- A closed, ventilated joint
- Individually removable



| SPECIFICATION | |
|--------------------------------|------------------------|
| Maximum panel width | 1550 mm |
| Maximum panel length | 6000 mm ⁽¹⁾ |
| Panel thickness | 25 mm |
| Joint width | 10 - 12.5 - 15 mm |
| Cavity | Min. 10 mm |
| Available finishes & materials | See page 4 |

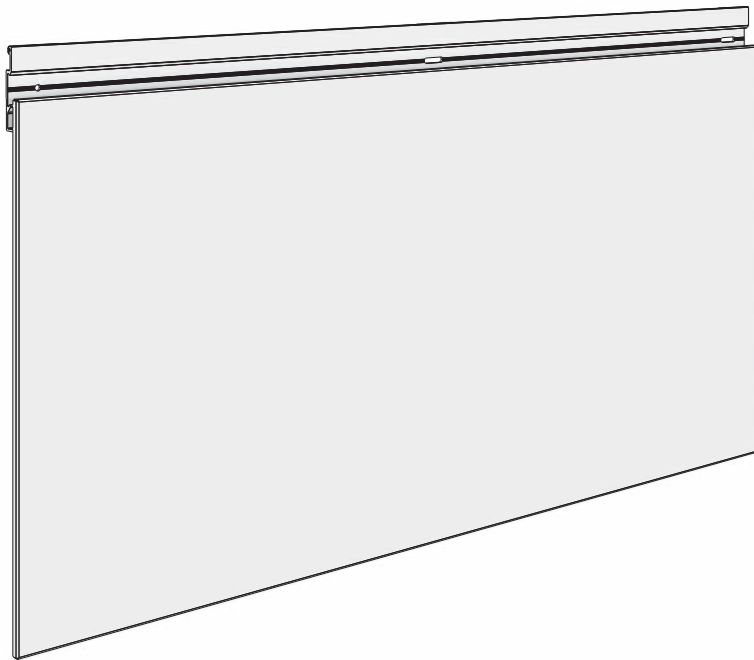
⁽¹⁾ Larger panels on request

Project : Hakrinbank Tourtonne, Paramaribo, Suriname
 Architect : Aurora Architects
 Product : QuadroClad® QC200



HUNTERDOUGLAS® QC200 PANEL PARTS

ASSEMBLED ELEMENTS

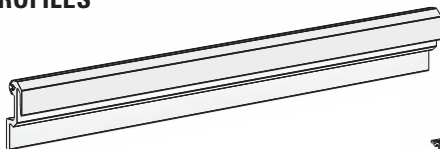


QC200 Panel
C405850000

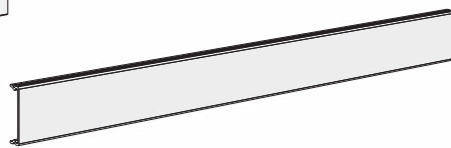


QC200 Panel

PROFILES

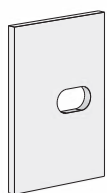


Start profile
Grey C781877010
Black C78187ANOZ

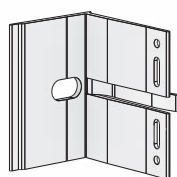


QC200 Cover profile (*optional*)
C785720000

SUBSTRUCTURE EXAMPLE (Non-HD)



Insulation bracket



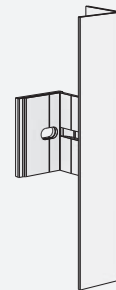
Wall bracket



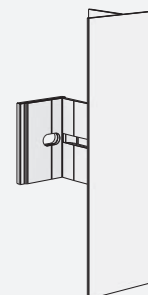
L profile



T profile



Substructure - edge

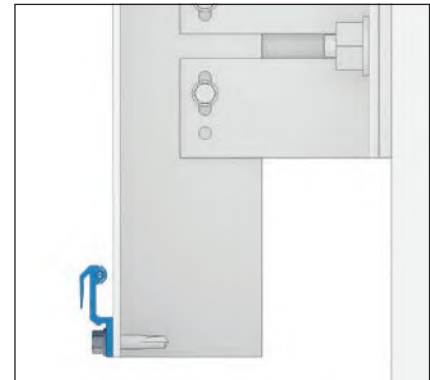
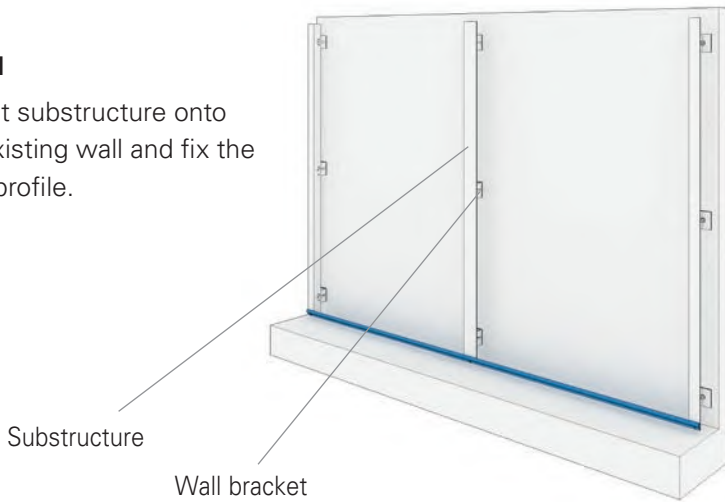


Substructure - joint

INSTALLATION*

STEP 1

Mount substructure onto the existing wall and fix the start profile.



Start profile

STEP 2

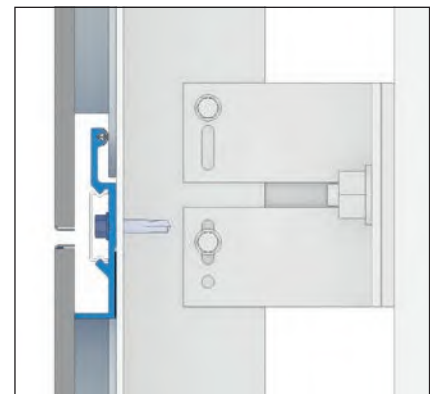
Hook on the first panel into position. Then screw fix the panel using the integrated profile.



Panel hooked onto the start profile

STEP 3

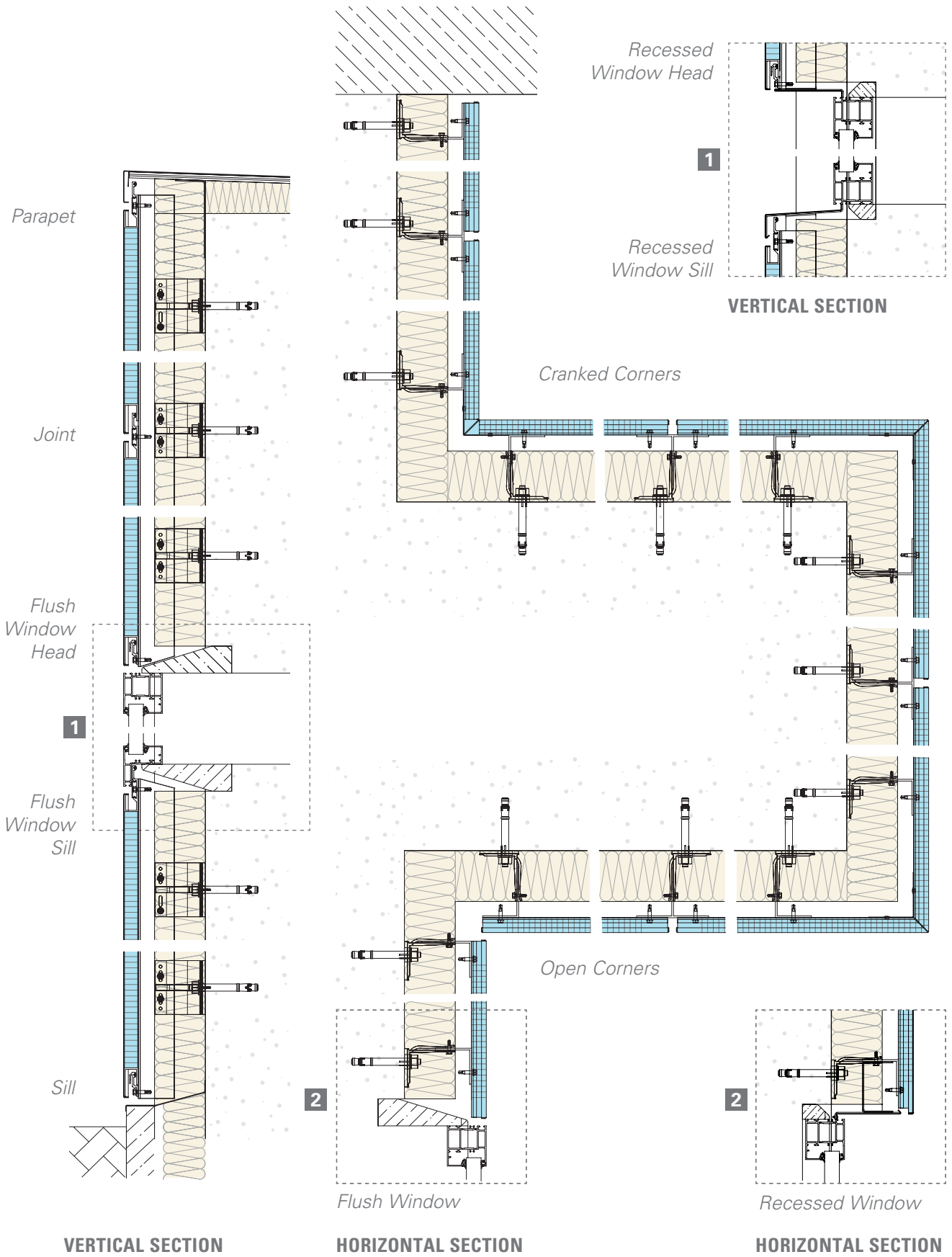
Repeat the process by sliding panels into the integrated profiles.



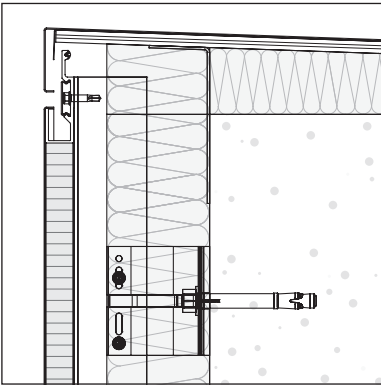
Centre fixing

* For detailed technical information please download our installation manual from the website.

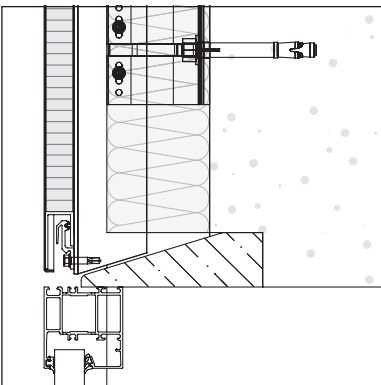
QC200 SYSTEM DETAILS



DETAILS

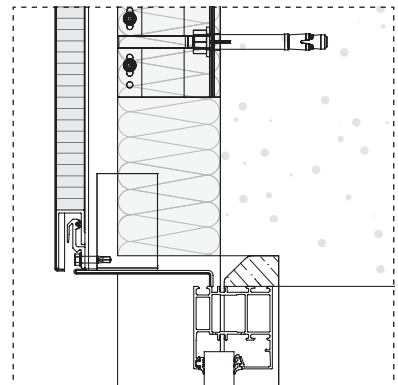


Parapet

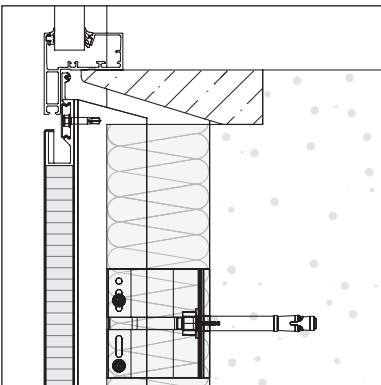


Flush Window Head

Flush or Recessed Window Head

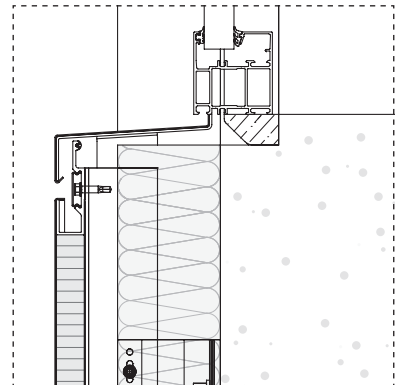


Recessed Window Head

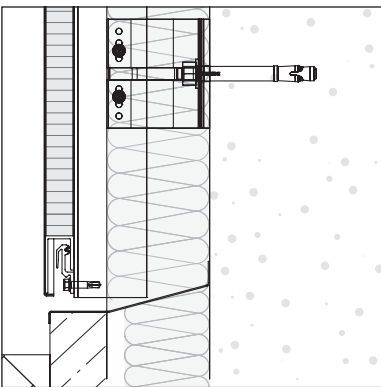


Flush Window Sill

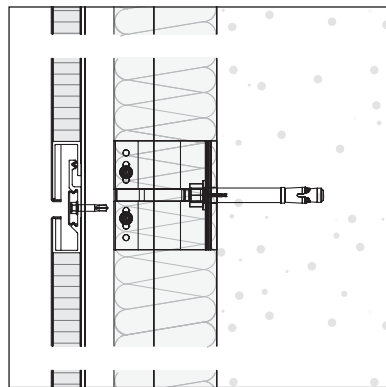
Flush or Recessed Window Sill



Recessed Window Sill

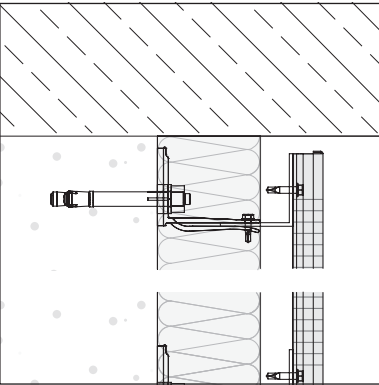


Sill

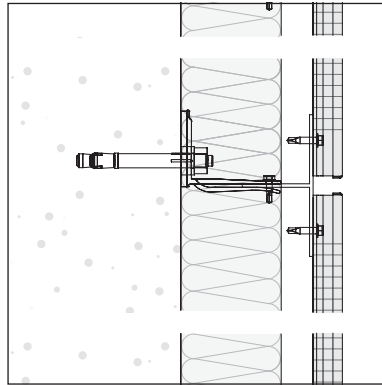


Horizontal Joint

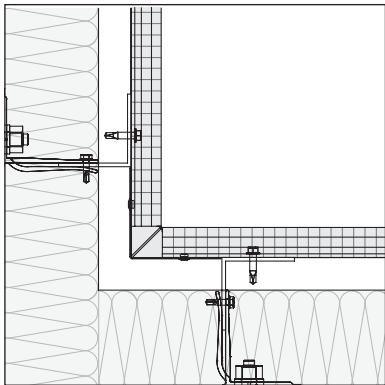
VERTICAL SECTION



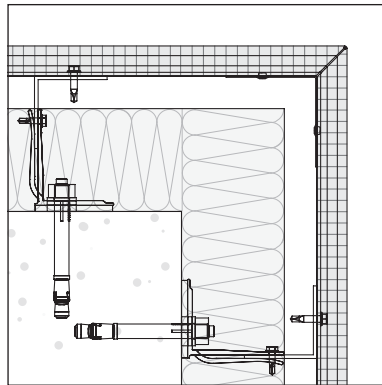
Wall Jamb



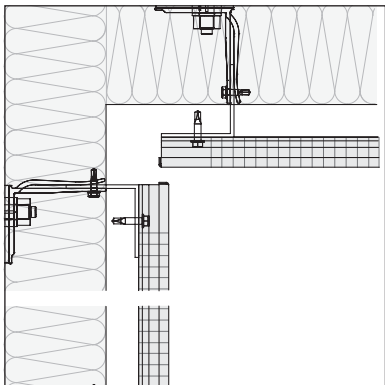
Vertical Joint



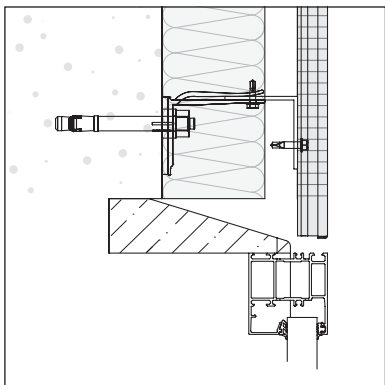
Cranked Corner Inside



Cranked Corner Outside

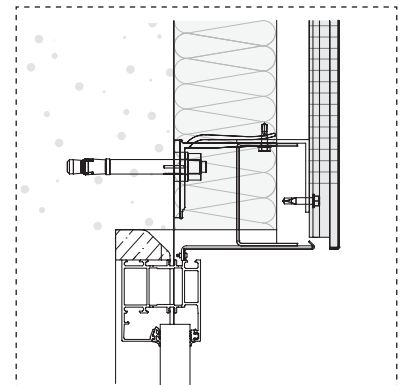


Open Corner Inside



Flush Window

Flush or Recessed Window



Recessed Window

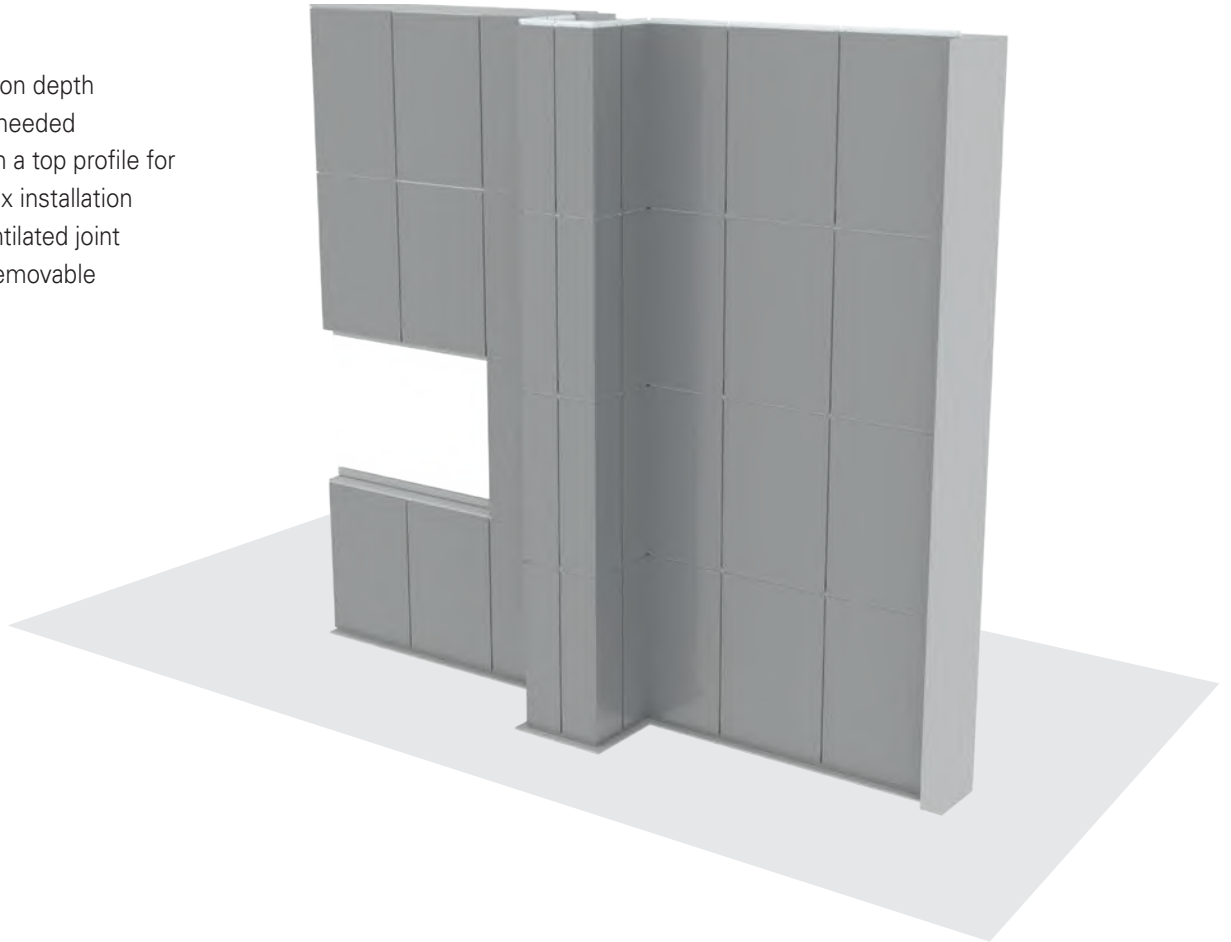
HORIZONTAL SECTION

QuadroClad® QC200 Vertical

QuadroClad® QC200 is our ULTIMATE panel, it is a fully engineered panel with aluminum extrusion frames on four sides. Our specially designed extrusion top profile ensures easy screw fix installation on every substructure.

FEATURES

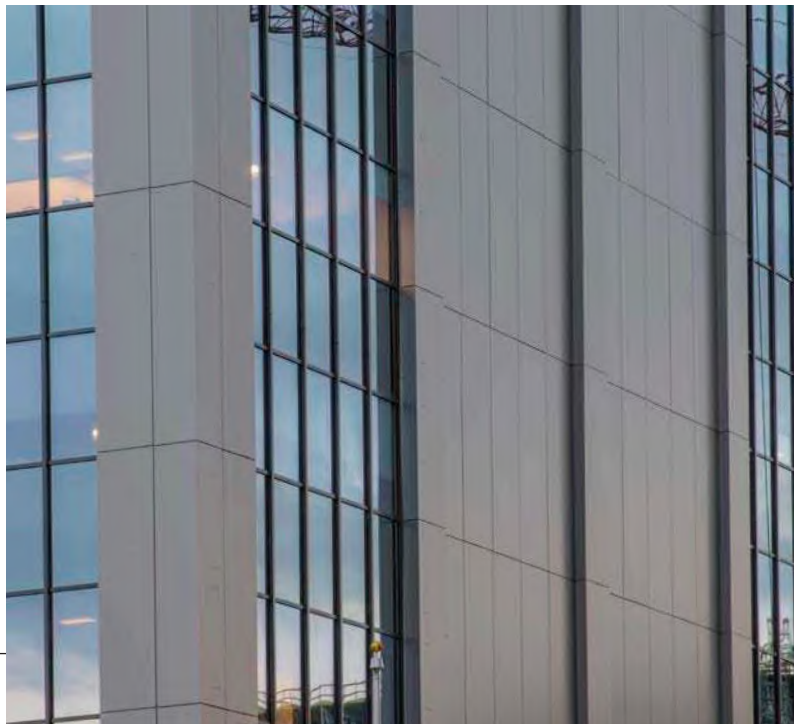
- Low installation depth
- Fewer parts needed
- Provided with a top profile for easy screw fix installation
- A closed, ventilated joint
- Individually removable



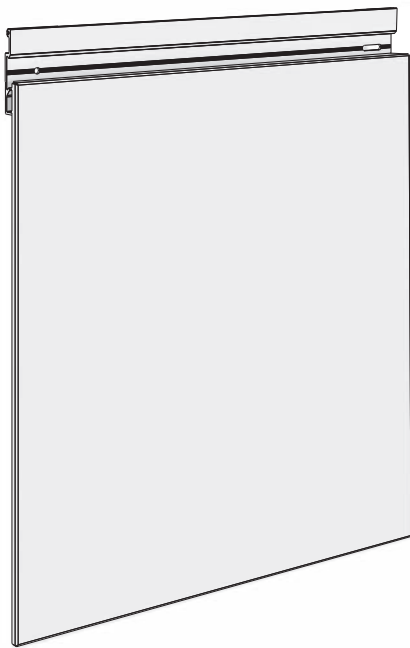
| SPECIFICATION | |
|--------------------------------|------------------------|
| Maximum panel width | 1550 mm |
| Maximum panel length | 6000 mm ⁽¹⁾ |
| Panel thickness | 25 mm |
| Joint width | 10 - 12.5 - 15 mm |
| Cavity | Min. 10 mm |
| Available finishes & materials | See page 4 |

⁽¹⁾ Larger panels on request

Project : ANB Bank - Cherry Creek North, Denver, USA
 Architect: Open Studio Architecture
 Product : QuadroClad® QC200

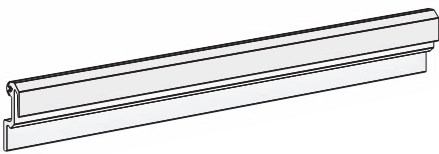


HUNTERDOUGLAS® QC200 PANEL PARTS

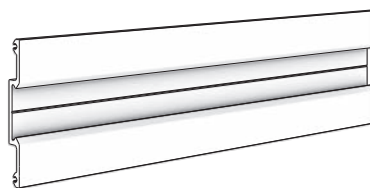


QC200 Panel
C405800000

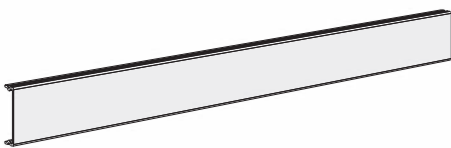
PROFILES



Start profile
Grey C781877010
Black C78187ANOZ



Omega profile
Grey C781857010
Black C78185ANOZ



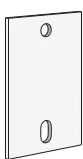
QC200 Cover profile
C785720000

ASSEMBLED ELEMENTS



QC200 Panel

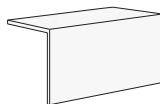
SUBSTRUCTURE EXAMPLE (Non-HD)



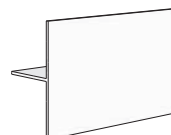
Insulation bracket



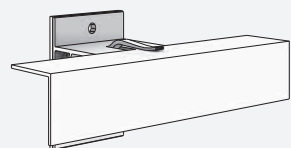
Wall bracket



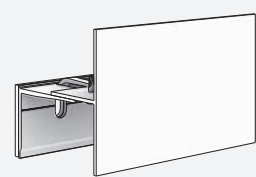
L profile



T profile



Substructure L profile

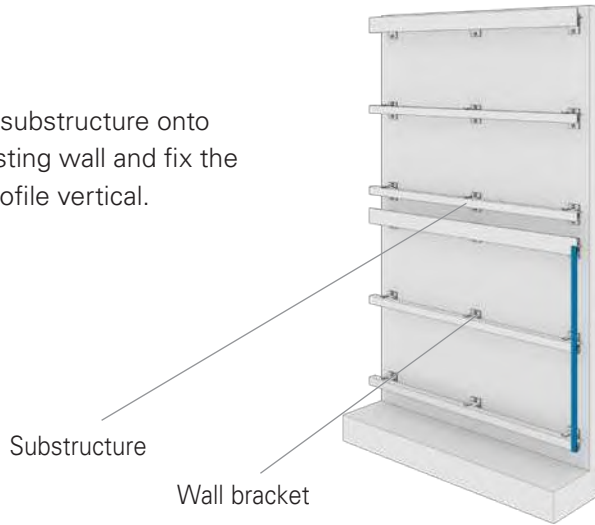


Substructure T profile

INSTALLATION*

STEP 1

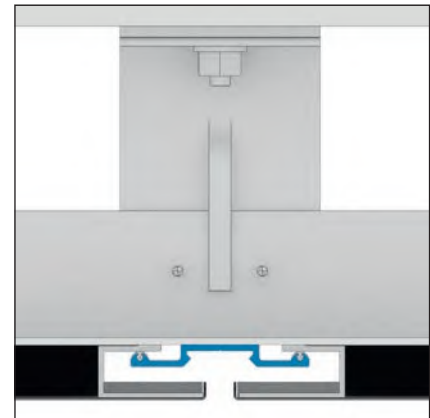
Mount substructure onto the existing wall and fix the start profile vertical.



Start profile (top view)

STEP 2

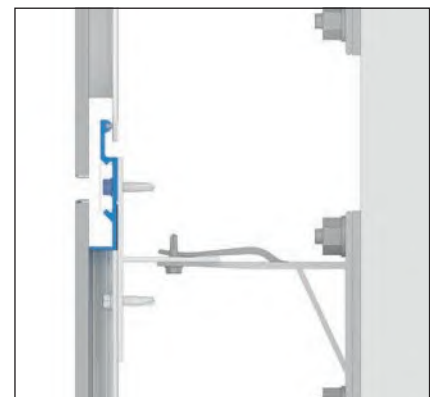
Hook on the first panel into the Omega profile and then screw fix the panel using the integrated profile.



Omega profile (top view)

STEP 3

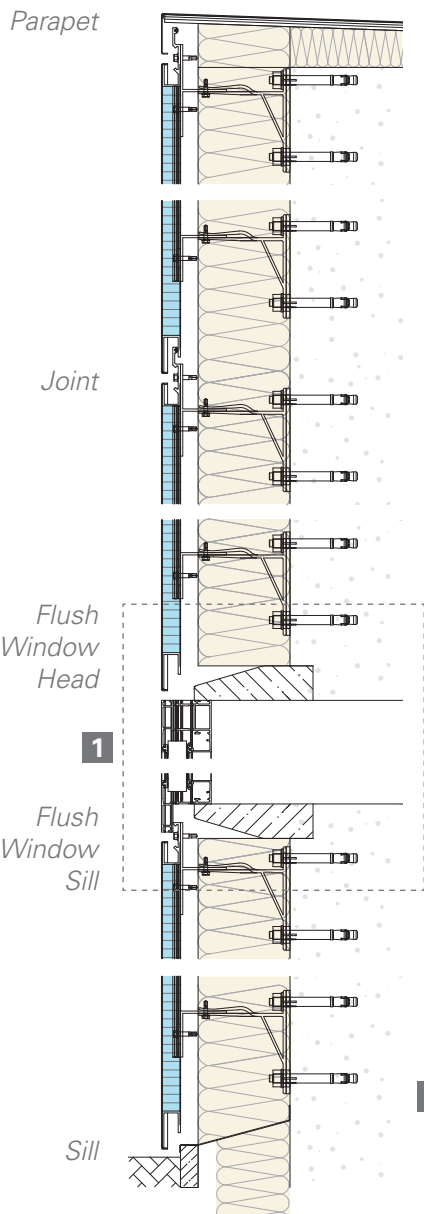
Repeat the process by sliding the panels into the integrated profiles.



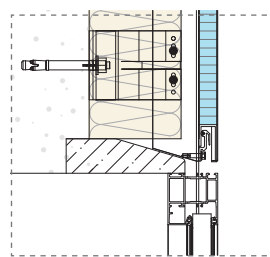
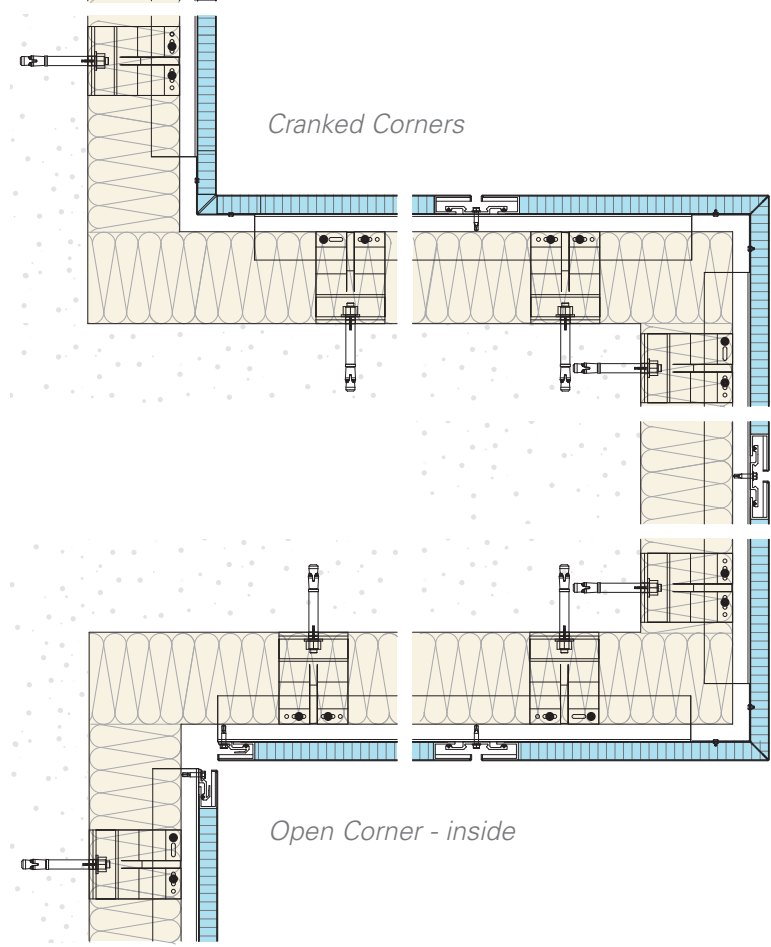
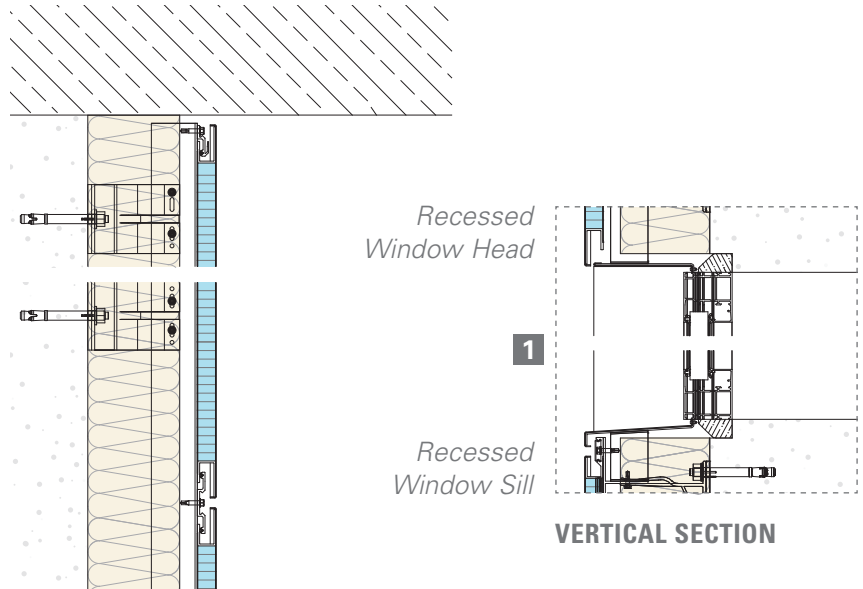
Centre fixing

* For detailed technical information please download our installation manual from the website.

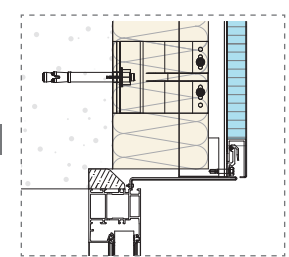
QC200 SYSTEM DETAILS



VERTICAL SECTION

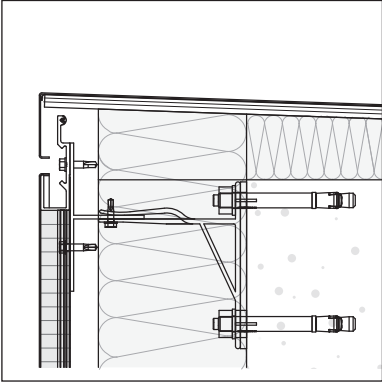


HORIZONTAL SECTION

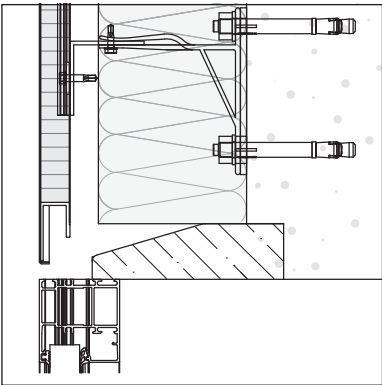


HORIZONTAL SECTION

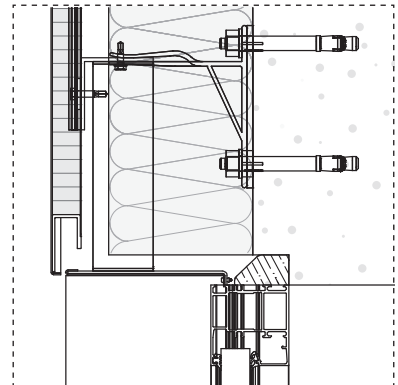
DETAILS



Parapet

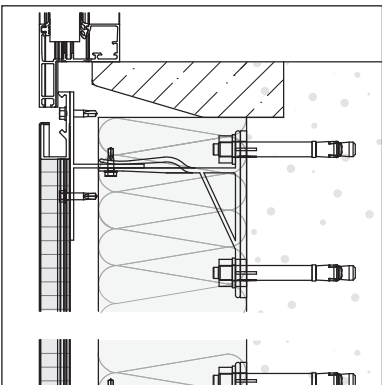


Flush Window Head

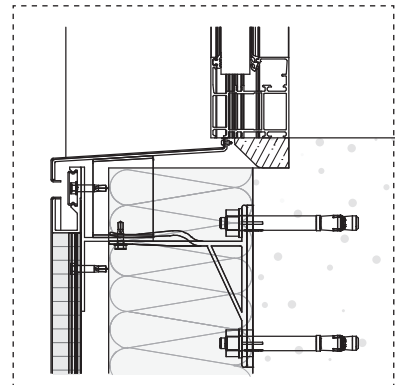


Recessed Window Head

Flush or Recessed Window Head →

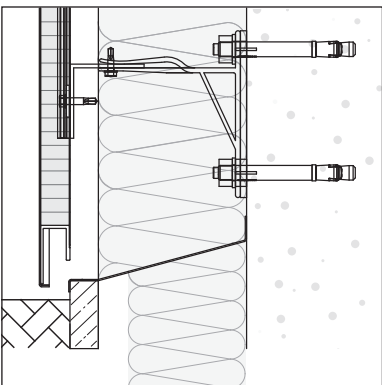


Flush Window Sill

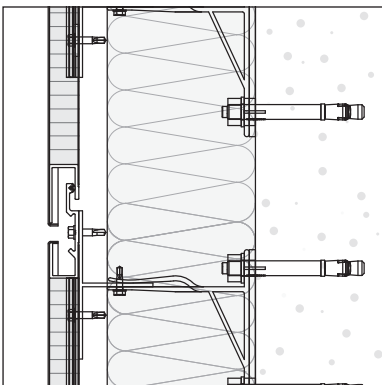


Recessed Window Sill

Flush or Recessed Window Sill →

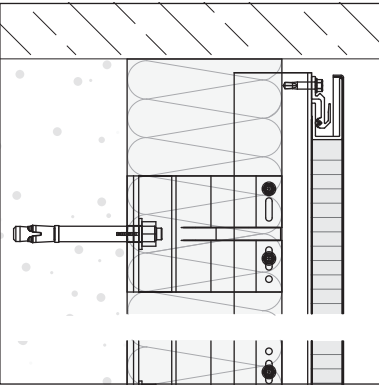


Sill

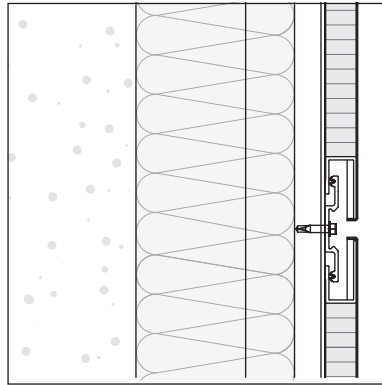


Horizontal Joint

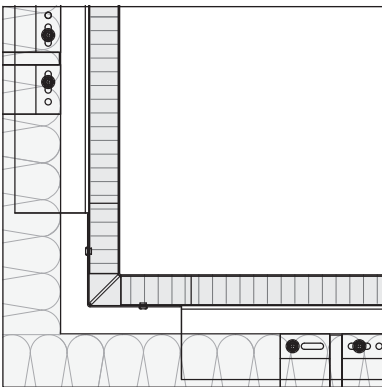
VERTICAL SECTION



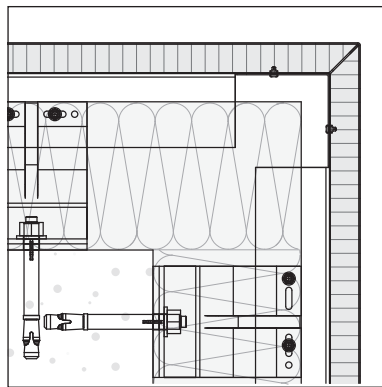
Wall Jamb



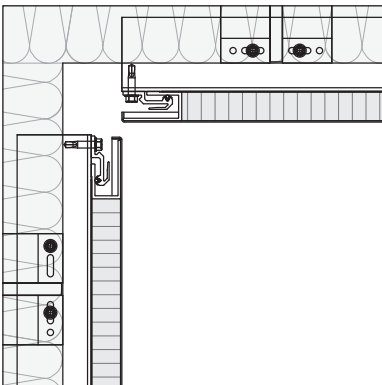
Vertical Joint



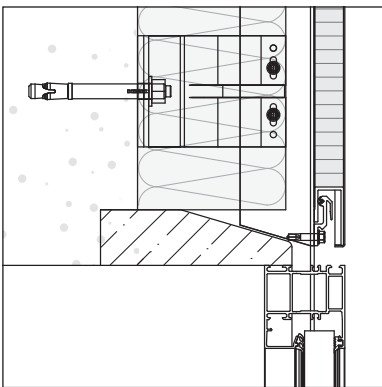
Cranked Corner Inside



Cranked Corner Outside

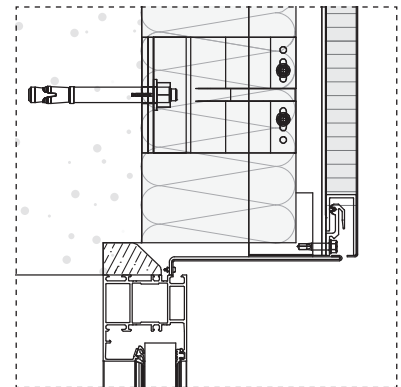


Open Corner - Inside



Flush Window

Flush or Recessed Window



Recessed Window

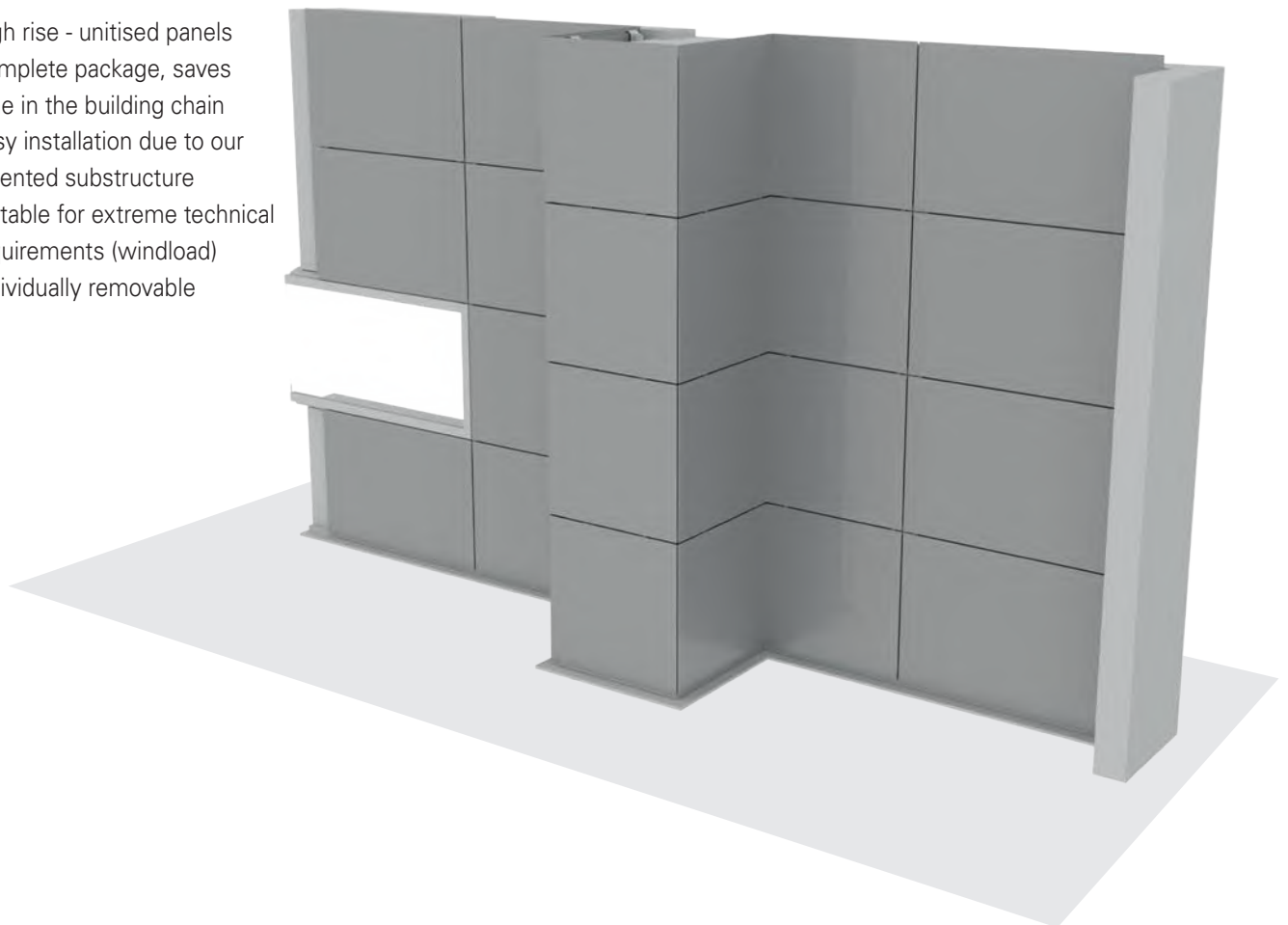
HORIZONTAL SECTION

QuadroClad® QC300 Horizontal

QuadroClad® QC300 is our COMPLETE system and as its name suggests is our most complete façade solution. QC300 features free hanging panels with a ventilated cavity, with open joints that are designed to reduce surface wind loads.

FEATRURES

- High rise - unitised panels
- Complete package, saves time in the building chain
- Easy installation due to our patented substructure
- Suitable for extreme technical requirements (windload)
- Individually removable



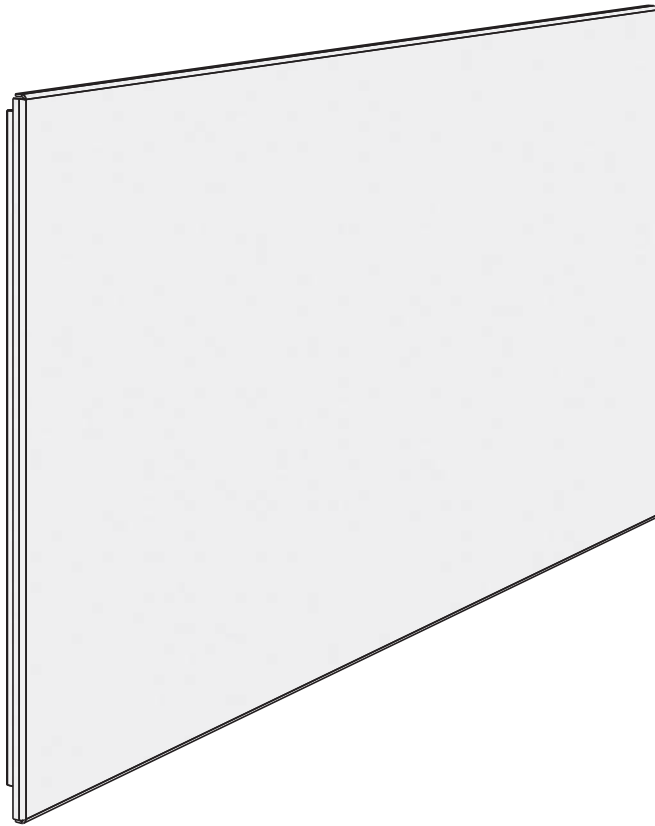
| SPECIFICATION | |
|--------------------------------|------------------------|
| Maximum panel width | 1550 mm |
| Maximum panel length | 6000 mm ⁽¹⁾ |
| Panel thickness | 25 mm |
| Joint width | 10 mm |
| Cavity | Min. 10 mm |
| Available finishes & materials | See page 4 |

⁽¹⁾ Larger panels on request

Project : Centre for Chemistry and Biomedicine, Innsbruck, Austria
 Architect : Din A4 Architecture
 Product : QuadroClad® QC300



HUNTERDOUGLAS® QC300 PANEL PARTS



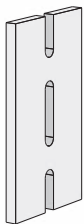
QC300 Panel
C405570000

ASSEMBLED ELEMENTS

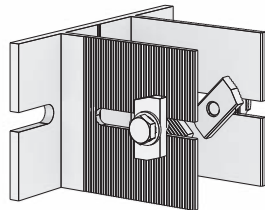


QC300 Panel

HUNTERDOUGLAS® SUBSTRUCTURE



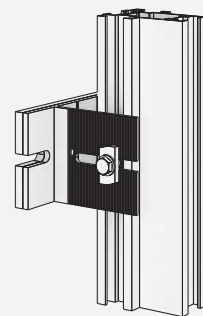
Insulation bracket
C793200000



Wall bracket 100 - 150 mm
C782310000

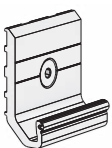


Standard rail
C782300000

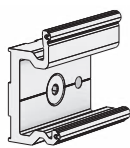


Substructure

HUNTERDOUGLAS® CLAMPS



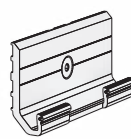
Bottom fixing
plate mid
C781490000



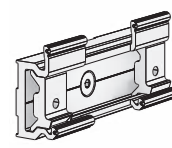
Centre fixing
plate mid
C781710000



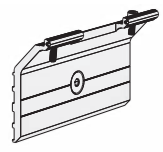
Top fixing
plate mid
C781750000



Bottom fixing
plate joint
C781480000



Centre fixing
plate joint
C781700000

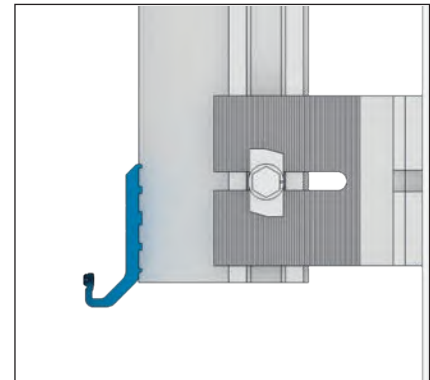
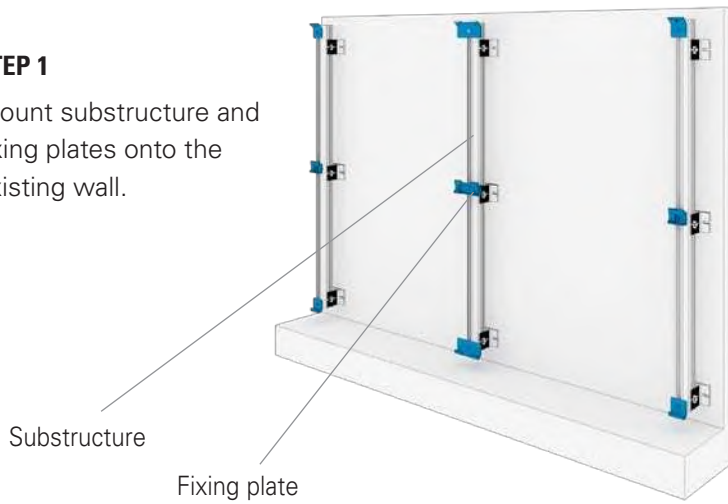


Top fixing
plate joint
C781740000

INSTALLATION*

STEP 1

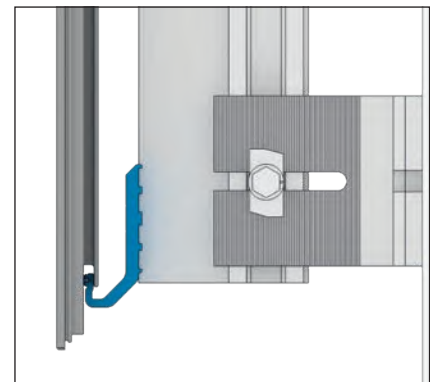
Mount substructure and fixing plates onto the existing wall.



Bottom fixing

STEP 2

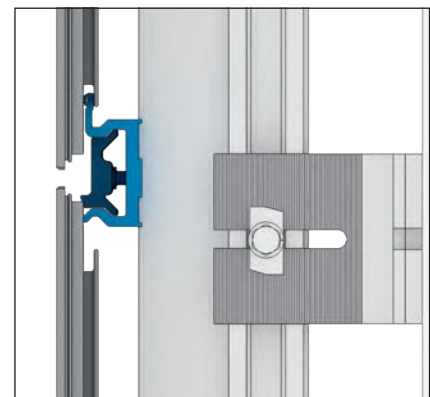
Lock the panels onto the fixing plates using the integrated retainers.



Panel hooked onto the bottom fixing

STEP 3

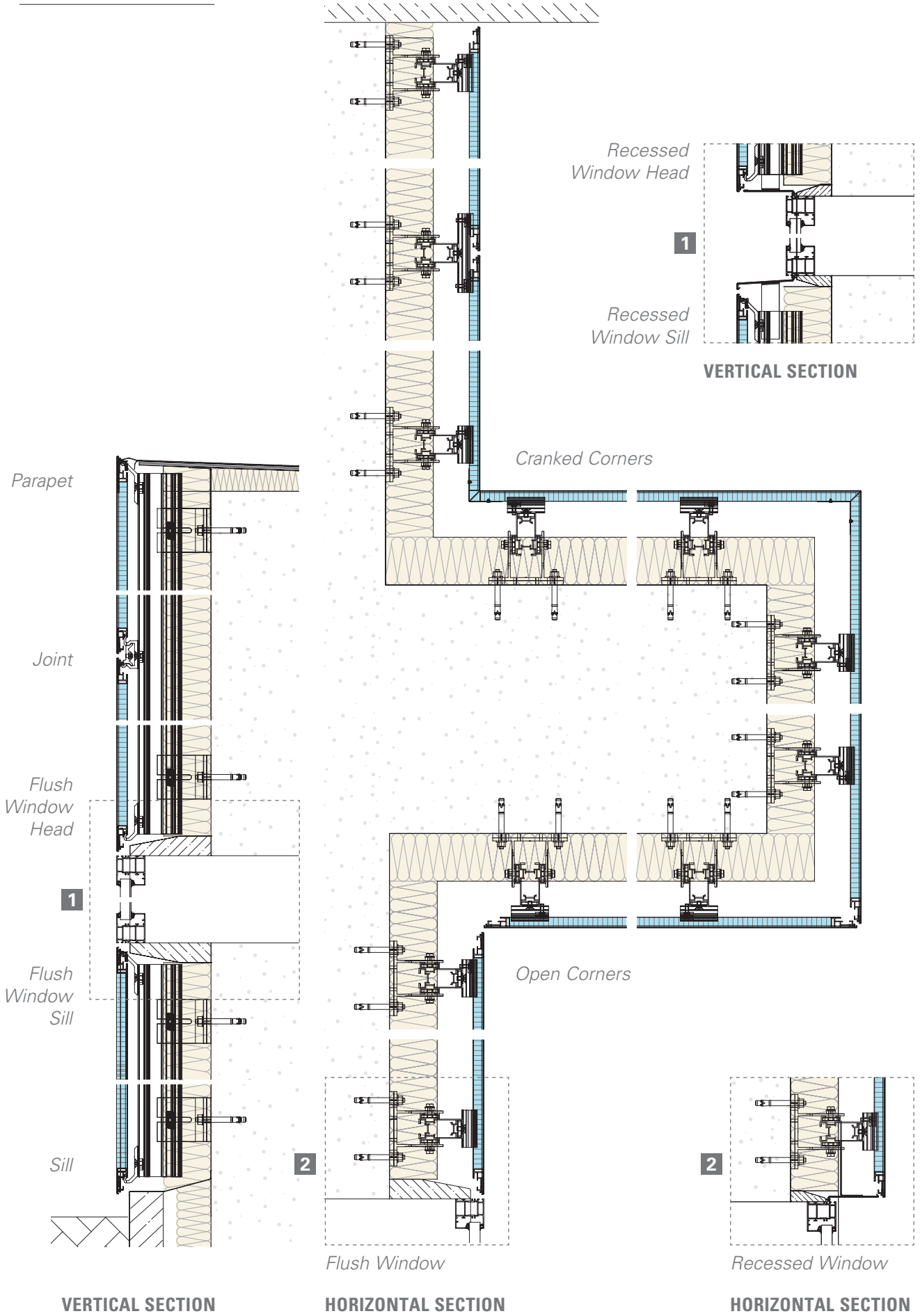
Repeat the process by fixing the panels.



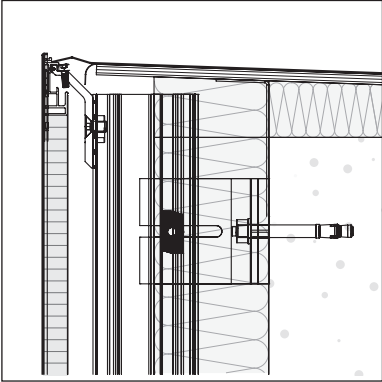
Centre fixing

* For detailed technical information please download our installation manual from the website.

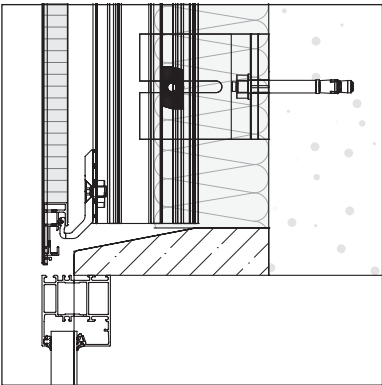
QC300 SYSTEM DETAILS



DETAILS

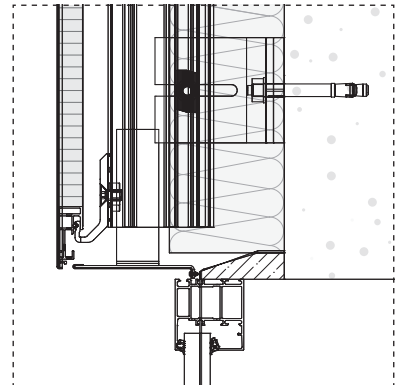


Parapet

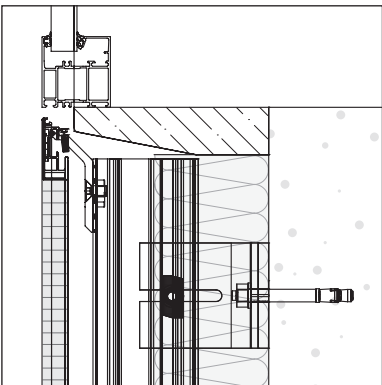


Flush Window Head

Flush or Recessed Window Head →

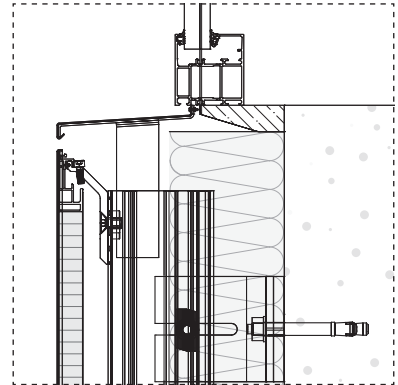


Recessed Window Head

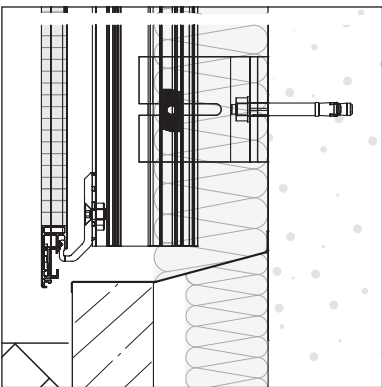


Flush Window Sill

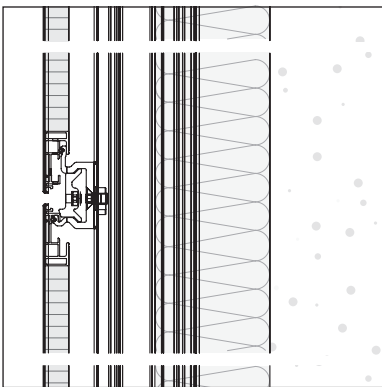
Flush or Recessed Window Sill →



Recessed Window Sill

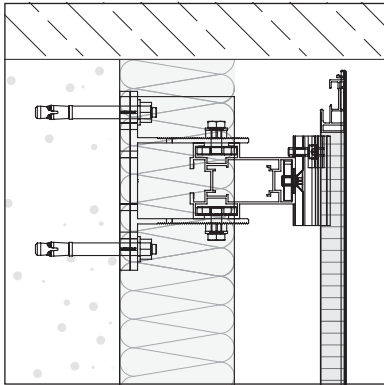


Sill

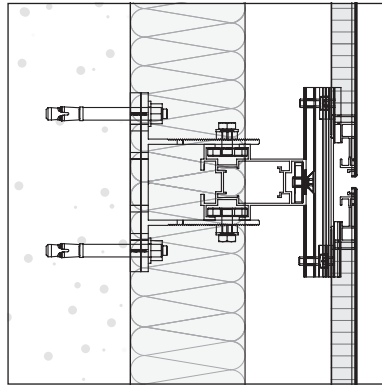


Horizontal Joint

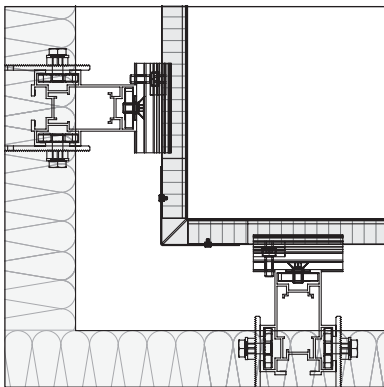
VERTICAL SECTION



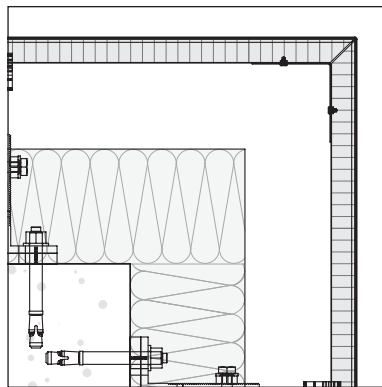
Wall Jamb



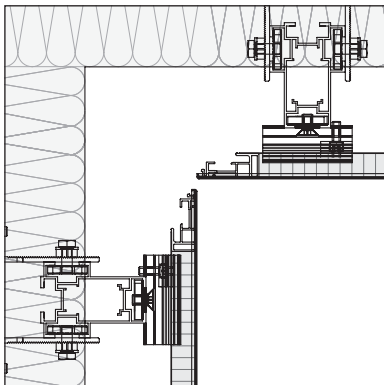
Vertical Joint



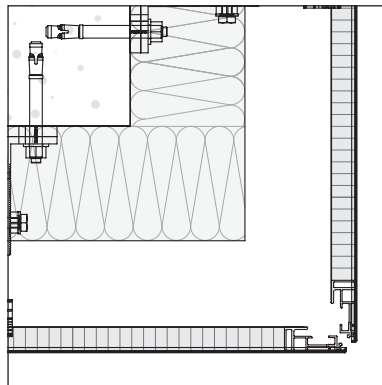
Cranked Corner Inside



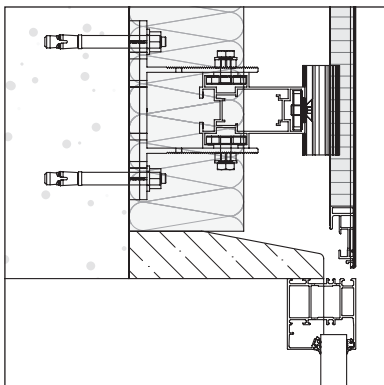
Cranked Corner Outside



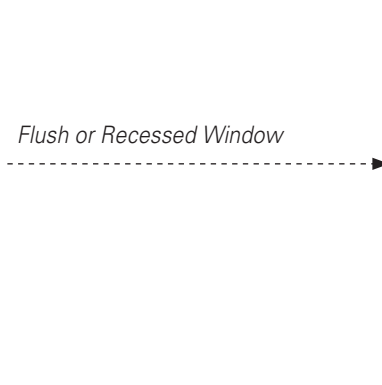
Open Corner Inside



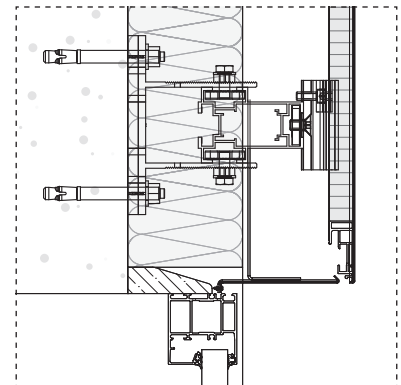
Open Corner Outside



Flush Window



Flush or Recessed Window



Recessed Window

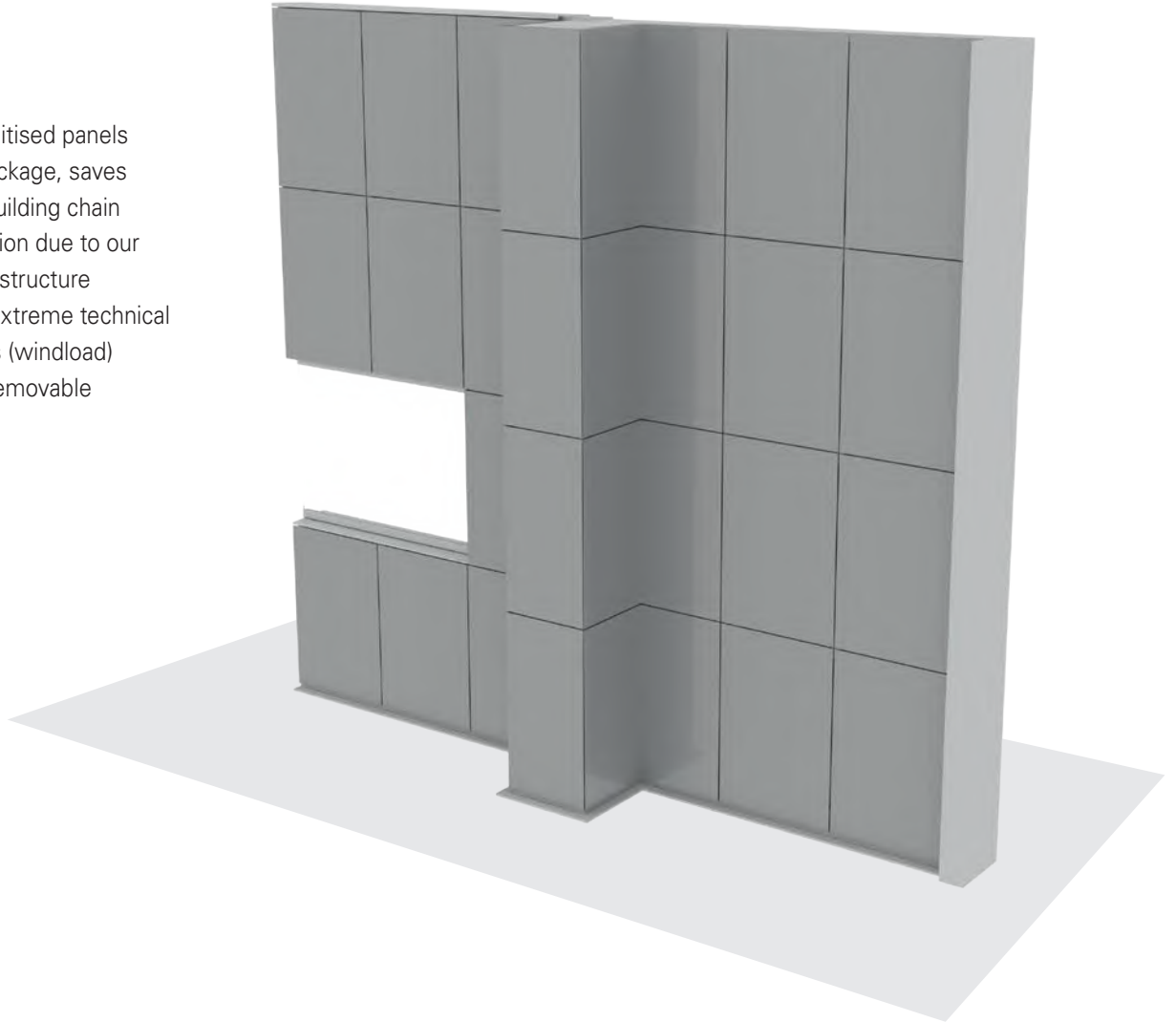
HORIZONTAL SECTION

QuadroClad® QC300 Vertical

QuadroClad® QC300 is our COMPLETE system and as its name suggests is our most complete façade solution. QC300 features free hanging panels with a ventilated cavity, with open joints that are designed to reduce surface wind loads.

FEATURES

- High rise - unitised panels
- Complete package, saves time in the building chain
- Easy installation due to our patented substructure
- Suitable for extreme technical requirements (windload)
- Individually removable



| SPECIFICATION | |
|--------------------------------|------------------------|
| Maximum panel width | 1550 mm |
| Maximum panel length | 6000 mm ⁽¹⁾ |
| Panel thickness | 25 mm |
| Joint width | 10 mm |
| Cavity | Min. 10 mm |
| Available finishes & materials | See page 4 |

⁽¹⁾ Larger panels on request

Project : Helicon Education, 's-Hertogenbosch, The Netherlands
 Architect : SP Architecten / Architecten aan de Maas
 Product : QuadroClad® QC300 Vertical



HUNTERDOUGLAS® QC300 PANEL PARTS

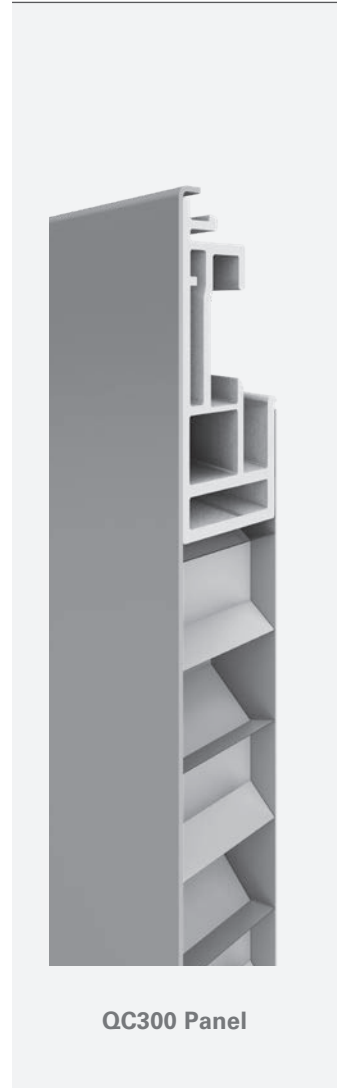


QC300 Panel
C405560000



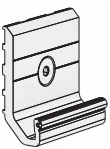
Mini rail
C782260000

ASSEMBLED ELEMENTS

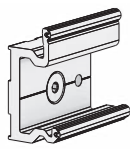


QC300 Panel

HUNTERDOUGLAS® RAIL AND CLAMPS



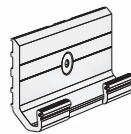
Bottom fixing
plate mid
C781490000



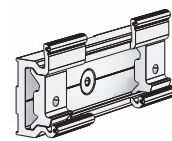
Centre fixing
plate mid
C781710000



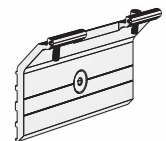
Top fixing
plate mid
C781750000



Bottom fixing
plate joint
C781480000

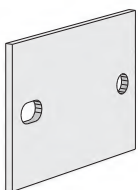


Centre fixing
plate joint
C781700000

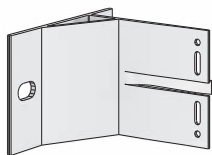


Top fixing
plate joint
C781740000

SUBSTRUCTURE EXAMPLE (Non-HD)



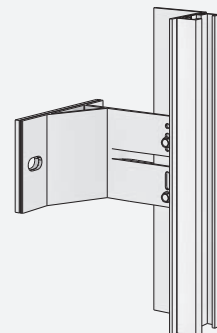
Insulation bracket



Wall bracket



L profile

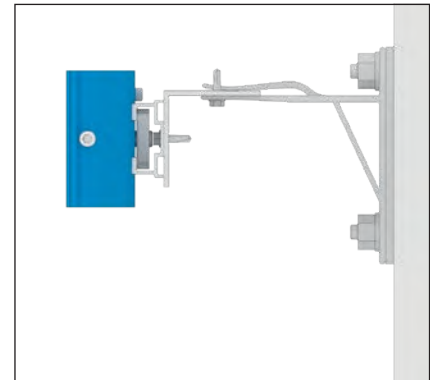
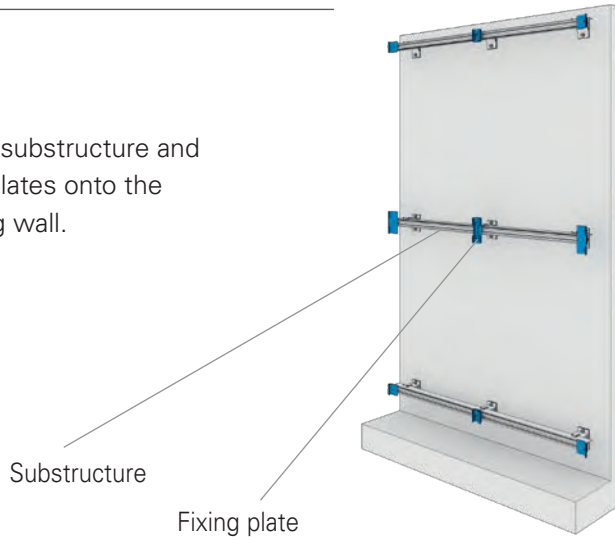


Substructure

INSTALLATION*

STEP 1

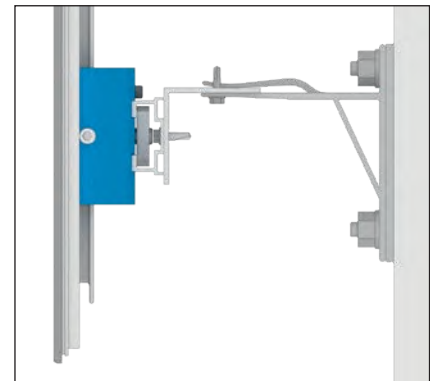
Mount substructure and fixing plates onto the existing wall.



Bottom fixing

STEP 2

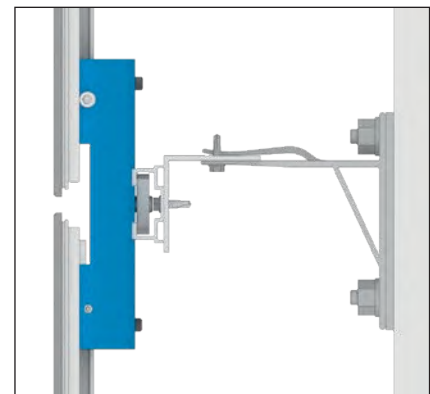
Lock the panels onto the fixing plates using the integrated retainers.



Panel hooked onto the bottom fixing

STEP 3

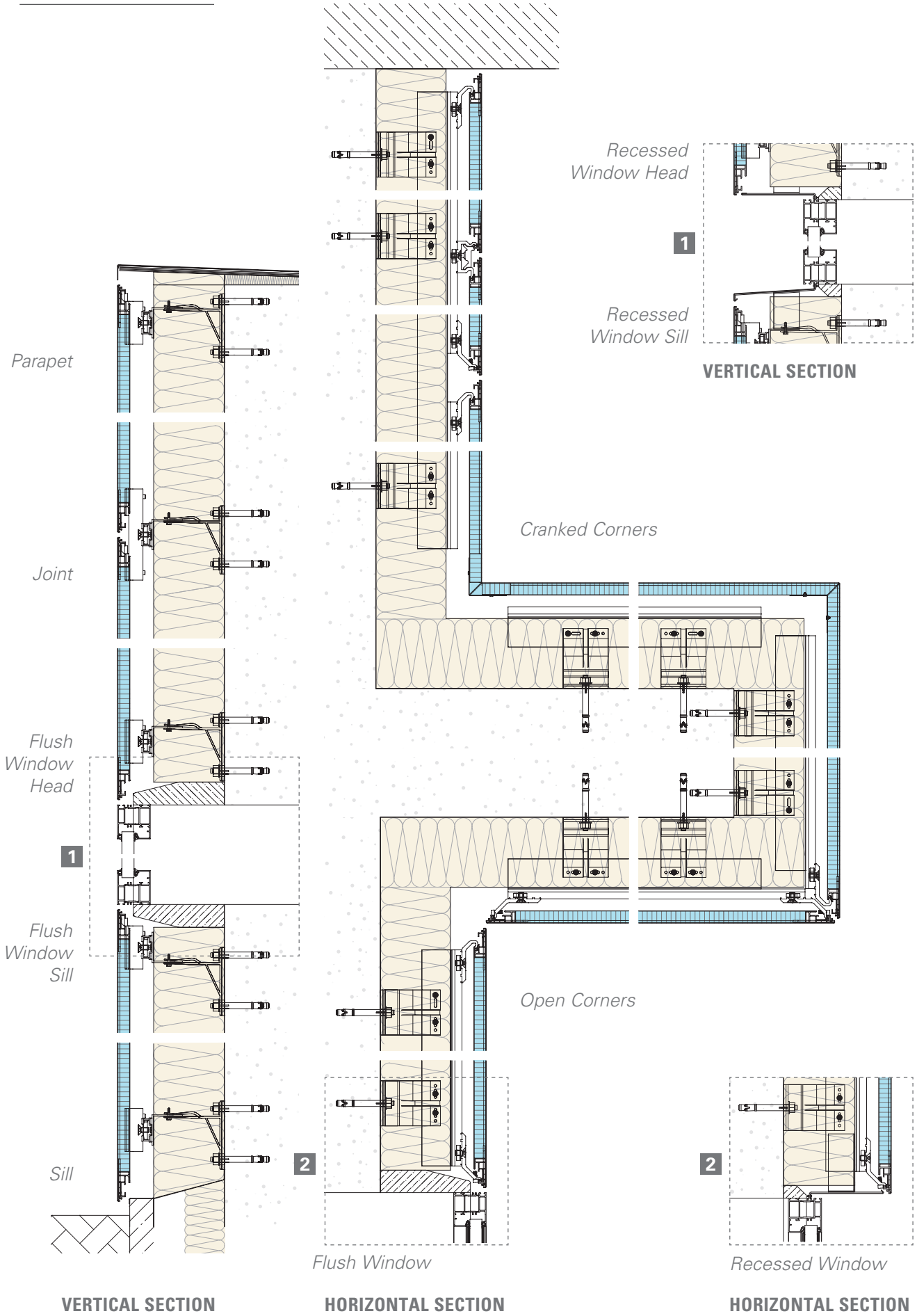
Repeat the process by fixing the panels.



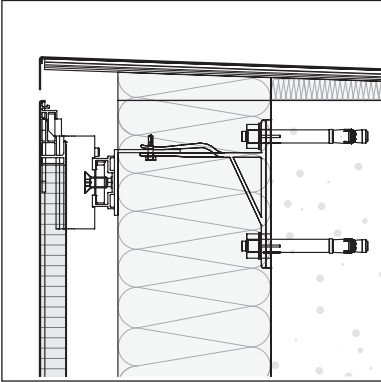
Centre fixing

* For detailed technical information please download our installation manual from the website.

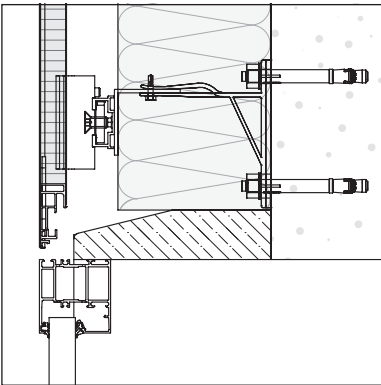
QC300 SYSTEM DETAILS



DETAILS

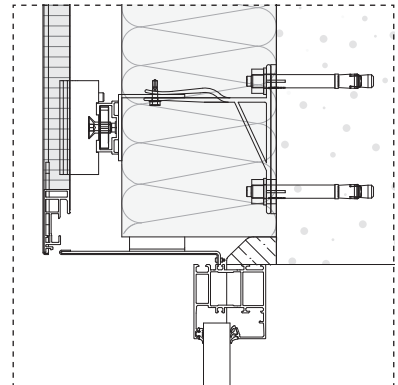


Parapet

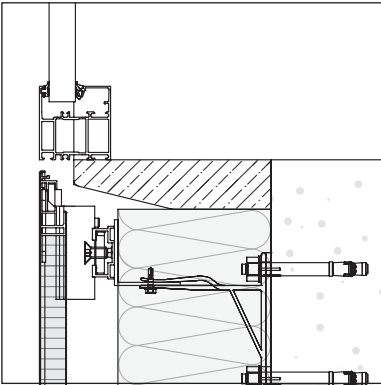


Flush Window Head

Flush or Recessed Window Head

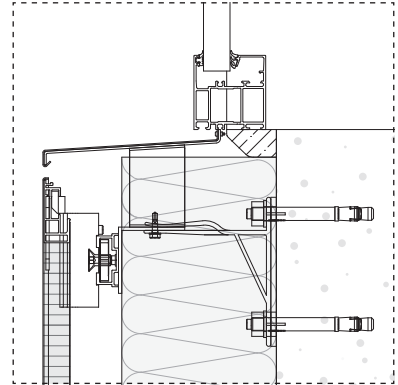


Recessed Window Head

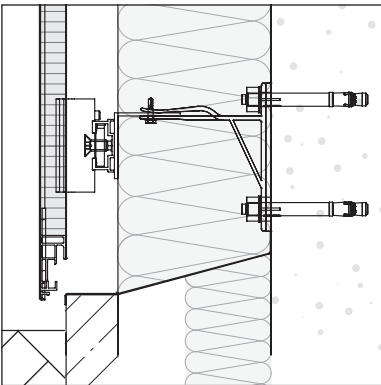


Flush Window Sill

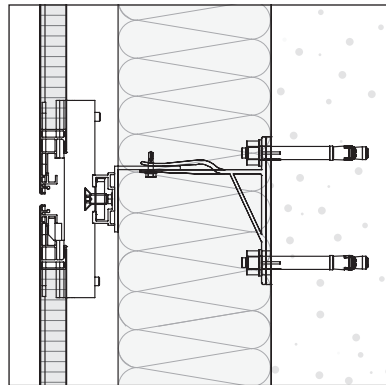
Flush or Recessed Window Sill



Recessed Window Sill

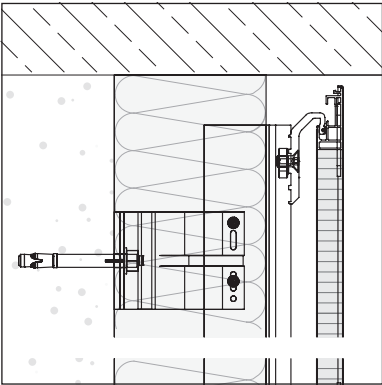


Sill

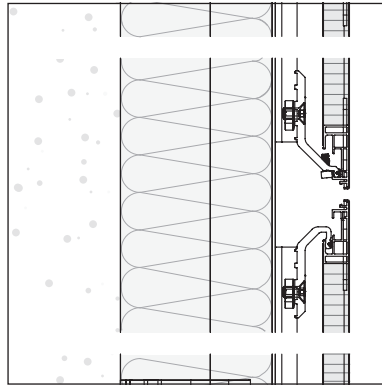


Horizontal Joint

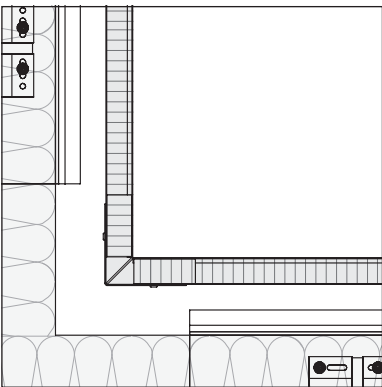
VERTICAL SECTION



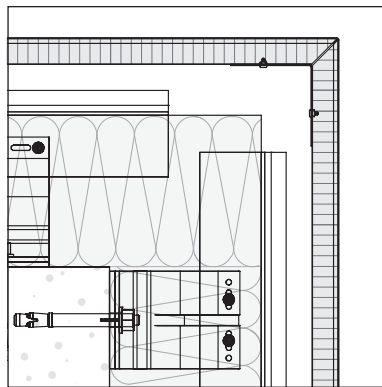
Wall Jamb



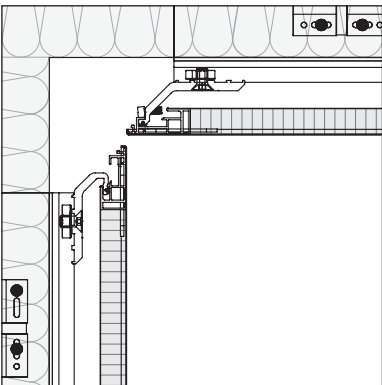
Vertical Joint



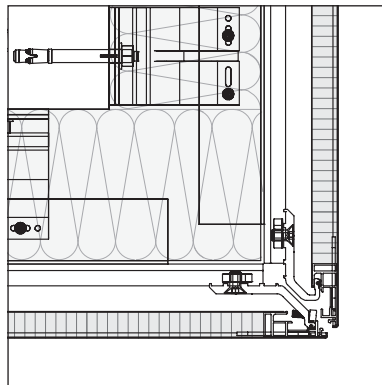
Cranked Corner Inside



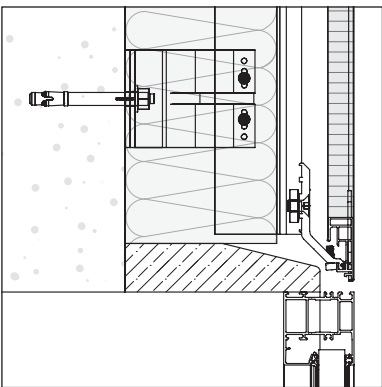
Cranked Corner Outside



Open Corner Inside

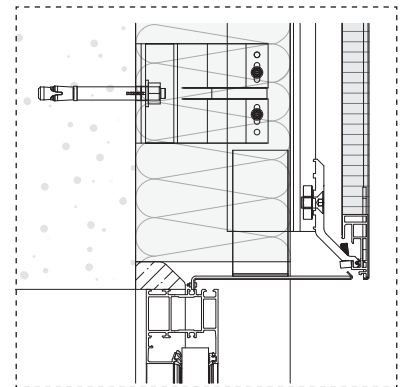


Open Corner Outside



Flush Window

Flush or Recessed Window



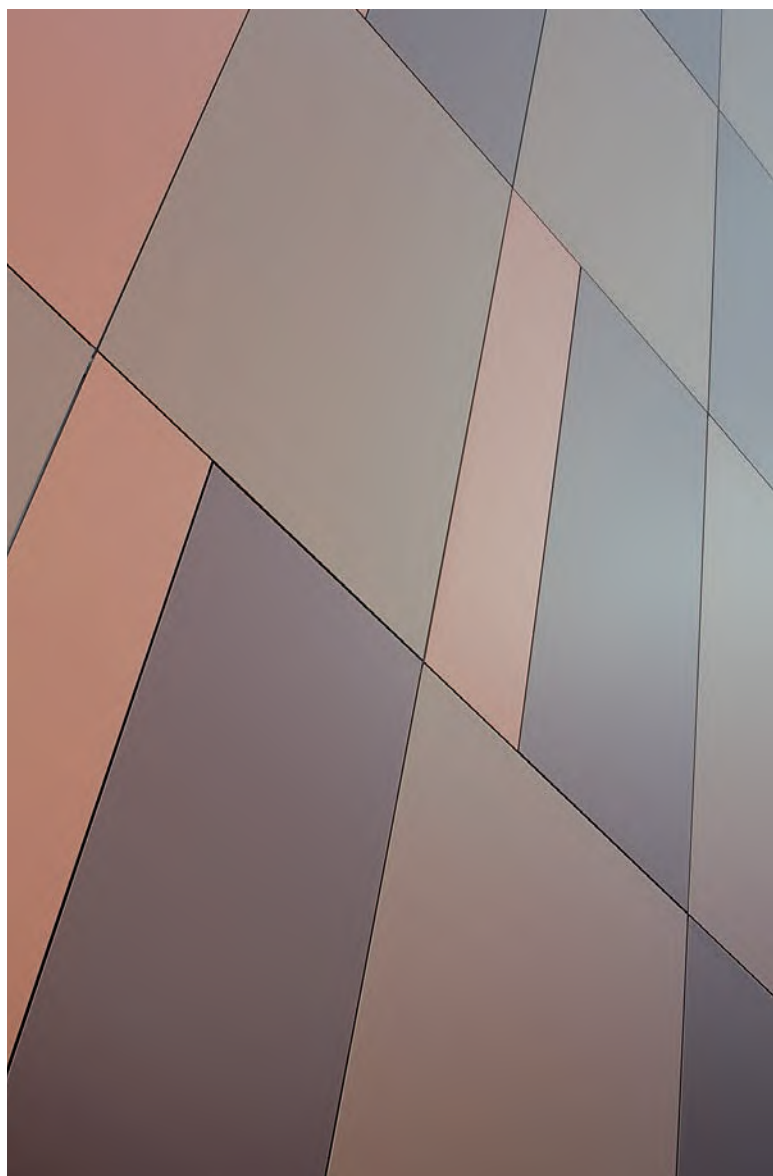
Recessed Window

HORIZONTAL SECTION

Designed to work for you

Hunter Douglas is a global player within the field of modern architecture. We understand the conflict between form and function better than anyone, and enrich the market with inspiring solutions that strengthen the aesthetic appeal of buildings and their functionality in terms of indoor climate, energy use and acoustics.

We develop clever and aesthetically appealing solutions in collaboration with architects and designers to control heat, light, sound and energy. We are also inspired by real-world challenges and ideas as well as developments in technology and materials. All our products are thought out in great detail to make a difference to both architects and end users.



© Registered trademark of Hunter Douglas - a HunterDouglas® product.
© Copyright Hunter Douglas 2018. No rights may be derived from the text or the illustrations or examples accompanying the text. Materials, parts, compositions, designs, versions, colours and the like may differ without prior warning.



Printed on
EU Ecolabel-
certified paper



▲ Sun Louvres



▲ Ceilings

Façades ▼



Architectural services

We support our business partners with a wide range of technical consulting and support services for architects and installers. We assist architects and developers with recommendations for materials, shapes, dimensions, colours and finishes. We also help create design proposals, visualisations and technical drawings. Our services to installers range from providing detailed installation drawings and instructions.

More information

Contact our **Project Support** for further help and advice on the design possibilities our applications can create.

+31 (0)594 - 55 33 33

Visit our website:

www.hunterdouglasarchitectural.eu

Hunter Douglas products and solutions are specifically designed to improve the indoor climate and save energy. They create an environment that is pleasant, healthy, productive and sustainable.



Hunter Douglas aims to produce sustainable products. Our painting and aluminium smelting processes are regarded as setting the bar for the most important standards in clean production methods. All aluminium products are 100% recyclable at the end of their lifecycle.





Ceilings



Sun Louvres



Façades

- Belgium
- Bulgaria
- Croatia / Slovenia
- Czech Republic
- Denmark
- France
- Germany
- Greece
- Hungary
- Italy
- The Netherlands
- Norway
- Poland
- Portugal
- Romania
- Russia
- Serbia
- Slovakia
- Spain
- Sweden
- Switzerland
- Turkey
- United Kingdom
- Africa
- Middle East

- Asia
- Australia
- Latin America
- North America

Hunter Douglas Architectural

Industriepark 17
P.O. Box 128 - 9350 AC Leek, The Netherlands
Tel. +31 (0)594 - 55 33 33
E-mail: facades@hde.nl
www.hunterdouglasarchitectural.eu