

ACOUSTIC TEST

REGUPOL EVERROLL COMPOSITE FLOOR NORMALIZED IMPACT SOUND PRESSURE LEVEL

Bare slab and REGUPOL everroll composite floor 4mm + 10mm = 14mm

Lab Test: CSIRO CLAYTON INR261-08-01

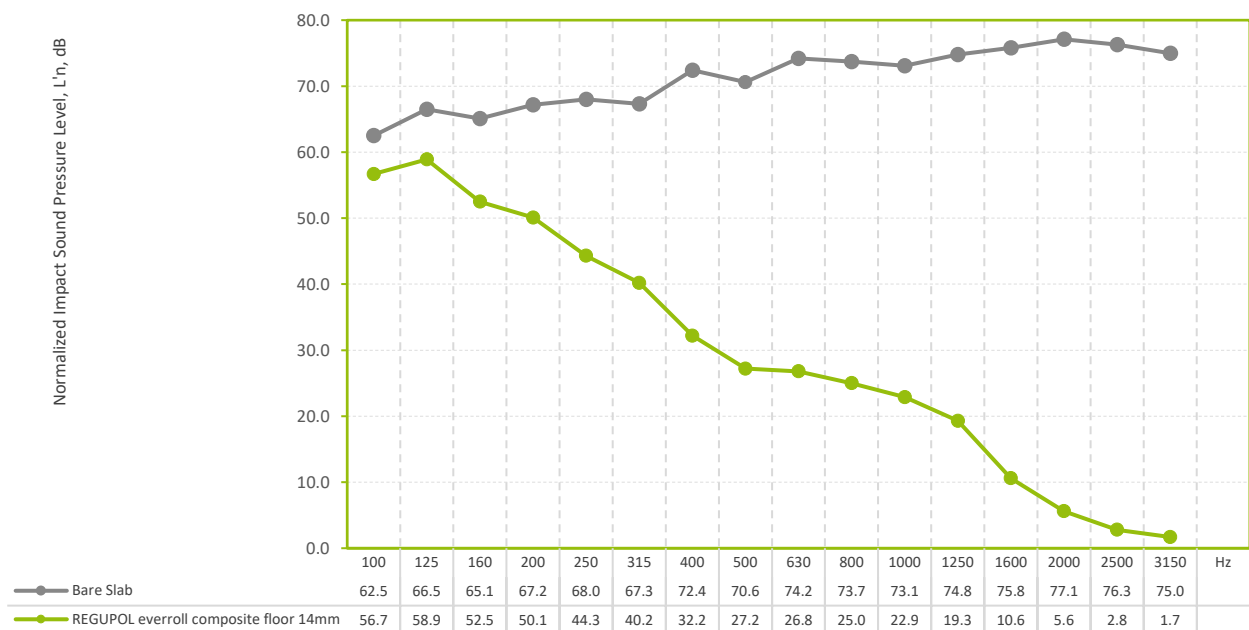
Standard: Tested in accordance with ISO 140-8: 2006 (E), ISO 140-6-2006, AS ISO 717.2-2004, ASTM E989-89

Test Date: 16/07/2019

Construction: Bare 150mm Concrete Slab

Layer of **REGUPOL everroll composite** rubber floor 14mm, 4mm thick **REGUPOL everroll** rubber flooring; bonded to; 10mm thick **REGUPOL sonus core 10-S** acoustic underlay; bonded to 150mm concrete slab (no ceiling).

**Sample was bonded to the concrete slab. Floor size 3.6m x 3.0m (10.8m²)*



Bare 150mm Concrete Slab

**Layer of REGUPOL everroll composite floor 14mm,
4mm thick REGUPOL everroll rubber flooring; bonded to
10mm thick REGUPOL sonus core 10-S acoustic underlay
bonded to 150mm Concrete Slab**

L_{n,w} 82 dB

L_{n,w} 51 dB

IIC 25

IIC 57

Improvement ΔL_w

Improvement ΔL_w 25dB

ΔL_w as defined by AS ISO 717.2.2004 Using reference floor L_w 78.

Disclaimer

This Acoustic Test is provided "as is" without any representations or guarantees, express or implied. REGUPOL Australia Pty. Ltd. ("REGUPOL") makes no representations or guarantees in relation to this Acoustic Test or the information and materials provided herein. The information and data collected herein are based on industry accepted testing methods. It is intended as descriptive of the performance characteristics and capabilities of REGUPOL[®] acoustic underlays and does not certify applicability for any particular or specific project. Although we make a reasonable effort to include accurate and up to date information, without prejudice to the generality of this paragraph, REGUPOL does not guarantee or warrant that the information in this Acoustic Test is complete, true, accurate or non-misleading. This Acoustic Test is provided solely for informational purposes. You should not act upon information without consulting REGUPOL, a subsidiary or an appropriate professional Acoustical Consultant