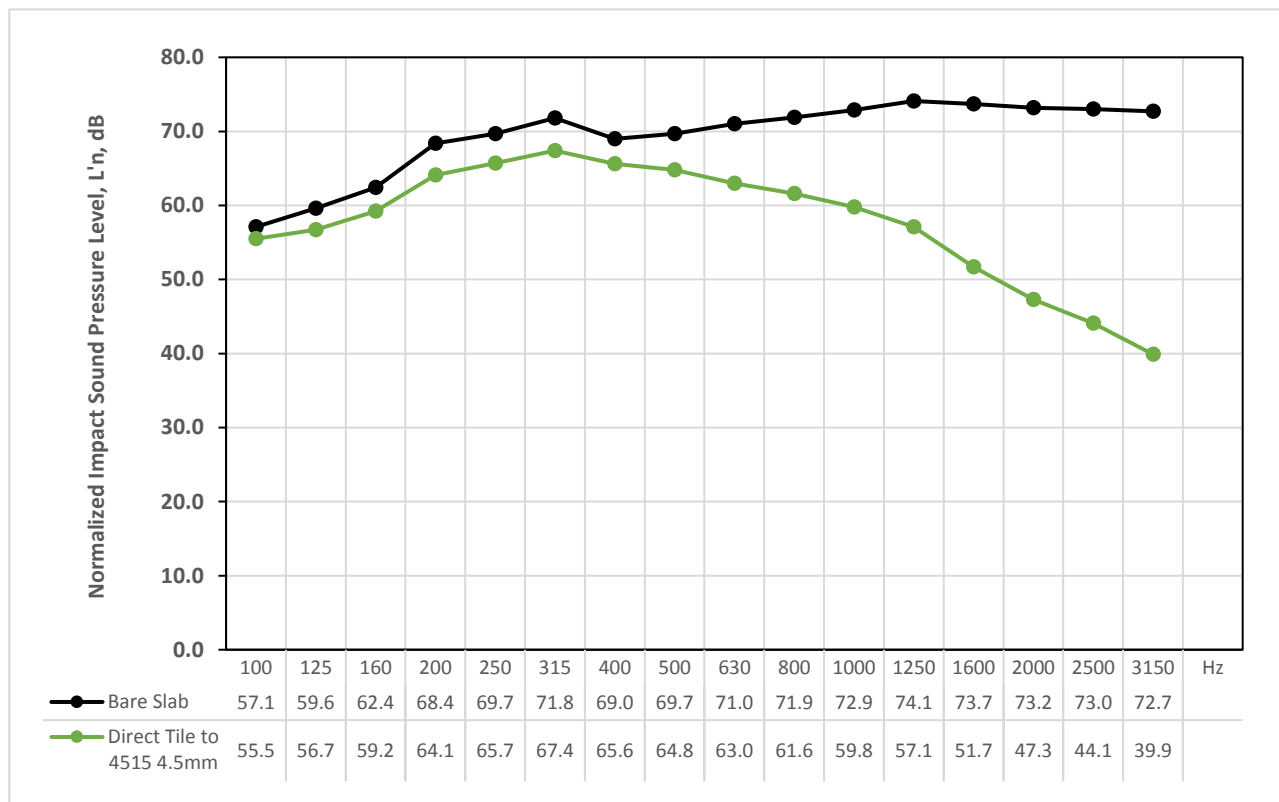


ACOUSTIC TEST

Direct Tile Normalized Impact Sound Pressure Levels Bare Slab and Regupol® 4515 4.5mm Acoustic Underlay

Lab Test: CSIRO INR153 – Test Floor (b)
Test Date: 30/08/2006
Construction: Bare 150mm Concrete Slab
 Layer of 10mm Porcelain Tile, to Regupol® 4515 4.5mm, to 150mm Concrete Slab

* Sample was bonded together and fixed to the concrete slab. Floor size 11.9m²



Results	Improvement	IIC	BCA Compliance	AAAC Star Rating
Bare 150mm Concrete Slab				
$L_{n,w} (C_i) = 79 (-11) \text{ dB}$		IIC 27		
Layer of 10mm Porcelain Tile, to Regupol® 4515 4.5mm, to 150mm Concrete Slab				
$L_{n,w} (C_i) = 61 (-2) \text{ dB}$	Improvement Δ 17dB	IIC 49	Yes	2 Star

Disclaimer

This Acoustic Test is provided "as is" without any representations or guarantees, express or implied. Regupol (Australia) Pty Ltd ("Regupol") makes no representations or guarantees in relation to this Acoustic Test or the information and materials provided herein. The information and data collected herein are based on industry accepted testing methods. It is intended as descriptive of the performance characteristics and capabilities of Regupol® acoustic underlays and does not certify applicability for any particular or specific project. Although we make a reasonable effort to include accurate and up to date information, without prejudice to the generality of this paragraph, Regupol does not guarantee or warrant that the information in this Acoustic Test is complete, true, accurate or non-misleading. This Acoustic Test is provided solely for informational purposes. You should not act upon information without consulting Regupol, a subsidiary or an appropriate professional Acoustical Consultant.