

# ACOUSTIC FLOORING SOLUTIONS

## CAPABILITY STATEMENT

Multi Living  
Gym & Fitness  
Mixed Use Commercial & Retail



---

# CREATING PLACES AND COMMUNITIES WHERE PEOPLE WANT TO BE

With increasing demand for projects combining residential, commercial and community uses, how do we create precincts that deliver quality living spaces alongside commercial and community amenity?

Creating complex, multi living and mixed use developments means designing spaces in a way that actively supports the wellbeing of those who interact within them, whether they be residents, workers or the surrounding communities.

The quality of the spaces created to achieve this can be significantly enhanced with the acoustic concept.



# BUILD ON A TRADITION OF SUSTAINABILITY

## A leader and innovator

When it comes to premium noise and vibration solutions, REGUPOL is a global leader, with a proud 35-year history serving the needs of Australian architects, engineers and builders. We offer a range of premium noise mitigation solutions that set industry standards, and we back our products with passionate customer support that delivers the best outcomes for our partners.

**65+**  
YEARS OF  
INNOVATION

**750+**  
DEDICATED  
AND SKILLED  
EMPLOYEES

  
MADE WITH  
RECYCLED  
MATERIALS

## A long and successful history

We're proud of our long 35-year history in Australia. Globally, we can trace our roots even further to the 1960s, when the founder of REGUPOL, REGUPOL Germany, envisioned creating unrivalled sound mitigation products designed and manufactured from recycled materials. This set our course to become one of the world's leading recycled rubber products brands.

## Customer solutions

Increasingly, customers are seeking products that are more than just functional and of a high standard – they want a range that can solve their problems, enhance their lives and align with their values. That's why REGUPOL constantly innovates and improves its product line-up, support and processes not only to meet customers' functionality needs, but to contribute to a greener and brighter future.

## Diverse range

Our flooring solutions are suitable for many industries and applications, including for the fitness and sports sectors, as well as for transport and construction, through our impact sound insulation and vibration isolation product lines.

Whatever the industry or location, we pride ourselves on working closely with our clients to deliver tailored solutions for their projects.

## An environmental focus



The popularity of noise and vibration products manufactured from sustainable materials is growing, as more industries and consumers seek eco-friendly materials to reduce noise pollution and enhance acoustic comfort.

Along with meeting social responsibility objectives, sustainable materials offer several advantages over conventional ones, such as a lower carbon footprint, higher recyclability and price benefits, meaning there's never been a better time to leverage the REGUPOL range.

Our collaborative approach with customers, a philosophy of constant improvement and strong environmental responsibility, motivates us to continue developing innovative sound suppression products that are easy to use, cost-effective and of the highest standards.

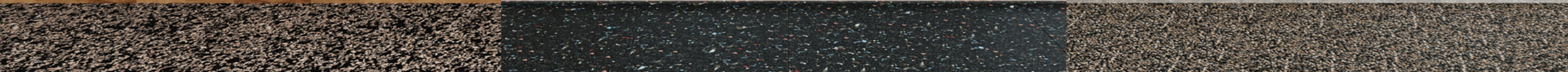
## Need help writing a specification?



The **REGUPOL everroll** and **REGUPOL sonus** range of acoustic underlays is installed under various floor coverings and standards.

To simplify the specification process, the following NATSPEC branded worksections are available:

**0651p** REGUPOL (resilient finishes) and **0473p** REGUPOL (acoustic floor underlays).





# ENABLING MIXED EXPERIENCE DEVELOPMENTS

## Multi Living Residential Flooring

**REGUPOL sonus**  
Extensive range of impact sound insulation for screeds and various floor coverings.

## Gym & Fitness

**REGUPOL everroll and sonusfit**  
Highly efficient fitness studio soundproofing solutions incorporating sports-specific functional characteristics.

## Mixed Use Commercial & Retail

**REGUPOL sound**  
High performing, high impact elastomer-based impact sound insulation for various types of floor build-ups.

## Pool & Aquatic

**REGUPOL or REGUFOAM vibration**  
Effective vibration isolation and structure-borne sound decoupling. For an overview of our solutions, please contact us.

---

# MULTI LIVING FLOORING APPLICATIONS

---

Resilient flooring

Timber over plywood

Engineered timber

Tile

Parquetry

Screeds

Laminate

---



# MULTI LIVING SOLUTIONS

## Acoustic flooring solutions for multi living

As mixed use buildings have both residential and commercial tenants, reducing the impact of noise and vibration between neighbours is crucial. It is important to plan carefully and use advanced solutions to control noise and vibrations.

The **REGUPOL sonus range** provides effective solutions to improve sound levels, making sure residents can coexist harmoniously.



Sustainable materials



Solutions to help achieve building certifications



Suitable for a variety of floor finishes



### REGUPOL SONUS RANGE

#### SONUS MULTI 4.5

##### All rounder for impact sound isolation

A sustainable solution made from pre-consumer polyurethane foam and cork.

4.5mm thickness

Impact sound improvement:  
 $\Delta L_w \geq 17-19\text{dB}$

- ✔ Compatible with most types of floor finishes, frequently used under tiles
- ✔ Lightweight for easy install
- ✔ A 3mm variant is also available for resilient floor finishes

#### SONUS ECO 5

##### Best of both worlds with rubber and cork

An effective acoustic barrier to install parquetry and timber floors directly to the surface finish.

5mm thickness

Impact sound improvement:  
 $\Delta L_w \geq 16-20\text{dB}$

- ✔ Premium solution
- ✔ Made from recycled rubber and cork
- ✔ Natural cork recovery
- ✔ Excellent adhesion

#### SONUS CORE 5

##### The go-to, cost-efficient solution

One of our most sustainable solutions, made of recycled rubber granules.

5mm thickness

Impact sound improvement:  
 $\Delta L_w \geq 18-21\text{dB}$

- ✔ Compatible with various types of floor finishes, frequently used under screeds with tiled floors
- ✔ Most popular under engineered timber flooring and laminates
- ✔ Excellent value for money

#### SONUS CORE 10-S

##### High versatility and performance under screed

Popular mid-range performer under bonded screed beds and commercial screeds.

10mm thickness

Impact sound improvement:  
 $\Delta L_w \geq 18-23\text{dB}$

- ✔ Post-consumer end of life tyres
- ✔ Excellent acoustic performance across a long service life
- ✔ Acoustic systems available for CLT wooden slabs

#### SONUS CURVE 8

##### For high loads and critical acoustic performance

The curve profile provides effective impact sound performance within low construction flooring build-ups.

8mm thickness

Impact sound improvement:  
 $\Delta L_w \geq 18-26\text{dB}$

- ✔ Post-consumer end of life tyres
- ✔ A popular choice under balcony screeds with tiles
- ✔ Also suitable as a custom build-up under plywood and cement sheeting

#### SONUS CURVE 17

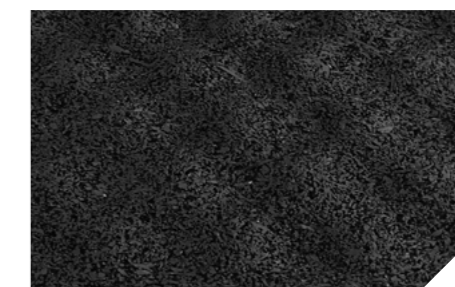
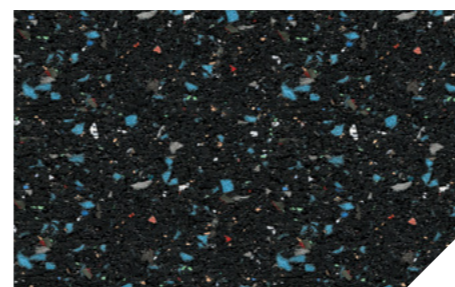
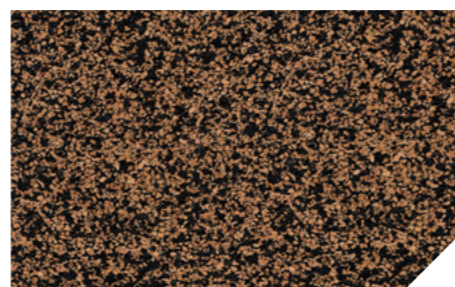
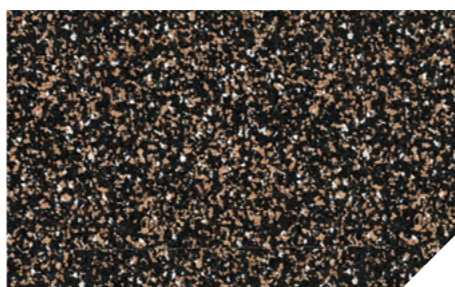
##### The highest performing solution

The highest performing system under timber floors (with plywood separation).

17mm thickness

Impact sound improvement:  
 $\Delta L_w \geq 27\text{dB}$

- ✔ Post-consumer end of life tyres
- ✔ Premium, high insulation requirements
- ✔ 3D dimple profile effectively reduces impact sound



Note: All applications should be checked for suitability with the selected floor finish, REGUPOL adhesives and accessories prior to use.

# GYM & FITNESS ACOUSTIC FLOORING



Suitable for both  
refurbishments  
and new builds



Reduce impact  
and vibration  
sound



Ensure  
peaceful  
coexistence



# GYM & FITNESS ACOUSTIC FLOORING

Achieve high performance acoustic and vibration outcomes

Gyms are fast becoming an integral part of the mixed use building fabric. Ensuring a peaceful coexistence with other areas of the building requires good planning and effective acoustic and vibration solutions.

Particular consideration should be given to impacts from aerobics, weights and other associated equipment, which can be particularly complex challenges to solve. REGUPOL offers a range of solutions to achieve various sound level improvements whilst maintaining the sport functional properties.

## REGUPOL SONUSFIT SYSTEM

### REGUPOL EVERROLL - RUBBER WEAR LAYER

#### EVERROLL

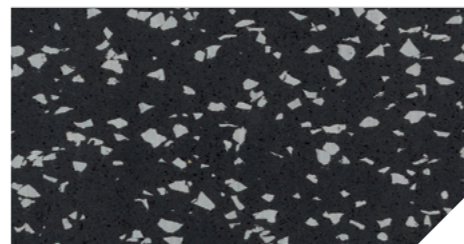
**Proven and robust rubber flooring for all fitness areas**

A versatile and durable option for any space. It can be used on its own, or combined with the sonusfit range to create a customised acoustic solution.

8mm thickness | 12mm thickness

Impact sound improvement:  
 $\Delta Lw \geq 17dB$  - 8mm thickness  
 $\Delta Lw \geq 19dB$  - 12mm thickness

- ✔ Provides an adequate level of impact sound isolation for low-impact areas in gyms
- ✔ Excellent resistance to wear and tear, making it ideal for all gym areas and end-of-trip facilities
- ✔ Various colour combinations available



See online for the full colour selection chart

#### EVERROLL IMPACT

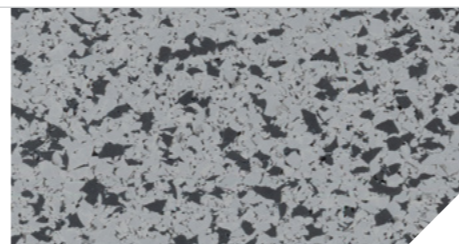
**Wear layer with added comfort and acoustic benefits**

A multi-layer system comprised of 10mm sonus core 10-S acoustic underlay with 8mm everroll rubber flooring in various colour choices.

8mm thickness

Impact sound improvement:  
 $\Delta Lw \geq 21dB$  - 18mm thickness

- ✔ Designed to minimise the noise of low-impact exercises and provide a comfortable surface for any kind of workout
- ✔ Durable, resilient and easy to maintain
- ✔ Perfect for group fitness and cardio spaces



See online for the full colour selection chart

### REGUPOL SONUSFIT - ACOUSTIC FLOORING SYSTEM

#### SONUSFIT m-517

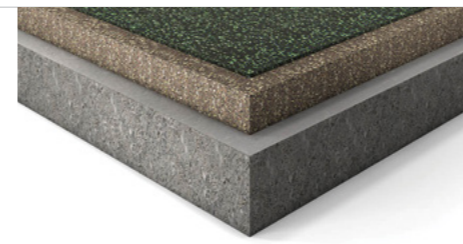
**Cost-effective, recycled elastomers**

A multi-layer system available in either a single layer 40mm or dual layer 80mm thick acoustic underlay with 8mm everroll rubber flooring in various colour choices.

48mm thickness | 88mm thickness

Impact sound improvement:  
 $\Delta Lw \geq 28dB$  - 48mm thickness  
 $\Delta Lw \geq 29dB$  - 88mm thickness

- ✔ Developed to achieve a maximum of structure-borne noise reduction while fulfilling the high requirements of sports functionality
- ✔ A proven surface system for the fitness sector



#### SONUSFIT m-513

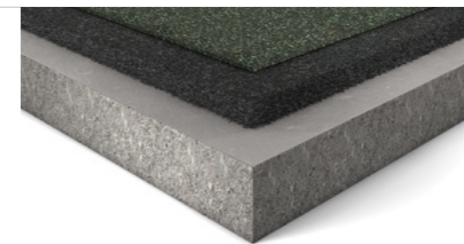
**Near seamless look, 100% rubber**

A multi-layer system comprised of either a 50mm or a 75mm thick acoustic underlay with 8mm everroll rubber flooring in various colour choices.

58mm thickness | 83mm thickness

Impact sound improvement:  
 $\Delta Lw \geq 27dB$  - 58mm thickness  
 $\Delta Lw \geq 30dB$  - 83mm thickness

- ✔ Strong performance in weight training areas
- ✔ Combines elastomers with different shock-absorbing properties to provide effective noise and vibration insulation
- ✔ Used in both refurbished and newly built fitness studios and mixed-use contexts



#### SONUSFIT C-series

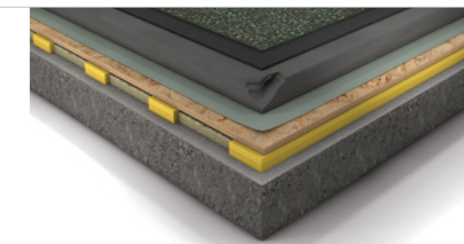
**Highest performing, custom system with REGUPOL / REGUFOAM vibration**

Custom floor system solutions to match the desired target frequency, paired with the most effective performing everroll rubber flooring surface.

Various thicknesses

Impact sound improvement:  
 Site specific calculations

- ✔ Maximum flexibility regarding the acoustical design of floor construction
- ✔ A very effective method of isolating low-frequency excitation in gyms
- ✔ A tailored and flexible design for various sound protection levels





# MIXED USE COMMERCIAL & RETAIL

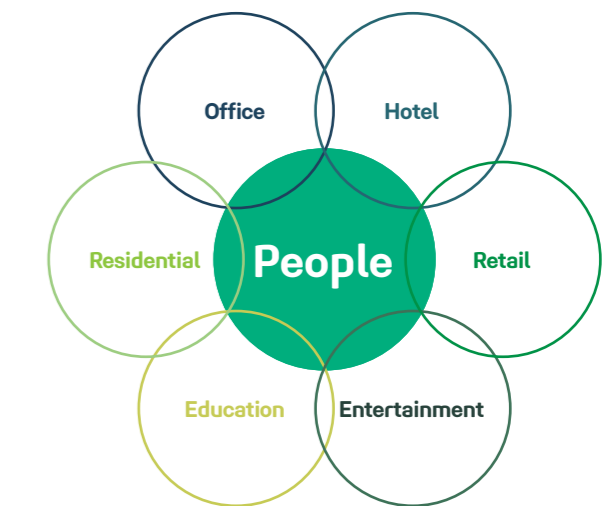
Building communities that are made for living together

The expectations are changing, new destinations will deliver exciting new retail, campus-style commercial spaces, residential, social housing, student housing and community facilities. Accessible, green public domains will all be integrated to create an equitable user experience.



# GROWING MOMENTUM ENABLING A SHIFT FROM MIXED USE TO MIXED EXPERIENCE

A key enabler of this movement will be the ability to look beyond mere material products in isolation. It requires new ways of solving complex challenges, and adopting concepts and solutions that will enable these diverse applications to exist side by side in harmony. Leveraging innovative acoustic concepts and solutions will meld together these dynamic and complex places.



# MIXED USE COMMERCIAL & RETAIL

## High performing, high impact flooring applications

Effectively reduce the low-frequency structure-borne sound and rolling noise generated by activities such as shopping trolleys and forklifts.

Applications include:

- Supermarket trading floors and back-of-house loading docks
- Cinemas and entertainment complexes
- Commercial kitchens and restaurants
- Rooftops, bars, nightclubs



Distinctive 3D  
dimple profile



Proof of performance  
with European  
Technical Assessment

## REGUPOL SOUND RANGE

### SOUND 47

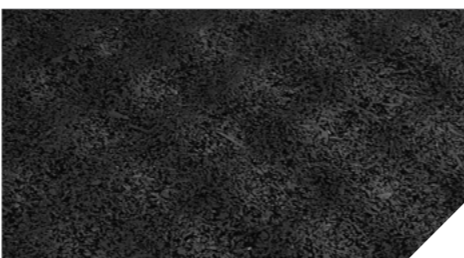
#### The most cost-effective option

A unique solution for spaces that need both a sleek design and a high level of sound absorption.

8mm thickness

Impact sound improvement:  
 $\Delta L_w \geq 23\text{dB}$   
Tested under cement screed: 70mm

- ✓ Made from recycled elastomer materials to a specific density, thickness and 3D profile
- ✓ Installed under concrete and engineered screeds
- ✓ Suitable for indoor and outdoor installations in wet and dry conditions
- ✓ Max traffic load-bearing capacity 30 kN/ m<sup>2</sup>
- ✓ Mean dynamic stiffness of  $\leq 30 \text{ MN/m}^3$



### SOUND 17

#### Higher moisture resistance, and suitable for high loads

A long-established and reliable variant for use under heavy-duty floor structures.

17mm thickness

Impact sound improvement:  
 $\Delta L_w \geq 26\text{dB}$  (1 layer - 17mm)  
 $\Delta L_w \geq 30\text{dB}$  (2 layers - 34mm)  
Tested under cement screed: 120mm

- ✓ Made from recycled elastomer materials to a specific density, thickness and 3D profile
- ✓ Ideal for internal and external use
- ✓ Installed under reinforced concrete topping slabs for high rolling and trafficable loads
- ✓ Max traffic load-bearing capacity 50 kN/ m<sup>2</sup>
- ✓ Mean dynamic stiffness of  $\leq 19 \text{ MN/m}^3$  1 layer
- ✓ Mean dynamic stiffness of  $\leq 9 \text{ MN/m}^3$  2 layers



### SOUND 15

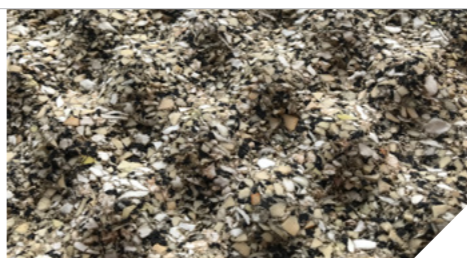
#### An all-rounder suitable for limited floor heights

This product offers high acoustic values and is ideal for floor constructions that require a low construction height.

12mm thickness

Impact sound improvement:  
 $\Delta L_w \geq 30\text{dB}$   
Tested under cement screed: 85mm

- ✓ Made from PU-bound recycled elastomer materials to a specific density, thickness and 3D profile
- ✓ Installed under concrete and engineered screeds
- ✓ A versatile and cost-effective option
- ✓ Suitable for indoor use
- ✓ Max traffic load-bearing capacity 30 kN/ m<sup>2</sup>
- ✓ Low dynamic stiffness of  $\leq 6 \text{ MN/m}^3$



### SOUND 12

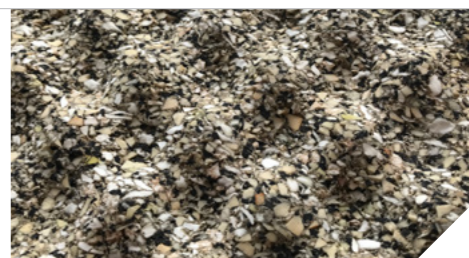
#### The most efficient variant

Can be installed in one or two layers, combining the highest acoustic requirements with outstanding value for money.

17mm thickness

Impact sound improvement:  
 $\Delta L_w \geq 31\text{dB}$  (1 layer - 17mm)  
 $\Delta L_w \geq 36\text{dB}$  (2 layers - 34mm)  
Tested under cement screed: 90mm

- ✓ Made from PU-bound recycled elastomer materials to a specific density, thickness and 3D profile
- ✓ Installed under reinforced concrete topping slabs for high rolling and trafficable loads
- ✓ Suitable for indoor use
- ✓ Max traffic load-bearing capacity 30 kN/ m<sup>2</sup>
- ✓ Low dynamic stiffness of  $\leq 6 \text{ MN/m}^3$  1 layer
- ✓ Low dynamic stiffness of  $\leq 4 \text{ MN/m}^3$  2 layer



### SOUND 10

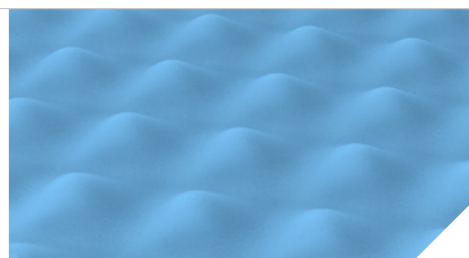
#### The technically most effective variant

This 17mm underlay is specially designed to meet the highest acoustic demands, reducing noise transmission and enhancing sound quality.

17mm thickness

Impact sound improvement:  
 $\Delta L_w \geq 34\text{dB}$   
Tested under cement screed: 95mm

- ✓ Made from PU-bound recycled elastomer materials to a specific density, thickness and 3D profile
- ✓ Installed under reinforced concrete topping slabs for high rolling and trafficable loads
- ✓ Suitable for indoor use
- ✓ Max traffic load-bearing capacity 25 kN/ m<sup>2</sup>
- ✓ Low dynamic stiffness of  $\leq 6 \text{ MN/m}^3$





**REGUPOL Australia Pty. Ltd.**

155 Smeaton Grange Road

Smeaton Grange NSW 2567

Phone +61 2 4624 0050

[acousticsales@regupol.com.au](mailto:acousticsales@regupol.com.au)

**REGUPOL Germany GmbH & Co. KG**

**REGUPOL America LLC**

**REGUPOL Acoustics Middle East FZE**

**REGUPOL Schweiz AG**

**REGUPOL Zebra Athletics LLC**

**BSW Shanghai CO. LTD.**

[www.regupol.com.au](http://www.regupol.com.au)