

SOUNDPROOFING TIMBER FLOOR COVERINGS



Quality of life thanks
to REGUPOL impact
sound insulation and
vibration isolation



HOW CAN WE CREATE A HOME IN THE HEART OF THE CITY? TOGETHER.

Inner-city living can provide a vibrant and exciting lifestyle, not just for singles and couples, but also for whole families. Our living habits are evolving in conjunction with the way we work, rest and play. A growing number of people are recognising the benefits of living in the heart of the city, but they are seeking truly liveable homes, not just accommodation. A functional dwelling becomes a home when it is comfortable, quiet, environmentally sustainable and representative of its occupants' personal tastes.

Therein lies the challenge for developments situated within inner-city locales: high-density living co-locates residents, businesses, transport networks and recreation areas within limited confines. This close physical proximity presents challenges associated with noise, especially impact sound transference within and between properties.

The challenge of noise is exacerbated by the fact that hard flooring surfaces are often preferred by inner-city residents who seek a low-maintenance lifestyle. The style and elegance of hard flooring surfaces tend to complement the contemporary aesthetics of many inner-city abodes. Importantly, hard floor surfaces are easy to clean! Unfortunately, footfall noise is more pronounced on hard surfaces than on soft, unless acoustics are handled appropriately. Not only do hard surfaces have the potential to increase noise levels directly inside individual homes, they also have the potential to cause greater disturbance between connected properties.

Those who embrace a more connected lifestyle still value privacy and tranquility and don't necessarily want to be privy to their neighbours' daily activities. Likewise, occupants don't want their own footfall noise to be an annoyance as they navigate the home environment.

OUR UNPARALLELED ENVIRONMENTAL STANDARDS

In the dynamic and complex area of building acoustics, we understand that your choices play a pivotal role in shaping the future of spaces where people live, work, and connect.

At **REGUPOL**, we share your commitment to creating environments that not only meet high-quality standards but also contribute to sustainable and vibrant communities.

However, not all acoustic flooring products are created equal. **REGUPOL** stands as the only acoustic flooring manufacturer with:

- An Environmental Product Declaration (EPD)
- GECA (Good Environmental Choice Australia) certification
- Cradle to Cradle certification

This unique combination reflects our dedication to environmental and social responsibility, providing you with acoustic flooring solutions that strive to lift conventional industry standards.

We think long term

Developing socially responsible, sustainable solutions is part of **REGUPOL's** core mission. Our collaborative approach with customers, a philosophy of constant improvement and strong environmental responsibility, motivates us to continue developing innovative sound suppression products that are easy to use, cost-effective and of the highest standards.

How sustainable are REGUPOL products?

The circular economy works when recycled products compete directly with newly created products from raw materials – and we have been proving this for over 65 years. **REGUPOL** products are typically made from 75% to 95% recycled materials, with a selection of application-specific products made from raw materials.

OUR ACCREDITATIONS



GECA

As Australia's leading environmental certification program, certification with the GECA ecolabel indicates that the environmental performance of a product has been certified from a multicriteria perspective, and are verified

as environmentally preferable by GECA. Our certified products attribute to many green building programs including Green Building Council of Australia (GBCA) Green Star program (Level A), WELL Building certification and ISCA's IS program.



NATSPEC

As the preferred specification system for building professionals, NATSPEC branded worksections are endorsed by Government departments, contractors, consultants and architects alike. We are

proud to be a NATSPEC Product Partner, offering a national specification for our ranges of acoustic floor underlays. This will assist you in specifying REGUPOL acoustic underlays with various floor finishes on your project.



CRADLE TO CRADLE CERTIFIED®

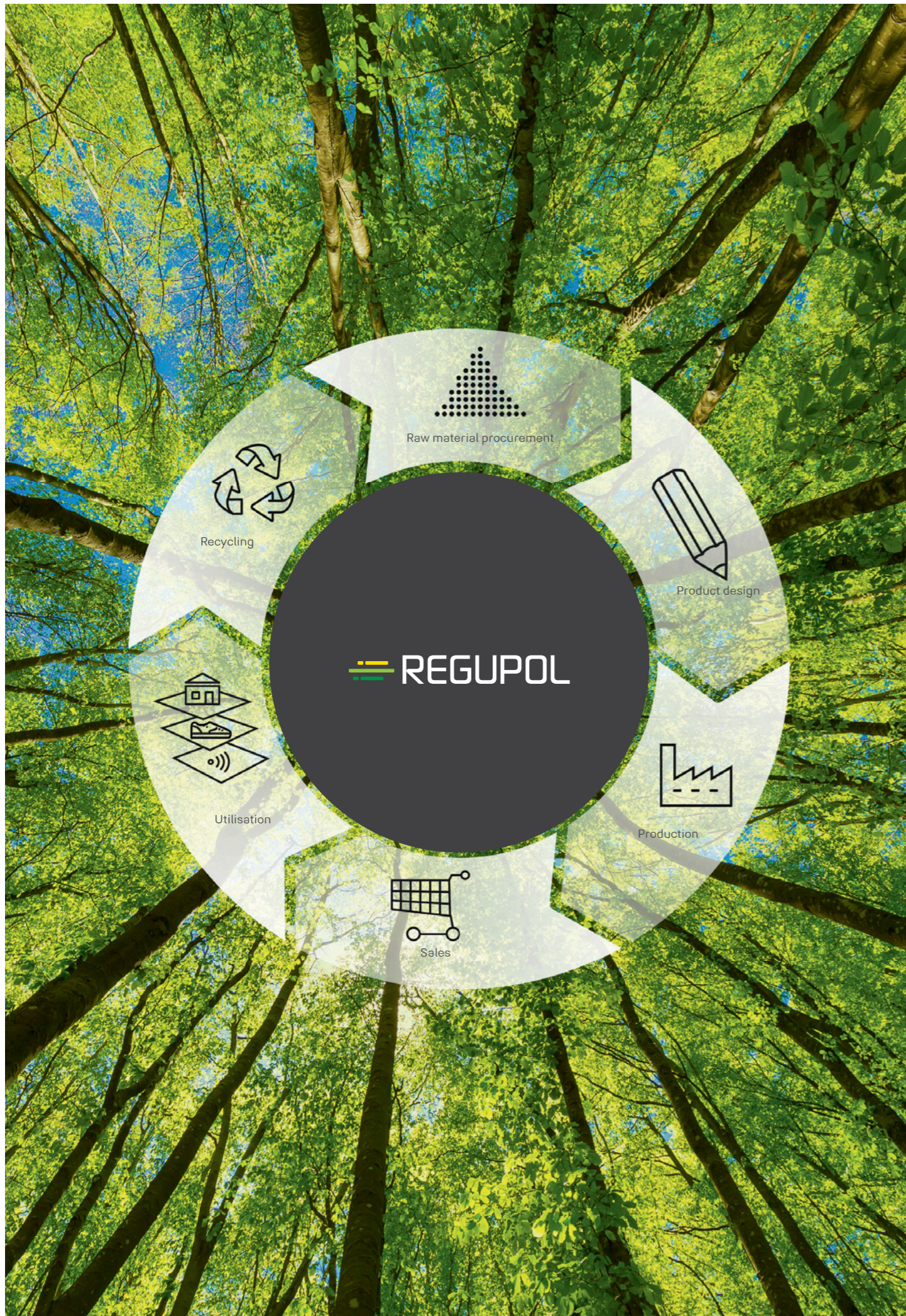
REGUPOL has successfully achieved Cradle to Cradle Certified® Bronze for Acoustics, Construction and Load Securing. The Cradle to Cradle Certified®

products program provides the framework to assess the safety, circularity and responsibility of materials and products across five categories of sustainability performance: Material Health, Product Circularity, Clean Air & Climate Protection, Water & Soil Stewardship and Social Fairness. Cradle to Cradle Certified® is a registered trademark of the Cradle to Cradle Products Innovation Institute.



INITIATIVE NEW LIFE

As a founding member of the Initiative New Life, REGUPOL is committed to an optimal recycling economy. Jointly, the members aim to showcase the advantages of recycling products from ELT (End-of-Life Tires) and motivate more sustainable choices. Find out more at www.initiative-new-life.de/en/



KEY TOPICS AT A GLANCE



14



10



18



22



26



30



34

11 REGUPOL sonus multi 4.5
ALL ROUNDER FOR IMPACT SOUND ISOLATION

15 REGUPOL sonus eco 5
BEST OF BOTH WORLDS WITH RUBBER AND CORK

19 REGUPOL sonus core 5
THE GO-TO, COST EFFICIENT SOLUTION

23 REGUPOL sonus core 10-S
HIGH VERSATILITY AND PERFORMANCE

27 REGUPOL sonus curve 6
VALUE ENGINEERED FOR LONG TERM PERFORMANCE

31 REGUPOL sonus curve 8
A SOUND CHOICE FOR HIGH PERFORMANCE

35 REGUPOL sonus curve 17
THE HIGHEST PERFORMING SOLUTION



REGUPOL SONUS

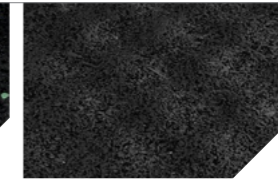
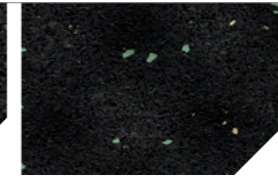
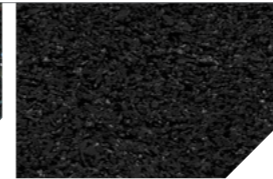
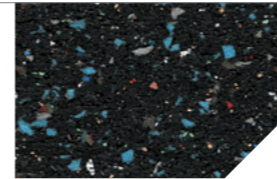
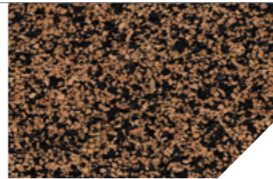
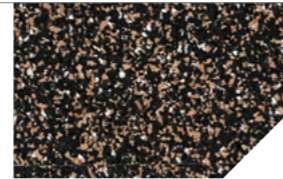
Our products with various timber floors are tested as follows and our acoustic performance is based on bare slab results only.

Existing buildings working under Strata Bylaws might include Ln,w, LnT,w, IIC, FIIC or AAAC Star Ratings performance requirements, all of which can only be verified on-site by testing.

Before installation, all materials should be checked for compatibility and tested for suitability to the prevailing site conditions.

The flooring system installed over the REGUPOL sonus acoustic underlay must be approved by the flooring manufacturer and checked for compatibility and warranty.

The REGUPOL sonus curve range may require plywood between the timber floor and the underlay.



SONUS MULTI 4.5

All rounder for impact sound isolation

A sustainable solution made from preconsumer polyurethane foam and cork.

- ✔ Compatible with most types of floor finishes
- ✔ Lightweight for easy install
- ✔ A 3mm variant available for resilient floor finishes

SONUS ECO 5

Best of both worlds with rubber and cork

An effective acoustic barrier to install parquetry and timber floors directly to the surface finish.

- ✔ Premium solution
- ✔ Made from recycled rubber and cork
- ✔ Natural cork recovery
- ✔ Excellent adhesion

SONUS CORE 5

The go-to, cost efficient solution

One of our most sustainable solutions, made of recycled rubber granules.

- ✔ Most popular under engineered timber flooring and laminates
- ✔ Excellent value for money

SONUS CORE 10-S

High versatility and performance

Popular mid-range performer under bonded screed beds and commercial screeds.

- ✔ Post-consumer end of life tyres
- ✔ Excellent acoustic performance across a long service life
- ✔ Acoustic systems available for CLT wooden slabs

SONUS CURVE 6

Value engineered for long term performance

The thinnest curve version, suitable for constructions with limited floor heights

- ✔ Post-consumer end of life tyres

SONUS CURVE 8

A sound choice for high performance

The curve profile provides effective impact sound performance within low construction flooring build-ups.

- ✔ Post-consumer end of life tyres
- ✔ Also suitable as a custom build-up under plywood and cement sheeting

SONUS CURVE 17

The highest performing solution

The highest performing system under timber floors (with plywood separation).

- ✔ Post-consumer end of life tyres
- ✔ Premium, high insulation requirements
- ✔ 3D dimple profile effectively reduces impact sound

Engineered Timber (14mm) *over 150mm bare slab	ΔLw Improvement dB	ΔLw 17dB	ΔLw 17dB	ΔLw 18dB	ΔLw 18dB	ΔLw 17dB	ΔLw 18dB	
	IIC	50	51	52	50	51	53	
	Thickness	4.5mm	5mm	5mm	10mm	6/3mm dimpled	8/4mm dimpled	
	Lab Result I,nw	60	59	58	58	58	57	
Parquetry (19mm) *over 150mm bare slab	ΔLw Improvement dB		ΔLw 20dB					
	IIC		54					
	Thickness		5mm					
	Lab Result I,nw		56					
Solid Timber (19mm) over Plywood layer (18mm) (sample only) *over 170mm bare slab	ΔLw Improvement dB					ΔLw 23dB		ΔLw 27dB
	IIC					50		55
	Thickness					6/3mm dimpled		17/8mm dimpled
	Lab Result I,nw					57		53
Laminate (8mm) *over 150mm bare slab	ΔLw Improvement dB	ΔLw 19dB	ΔLw 19dB	ΔLw 19dB	ΔLw 20dB			
	IIC	50	50	51	51			
	Thickness	4.5mm	4.5mm	5mm	10mm			
	Lab Result I,nw	60	60	59	58			

ALL ROUNDER FOR IMPACT SOUND ISOLATION



REGUPOL SONUS MULTI 4.5

Suitable for green buildings, the **REGUPOL sonus multi 4.5** is a sustainable product made from pre-consumer polyurethane foam and cork elastomer bound with polyurethane.

laminated, engineered timber and more. All applications should be checked for suitability with the selected floor finish, waterproof membranes, **REGUPOL** adhesives, tile adhesives, grouts etc.

This environmentally preferable product has been independently certified as meeting the requirements of Good Environmental Choice Australia GECA 25-2011 v2.0i - Floor Coverings Standard. See www.geca.eco

REGUPOL sonus multi 4.5 is an acoustic underlay developed for its unique material composition which allows it to be a compatible surface to bond approved floor coverings such as carpet tiles, ceramic tiles, stone, marble,



Available in:

Rolls	1m x 20m
Modular Tiles	1050mm x 500mm
Thickness	4.5mm

ACOUSTICAL PERFORMANCE

ENGINEERED TIMBER Normalised Impact Sound Pressure Levels

Tested at CSIRO Clayton, in accordance with ISO 140-8: 2006 (E), ISO 140-6-2006, AS ISO 717.2-2004, ASTM E989-89. Test area 10.8m². Results can vary when different floors are installed and/or if bonded.

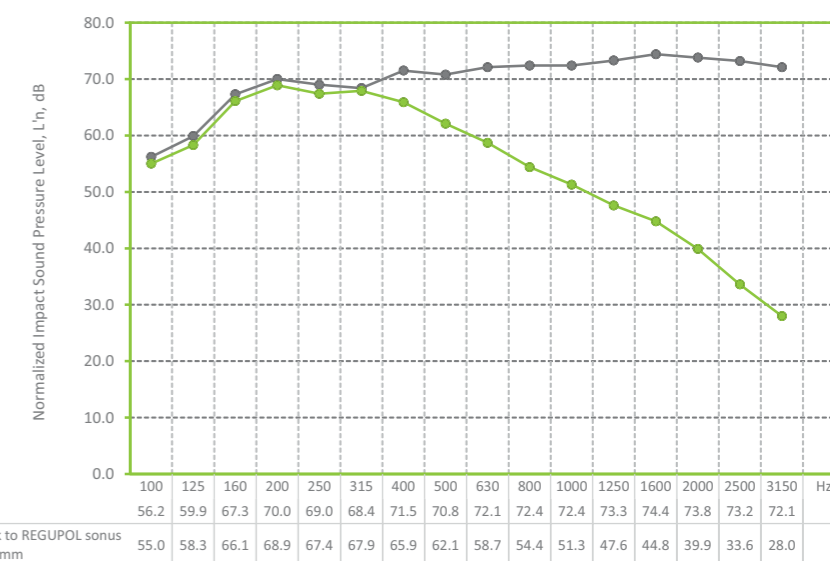
REPORT RG086

Layer of 14mm engineered timber (floating), to **REGUPOL sonus multi 4.5mm**, to 150mm concrete slab (no ceiling).

Ln,w
60dB

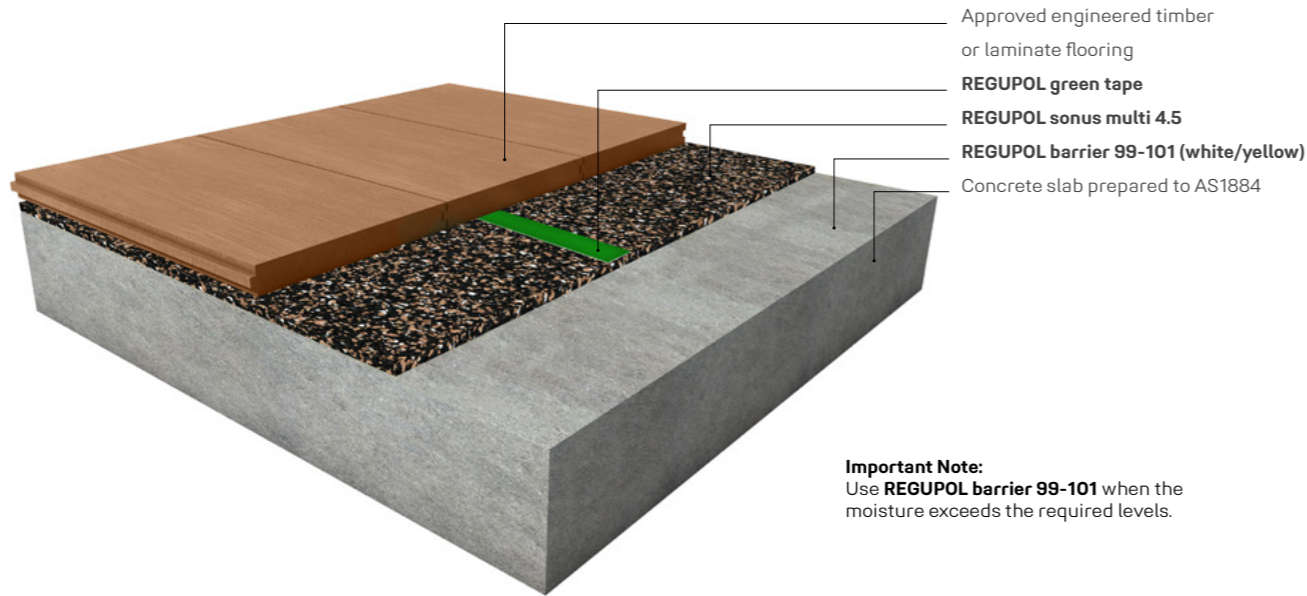
ΔLw
17dB

50
IIC

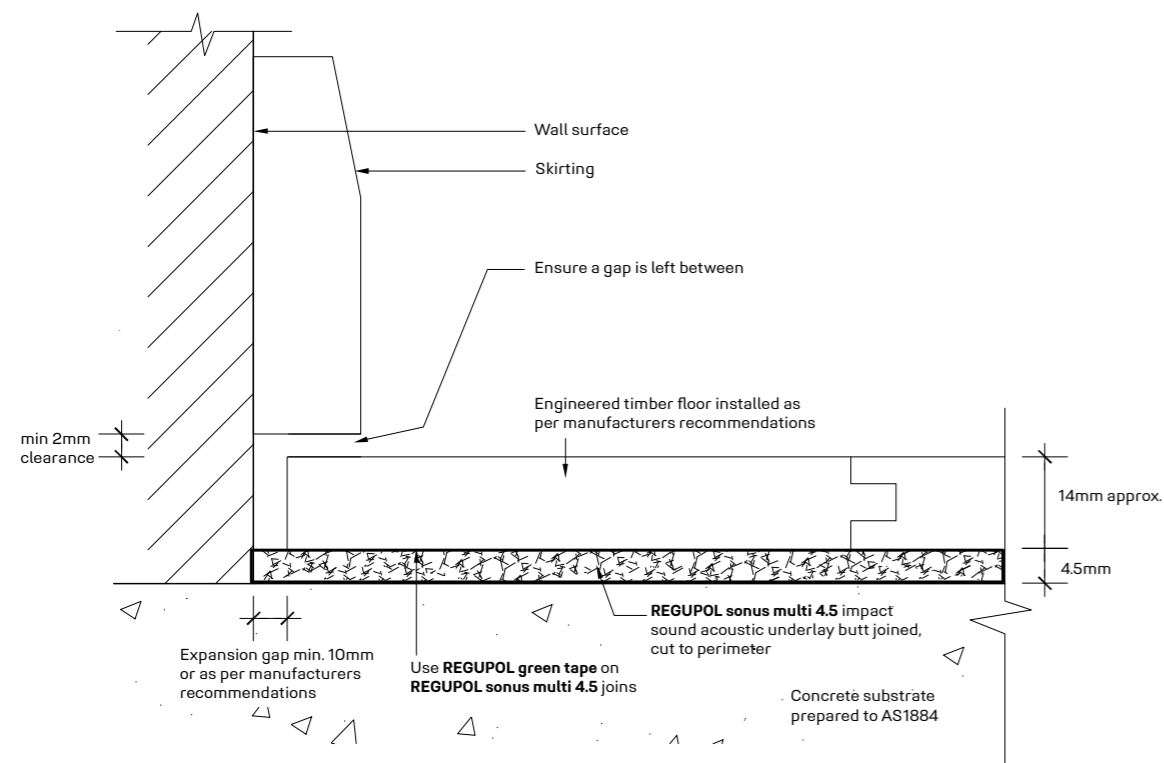


NON-BONDED ENGINEERED TIMBER OR LAMINATE

This **REGUPOL sonus multi 4.5** system reflects a typical residential application with approved engineered timber or laminate floor coverings. For all other applications please contact **REGUPOL** acoustic division. Please note that drawings are not to scale and are for illustration purposes only.

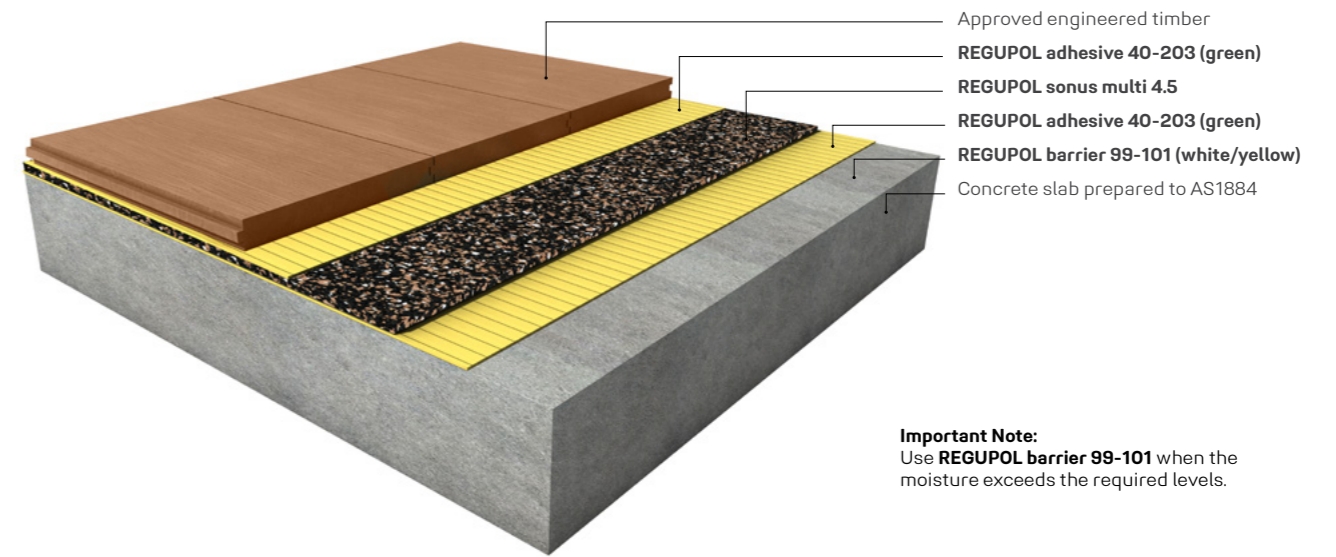


Important Note:
Use **REGUPOL barrier 99-101** when the moisture exceeds the required levels.

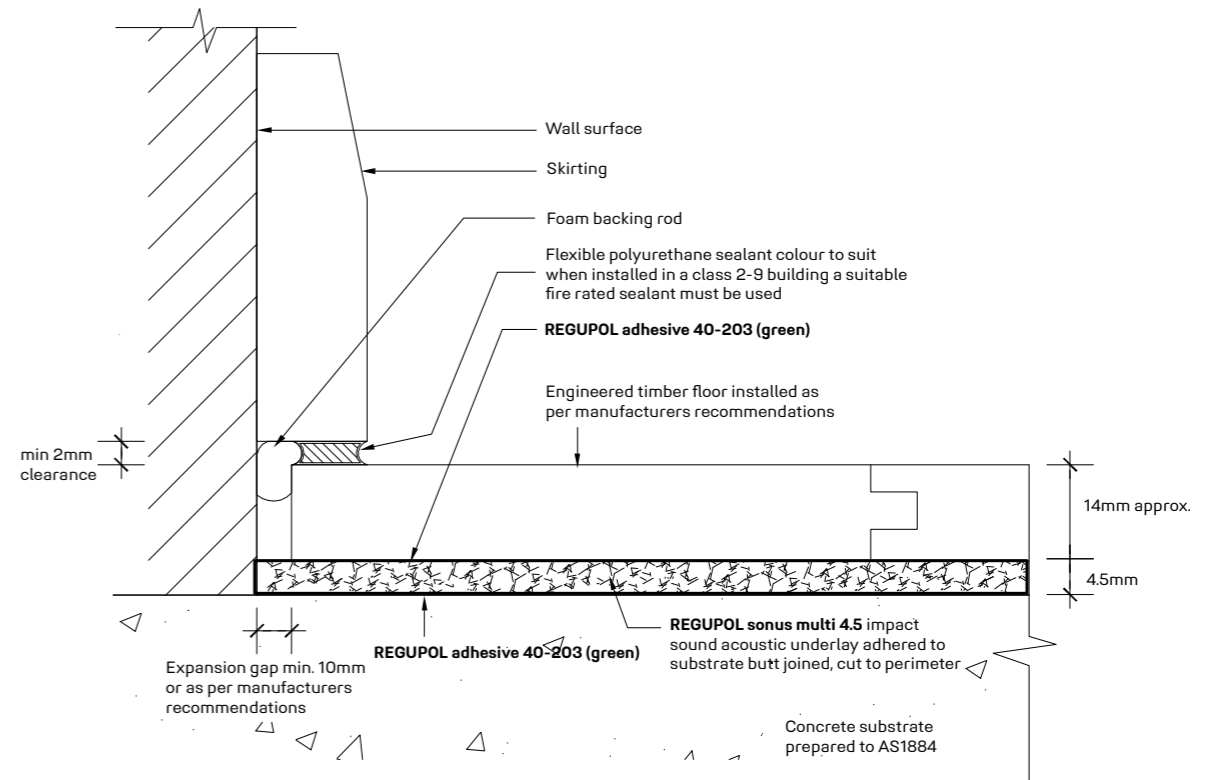


DUAL BOND ENGINEERED TIMBER

This **REGUPOL sonus multi 4.5** system reflects a typical residential application with approved engineered timber floor coverings. For all other applications please contact **REGUPOL** acoustic division. Please note that drawings are not to scale and are for illustration purposes only.



Important Note:
Use **REGUPOL barrier 99-101** when the moisture exceeds the required levels.



BEST OF BOTH WORLDS WITH RUBBER AND CORK



REGUPOL SONUS ECO 5

REGUPOL sonus eco 5 is a high performance acoustic underlay, designed to reduce the transmission of impact sound generated by footfall noise.

Suitable for green buildings, the **REGUPOL sonus eco 5** is a sustainable product made from post-consumer end of life tyre and cork elastomers bound with polyurethane.

This environmentally preferable product has been independently certified as meeting the requirements of Good Environmental Choice Australia GECA 25-2011 v2.0i - Floor Coverings Standard. See www.geca.eco

REGUPOL sonus eco 5 can be installed under approved traditional block parquetry, laminate and engineered timber floors. All applications should be checked for suitability with the selected floor finish, moisture barriers, **REGUPOL** adhesives etc.



Available in:

- Rolls 1m x 20lm
- Modular Tiles 1050mm x 500mm
- Thickness 5mm

ACOUSTICAL PERFORMANCE

PARQUETRY TIMBER Normalised Impact Sound Pressure Levels

Tested at CSIRO Hightett, in accordance with ISO 140-8: 1997 (E), ISO 140-6, AS ISO 717.2-2004, ASTM E989-89. Test area 11.7m². Results can vary when different floors are installed and/or if bonded.

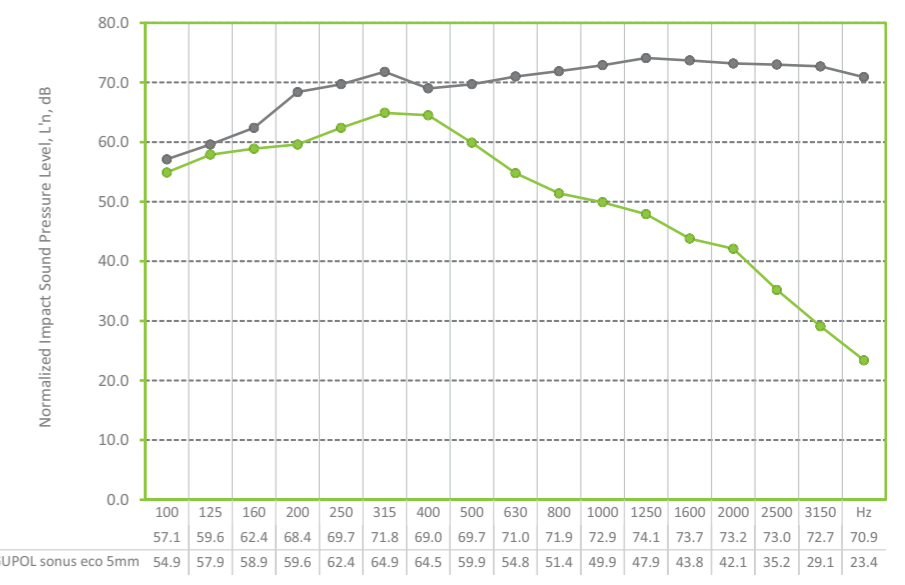
REPORT RG019

Layer of 19mm parquetry, bonded to **REGUPOL sonus eco 5mm**, bonded to 150mm bare concrete slab (no ceiling).

Ln,w
56dB

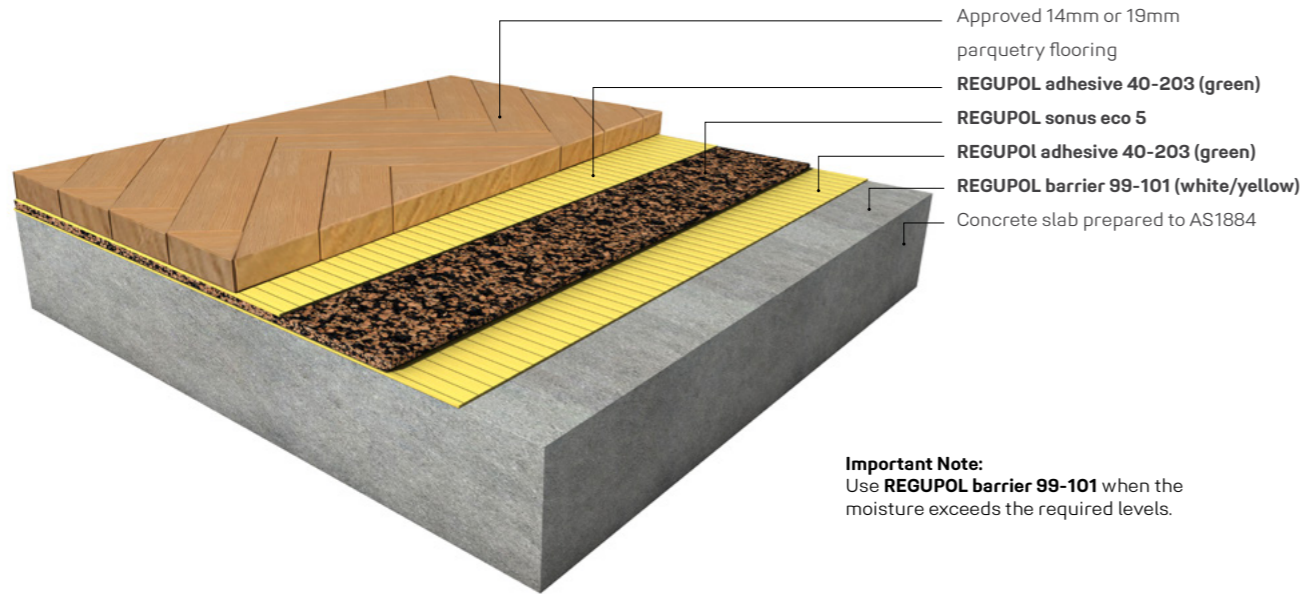
ΔLw
20dB

54
IIC



DUAL BOND PARQUETRY TIMBER

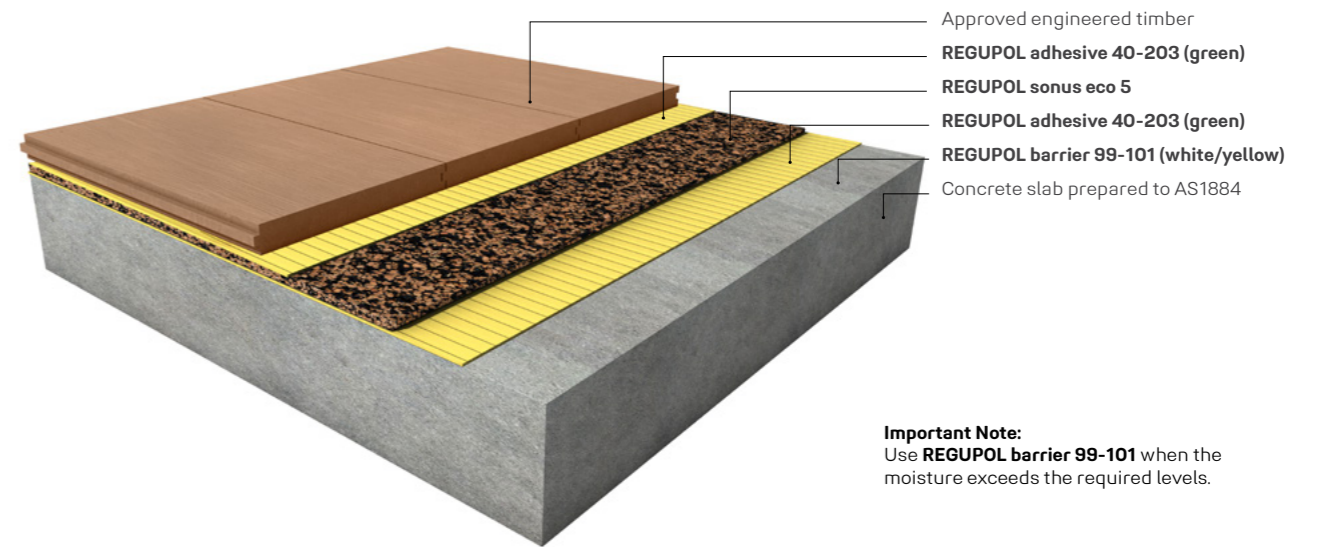
This **REGUPOL sonus eco 5** system reflects a typical residential application with approved parquetry timber floor coverings. For all other applications please contact **REGUPOL** acoustic division. Please note that drawings are not to scale and are for illustration purposes only.



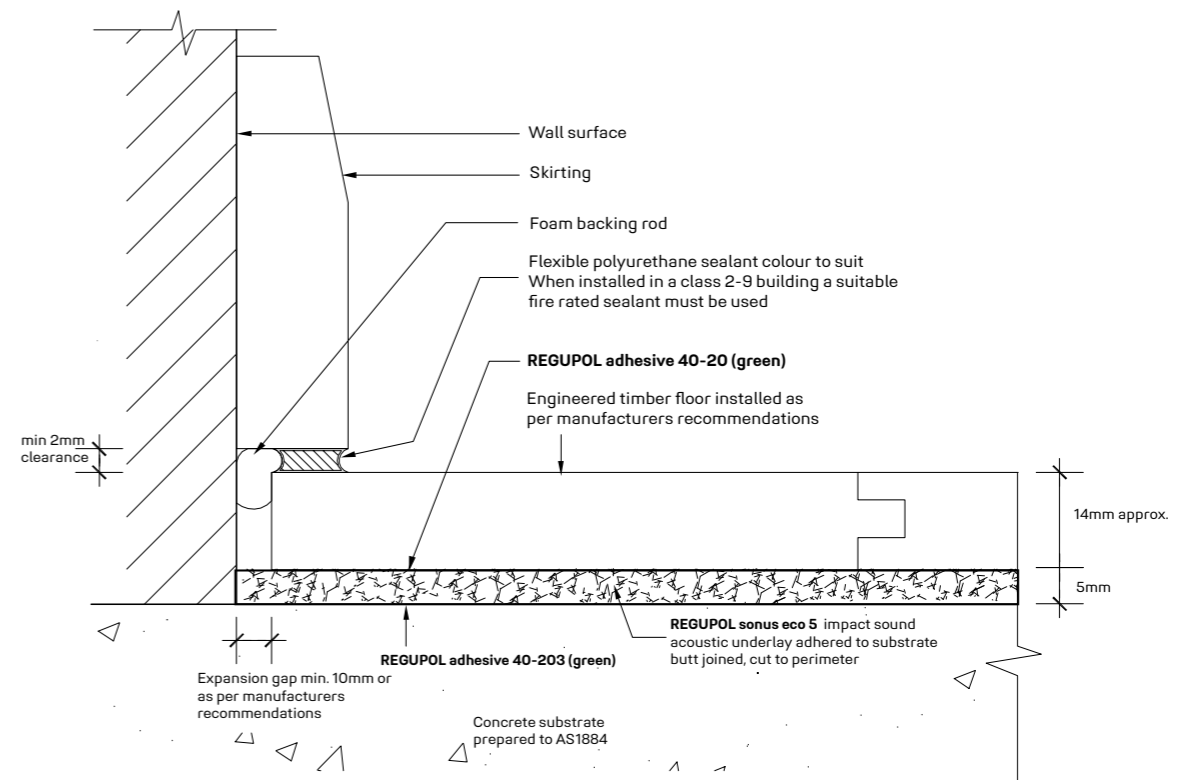
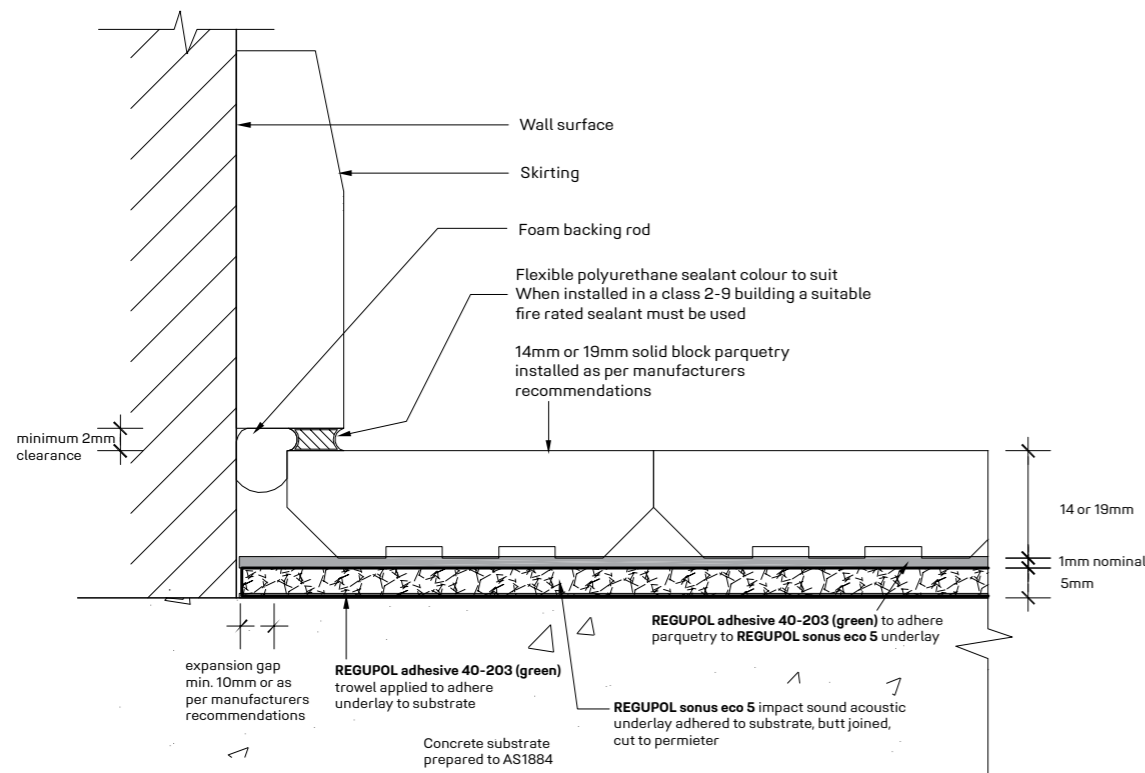
Important Note:
Use **REGUPOL barrier 99-101** when the moisture exceeds the required levels.

DUAL BOND ENGINEERED TIMBER

This **REGUPOL sonus eco 5** system reflects a typical residential application with approved engineered timber floor coverings. For all other applications please contact **REGUPOL** acoustic division. Please note that drawings are not to scale and are for illustration purposes only.



Important Note:
Use **REGUPOL barrier 99-101** when the moisture exceeds the required levels.



THE GO-TO, COST EFFICIENT SOLUTION



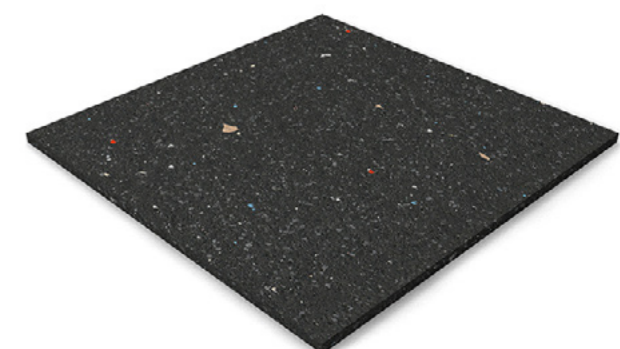
REGUPOL SONUS CORE 5

REGUPOL sonus core 5 is a high performance acoustic underlay, designed to reduce the transmission of impact sound generated by footfall noise.

Suitable for green buildings, the **REGUPOL sonus core 5** is a sustainable product made from post-consumer end of life tyre bound with polyurethane.

This environmentally preferable product has been independently certified as meeting the requirements of Good Environmental Choice Australia GECA 25-2011 v2.0i - Floor Coverings Standard. See www.geca.eco

REGUPOL sonus core 5 can be installed under bonded and unbonded screed beds, laminate and engineered timber floors. All applications should be checked for suitability with the selected floor finish, waterproof membranes, **REGUPOL** adhesives, tile adhesives, grouts etc.



Available in:

Rolls 1.25m x 10lm, 50lm
Thickness 5mm

ACOUSTICAL PERFORMANCE

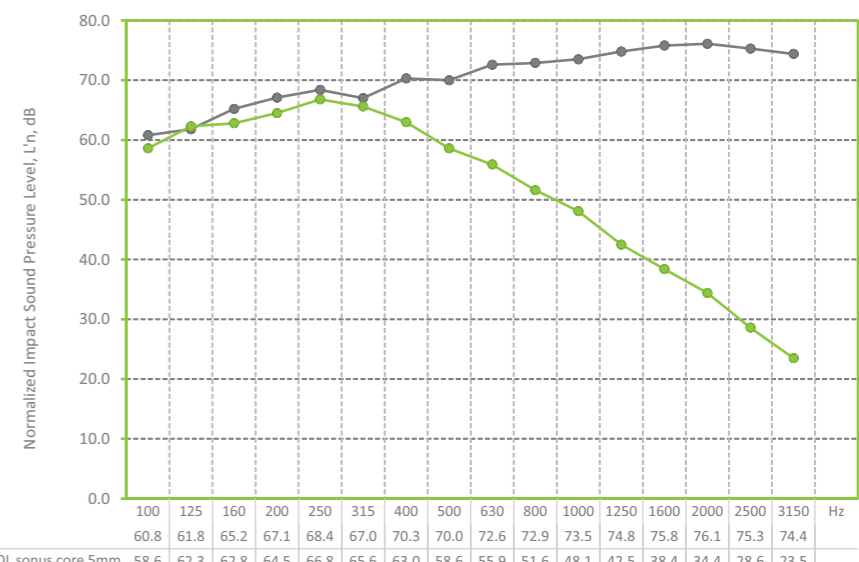
ENGINEERED TIMBER Normalised Impact Sound Pressure Levels

Tested at CSIRO Clayton, in accordance with ISO 140-8: 2006 (E), ISO 140-6-2006, AS ISO 717.2-2004, ASTM E989-89. Test area 10.8m². Results can vary when different floors are installed and/or if bonded.

REPORT RG111

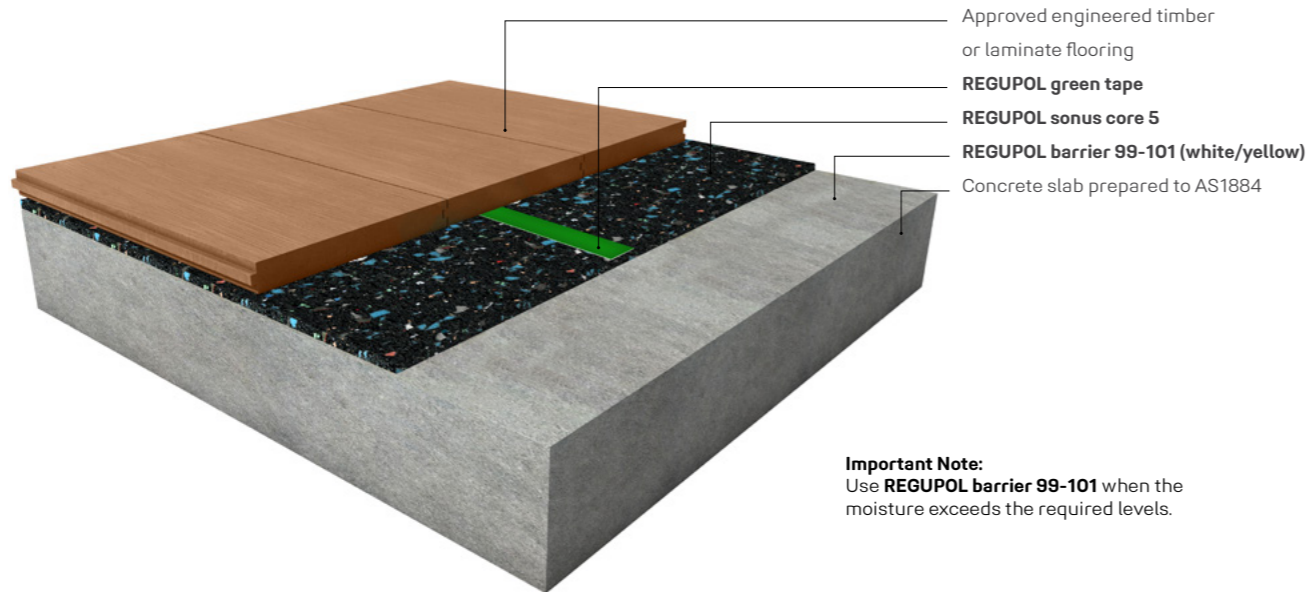
Layer of 14mm engineered timber (floating), to **REGUPOL sonus core 5mm**, to 150mm concrete slab (no ceiling).

$L_{n,w}$ 58dB ΔL_w 18dB 52 IIC



NON-BONDED ENGINEERED TIMBER OR LAMINATE

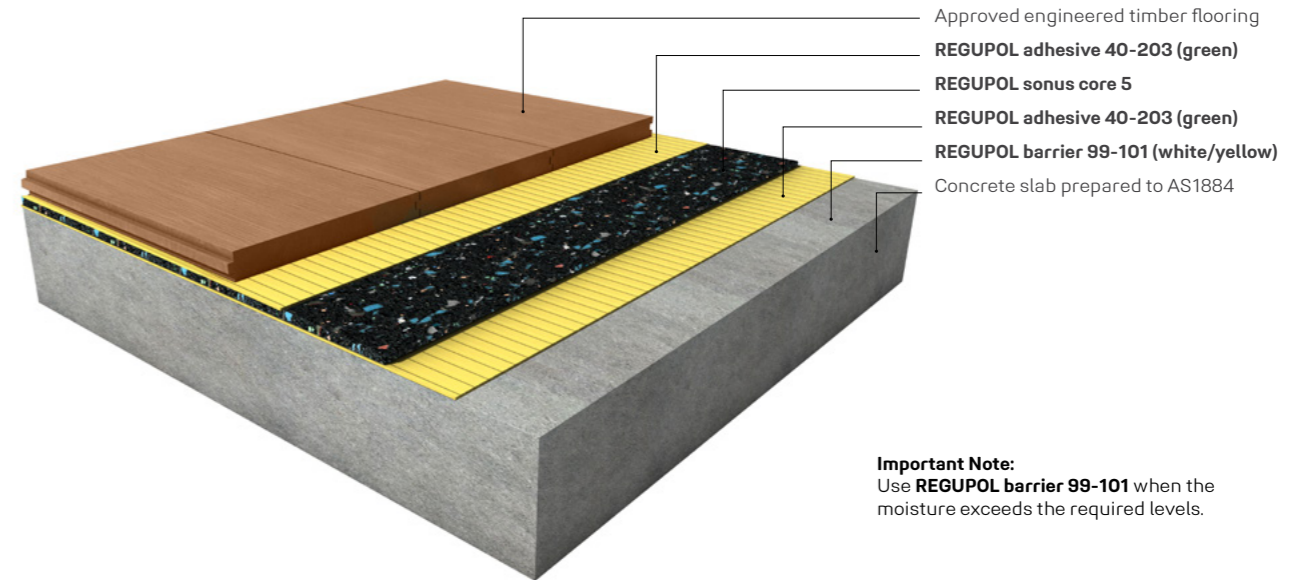
This **REGUPOL sonus core 5** system reflects a typical residential application with approved engineered timber or laminate floor coverings. For all other applications please contact **REGUPOL** acoustic division. Please note that drawings are not to scale and are for illustration purposes only.



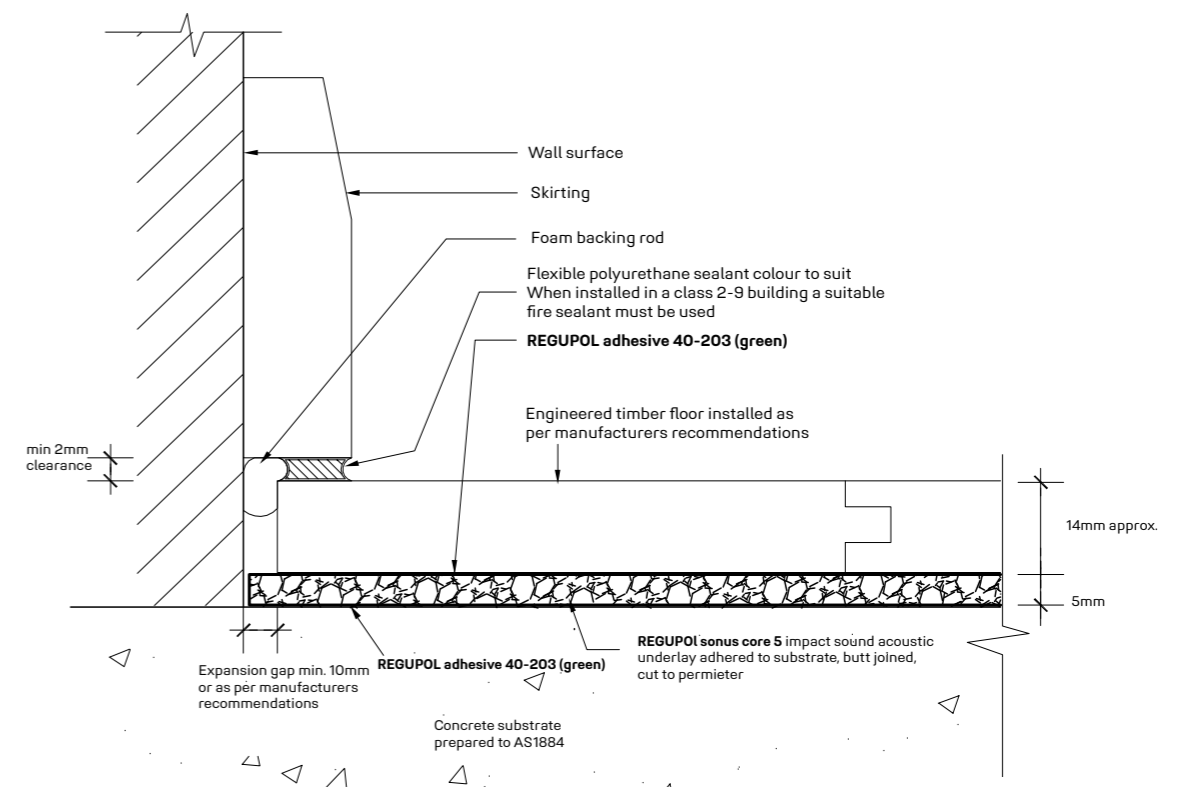
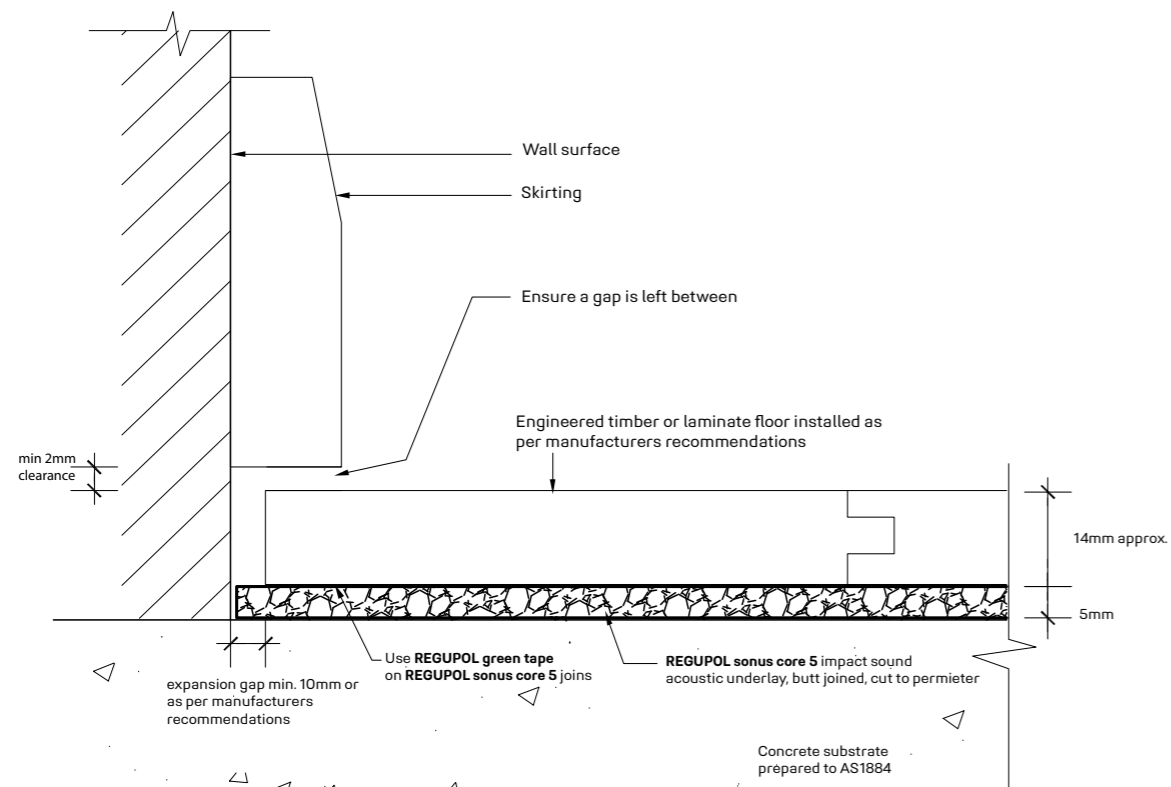
Important Note:
Use **REGUPOL barrier 99-101** when the moisture exceeds the required levels.

DUAL BOND ENGINEERED TIMBER

This **REGUPOL sonus core 5** system reflects a typical residential application with approved engineered timber floor coverings. For all other applications please contact **REGUPOL** acoustic division. Please note that drawings are not to scale and are for illustration purposes only.



Important Note:
Use **REGUPOL barrier 99-101** when the moisture exceeds the required levels.



HIGH VERSATILITY AND PERFORMANCE



REGUPOL SONUS CORE 10-S

REGUPOL sonus core 10-S is a high performance acoustic underlay, designed to reduce the transmission of impact sound generated by footfall noise.

Suitable for green buildings, the **REGUPOL sonus core 10-S** is a sustainable product made from post-consumer end of life tyre bound with polyurethane.

This environmentally preferable product has been independently certified as meeting the requirements of Good Environmental Choice Australia GECA 25-2011 v2.0i - Floor Coverings Standard. See www.geca.eco

REGUPOL sonus core 10-S can be installed under bonded and unbonded screed beds, laminate and engineered timber floors. All applications should be checked for suitability with the selected floor finish, waterproof membranes, **REGUPOL** adhesives, tile adhesives, grouts etc.



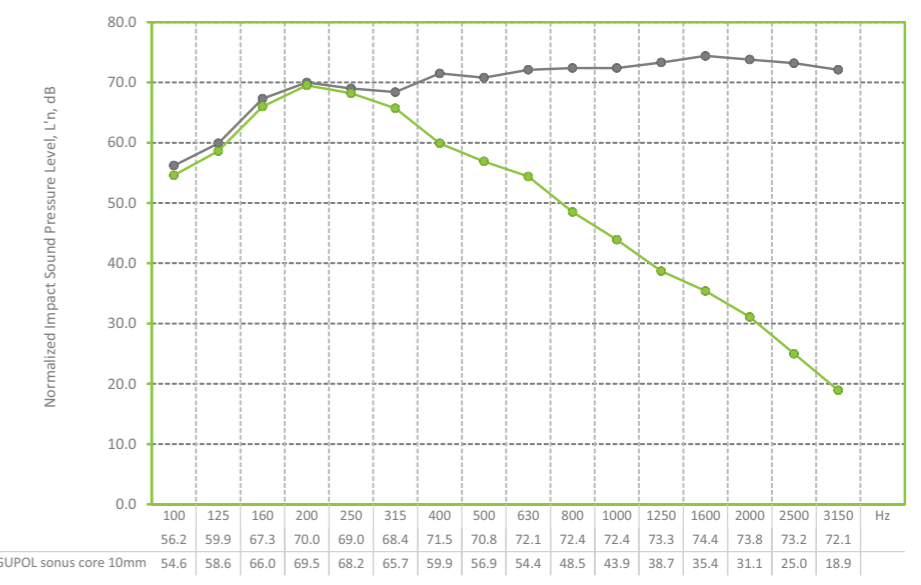
Available in:
 Rolls 1.25m x 10lm, 20lm
 Thickness 10mm

ACOUSTICAL PERFORMANCE

ENGINEERED TIMBER Normalised Impact Sound Pressure Levels
 Tested at CSIRO, in accordance with ISO 140-8: 2006 (E), ISO 140-6-2006, AS ISO 717.2-2004, ASTM E989-89.
 Test area 10.8m². Results can vary when different floors are installed and/or if bonded.

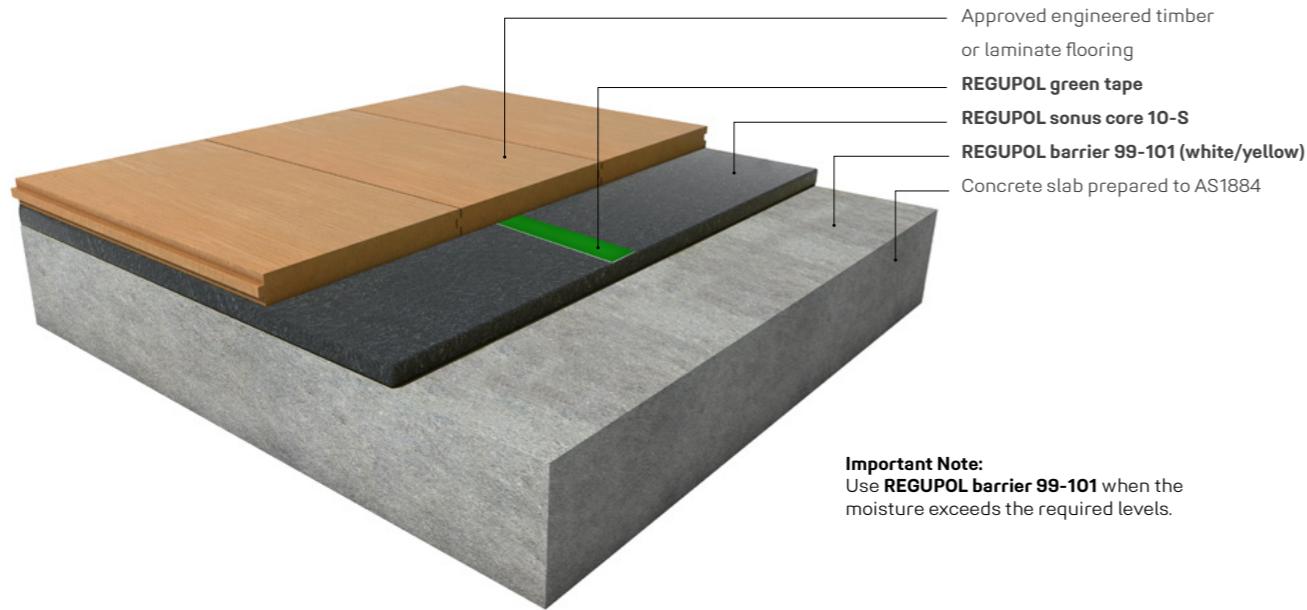
REPORT RG087
 Layer of 14mm engineered timber (floating), to **REGUPOL sonus core 10mm**, to 150mm concrete slab (no ceiling).

$L_{n,w}$ 58dB ΔL_w 18dB 50 IIC

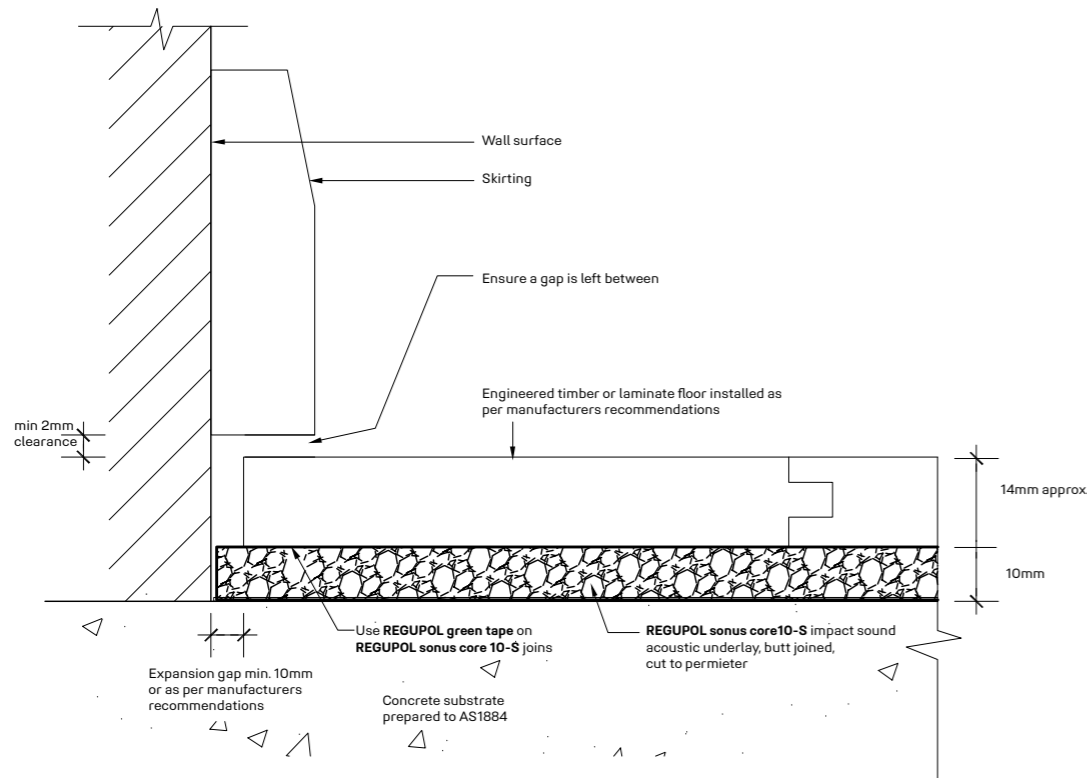


NON-BONDED ENGINEERED TIMBER OR LAMINATE

This **REGUPOL sonus core 10-S** system reflects a typical residential application with approved engineered timber or laminate floor coverings. For all other applications please contact **REGUPOL** acoustic division. Please note that drawings are not to scale and are for illustration purposes only.

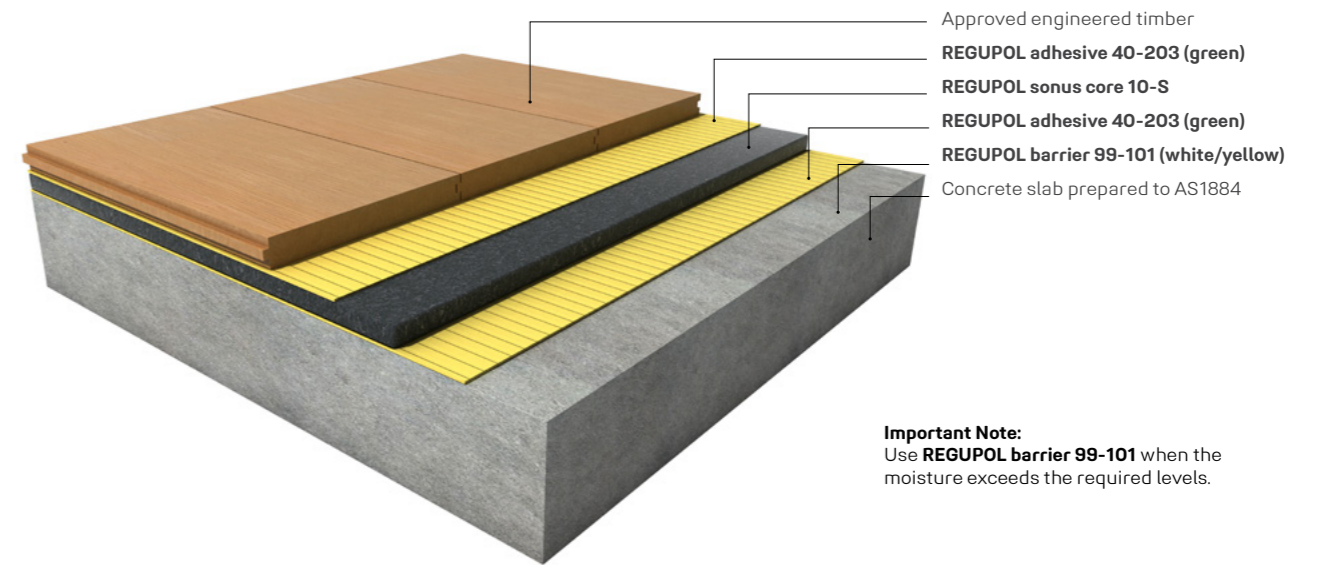


Important Note:
Use **REGUPOL barrier 99-101** when the moisture exceeds the required levels.

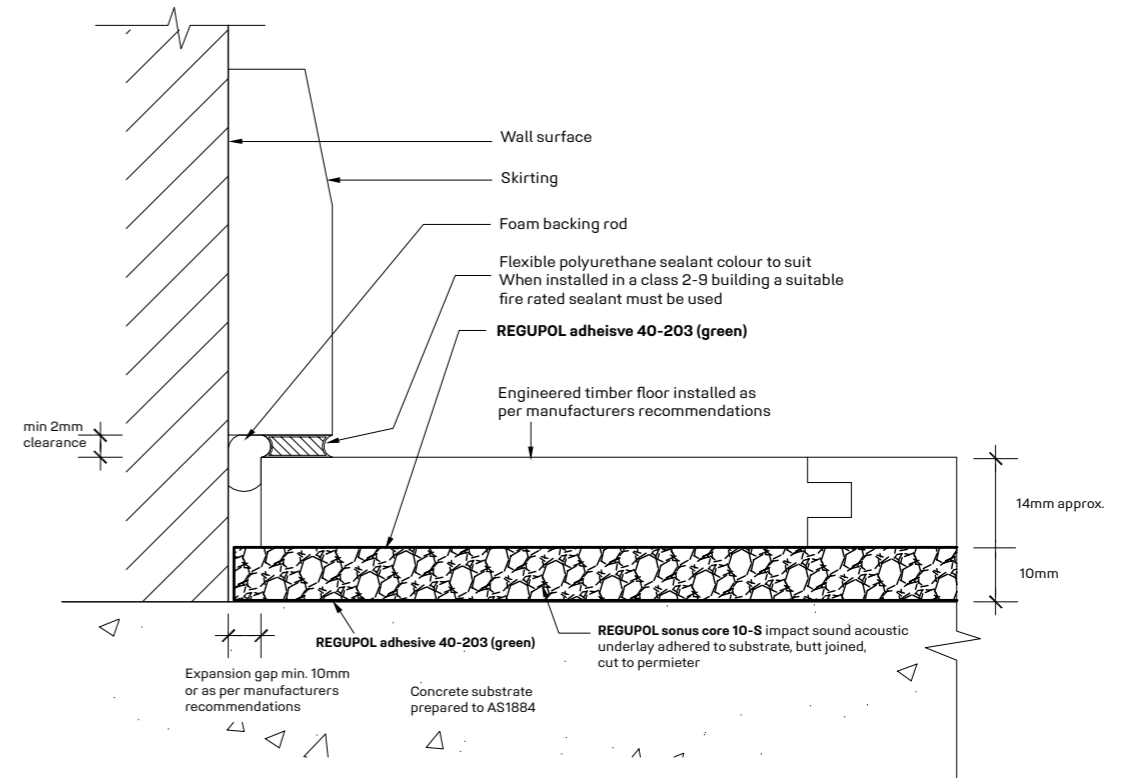


DUAL BOND ENGINEERED TIMBER

This **REGUPOL sonus core 10-S** system reflects a typical residential application with approved engineered timber floor coverings. For all other applications please contact **REGUPOL** acoustic division. Please note that drawings are not to scale and are for illustration purposes only.



Important Note:
Use **REGUPOL barrier 99-101** when the moisture exceeds the required levels.



VALUE ENGINEERED FOR LONG TERM PERFORMANCE



REGUPOL SONUS CURVE 6

REGUPOL sonus curve 6 is a high performance acoustic underlay, designed to reduce the transmission of impact sound generated by footfall noise.

Suitable for green buildings, the **REGUPOL sonus curve 6** is a sustainable product made from post-consumer end of life tyre bound with polyurethane.

This environmentally preferable product has been independently certified as meeting the requirements of Good Environmental Choice Australia GECA 25-2011 v2.0i - Floor Coverings Standard. See www.geca.eco

REGUPOL sonus curve 6 can be installed under bonded and unbonded screed beds as a complete system with

stone, marble, tiles or selected floor coverings. Also suitable as a system under cement sheeting or plywood sheeting with selected floor coverings such as solid timber and approved engineered timber floors. All applications should be checked for suitability with the selected floor finish, waterproof membranes, **REGUPOL** adhesives, tile adhesives, grouts etc.



Available in:

- Rolls 1.25m x 20lm
- Thickness 6mm dimpled

ACOUSTICAL PERFORMANCE

ENGINEERED TIMBER Normalised Impact Sound Pressure Levels

Tested at CSIRO Clayton, in accordance with ISO 140-8: 2006 (E), ISO 140-6-2006, AS ISO 717.2-2004, ASTM E989-89. Test area 10.8m². Results can vary when different floors are installed and/or if bonded.

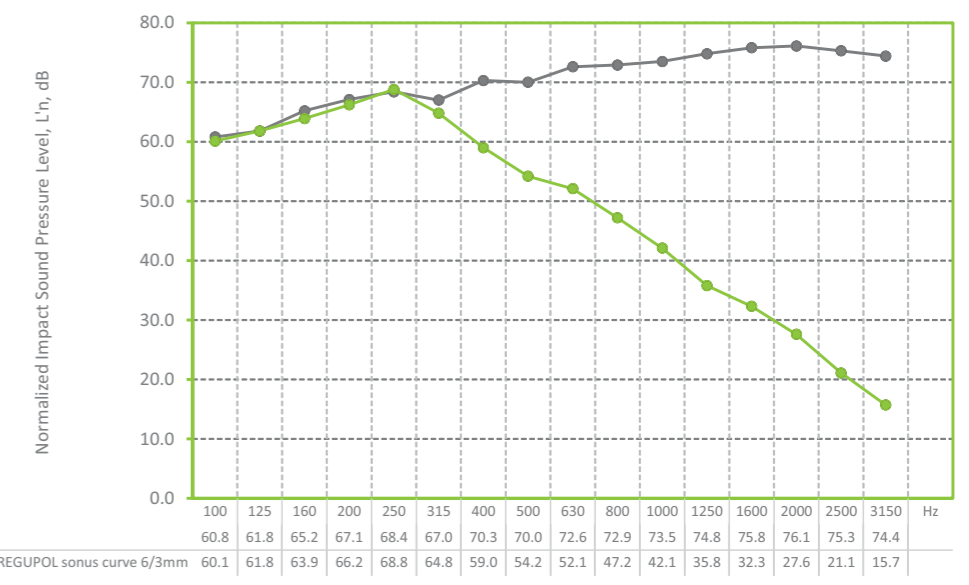
REPORT RG113

Layer of 14mm engineered timber (floating), to **REGUPOL sonus curve 6/3mm** dimpled, to 150mm concrete slab (no ceiling).

Ln,w
58dB

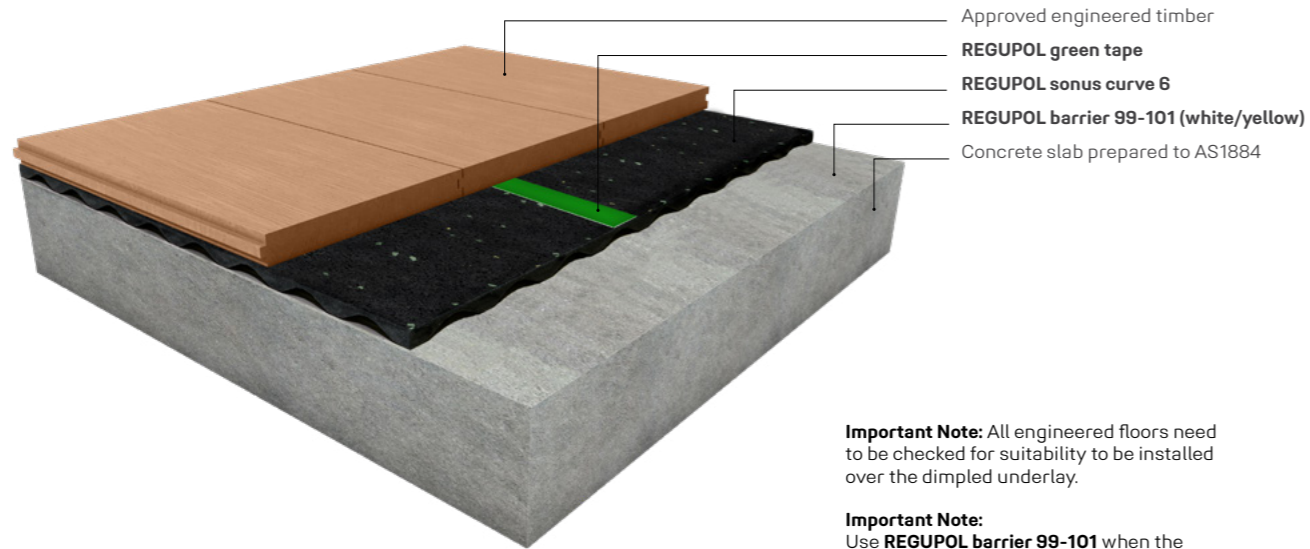
ΔLw
17dB

51
IIC



NON-BONDED ENGINEERED TIMBER

This **REGUPOL sonus curve 6** system reflects a typical residential application with approved engineered timber floor coverings. For all other applications please contact **REGUPOL** acoustic division. Please note that drawings are not to scale and are for illustration purposes only.

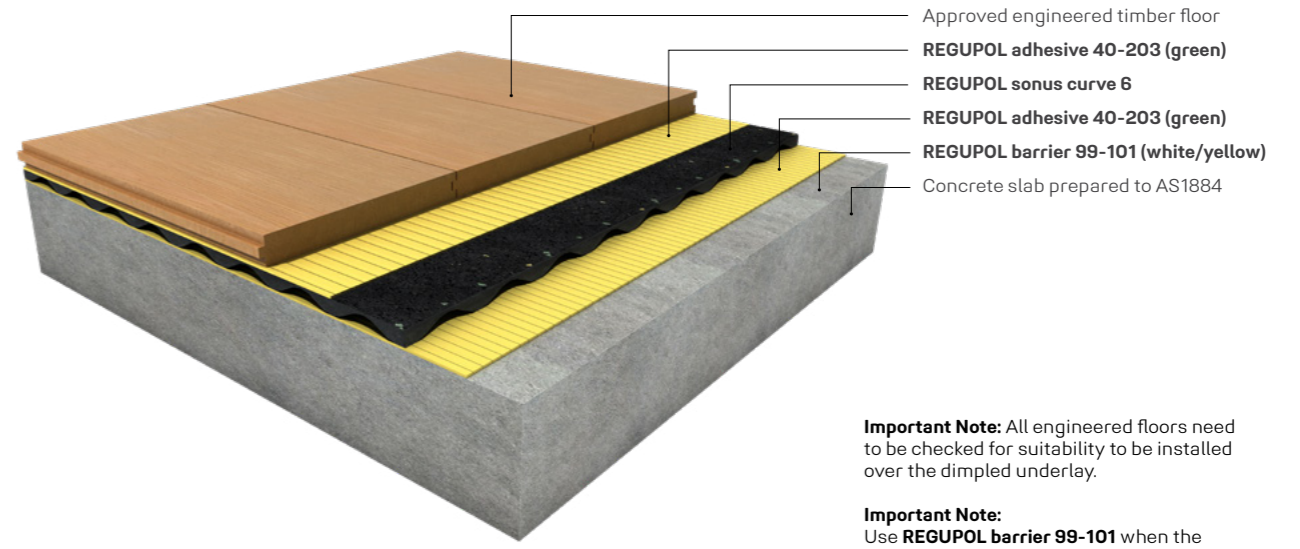


Important Note: All engineered floors need to be checked for suitability to be installed over the dimpled underlay.

Important Note: Use **REGUPOL barrier 99-101** when the moisture exceeds the required levels.

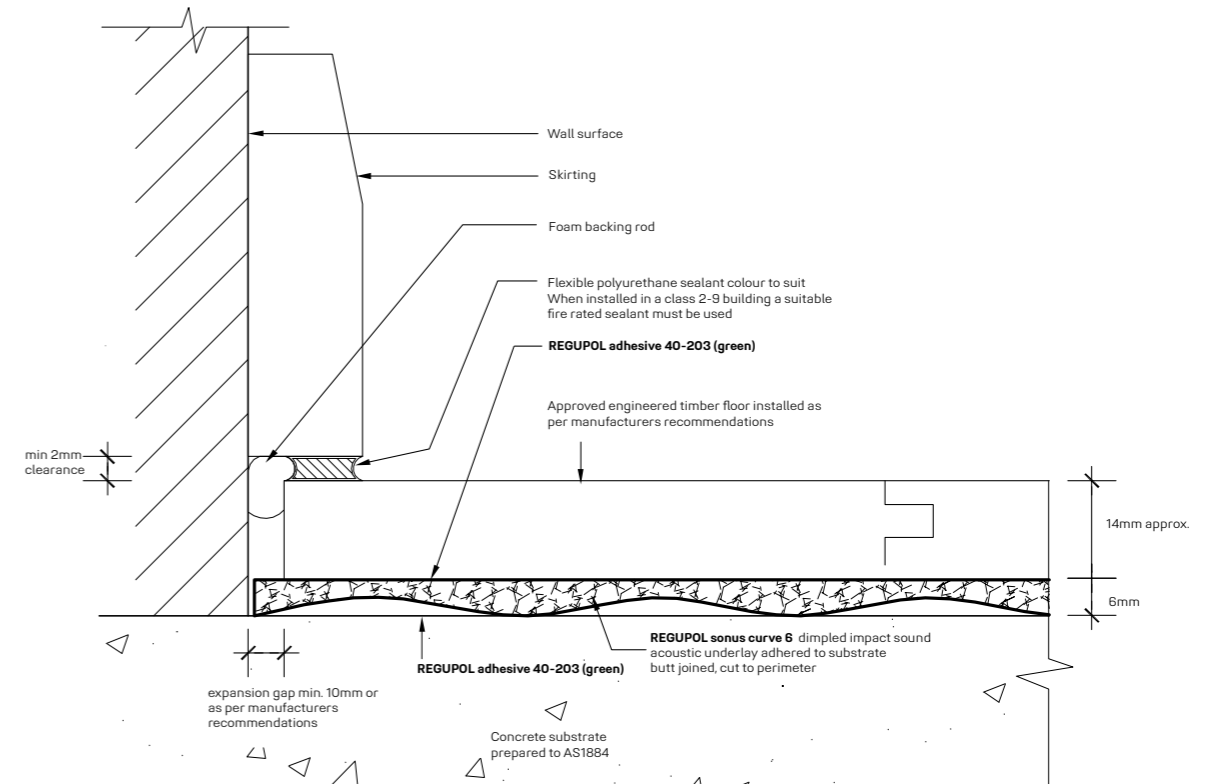
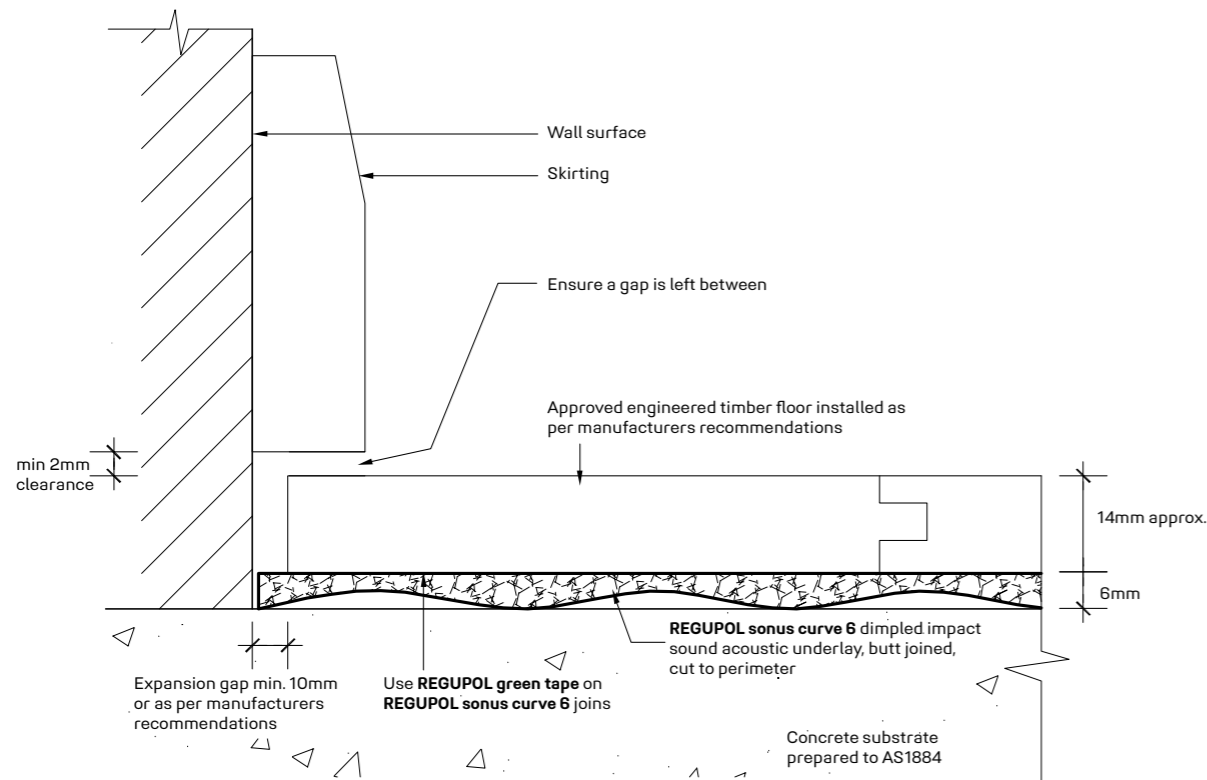
DUAL BOND ENGINEERED TIMBER

This **REGUPOL sonus curve 6** system reflects a typical residential application with approved engineered timber floor coverings. For all other applications please contact **REGUPOL** acoustic division. Please note that drawings are not to scale and are for illustration purposes only.



Important Note: All engineered floors need to be checked for suitability to be installed over the dimpled underlay.

Important Note: Use **REGUPOL barrier 99-101** when the moisture exceeds the required levels.



A SOUND CHOICE FOR HIGH PERFORMANCE



REGUPOL SONUS CURVE 8

REGUPOL sonus curve 8 is a high performance acoustic underlay, designed to reduce the transmission of impact sound generated by footfall noise.

Suitable for green buildings, the **REGUPOL sonus curve 8** is a sustainable product made from post-consumer end of life tyre bound with polyurethane.

This environmentally preferable product has been independently certified as meeting the requirements of Good Environmental Choice Australia GECA 25-2011 v2.0i - Floor Coverings Standard. See www.geca.eco

REGUPOL sonus curve 8 can be installed under screed beds as a complete system with stone, marble, tiles or selected floor coverings.

Also suitable as a system under cement sheeting or plywood sheeting with selected floor coverings such as solid timber and approved engineered timber floors. All applications should be checked for suitability with the selected floor finish, waterproof membranes, **REGUPOL** adhesives, tile adhesives, grouts etc.



Available in:

Rolls 1.15m x 20lm
Thickness 8mm dimpled

ACOUSTICAL PERFORMANCE

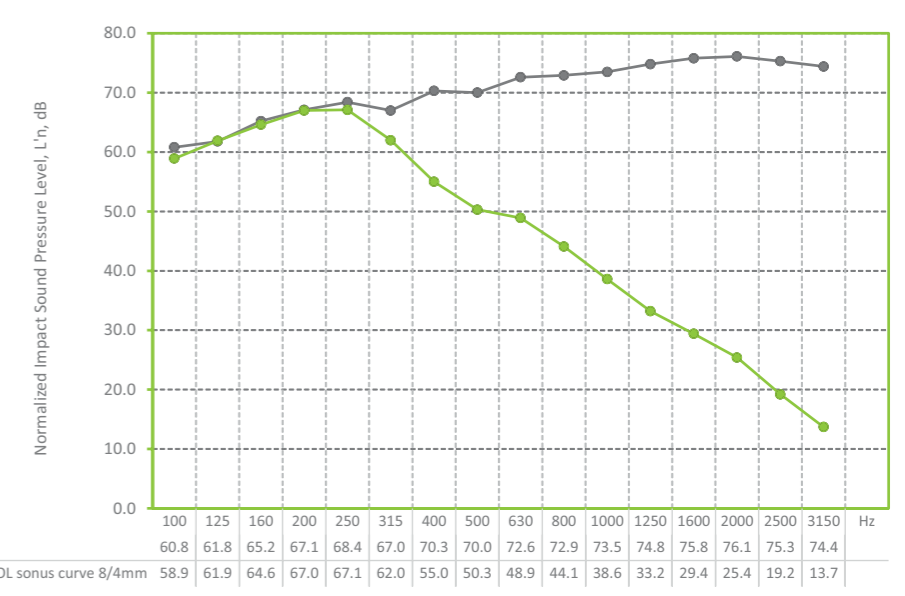
ENGINEERED TIMBER Normalised Impact Sound Pressure Levels

Tested at CSIRO Clayton, in accordance with ISO 140-8: 2006 (E), ISO 140-6-2006, AS ISO 717.2-2004, ASTM E989-89. Test area 10.8m². Results can vary when different floors are installed and/or if bonded.

REPORT RG112

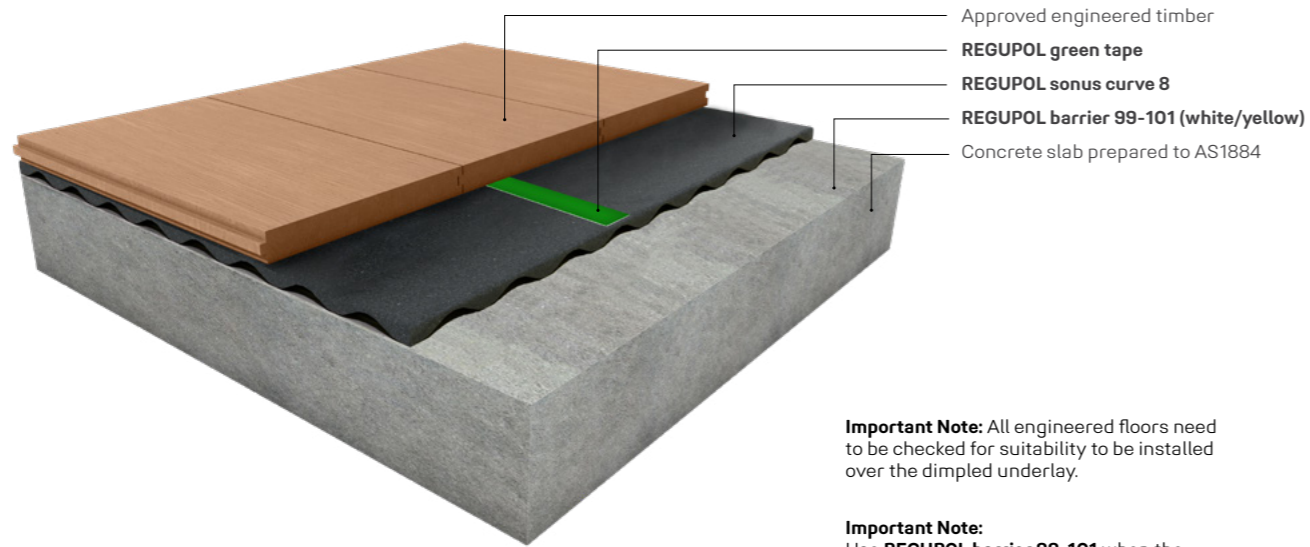
Layer of 14mm engineered timber (floating), to **REGUPOL sonus curve 8/4mm** dimpled, to 150mm concrete slab (no ceiling).

Ln,w 57dB ΔLw 18dB 53 IIC



NON-BONDED ENGINEERED TIMBER

This **REGUPOL sonus curve 8** system reflects a typical residential application with approved engineered timber floor coverings. For all other applications please contact **REGUPOL** acoustic division. Please note that drawings are not to scale and are for illustration purposes only.

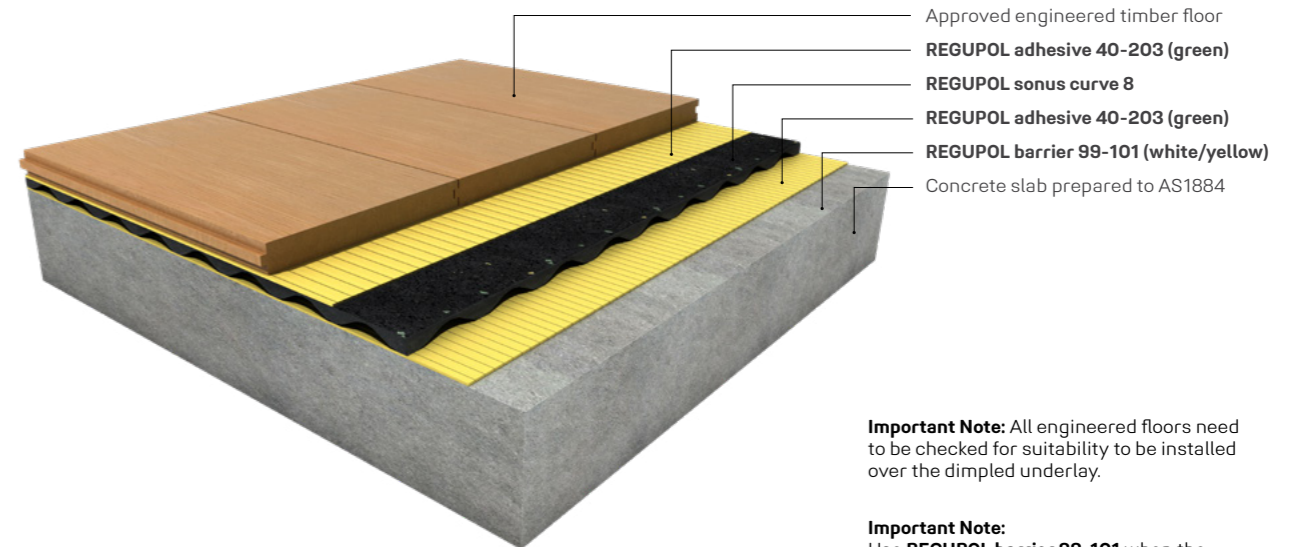


Important Note: All engineered floors need to be checked for suitability to be installed over the dimpled underlay.

Important Note: Use **REGUPOL barrier 99-101** when the moisture exceeds the required levels.

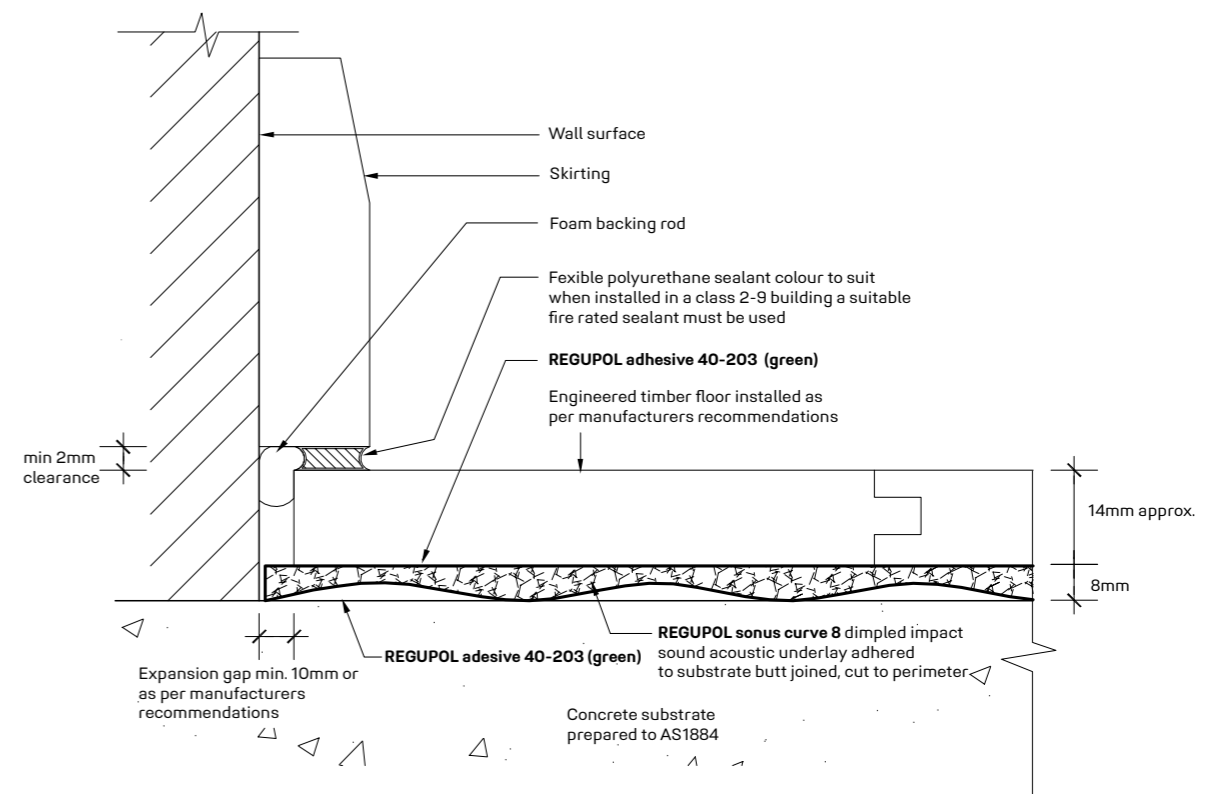
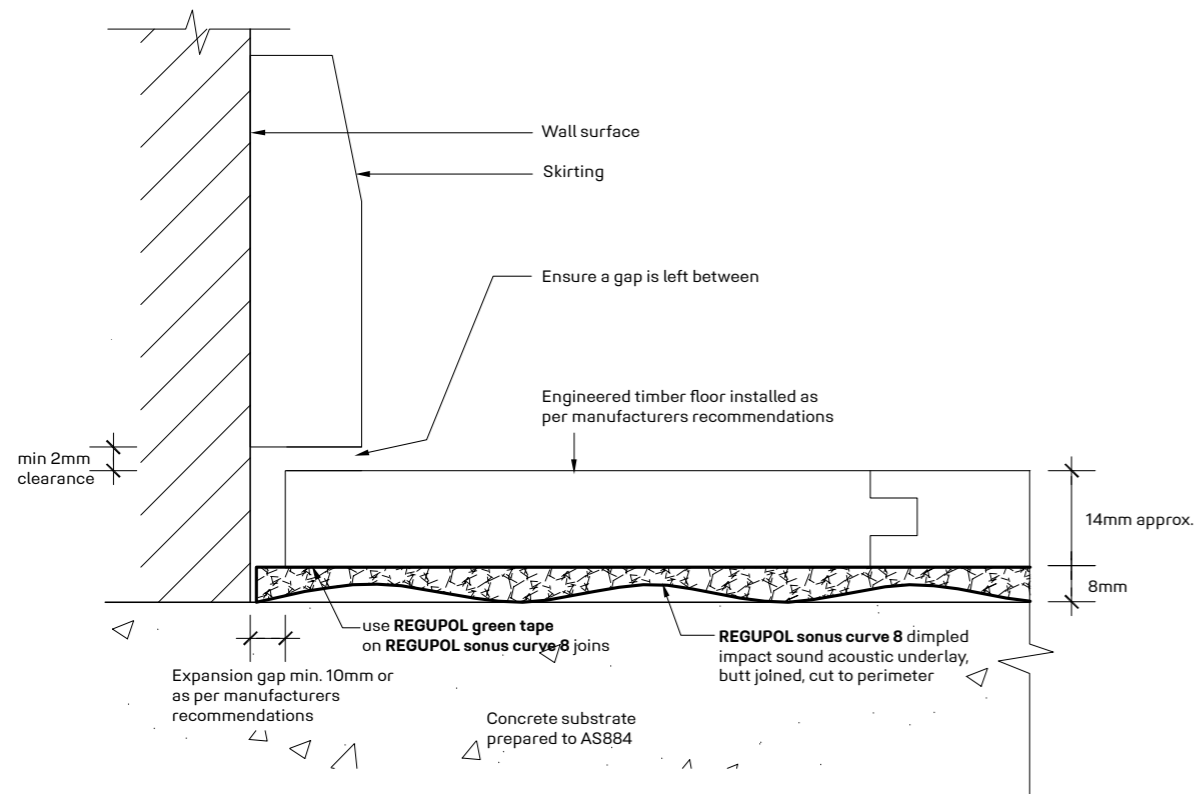
DUAL BOND ENGINEERED TIMBER

This **REGUPOL sonus curve 8** system reflects a typical residential application with approved engineered timber floor coverings. For all other applications please contact **REGUPOL** acoustic division. Please note that drawings are not to scale and are for illustration purposes only.



Important Note: All engineered floors need to be checked for suitability to be installed over the dimpled underlay.

Important Note: Use **REGUPOL barrier 99-101** when the moisture exceeds the required levels.



THE HIGHEST PERFORMING SOLUTION



REGUPOL SONUS CURVE 17

REGUPOL sonus curve 17 is a high performance acoustic underlay, designed to reduce the transmission of impact sound generated by footfall noise.

Suitable for green buildings, the **REGUPOL sonus curve 17** is a sustainable product made from post-consumer end of life tyre bound with polyurethane.

This environmentally preferable product has been independently certified as meeting the requirements of Good Environmental Choice Australia GECA 25-2011 v2.0i - Floor Coverings Standard. See www.geca.eco

REGUPOL sonus curve 17 can be installed under bonded and unbonded screed beds as a complete system with stone, marble, tiles or selected floor coverings. Also suitable as a system under cement sheeting or plywood sheeting with

selected floor coverings such as solid timber and engineered timber floors. All applications should be checked for suitability with the selected floor finish, waterproof membranes, **REGUPOL** adhesives, tile adhesives, grouts etc.



Available in:

Rolls	1.25m x 10lm
Thickness	17mm dimpled

ACOUSTICAL PERFORMANCE

T&G TIMBER Normalised Impact Sound Pressure Levels - Indicative Result Only*

Tested at CSIRO, sample was bonded together and fixed to the concrete slab. Sample size 1200mm x 1200mm.

* Sample size was not full laboratory tested and is only indicative of result. Results can vary when different floors are installed and/or if bonded.

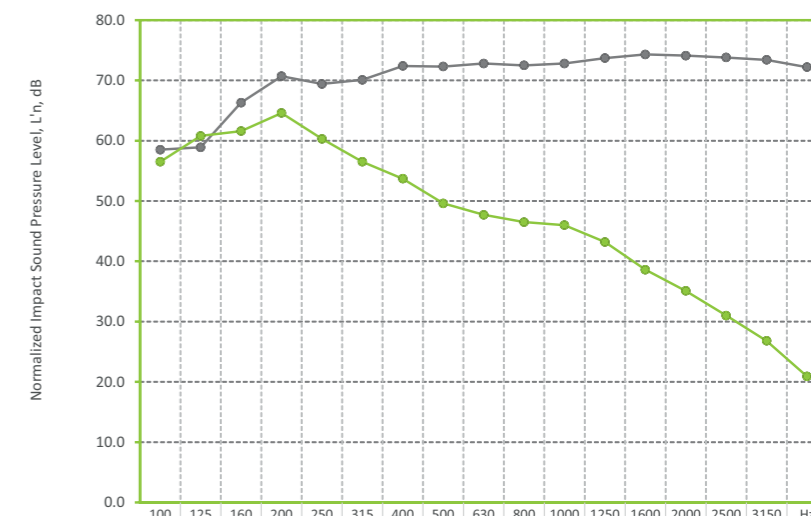
REPORT RG018

Layer of 19mm T&G timber bonded to 18mm yellow tongue, bonded to **REGUPOL sonus curve 17/8mm**, to 170mm concrete slab.

$L_{n,w}$
53dB

ΔL_w
27dB

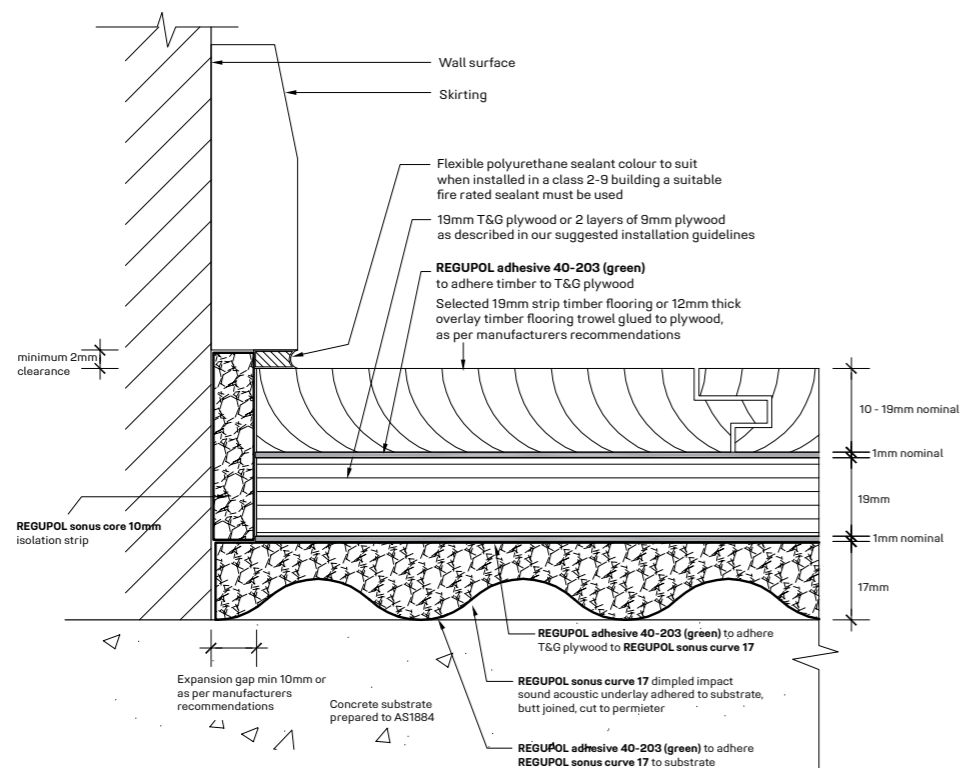
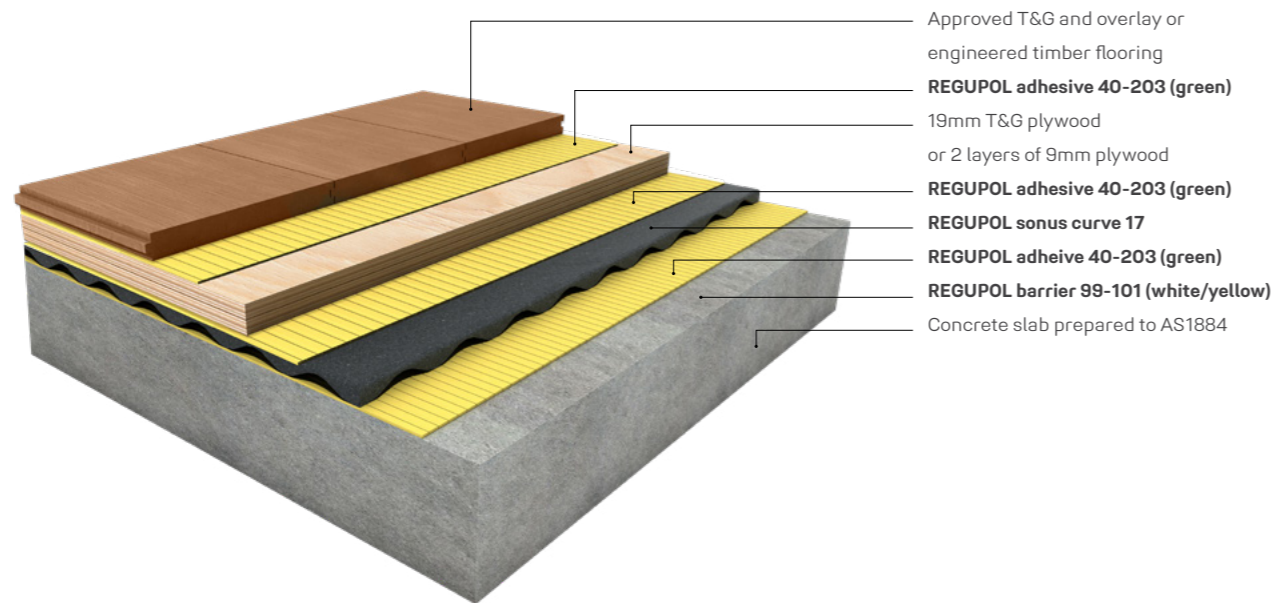
55
IIC



Frequency (Hz)	Bare Slab (L _n , dB)	T&G Timber to REGUPOL sonus curve 17/8mm (L _n , dB)
100	58.5	56.5
125	58.9	60.8
160	66.3	61.6
200	70.7	64.6
250	69.4	60.3
315	70.1	56.5
400	72.4	53.7
500	72.3	49.6
630	72.8	47.7
800	72.5	46.5
1000	72.8	46.0
1250	73.7	43.2
1600	74.3	38.6
2000	74.1	35.1
2500	73.8	31.0
3150	73.4	26.8
Hz	72.2	20.9

T&G / OVERLAY TIMBER FLOORS OVER PLYWOOD

This **REGUPOL sonus curve 17** system reflects a typical residential application with approved T&G and overlay timber floor coverings. For all other applications please contact **REGUPOL** acoustic division. Please note that drawings are not to scale and are for illustration purposes only.





HOW ARE SOLUTIONS EASY AND INSPIRING? **TOGETHER.**

We've got it covered.

REGUPOL is more than sports and multi-purpose surfaces. More than our acoustic underlayments. And more than our state-of-the-art track and field surfaces. For over 65 years, providing solutions and delivering exceptional customer service has been our business. We understand that paying attention to the details is critical from the start of any project. Making changes later means inconvenience and additional expenses. We sweat those details so you don't have to.

Because we invented the technology to recycle end of life tyres into unique products, you benefit from decades of experience and expertise that only we can offer. That means the right information, advice, and answers when you need them, along with products that have been refined, tested, and retested over the years by our R&D team to deliver precision performance that will not disappoint. It is all accomplished with manufacturing that meets the highest quality standards with the strictest environmental requirements.

Delivering results, developing leaders worldwide
We have grown steadily since 1954 – new products developed, new subsidiaries established and new locations added.

Today, **REGUPOL** is still a family enterprise, with third and fourth generations currently working in company management. We have eleven offices in seven countries, all serving as epicentres for innovation, ingenuity, and community.

Behind every **REGUPOL** product, there is a talented team that works together, across the globe, to create performance solutions from reclaimed materials that deliver durability and protection where you need it most without sacrificing sustainability. Whether used to protect surfaces and optimize load transport or to dampen sound and vibration, **REGUPOL** gets it done. We deliver with a level of product, customer service, and investment that only the inventor can offer.

No matter the customer—we aim to make their experience easy and inspiring, at an only-at-**REGUPOL** value.



Ask the experts about the best solution for your project.
REGUPOL Australia +61 2 4624 0050
acousticsales@regupol.com.au



HOW DO YOU GET TO THE TOP? **TOGETHER.**

When you partner with REGUPOL, you become part of a community with a shared goal of leading with excellence and innovation. Our path to success has always been rooted in product innovation and great service, with an eye on the future. We transform over 90,000 tons of high-quality recycled materials every year to create products that meet and exceed industry standards.

Over the course of our 65-year journey to become a leader in our category of building materials, we have built up a wealth of expertise and forged long-term customer partnerships in 132 countries worldwide—like sprint legend Usain Bolt, who made history on our blue REGUPOL running track in Berlin's Olympic Stadium in 2009 when he set two world records.

"There's nothing like running on REGUPOL. To me, REGUPOL equals gold. In more ways than one." - Usain Bolt

We've got it covered.

750

employees

11

locations worldwide

90.000

tons of high-quality recycled materials per year

132

countries with satisfied customers





REGUPOL Australia Pty. Ltd.

155 Smeaton Grange Road
Smeaton Grange NSW 2567
phone +61 2 4624 0050
acousticsales@regupol.com.au

REGUPOL Germany GmbH &Co. KG

REGUPOL America LLC

REGUPOL Acoustics Middle East FZE

REGUPOL Schweiz AG

REGUPOL Zebra Athletics LLC

BSW Shanghai CO. LTD.

www.regupol.com.au