



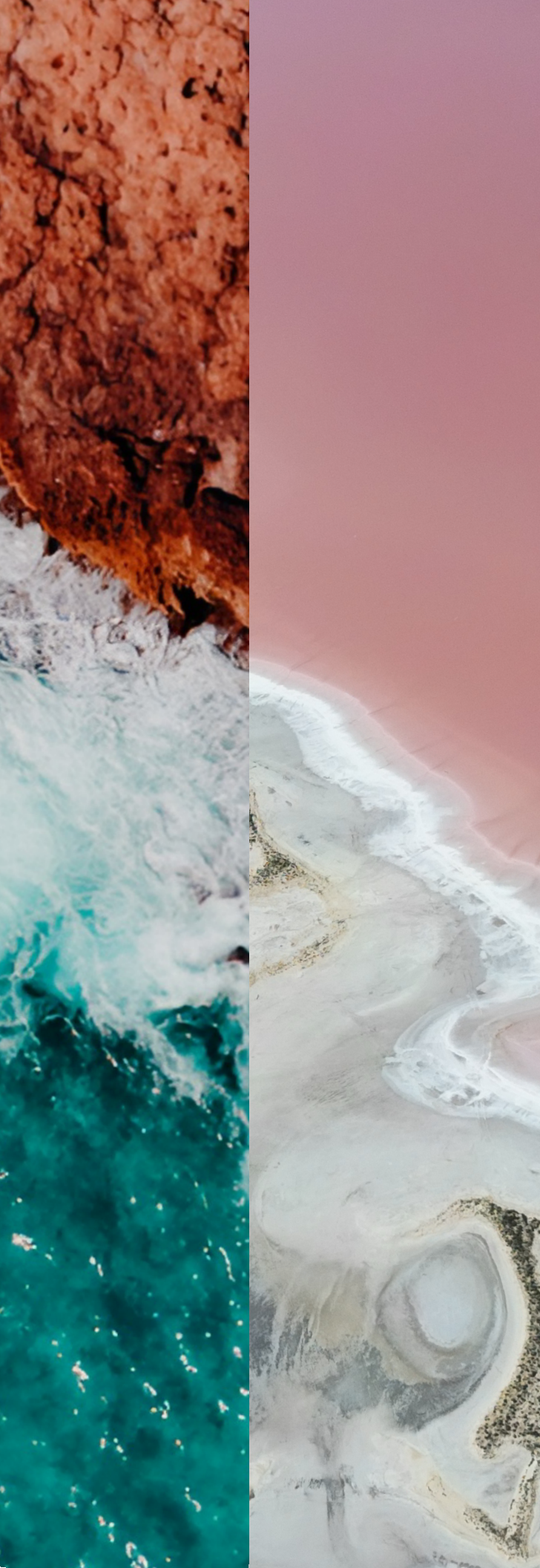
LOW EMBODIED CARBON | CARBON NEUTRAL



Accent

ShawContract®





ACCENT

An Australian Colour Story

Accent is a versatile and value-driven carpet tile collection featuring colours inspired by the stunning beauty of Australia's landscapes. Each shade tells a story, from the earthy browns of the iconic paperbark tree to the lush greens of the Daintree Rainforest. These nuanced colours celebrate the elements that make Australia extraordinary.

Crafted with EcoSolution Q100® — a high-performance nylon fibre made from 100% recycled pre-consumer content —

Accent is optimised for low embodied carbon and is carbon neutral.

COVER: **ACCENT (CARPET TILE 5T475)** IN GREAT SANDY DESERT (57679)
+ CATTLEMEN DENIM (57410) | INSTALLED MONOLITHIC

A Sense of Place

Thoughtfully designed for creativity and function, **Accent** offers 24" x 24" carpet tiles that effortlessly coordinate with a wide range of Shaw Contract products. Whether grounding a space or making a bold statement, its timeless palette brings versatility to any project — supporting your unique design narrative with a deep sense of place.

Available In Stock Australia, **Accent** blends practicality with a connection to Australia, empowering you to design spaces that embody the distinctive beauty of this extraordinary land.

In Stock

COVER: **ACCENT (CARPET TILE 5T475)** IN CATTLEMEN DENIM (57410) + GREAT SANDY DESERT (57679) + SALTBUSH (57371)
INSTALLED MONOLITHIC







A World of Possibility, Grounded in Place

From grounding calm, restorative spaces to defining bold, expressive interiors, **Accent** has been chosen to tell design stories across a diverse range of projects. Inspired by Australia's natural beauty, its versatile palette invites you to begin your next design journey.

300 FLINDERS STREET
by Gray Puksand & McCormack

Colour Featured: Kakadu 57316
Photography by Elise Scott





ABOVE: **ACCENT (CARPET TILE 5T475)** IN GALAH (57800) | INSTALLED MONOLITHIC
RIGHT: **ACCENT (CARPET TILE 5T475)** IN JACARANDA (57900) | INSTALLED MONOLITHIC





300 FLINDERS STREET
by Gray Puksand & McCormack

Colour Featured: Red Ochre 57713
Photography by Elise Scott

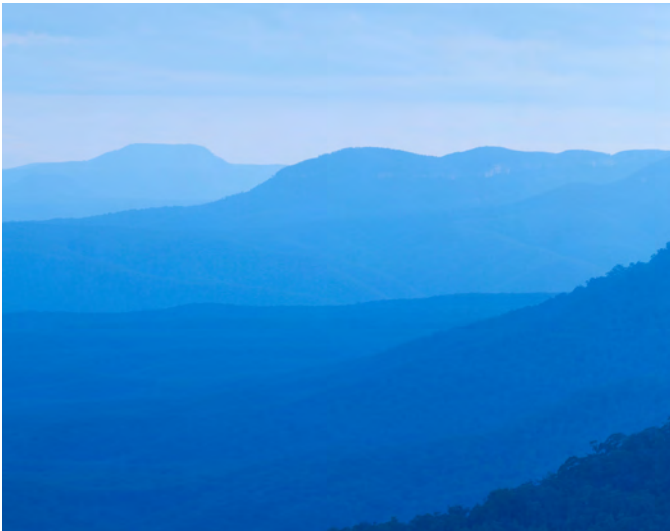


LEFT: **ACCENT (CARPET TILE 5T475) IN PAPERBARK (57710) | INSTALLED MONOLITHIC**

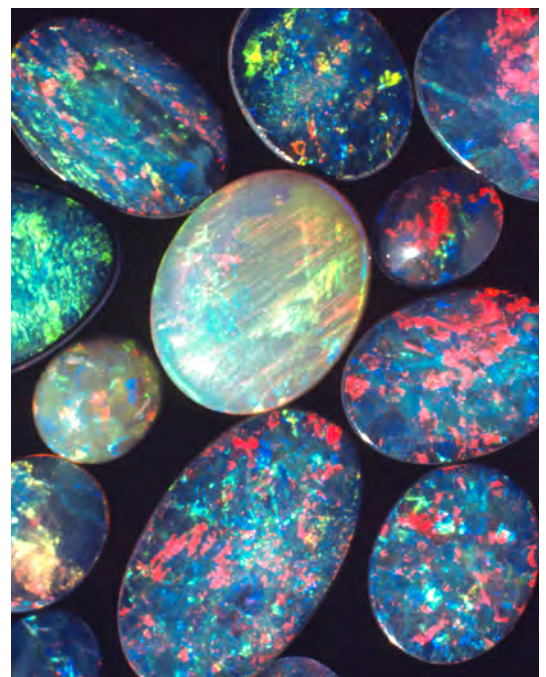
Colour shaped by the beauty of Australia.



EUCALYPTUS (57396) Embodies the fresh, natural greens of the iconic Australian eucalyptus leaves, bringing a sense of calm and connection to nature.



BLUE MOUNTAINS (57496) Embodies the rich, deep blue tones inspired by the dramatic hues of the Blue Mountains.



OPAL (57497) Captures the shimmering blue-green hues reminiscent of Australia's legendary opal gemstones, evoking a sense of natural beauty and brilliance.



MURRAY SALT (57870) Reflects the soft pink hues inspired by the shimmering salt flats along the Murray River.



JACARANDA (57900) Reflects the gentle lilac tones of the blooming jacaranda trees.

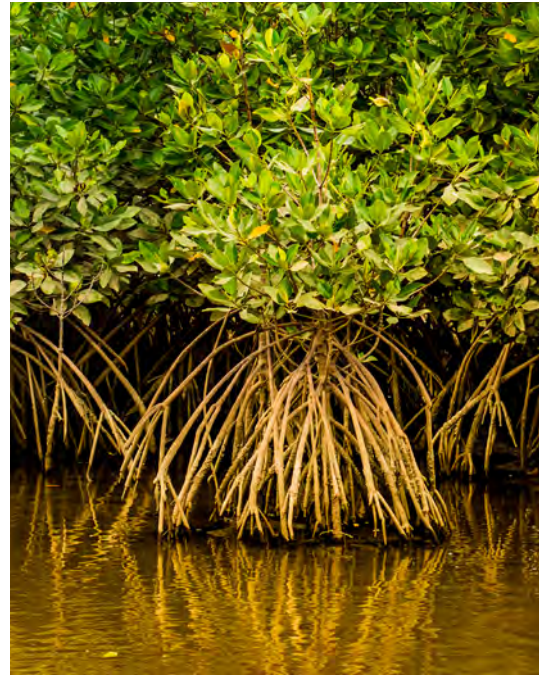


PAPERBARK (57710) Soft, light brown tones captures the subtle, textured hues of the paperbark tree.



KALGOORLIE (57678)

Radiates the warm, golden tones of the region's goldfields.



MANGROVE (57337)

Captures the earthy brown-green shades reminiscent of the thriving roots and foliage of the coastal mangroves.



DAINTREE (57375) Showcases the lush, vibrant green tones inspired by the dense canopies of Australia's iconic Daintree Rainforest.

KOOKABURRA (57411)

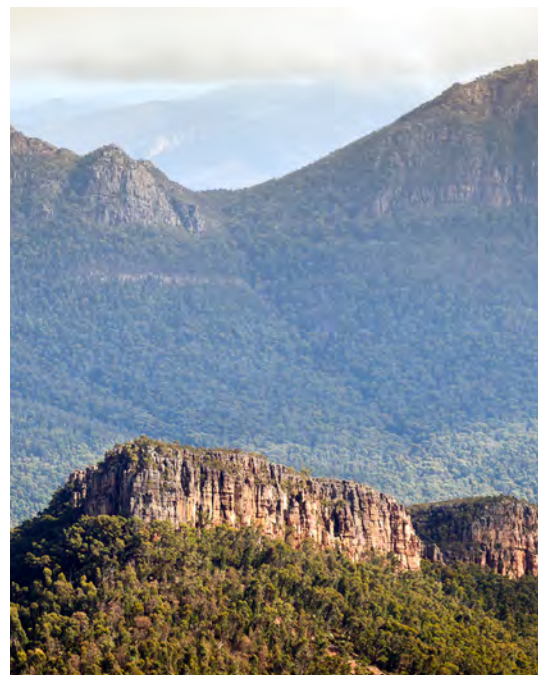
Draws its serene blue tones from the delicate wash of colour found on the wings of the kookaburra.



RED OCHRE (57713)

Reflects the vibrant, earthy red tones of Australia's sun-soaked landscapes.

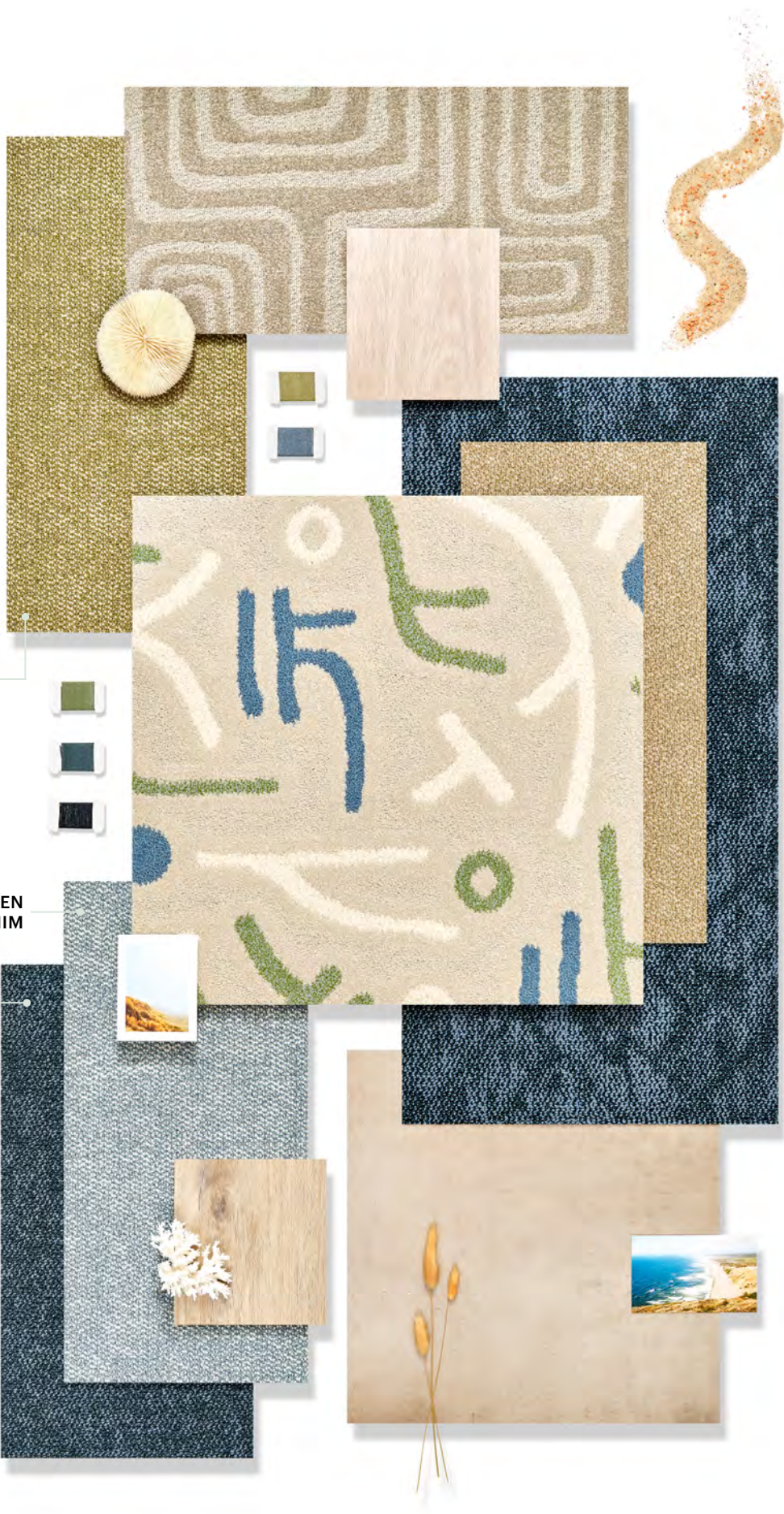
GRAMPIANS (57480) Captures the muted grey-green tones of the rugged landscapes and native vegetation of Australia's distinctive Grampians region.



SALTBUSH

CATTLEMEN
DENIM

BELLS BEACH

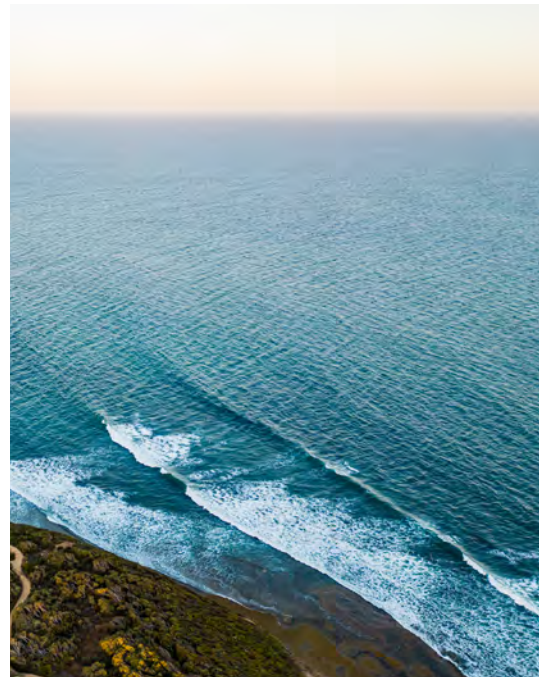




SALTBUSH (57371) Reflects the soft green hues of the resilient saltbush plant.



CATTLEMEN DENIM (57410) Draws inspiration from the rich, durable blue tones of traditional denim worn by the region's cattlemen.



BELLS BEACH (57462) Captures the vibrant blues of the waves of one of Australia's most iconic surf beaches.

RIVER GUM (57770) Captures the warm brown tones of the eucalyptus trees that flourish along the riverbanks.

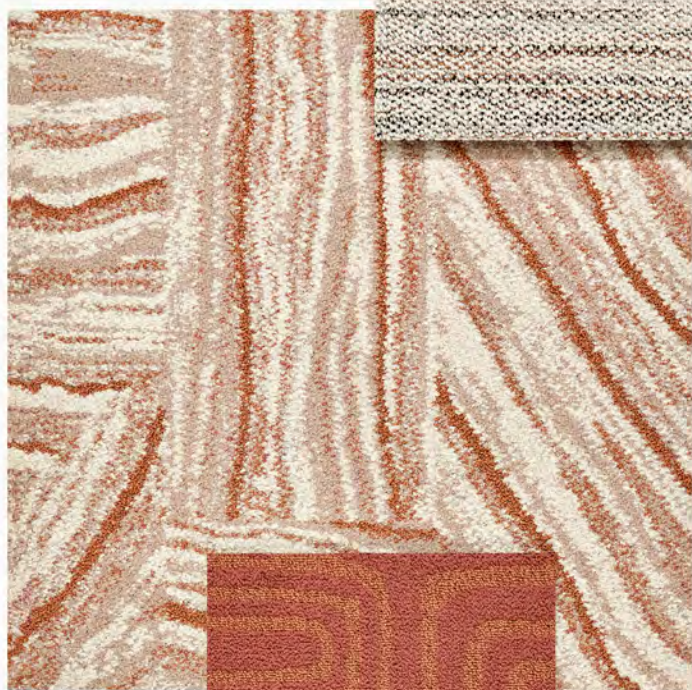


KAKADU (57316) Reflects the vibrant, lush greens inspired by the diverse landscapes of the Kakadu National Park.

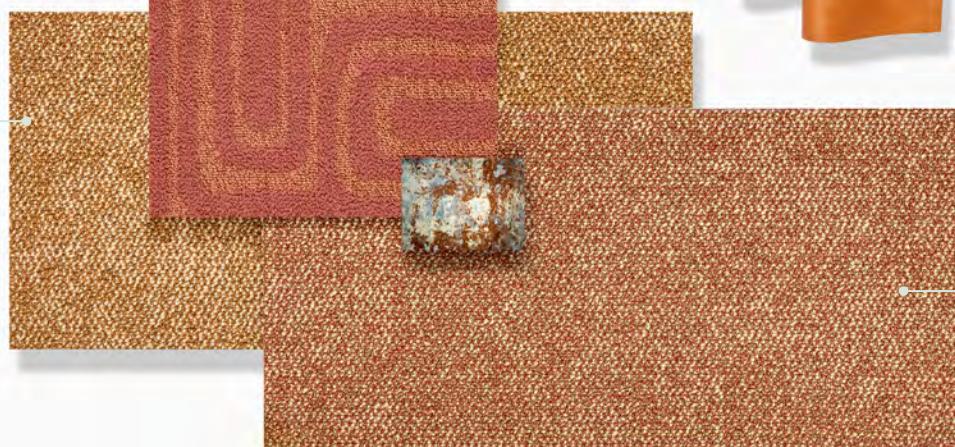


BANKSIA (57325) Draws inspiration from the verdant green tones of the distinctive banksia plant.

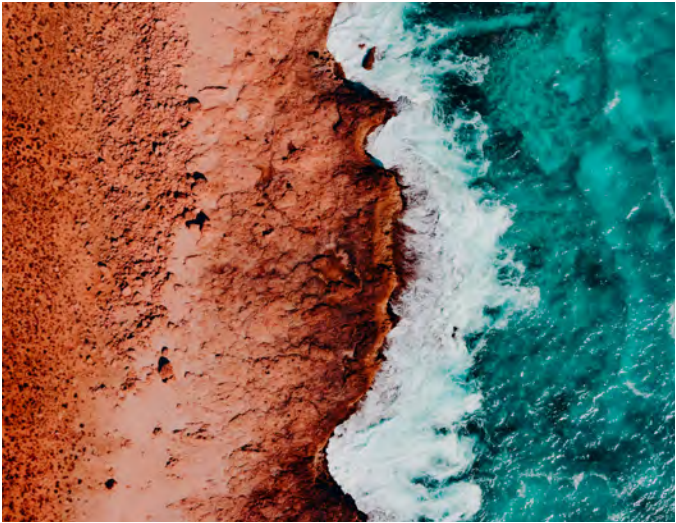
KIMBERLEY
COAST



GREAT SANDY
DESERT

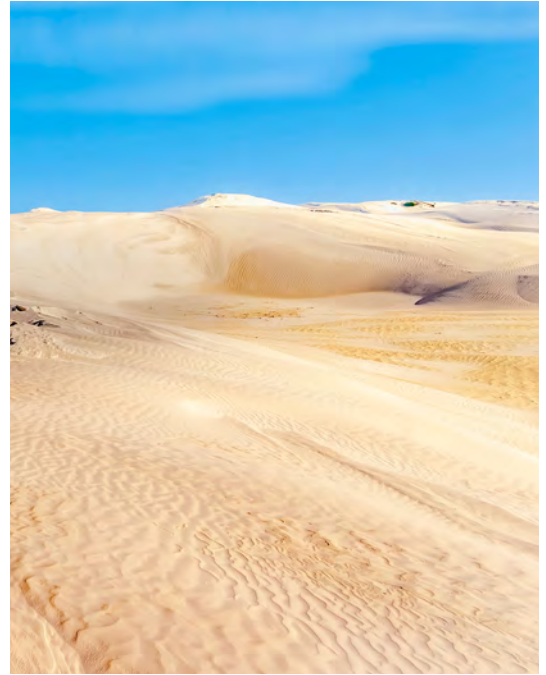


COOBER PEDY



KIMBERLEY COAST (57675)

Embodies the rich terracotta tones of the rugged Kimberley coastline.



GREAT SANDY DESERT (57679)

Captures the warm, earthy tones of Australia's vast desert landscapes, inspired by its sweeping sands and natural beauty.



COOBER PEDY (57676)

Reflects the breathtaking sunset hues of this iconic opal mining town.

GALAH (57800)
Inspired by the warm
blush tones of the
beloved Galah bird.



BAROSSA EARTH (57752) Reflects
the rich brown tones of the
fertile soils that shape Australia's
renowned Barossa wine region.

BURDEKIN PLUM (57880)
Embodies the red-purple
tones of the region's native
Burdekin plum.

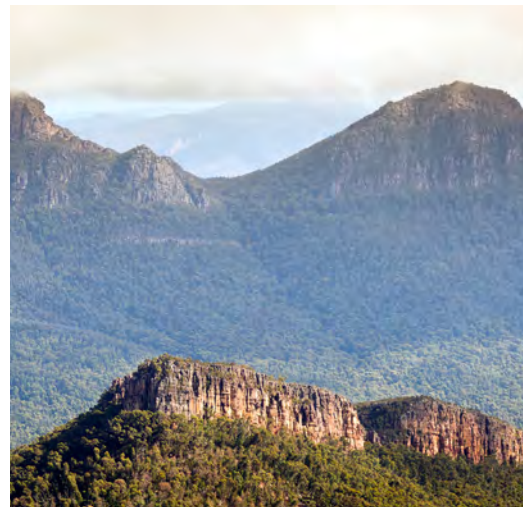
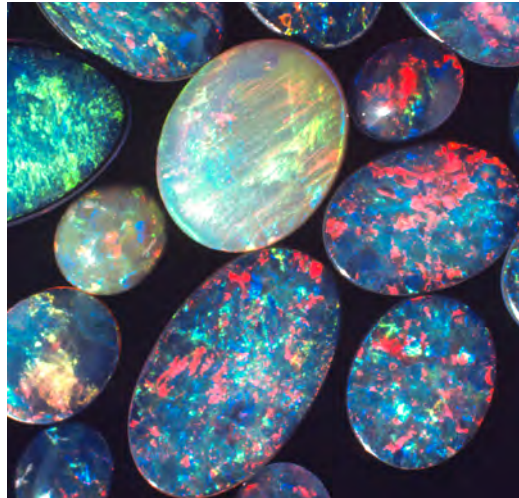
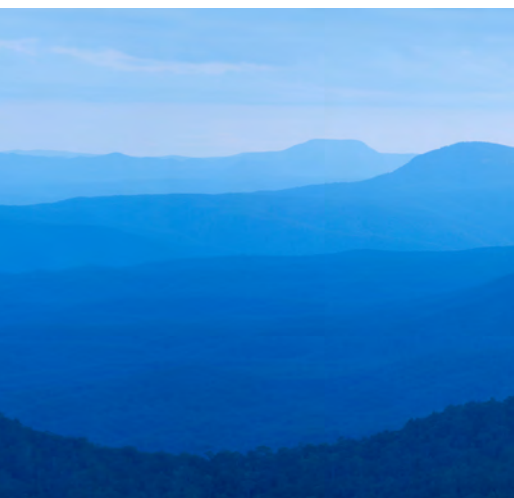


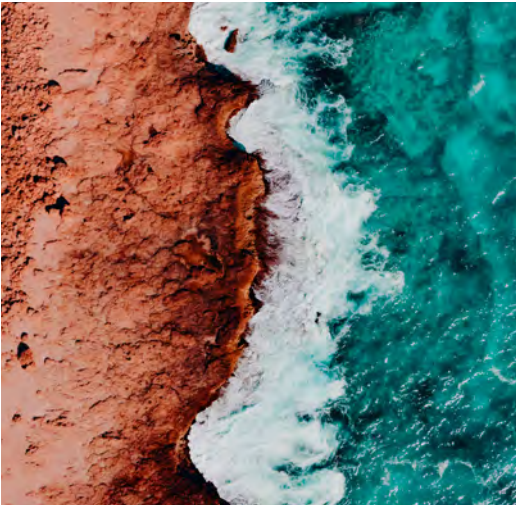


BURDEKIN
PLUM

GALAH

BAROSSA
EARTH





re[TURN] At the end of its useful life, we'll reclaim and recycle EcoWorx® backed carpet to make more EcoWorx® carpet products at no cost to you for a minimum.

EXTRUDED PELLETS

The shredded material is extruded into pellets that are used to make new carpet tile backing.

SHREDDED FIBRE & BACKING

Once the carpet tile is returned, it is processed at Shaw facilities, and the material is shredded into a mix of fibre and backing.



ECOWORX® CARPET TILE

Start the way you mean to finish.

Our 100% PVC-free backing is made from thermoplastic polyolefin compound engineered for performance & circularity. Beautiful, inside and out.

+

ECOSOLUTION Q100® FIBRE

EcoSolution Q100® is a high performance 100% recycled content nylon fibre*. Accent carpet tile styles are made with EcoSolution Q100® and have a low carbon footprint as reflected in the EC3 tool.

=

Low Embodied Carbon
Carbon Neutral

*Allocated from pre-consumer sources.



People Together, Planet Forever is our *promise*.
Neutral is Not Enough is our *call to action*.

We are one planet. We cannot afford to be neutral. We must make changes and take action together. We are design optimists.

MATERIAL HEALTH

Together, we design and manufacture products to optimise human environments.



Cradle to Cradle Certified® Silver

Accent carpet tiles are third-party verified as being safe, circular, and responsibly made. Cradle to Cradle Certified® is a recognised Product Certification Initiative within GBCA Green Star rating tools.



Indoor Air Quality

People spend 90% of their time indoors, making these environments critical to our wellbeing. Accent is Green Label Plus (GLP) Certified, which exceeds the GBCA's Green Star plus WELL Building Standard requirements for indoor air quality.



Product Transparency

Accent carpet tile styles have a Health Product Disclosure (HPD), which is a transparent disclosure of product content and associated health information.

Declare. LBD Red List Approved

Accent carpet tile styles are Living Building Challenge (LBC) Red List Approved. Proprietary ingredients are not disclosed on the Declare label.



Works with WELL Approved

EcoWorx® carpet tile is the first carpet solution globally to earn the Works with WELL license from the International WELL Building Institute.

CARBON IMPACT

Together, we are a positive force in the global effort to collectively fight climate change.



More than 50% Reduced Carbon Footprint

As a result of Shaw's investment to help reduce our energy and greenhouse gas impact, we have cut our scope 1 & 2 emissions by more than half since our 2010 baseline.



Low Embodied Carbon

Accent carpet tile styles have a third-party verified Environmental Product Declaration (EPD).



EcoSolution Q100® Reduces Carbon Impact

EcoSolution Q100® is a high performance 100% recycled content nylon fibre*. Accent carpet tile styles are made with EcoSolution Q100® and have a low carbon footprint as reflected in the EC3 tool.

*Allocated from pre-consumer sources.



Carbon Neutral

Accent carpet tile styles are carbon neutral and manufactured in a carbon neutral manufacturing facility.

CIRCULAR ECONOMY

Together, we practice a closed-loop approach to sustainability.



We Want it Back

At the end of its useful life, we'll reclaim and recycle Accent carpet tile styles to make more EcoWorx® carpet products through our Environmental Guarantee. Since 2006, Shaw has reclaimed and recycled over 450 million kilograms of post-consumer flooring reducing landfill waste.

DIVERSITY & INCLUSION

Together, we nurture an environment where every voice and perspective can be seen & heard.



Supplier Diversity Program

We promote supplier participation that is reflective of Shaw Industries' diverse customer base and local community. We believe having a strong network of partners is strategic for bringing more innovation to our businesses and opening new markets for growth.

