

Grounded Spaces

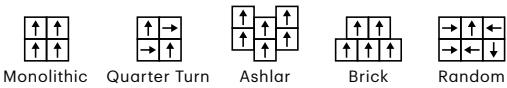


Specifications

Style Name Style Number	Stillness 5T684	Disconnect 5T685	Visualize 5T686
Cradle to Cradle Certified™ Construction Fiber Dye Method	Silver Level (v4.0) Multi-Level Pattern Loop EcoSolution Q100® Nylon 100% Solution Dyed	Silver Level (v4.0) Multi-Level Pattern Loop EcoSolution Q100® Nylon 100% Solution Dyed	Silver Level (v4.0) Multi-Level Pattern Loop EcoSolution Q100® Nylon 100% Solution Dyed
Average Density Tufted Weight Product Size Secondary Backing Warranty*	US Units 7,579 oz/yd³ 16.0 oz/yd² 24 in × 24 in EcoWorx® Tile Lifetime Commercial Limited	Metric Units 0.280 g/cm³ 542.5 g/m² 61 cm × 61 cm EcoWorx® Tile Lifetime Commercial Limited	US Units 7,579 oz/yd³ 16.0 oz/yd² 24 in × 24 in EcoWorx® Tile Lifetime Commercial Limited
US Units 7,579 oz/yd³ 16.0 oz/yd² 24 in × 24 in EcoWorx® Tile Lifetime Commercial Limited	Metric Units 0.280 g/cm³ 542.5 g/m² 61 cm × 61 cm EcoWorx® Tile Lifetime Commercial Limited	US Units 7,579 oz/yd³ 16.0 oz/yd² 24 in × 24 in EcoWorx® Tile Lifetime Commercial Limited	Metric Units 0.280 g/cm³ 542.5 g/m² 61 cm × 61 cm EcoWorx® Tile Lifetime Commercial Limited
Style Name Style Number	Earthing 5T687	Manifest 5T688	Alignment 5T689
Cradle to Cradle Certified™ Construction Fiber Dye Method	Silver Level (v4.0) Multi-Level Pattern Loop EcoSolution Q100® Nylon 100% Solution Dyed	Silver Level (v4.0) Multi-Level Pattern Loop EcoSolution Q100® Nylon 100% Solution Dyed	Silver Level (v4.0) Multi-Level Pattern Loop EcoSolution Q100® Nylon 100% Solution Dyed
Average Density Tufted Weight Product Size Secondary Backing Warranty*	US Units 7,579 oz/yd³ 16.0 oz/yd² 24 in × 24 in EcoWorx® Tile Lifetime Commercial Limited	Metric Units 0.280 g/cm³ 542.5 g/m² 61 cm × 61 cm EcoWorx® Tile Lifetime Commercial Limited	US Units 7,579 oz/yd³ 16.0 oz/yd² 24 in × 24 in EcoWorx® Tile Lifetime Commercial Limited
US Units 7,579 oz/yd³ 16.0 oz/yd² 24 in × 24 in EcoWorx® Tile Lifetime Commercial Limited	Metric Units 0.280 g/cm³ 542.5 g/m² 61 cm × 61 cm EcoWorx® Tile Lifetime Commercial Limited	US Units 7,579 oz/yd³ 16.0 oz/yd² 24 in × 24 in EcoWorx® Tile Lifetime Commercial Limited	Metric Units 0.280 g/cm³ 542.5 g/m² 61 cm × 61 cm EcoWorx® Tile Lifetime Commercial Limited
Style Name Style Number	Breathe 5T690	Presence 5T691	Meditate 5T692
Cradle to Cradle Certified™ Construction Fiber Dye Method	Silver Level (v4.0) Multi-Level Pattern Loop EcoSolution Q100® Nylon 100% Solution Dyed	Silver Level (v4.0) Multi-Level Pattern Loop EcoSolution Q100® Nylon 100% Solution Dyed	Silver Level (v4.0) Multi-Level Pattern Loop EcoSolution Q100® Nylon 100% Solution Dyed
Average Density Tufted Weight Product Size Secondary Backing Warranty*	US Units 7,579 oz/yd³ 16.0 oz/yd² 24 in × 24 in EcoWorx® Tile Lifetime Commercial Limited	Metric Units 0.280 g/cm³ 542.5 g/m² 61 cm × 61 cm EcoWorx® Tile Lifetime Commercial Limited	US Units 7,579 oz/yd³ 16.0 oz/yd² 24 in × 24 in EcoWorx® Tile Lifetime Commercial Limited
US Units 7,579 oz/yd³ 16.0 oz/yd² 24 in × 24 in EcoWorx® Tile Lifetime Commercial Limited	Metric Units 0.280 g/cm³ 542.5 g/m² 61 cm × 61 cm EcoWorx® Tile Lifetime Commercial Limited	US Units 7,579 oz/yd³ 16.0 oz/yd² 24 in × 24 in EcoWorx® Tile Lifetime Commercial Limited	Metric Units 0.280 g/cm³ 542.5 g/m² 61 cm × 61 cm EcoWorx® Tile Lifetime Commercial Limited

*For detailed warranty information visit [shawcontract.com](https://www.shawcontract.com).

Recommended Installation Methods



ShawContract®



LOW EMBODIED CARBON | CARBON NEUTRAL



Grounded Spaces

ShawContract®

Grounded *In* Space

To be grounded in a space is to be connected to the earth beneath us — to the people who surround us. Introducing ***Grounded Spaces***, a collection of carpet tiles grounded in **affordability, performance, sustainability, quick delivery and design.**



VISUALIZE
Fractured lines create an irregular shift of organic forms in this medium-scale design.



PRESENCE
An organic vibe is balanced by structural elements in this non-directional design.



MEDITATE

Evoke the reflective warmth of a fine-knit textile in this small-scale pattern.

Performance

The high-performance carpet tiles you trust featuring **EcoSolutionQ100™** fiber with our **EcoWorx®** backing at a price that fits your budget.

Grounded *In Affordability*

Design

A modern wellness aesthetic, **Grounded Spaces** is designed with a range of patterns that stand alone or mix and match with a variety of Shaw Contract collections to ground your space.

Sustainability

Create a sense of calm and wellbeing, even in the most high-traffic areas. All styles in the **Grounded Spaces** collection are **Low Embodied Carbon** and **Carbon Neutral**. Good for people and the planet.



STILLNESS

A mix of pattern and texture that's inspired by classic, woven fabric. An ever-evolving narrative of energy and calm.

ABOVE: **STILLNESS (CARPET TILE 5T684)** IN OAT (62518) | INSTALLED MONOLITHIC
RIGHT: **STILLNESS (CARPET TILE 5T684)** IN OAT (62518) + **CLASSIC (CARPET TILE 5T648)** IN LINEN (48105) | INSTALLED MONOLITHIC





STILLNESS 5T684

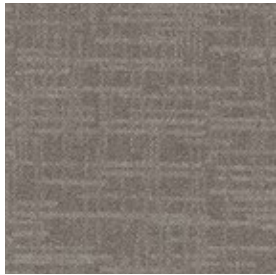
61 cm x 61 cm (24 in x 24 in)



flax 62105



tawny 62109



sand 62111



leather 62500



sisal 62501



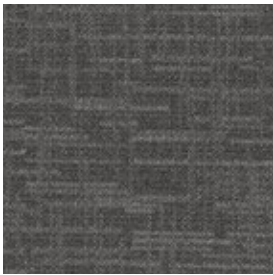
quilt 62505



oat 62518



stone 62530



natural 62585

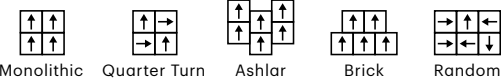


brown 62750

SPECIFICATION

Style Name	Stillness Tile
Style Number	5T684
Construction	Multi-Level Pattern Loop
Fiber	EcoSolution Q100® Nylon
Dye Method	100% Solution Dyed
Tufted Weight	16.0 oz/yd² (542.5 g/m²)
Product Size	24 in × 24 in (61 cm × 61 cm)
Secondary Backing	EcoWorx® Tile
Warranty	Lifetime Commercial Limited

Installation

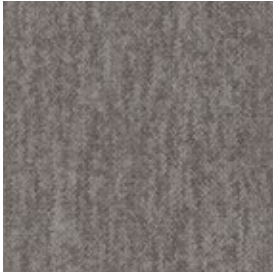


STILLNESS (CARPET TILE 5T684) IN OAT (62518) | INSTALLED MONOLITHIC



DISCONNECT 5T685

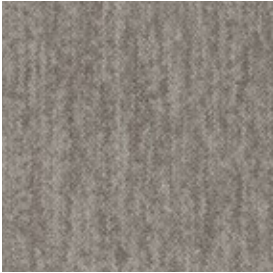
61 cm x 61 cm (24 in x 24 in)



flax 62105



tawny 62109



sand 62111



leather 62500



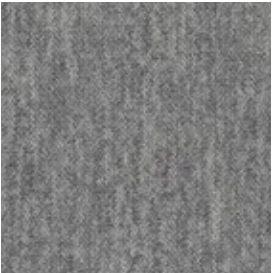
sisal 62501



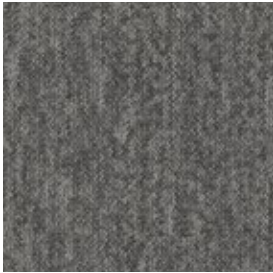
quilt 62505



oat 62518



stone 62530



natural 62585



brown 62750

SPECIFICATION

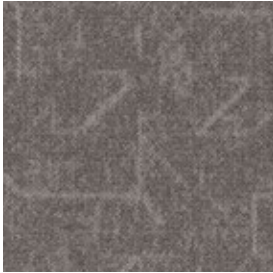
Style Name	Stillness Tile	<div>Installation</div> <div><div><div>↑↑</div><div>↑↑</div></div><div>Monolithic</div></div> <div><div><div>↑↑</div><div>→↑</div></div><div>Quarter Turn</div></div> <div><div><div>↑↑</div><div>↑↑</div></div><div>Ashlar</div></div> <div><div><div>↑↑↑↑</div><div>↑↑↑↑</div></div><div>Brick</div></div> <div><div><div>→↑↑</div><div>←↑↑</div></div><div>Random</div></div>
------------	----------------	--

DISCONNECT (CARPET TILE 5T685) IN STONE (62530) | INSTALLED MONOLITHIC



VISUALIZE 5T686

61 cm x 61 cm (24 in x 24 in)



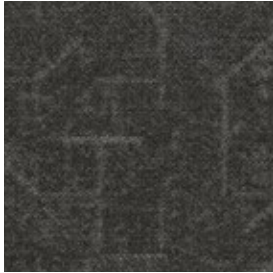
flax 62105



tawny 62109



sand 62111



leather 62500



sisal 62501



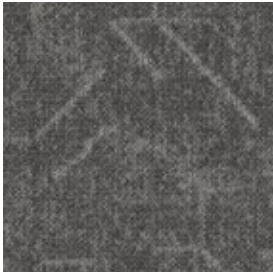
quilt 62505



oat 62518



stone 62530



natural 62585



brown 62750

SPECIFICATION

Style Name	Visualize	Installation		
Style Number	5T686			
Construction	Multi-Level Pattern Loop			
Fiber	EcoSolution Q100® Nylon			
Dye Method	100% Solution Dyed			
Tufted Weight	16.0 oz/yd² (542.5 g/m²)			
Product Size	24 in × 24 in (61 cm × 61 cm)			
Secondary Backing	EcoWorx® Tile			
Warranty	Lifetime Commercial Limited			



VISUALIZE (CARPET TILE 5T686) IN STONE (62530) | INSTALLED MONOLITHIC



EARTHING 5T687

61 cm x 61 cm (24 in x 24 in)



flax 62105



tawny 62109



sand 62111



leather 62500



sisal 62501



quilt 62505



oat 62518



stone 62530



natural 62585

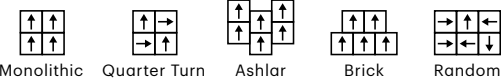


brown 62750

SPECIFICATION

Style Name	Earthing
Style Number	5T687
Construction	Multi-Level Pattern Loop
Fiber	EcoSolution Q100® Nylon
Dye Method	100% Solution Dyed
Tufted Weight	16.0 oz/yd² (542.5 g/m²)
Product Size	24 in × 24 in (61 cm × 61 cm)
Secondary Backing	EcoWorx® Tile
Warranty	Lifetime Commercial Limited

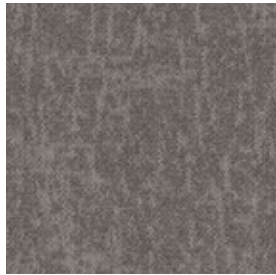
Installation





MANIFEST 5T688

61 cm x 61 cm (24 in x 24 in)



flax 62105



tawny 62109



sand 62111



leather 62500



sisal 62501



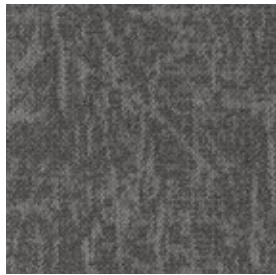
quilt 62505



oat 62518



stone 62530



natural 62585

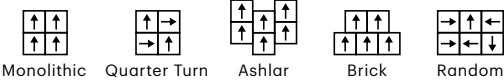


brown 62750

SPECIFICATION

Style Name	Manifest
Style Number	5T688
Construction	Multi-Level Pattern Loop
Fiber	EcoSolution Q100® Nylon
Dye Method	100% Solution Dyed
Tufted Weight	16.0 oz/yd² (542.5 g/m²)
Product Size	24 in × 24 in (61 cm × 61 cm)
Secondary Backing	EcoWorx® Tile
Warranty	Lifetime Commercial Limited

Installation

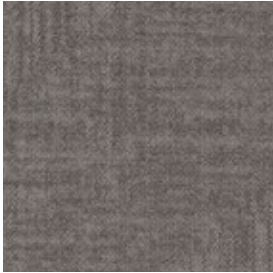


MANIFEST (CARPET TILE 5T688) IN SISAL (62501) | INSTALLED MONOLITHIC



ALIGNMENT 5T689

61 cm x 61 cm (24 in x 24 in)



flax 62105



tawny 62109



sand 62111



leather 62500



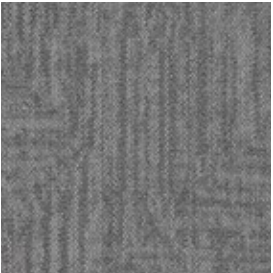
sisal 62501



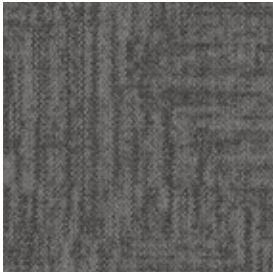
quilt 62505



oat 62518



stone 62530



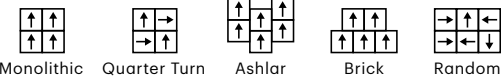
natural 62585



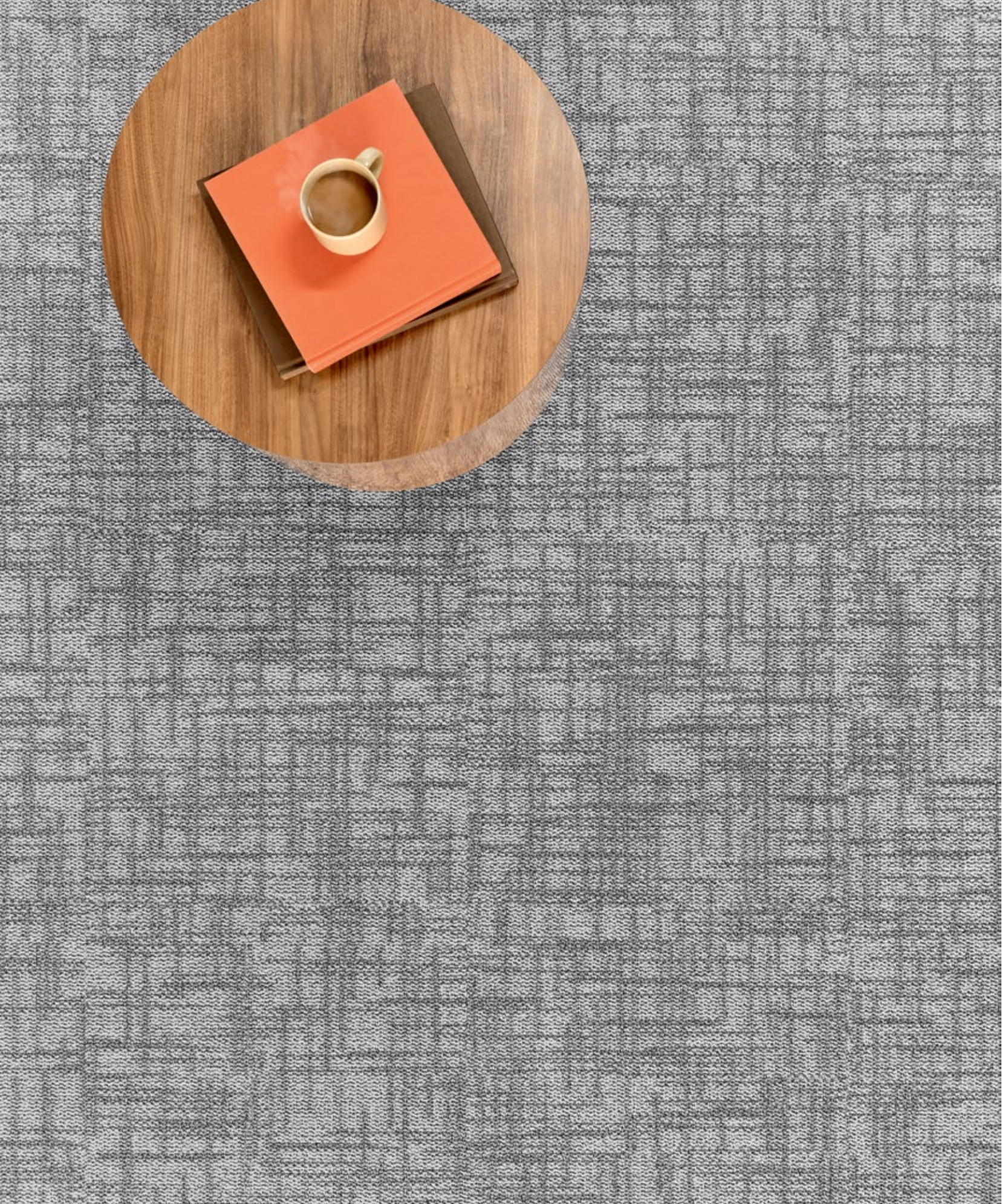
brown 62750

SPECIFICATION

Style Name	Alignment	Installation
Style Number	5T689	
Construction	Multi-Level Pattern Loop	
Fiber	EcoSolution Q100® Nylon	
Dye Method	100% Solution Dyed	
Tufted Weight	16.0 oz/yd² (542.5 g/m²)	
Product Size	24 in × 24 in (61 cm × 61 cm)	
Secondary Backing	EcoWorx® Tile	
Warranty	Lifetime Commercial Limited	

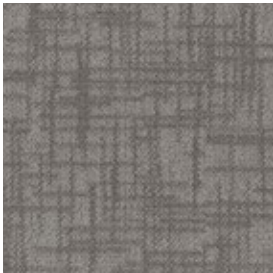


ALIGNMENT (CARPET TILE 5T689) IN OAT (62518) | INSTALLED MONOLITHIC



BREATHE 5T690

61 cm x 61 cm (24 in x 24 in)



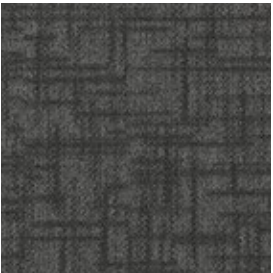
flax 62105



tawny 62109



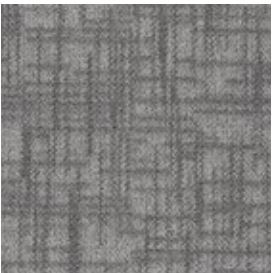
sand 62111



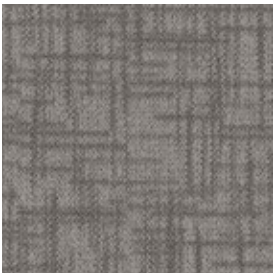
leather 62500



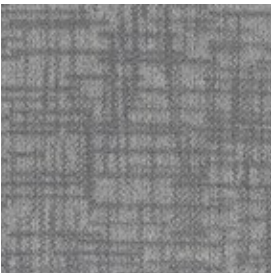
sisal 62501



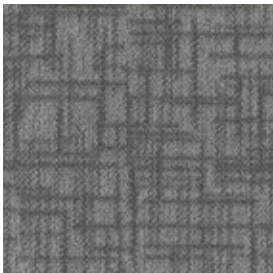
quilt 62505



oat 62518



stone 62530



natural 62585

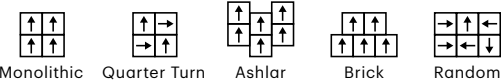


brown 62750

SPECIFICATION

Style Name	Breathe
Style Number	5T690
Construction	Multi-Level Pattern Loop
Fiber	EcoSolution Q100® Nylon
Dye Method	100% Solution Dyed
Tufted Weight	16.0 oz/yd² (542.5 g/m²)
Product Size	24 in × 24 in (61 cm × 61 cm)
Secondary Backing	EcoWorx® Tile
Warranty	Lifetime Commercial Limited

Installation





PRESENCE 5T691

61 cm x 61 cm (24 in x 24 in)



flax 62105



tawny 62109



sand 62111



leather 62500



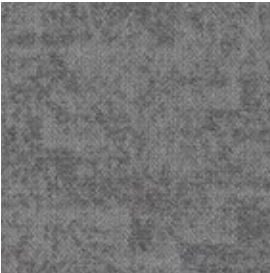
sisal 62501



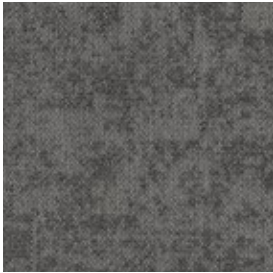
quilt 62505



oat 62518



stone 62530



natural 62585

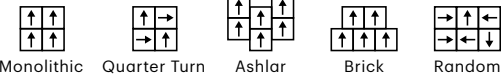


brown 62750

SPECIFICATION

Style Name	Presence
Style Number	5T691
Construction	Multi-Level Pattern Loop
Fiber	EcoSolution Q100® Nylon
Dye Method	100% Solution Dyed
Tufted Weight	16.0 oz/yd² (542.5 g/m²)
Product Size	24 in × 24 in (61 cm × 61 cm)
Secondary Backing	EcoWorx® Tile
Warranty	Lifetime Commercial Limited

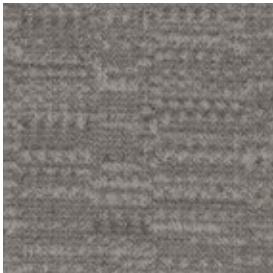
Installation





MEDITATE 5T692

61 cm x 61 cm (24 in x 24 in)



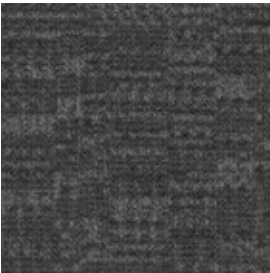
flax 62105



tawny 62109



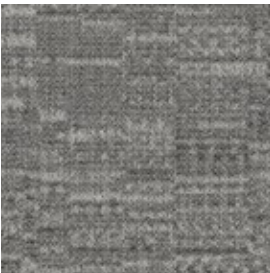
sand 62111



leather 62500



sisal 62501



quilt 62505



oat 62518



stone 62530



natural 62585

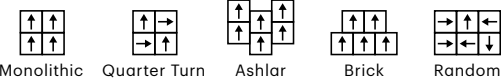


brown 62750

SPECIFICATION

Style Name	Meditate
Style Number	5T692
Construction	Multi-Level Pattern Loop
Fiber	EcoSolution Q100® Nylon
Dye Method	100% Solution Dyed
Tufted Weight	16.0 oz/yd² (542.5 g/m²)
Product Size	24 in × 24 in (61 cm × 61 cm)
Secondary Backing	EcoWorx® Tile
Warranty	Lifetime Commercial Limited

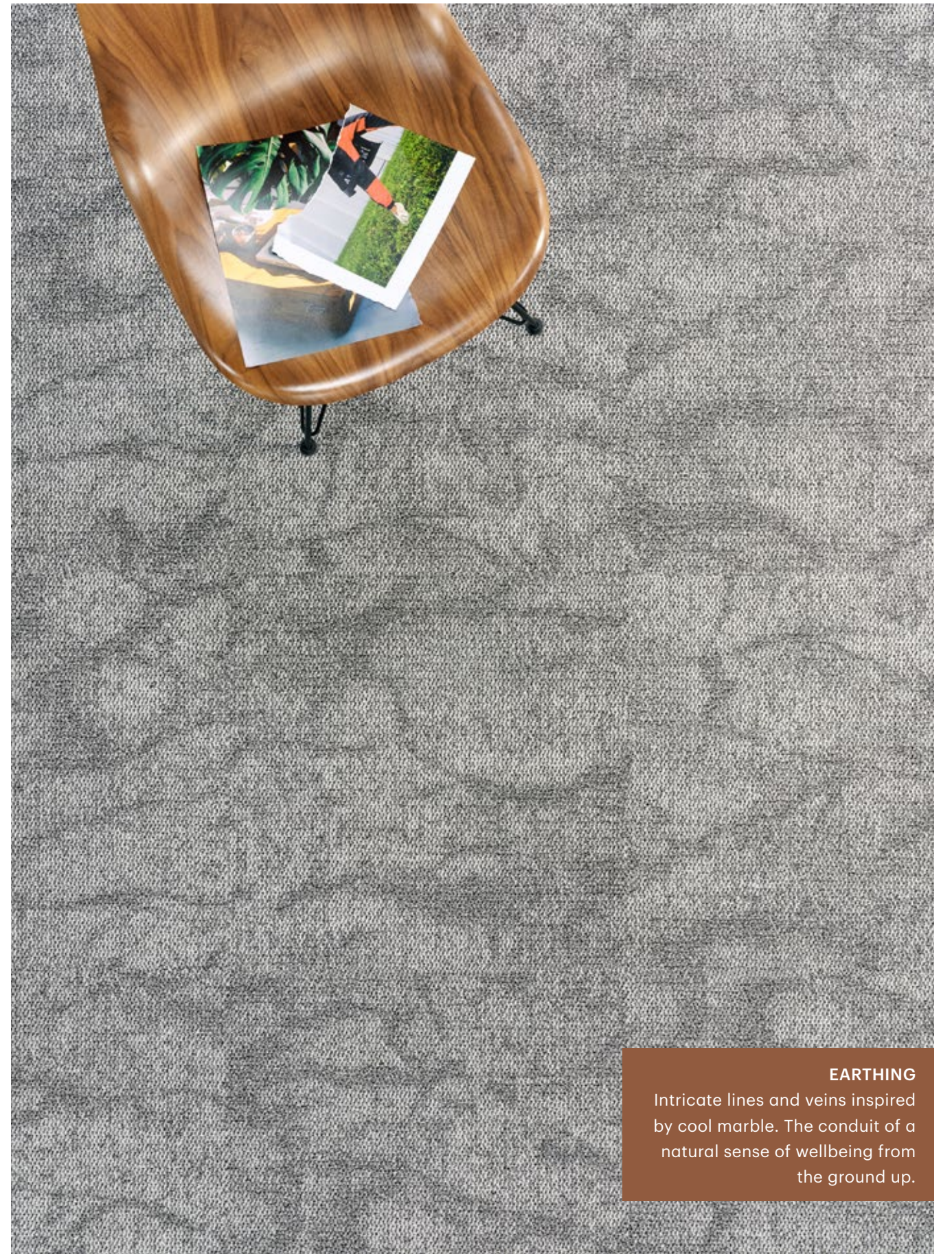
Installation



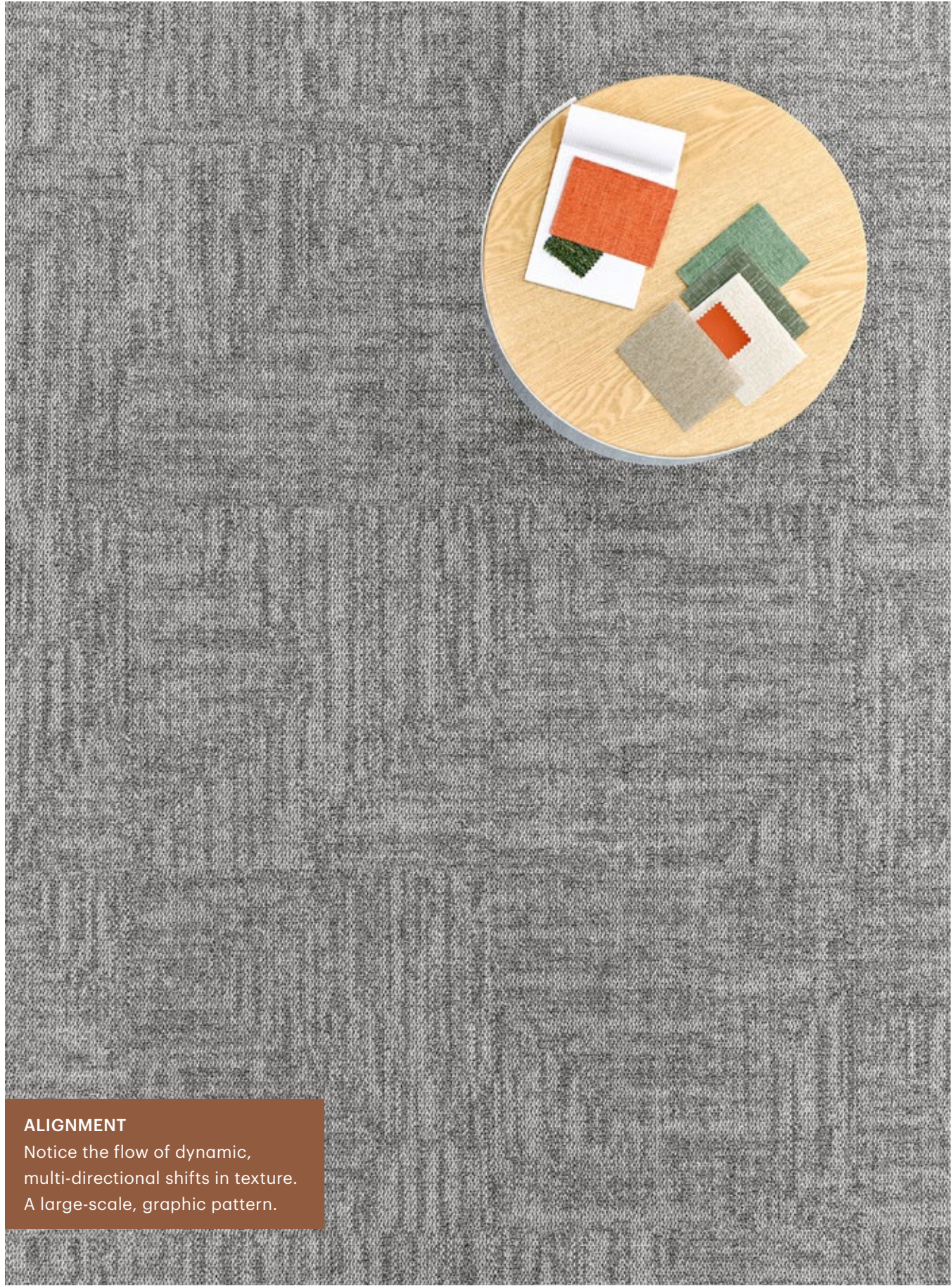


02 Grounded Moment: Spaces that bring us together for a common purpose—to collaborate, to meditate, to heal.

BREATHE
Elevate interior style with this classic, medium-scale plaid texture.



EARTHING
Intricate lines and veins inspired
by cool marble. The conduit of a
natural sense of wellbeing from
the ground up.



ALIGNMENT

Notice the flow of dynamic, multi-directional shifts in texture. A large-scale, graphic pattern.

ABOVE AND RIGHT: **ALIGNMENT (CARPET TILE 5T689)** IN OAT (62518) | INSTALLED MONOLITHIC





MANIFEST (CARPET TILE 5T688) IN OAT (62518) + SISAL (62501) | INSTALLED MONOLITHIC

MANIFEST
Reflect the intentional energy of nature in a pattern that effortlessly adapts to any interior space.

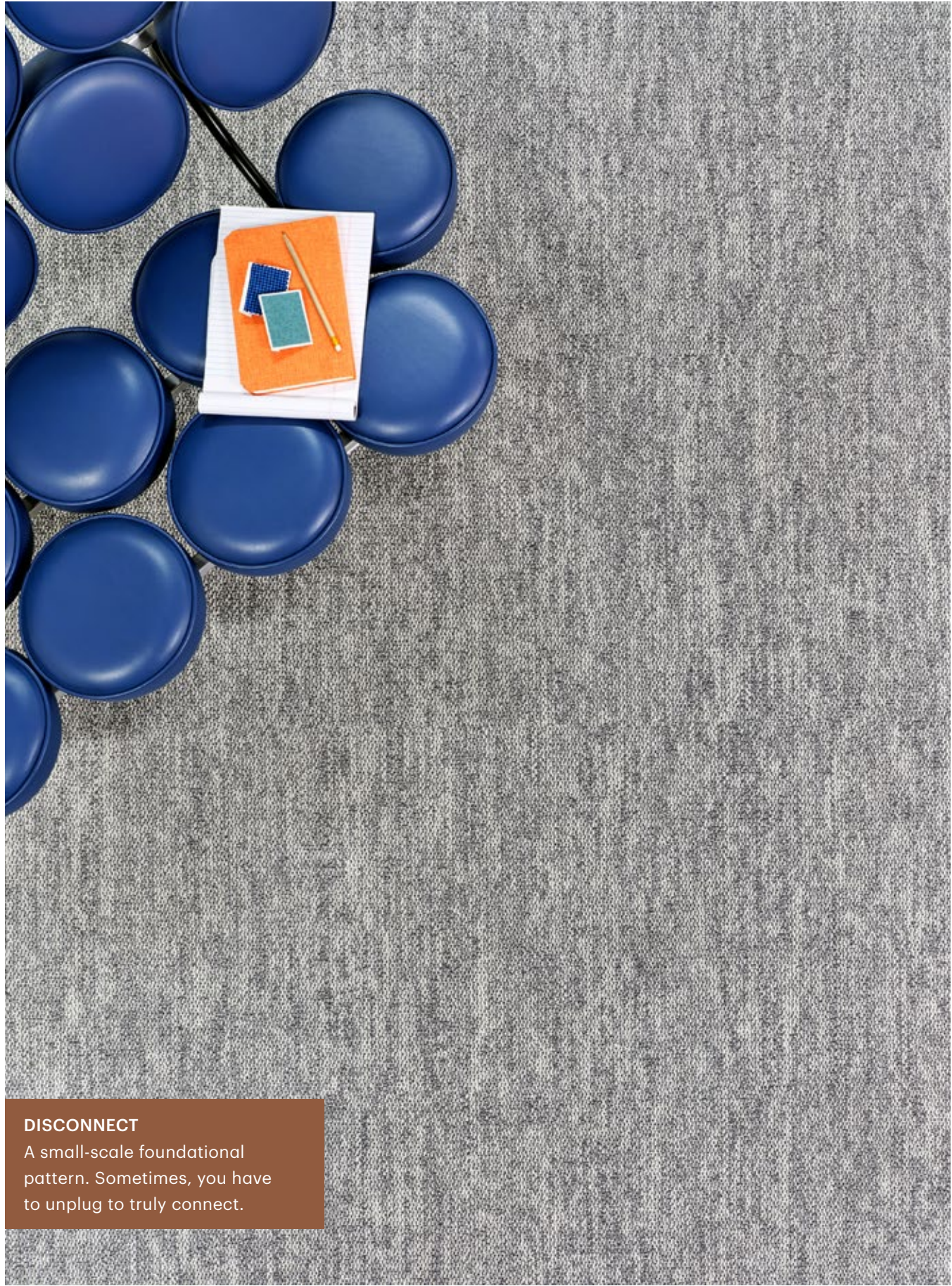
What does it mean *to be*

Grounding is connecting to the Earth, to the moment and to those around us. Standing barefoot in the grass, wading in the ocean or climbing a tree — it's what we instinctively know as humans.

The ***Grounded Spaces*** collection encourages connection—balancing and grounding your space and those who inhabit it.

Grounded?



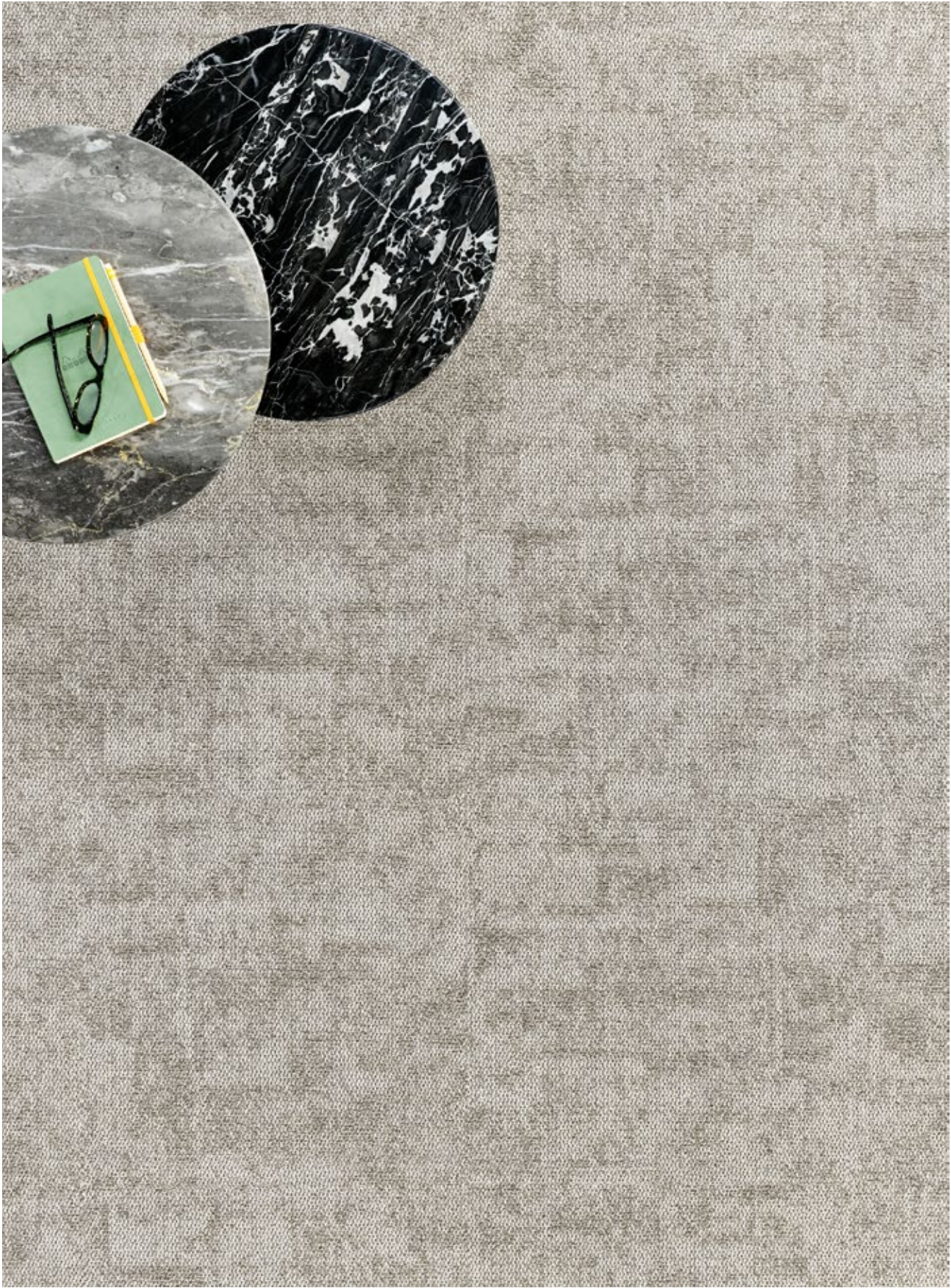


DISCONNECT

A small-scale foundational pattern. Sometimes, you have to unplug to truly connect.

ABOVE: **DISCONNECT (CARPET TILE 5T685)** IN **STONE (62530)** | INSTALLED MONOLITHIC
 RIGHT: **DISCONNECT (CARPET TILE 5T685)** IN **STONE (62530)** AND **PIERRE (CARPET TILE 5T631)** IN **LEGACY (31323)** | INSTALLED MONOLITHIC





People Together, Planet Forever is our **promise**.
Neutral is not enough is our **call to action**.

We are one planet. We cannot afford to be neutral. We must make changes and take action together. *Together*, we are **Design Optimists**.

MATERIAL HEALTH

Together, we design and manufacture products to optimize human environments.



Cradle to Cradle Certified® Silver

Grounded Spaces carpet tile styles are third-party verified as being safe, circular, and responsibly made.



Indoor Air Quality

People spend 90% of their time indoors, making these environments critical to our wellbeing. These products are Green Label Plus (GLP) Certified, meeting the California Department of Public Health (CDPH) indoor air quality standards for low-emitting products.



Product Transparency

Grounded Spaces carpet tile styles have a Health Product Disclosure (HPD), which is a transparent disclosure of product content and associated health information.



LBC Red List Approved

Grounded Spaces carpet tile styles are Living Building Challenge (LBC) Red List Approved. Proprietary ingredients are not disclosed on the Declare label; however, all raw materials have been third-party confirmed as being compliant with LBC Red List.

CARBON IMPACT

Together, we are a positive force in the global effort to collectively fight climate change.



More Than 50% Reduced Carbon Footprint

As a result of Shaw's investments to help reduce our energy and greenhouse gas impact, we have cut our Scope 1 & 2 emissions by more than half since our 2010 baseline.



Low Embodied Carbon

Grounded Spaces carpet tile styles have a third-party verified Environmental Product Declaration (EPD).



EcoSolution Q100® Reduces Carbon Impact

EcoSolution Q100® is a high performance 100% recycled content nylon fiber*. *Grounded Spaces* carpet tile styles are made with EcoSolution Q100® and have a low carbon footprint as reflected in the EC3 tool.

*Allocated from pre-consumer sources.



Carbon Neutral

Grounded Spaces carpet tile styles are carbon neutral and manufactured in a carbon neutral manufacturing facility.

CIRCULAR ECONOMY

Together, we practice a closed-loop approach to sustainability.



We Want it Back

At the end of its useful life, we'll reclaim and recycle *Grounded Spaces* carpet tile styles to make more EcoWorx® carpet products through our Environmental Guarantee. Since 2006, Shaw has reclaimed and recycled nearly 1 billion pounds of post-consumer carpet reducing landfill waste.

DIVERSITY, EQUITY & INCLUSION

Together, we nurture an environment where every voice and perspective can be heard, with equal value placed on seen and unseen experiences.



Supplier Diversity Program

We promote supplier participation that is reflective of Shaw Industries' diverse customer base and local community. More than 75% of our spend* is with small and diverse businesses. We believe having a strong Supplier Diversity Program is strategic for bringing more innovation to our businesses and opening new markets for growth.

*Allowable spend is domestic (U.S.) spend in categories in which we have diverse suppliers from which we choose.