



LOW EMBODIED CARBON | CARBON NEUTRAL



# Local Landscapes

**ShawContract®**





# Reflect your Local Landscape, wherever it may be.

*Local Landscapes* echoes the natural biomes found throughout the world and stands as a reminder that we don't just inhabit this world. We are part of it.

This collection is inspired by the world outside your door and our collective desire to bring the outdoors inside, and all the ways you design spaces to with nature—not against it.

*Local Landscapes* is a carpet tile collection manufactured with EcoSolution Q100™, a high performance 100% recycled content nylon fiber, allocated from pre-consumer sources. Products with EcoSolution Q100™ are optimized for low embodied carbon and are carbon neutral.



COVER: **LANDSCAPE (CARPET TILE 5T604)** IN COASTAL (04105) + COASTAL SAND (04668) AND **ELEMENT (CARPET TILE 5T605)** IN COASTAL (04105) + COASTAL SAND (04668) AND **MIGRATE (CARPET TILE 5T606)** IN COASTAL SAND (04668) | INSTALLED CUSTOM MONOLITHIC  
ABOVE: **MIGRATE (CARPET TILE 5T606)** IN COASTAL SAND (04668) | INSTALLED STAGGER





**LANDSCAPE**

An abstract organic pattern ebbs and flows in *Landscape* tile. Understated texture meets foundational softness in any local landscape.

ABOVE: LANDSCAPE (CARPET TILE 5T604) IN COASTAL (04105) | INSTALLED STAGGER  
 RIGHT: LANDSCAPE (CARPET TILE 5T604) IN COASTAL (04105) + COASTAL SAND (04668) | INSTALLED STAGGER







Explore innovative  
installation ideas inspired  
by global landscapes.



#### ELEMENT

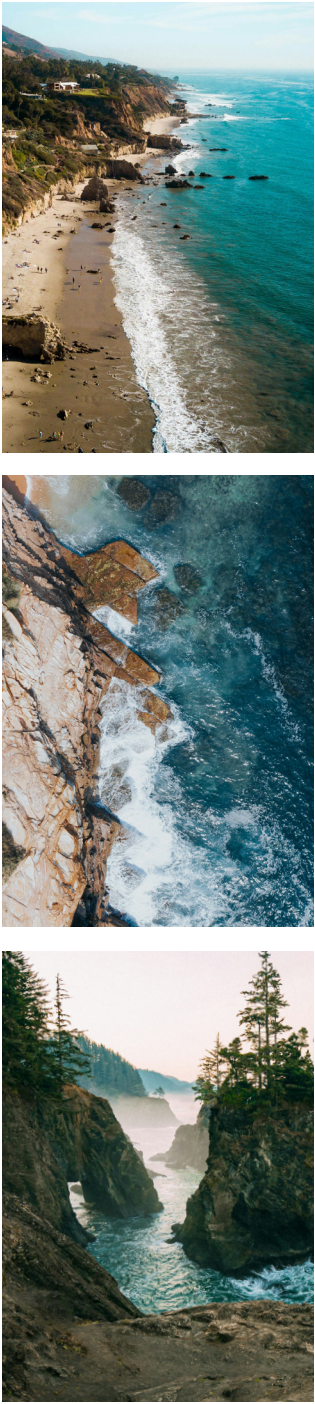
The soft, organic nature of *Element* tile  
offers a textural foundation. Subtle,  
near-solid neutrals accentuated  
with soft, flowing accents create  
movement in any space.

ABOVE: ELEMENT (CARPET TILE 5T605) IN COASTAL (04105) | INSTALLED STAGGER  
LEFT: LANDSCAPE (CARPET TILE 5T604) IN COASTAL (04105) + COASTAL SAND (04668) AND ELEMENT (CARPET TILE 5T605) IN  
COASTAL (04105) + COASTAL SAND (04668) AND MIGRATE (CARPET TILE 5T606) IN COASTAL SAND (04668) | INSTALLED CUSTOM MONOLITHIC



COAST

Where earth meets water. Rugged cliffs, sandy beaches and salt marsh coastlines connect with oceans, lakes and sea.



GRASSLAND

Elysian fields, amber waves, open prairies, a solitary tree. Tall grasses standing together as far as the eye can see.





DESERT

The hottest days. The coldest nights. Vast, ephemeral horizons.  
Dunes, rugged canyons and oasis.



DESERT BIOME IN COLOURS DESERT (04518) + DESERT OASIS (04327)  
+ DESERT CLAY (04675) + OASIS (04327) + CLAY (04675)

FOREST

Temperate, boreal, tropical. Cool and primeval. Cleaning the air.  
Breathing life into the ground below.



FOREST BIOME IN COLOURS FOREST (04585) + FOREST CANOPY (04323)  
+ FOREST REDWOOD (04850) + CANOPY (04323) + REDWOOD (04850)



MOUNTAIN

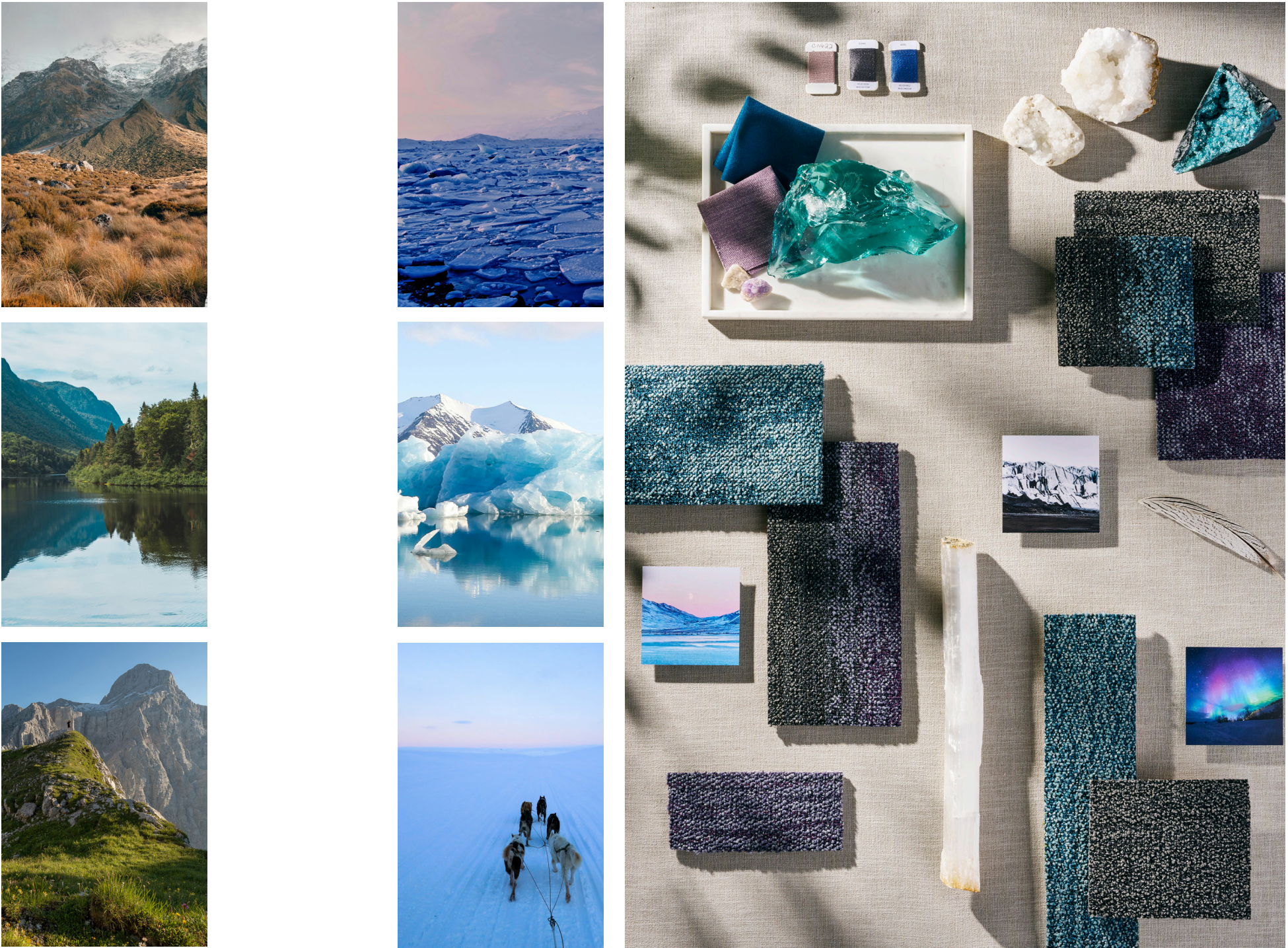
Everchanging elevation creates changes in the air and underfoot.  
Ancient rock, reaching the sky in a long goodbye to the sea.



MOUNTAIN BIOME IN COLOURS MOUNTAIN (04580) + MOUNTAIN MOSS (04375)  
+ MOUNTAIN LAKE (04486) + MOSS (04375) + LAKE (04486)

ARCTIC

Polar opposites attract. Glacial ice gives way to water.  
In the coldest of the cold, resiliency endures.



ARCTIC BIOME IN COLOURS ARCTIC (04505) + ARCTIC GLACIER (04485)  
+ ARCTIC TUNDRA (04979) + GLACIER (04485) + AURORA (04979)



**re[TURN]** At the end of its useful life, we'll reclaim and recycle EcoWorx® backed carpet to make more EcoWorx® carpet products at no cost to you for a minimum.

**EXTRUDED PELLETS**

The shredded material is extruded into pellets that are used to make new carpet tile backing.

**SHREDDED FIBER & BACKING**

Once the carpet tile is returned, it is processed at Shaw facilities, and the material is shredded into a mix of fiber and backing.



**ECOWORX® CARPET TILE**

Start the way you mean to finish. Our 100% PVC-free backing is made from thermoplastic polyolefin compound engineered for performance & circularity. Beautiful, inside and out.

+

**ECOSOLUTION Q100™ FIBER**

EcoSolution Q100™ is a high performance 100% recycled content nylon fiber\*. Local Landscapes carpet tile styles are made with EcoSolution Q100™ and have a low carbon footprint as reflected in the EC3 tool.

=

Low Embodied Carbon  
Carbon Neutral

\*Allocated from pre-consumer sources.



People Together, Planet Forever is our **promise**.  
Neutral is not enough is our **call to action**.

We are one planet. We cannot afford to be neutral. We must make changes and take action together. We are design optimists.

**MATERIAL HEALTH**

*Together*, we design and manufacture products to optimize human environments.



**Cradle to Cradle Certified® Silver**

Local Landscapes carpet tile styles are third-party verified as being safe, circular, and responsibly made.



**Indoor Air Quality**

People spend 90% of their time indoors, making these environments critical to our wellbeing. These products are Green Label Plus (GLP) Certified, meeting the California Department of Public Health (CDPH) indoor air quality standards for low-emitting products.



**Product Transparency**

Local Landscapes carpet tile styles have an HPD, which is a transparent disclosure of product content and associated health information.



**LBC Red List Approved**

Local Landscapes carpet tile styles are Living Building Challenge (LBC) Red List Approved. Proprietary ingredients are not disclosed on the Declare label; however, all raw materials have been third-party confirmed as being compliant with LBC Red List.

**CARBON IMPACT**

*Together*, we are a positive force in the global effort to collectively fight climate change.



**More Than 50% Reduced Carbon Footprint**

As a result of Shaw's investments to help reduce our energy and greenhouse gas impact, we have cut our Scope 1 & 2 emissions by more than half since our 2010 baseline.



**Low Embodied Carbon**

Local Landscapes carpet tile styles have a 3rd partyverified EPD.



**EcoSolution Q100™ Reduces Carbon Impact**

EcoSolution Q100™ is a high performance 100% recycled content nylon fiber\*. Local Landscapes carpet tile styles are made with EcoSolution Q100™ and have a low carbon footprint as reflected in the EC3 tool.

\*Allocated from pre-consumer sources.



**Carbon Neutral**

Local Landscapes carpet tile styles are carbon neutral and manufactured in a carbon neutral manufacturing facility.

**CIRCULAR ECONOMY**

*Together*, we practice a regenerative, closed-loop approach to sustainability.



**We Want it Back**

At the end of its useful life, we'll reclaim and recycle Local Landscapes carpet tile styles to make more EcoWorx® carpet products through our Environmental Guarantee. Since 2006, Shaw has reclaimed and recycled nearly 1 billion pounds of post-consumer carpet reducing landfill waste.

**DIVERSITY, EQUITY & INCLUSION**

*Together*, we nurture an environment where every voice and perspective can be heard, with equal value placed on seen and unseen experiences.



**Supplier Diversity Program**

We promote supplier participation that is reflective of Shaw Industries' diverse customer base and local community. More than 60% of our spend\* is with small and diverse businesses. We believe having a strong Supplier Diversity Program is strategic for bringing more innovation to our businesses and opening new markets for growth.

\*Allowable spend is domestic (US) spend in categories in which we have diverse suppliers from which we choose.



