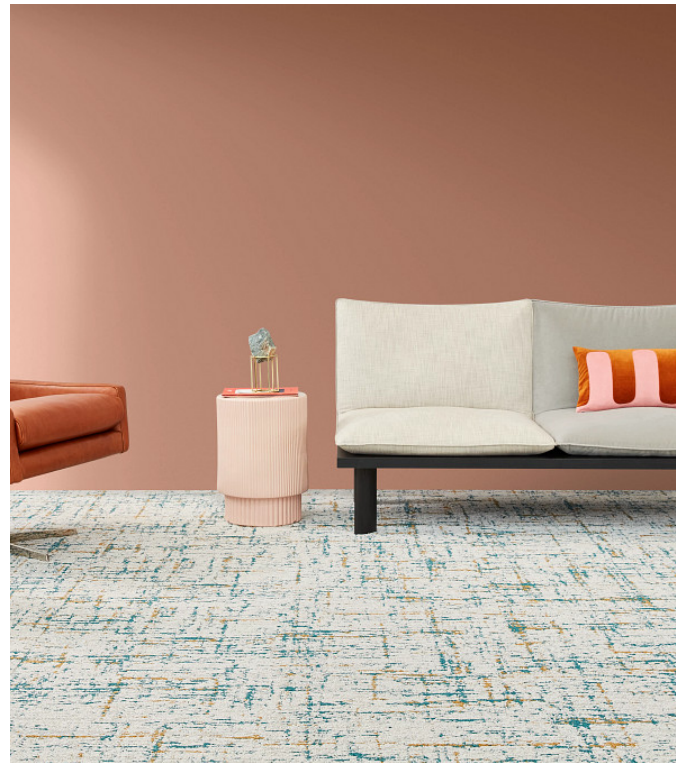


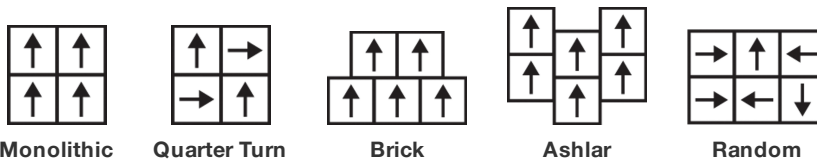
## Zest Tile

Product Type	<b>Carpet Tile</b>
Collection	<b>West Elm + Shaw Contract</b>
Style Number	<b>5T487</b>
Construction	<b>Multi-Level Pattern Loop</b>
Fiber	<b>Ecosolution Q100™ Nylon</b>
Dye Method	<b>100% Solution Dyed</b>
Primary Backing	<b>Synthetic</b>
Secondary Backing	<b>Ecworx® Tile</b>
Protective Treatments	<b>SSP® Shaw Soil Protection</b>
Recommended Adhesive	<b>LokDots, 3000 Carpet Tile 1 Gallon, 4151 Multi-Use Carpet Tile 4 Gallon, 5000 Carpet Tile 1 Gallon, LokWorx Adhesive Tabs, 3800 Indoor Outdoor Carpet Tile 4 Gallon, 5000 Carpet Tile 4 Gallon or 3000 Carpet Tile 4 Gallon</b>



	u.s.	metric
Product Size	<b>24 in x 24 in</b>	<b>61 cm x 61 cm</b>
Area Per Carton	<b>48 ft<sup>2</sup></b>	<b>4.46 m<sup>2</sup></b>
Pieces Per Carton	<b>12 pcs</b>	
Gauge	<b>1/10 in</b>	<b>39.4 per 10 cm</b>
Stitches	<b>7.0 per in</b>	<b>28.5 per 10 cm</b>
Average Density	<b>5814 oz/yd<sup>3</sup></b>	<b>0.215 g/cm<sup>3</sup></b>
Total Thickness	<b>0.320 in</b>	<b>8.13 mm</b>
Tufted Weight	<b>26 oz/yd<sup>2</sup></b>	<b>881.5 g/m<sup>2</sup></b>

### Recommended Installation Method



### Data + Testing

Radiant Panel	<b>Class I</b>
Nbs Smoke	<b>Less Than 450</b>
Electrostatic Propensity	<b>Less Than 3.5 kv</b>
Cri Green Label Plus (Glp)	<b>GLP9968</b>
Pill Test	<b>Pass*</b>
Ada Compliance	<b>&gt;0.6, Meets the recommended static coefficient of friction for ADA walking surfaces and accessible routes***</b>

Test Reports may be included or listed by the manufacturing/inventory style number as opposed to the noted selling style number.

### Warranties

Lifetime Commercial Limited

## Coordinating Products

Carpet Tile: **Stonework Tile, Chisel Tile, Grit Tile, Zeal Tile, Spark Tile**

Broadloom: **Verve, Colca, Kista By Lindsay Stead, Stone, Flame, Shale, Diamonds**

## Material Health & Environmental Certifications

Certifications Below Apply Exclusively To The Carpet Tile Rug Itself And Not The Lokworx Tabs Adhesive

### Health & Wellbeing

Material Ingredient Transparency

**Cradle to Cradle Certified® | Silver Level (Version 4.0)**  
**Health Product Declaration (HPD) | 1,000 ppm Disclosure**  
**Living Building Challenge (LBC) | Free of Red List Chemicals**  
**Declare | LBC Compliant**  
**NSF 140 | Gold**

Indoor Air Quality

**CRI Green Label Plus (GLP) | GLP9968**

### Climate Impact

Environmental Product Declaration (EPD)

**3rd Party Certified in Accordance with ISO14044, ISO14025 & EN15804**

Embodied Carbon (Cradle to Gate)

**5.1 kg CO<sub>2</sub>/m<sup>2</sup>**

Life-Cycle Carbon Emissions

**Carbon Neutral**

Total Recycled Content

**62% (Pre-Consumer 62% | Post-Consumer 0%)**

Product Packaging

**100% Recyclable**

### Global Product Assessment

**Singapore Green Label | Certified**

**CE Marking (EN 14041) | 3rd Party Certified**

**Environmental Guarantee\* | Re[turn] Reclamation Program\* | Through Our Environmental Guarantee, Shaw Pledges to Transport And Recycle Any Ecoworx Carpet.**

**Country of Origin\*\* | USA**

## Green Leed Contribution Credit

MR Credit: Building Product Disclosure and Optimization  
 Environmental Product Declarations - Option 1: Environmental Product Declaration (EPD)

**3rd Party Certified in Accordance with ISO14044, ISO14025 & EN15804**

MR Credit: Building Product Disclosure and Optimization  
 Material Ingredients - Option 1: Material Ingredient Reporting

**C2C Silver Level (Version 4.0) or HPD (Version 2.1)**

MR Credit: Building Product Disclosure and Optimization  
 Material Ingredients - Option 2: Material Ingredient Optimization

**C2C Silver Level (Version 4.0)**

MR Credit: Building Product Disclosure and Optimization  
 Sourcing of Raw Materials - Option 2: Leadership Extraction Practices

**Environmental Guarantee: Re[turn] Reclamation Program\* | Through Our Environmental Guarantee, Shaw Pledges to Transport And Recycle Any Ecoworx Carpet.**

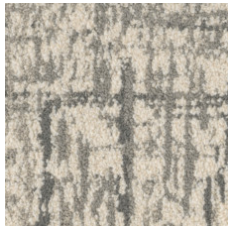
EQ Credit: Low Emitting Materials  
 Option 1: Product Category Calculations

**Green Label Plus Certification: GLP9968**

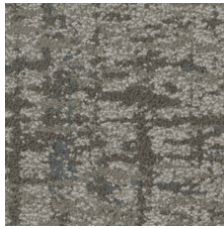
MR Credit: Interiors Life-Cycle Impact Reduction  
 Option 3: Design for Flexibility

**Ecoworx Tile with Lokdots Installation System**

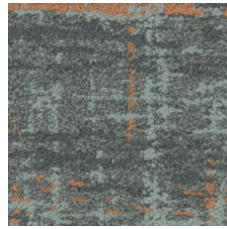
## Available Colorways



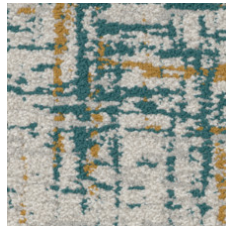
Flair 87100



Vitality 87105



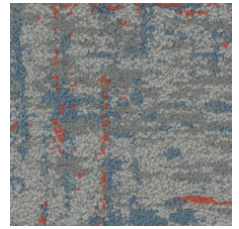
Flourish-Color 87326



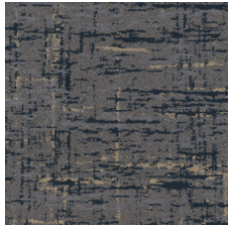
Vibrance-Color 87327



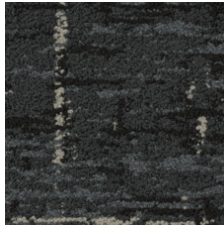
Vitality-Color 87375



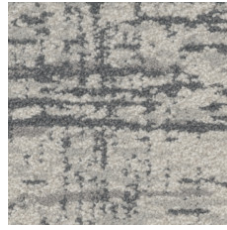
Moxie-Color 87411



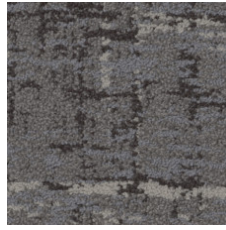
Brio-Color 87485



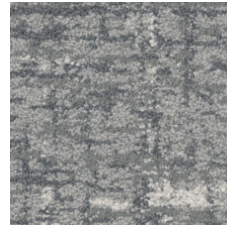
Gusto 87500



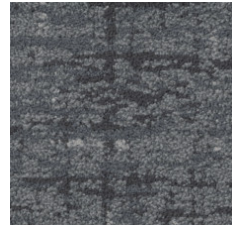
Vibrance 87510



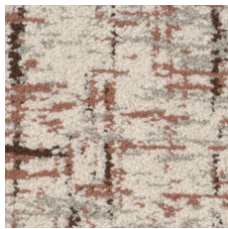
Brio 87518



Moxie 87535



Flourish 87580



Flair-Color 87675

 **Quick Ship 4 Weeks**

## Additional Information

\* To learn more about the recyclability of our products and our re[TURN], please visit [shawcontract.com/sustainability](http://shawcontract.com/sustainability).

\*\*Meets or exceeds all local and national regulations in country of manufacture.

\*\*\*This carpet is manufactured to be ADA compliant, but to be fully ADA compliant, the end-user must ensure the carpet is adhered to the floor and installed as outlined in the ADA standards.

[Installation Guidelines](#)

[Maintenance Guidelines](#)

Specifications are subject to nominal manufacturing variance. Material supply and/or manufacturing processes may necessitate changes without notice.

This product is an exclusive design and may not be duplicated in any manner. Use of this design in the creation of another product design is also strictly prohibited.

Visit [shawcontract.com/testing](http://shawcontract.com/testing) for more information.



Corporate Headquarters +1 800 257 7429 | +1 706 532 7984 | Atlanta +1 404 853 7429 | Bengaluru +91 80 6773 0202 | Beijing +86 10 6568 588 | Chicago +1 312 467 1331 | Dubai +971 4 584 6956 | Hong Kong +852 2623 0371 | Latin America (Miami) +1 305 827 5912 | London +44 207 961 4120 | Los Angeles +1 800 233 1614 | Melbourne +61 3 9939 8543 | Mexico City +55 5010 7600 | Mumbai +91 22 6284 5050 | Nantong +86 400 800 7429 | New York +1 212 953 7429 | Paris +33 (0) 1 81 22 44 39 | San Francisco +1 415 955 1920 | Santiago +562 2431 5000 x550 | São Paulo +55 11 3071 1702 | Shanghai +86 21 3338 4000 | Singapore +65 6733 1811 | Sydney +1 800 556 302