

Environmental Product Declaration



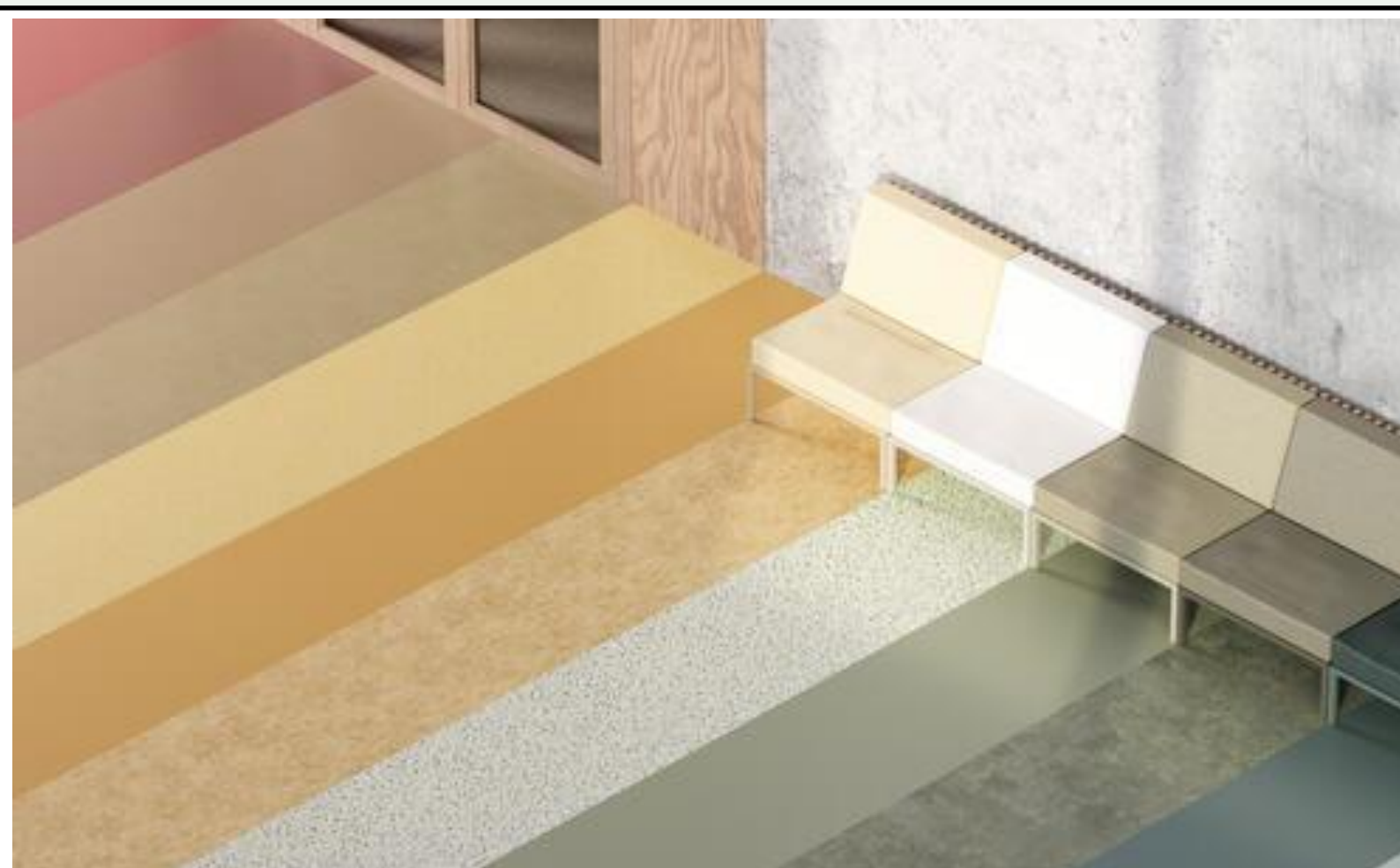
In accordance with ISO 21930:2017, ISO 14025:2006 and EN 15804:2012+A2:2019/AC:2021 for:

ACCZENT EXCELLENCE COMPACT + from **TARKETT**



Programme:	The International EPD® System, www.environdec.com
Programme operator:	EPD International AB
EPD registration number:	S-P-14477
Publication date:	2024-07-09
Valid until:	2029-07-09

An EPD should provide current information and may be updated if conditions change. The stated validity is therefore subject to the continued registration and publication at www.environdec.com



General information

Programme information

Programme:	The International EPD® System
Address:	EPD International AB Box 210 60 SE-100 31 Stockholm Sweden
Website:	www.environdec.com
E-mail:	info@environdec.com

Accountabilities for PCR, LCA and independent, third-party verification
Product Category Rules (PCR)
CEN standard EN 15804 serves as the Core Product Category Rules (PCR)
Product category rules (PCR): PCR 2019:14 version 1.3.3 and c-PCR-004 Resilient textile and laminate floor coverings (EN 16810)
PCR review was conducted by: The Technical Committee of the International EPD System. See www.environdec.com for a list of members. Review chair: Claudia A. Peña, University of Concepción, Chile. The review panel may be contacted via the Secretariat www.environdec.com/contact .
Life Cycle Assessment (LCA)
LCA accountability: Juliette Pouansi, Tarkett
Third-party verification
Independent third-party verification of the declaration and data, according to ISO 14025:2006: <input type="checkbox"/> EPD process certification <input checked="" type="checkbox"/> EPD verification Third party verifier: Olivia Djiriguian from LCIE Bureau Veritas. Approved by: The International EPD® System Procedure for follow-up of data during EPD validity involves third party verifier: <input checked="" type="checkbox"/> Yes <input type="checkbox"/> No

The EPD owner has the sole ownership, liability, and responsibility for the EPD.

EPDs within the same product category but registered in different EPD programmes, or not compliant with EN 15804, may not be comparable. For two EPDs to be comparable, they must be based on the same PCR (including the same version number) or be based on fully-aligned PCRs or versions of PCRs; cover products with identical functions, technical performances and use (e.g. identical declared/functional units); have equivalent system boundaries and descriptions of data; apply equivalent data quality requirements, methods of data collection, and allocation methods; apply identical cut-off rules and impact assessment methods (including the same version of characterisation factors); have equivalent content declarations; and be valid at the time of comparison. For further information about comparability, see EN 15804 and ISO 14025.

This EPD is a specific EPD.

Company information

Owner of the EPD: Tarkett

Contact: Myriam TRYJEFACZKA. myriam.Tryjefaczka@tarkett.com Tarkett La Défense, 1 Terrasse Bellini 92400 Paris

Description of the organisation:

With an international coverage and a wide range of products, Tarkett has over 130 years of experience in providing integrated solutions for floorings to professionals and end users.

Many of the most important architectural firms in the world and building professionals have chosen Tarkett for the value of its products and for its consultation and service abilities. Therefore, Tarkett floorings and sport surfaces are present in several prestigious architectural reference points. Tarkett offers integrated solutions for floorings, able to meet the particular needs of customers. Our wide range of designs, colors and models provides an infinite series of possibilities, contributing to create a positive environment and a better quality of life for people.

Tarkett operates with the utmost respect for the environment towards the realization of eco-friendly products.

Tarkett's commitment to the environment is woven throughout its business. Cradle-to-Cradle principles are, in fact, the basis of the design and production of every solution. Particularly, the lifecycle analysis is used to continuously improve the production process, and so the products until their use stage, disposal and recycling. The commitment to the environment is also proven by the accession to the Circular Economy 100 program, where Tarkett group, with a network of companies, is working to develop a circular economy model based on the reuse of materials and preservation of natural resources. The development of products that can be reused within internal production cycles, or external ones in case of other individuals, has been an integral part of the business strategy aimed at sustainability for many years. The WCM (World Class Manufacturing) management system has been developed in 2009, and it includes the environmental pillar aimed to the elimination of losses and to the growth of process efficiency.

Product-related or management system-related certifications: ISO 9001, ISO 14001, ISO 50001, WCM manufacturing site.

Name and location of production site(s): Sedan (France)

Product information

Product name: Acczent Excellence Compact +

Product identification: Heterogeneous poly (vinyl chloride) floor coverings (EN ISO 11638).

Product description: Acczent Excellence Compact + is a heterogeneous resilient floor covering developed by Tarkett. The service lifetime recommended by Tarkett is 25 years.

Geography: European technology and process coverage.

UN CPC code: APE/NAF - 2223Z

LCA information

Functional unit / declared unit: 1m² of floor covering with a reference service life (RSL) of 1 year for specified characteristics application and use areas according to ISO 11638 and EN ISO 10874.

Reference service life: 1 year.

Time representativeness: 2023.

Database(s) and LCA software used: Ecoinvent 3.9, Simapro 9.5

Description of system boundaries: Cradle to grave and module D (A + B + C + D)

Cut-off criteria : The cut-off criteria used for this study follow the guidelines set out in the PCR which conform to the EN 15804-A2, as following:

- All inputs and outputs to a (unit) process are included in the calculation where the data is available.
- A maximum of 1% of the total mass per unit process may be omitted.

- A maximum of 1% of the total renewable and non-renewable energy for a unit process may be omitted.

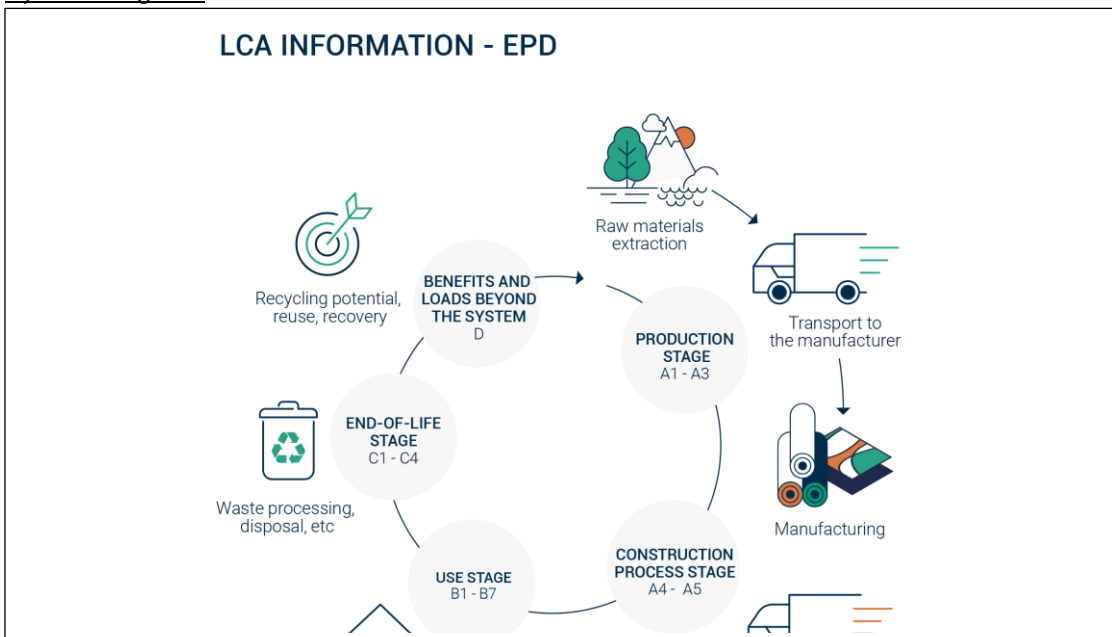
- A maximum of 5% of the total energy usage and mass per module may be omitted.

All input and output flows have been considered, including raw materials as per the product composition provided by the manufacturer and packaging of raw materials as well as the final product. Energy and water consumptions have also been considered at 100% according to the data provided.

Mass balance approaches (MBAs), to claim, for example, biobased, renewable, and/or recycled product content, are not applied.

EN 15804 reference package” based on EF 3.1 has been used.

System diagram:



More information: The product is classified in accordance with EN ISO 10874, EN 685, ISO 11683 and in reference to the FCSS (Floor Covering Standard Symbols) to be installed in various areas of application, such as: healthcare, education, commercial, education. The area of use according to the ISO 10874 is very heavy (34) for commercial classification and heavy (43) for industrial classification.

Product	Domestic Classification	Commercial Classification	Industrial Classification
Acczent Excellence Compact +	-	34 Very heavy commercial use	43 Heavy Industrial

Modules declared, geographical scope, share of specific data (in GWP-GHG indicator) and data variation:

	Product stage			Construction process stage		Use stage							End of life stage				Resource recovery stage	
	Raw material supply	Transport	Manufacturing	Transport	Construction installation	Use	Maintenance	Repair	Replacement	Refurbishment	Operational energy use	Operational water use	De-construction demolition	Transport	Waste processing	Disposal	Reuse-Recovery-Recycling-potential	
Module	A1	A2	A3	A4	A5	B1	B2	B3	B4	B5	B6	B7	C1	C2	C3	C4	D	
Modules declared	X	X	X	X	X	X	X	X	X	X	X	X	X	X	X	X	X	X
Geography	EU	EU	EU	EU	EU	-	EU	-	-	-	-	-	-	EU	EU	EU	EU	
Specific data used	20%	50%	100%	100%	100%	-	-	-	-	-	-	-	-	-	-	-	-	
Variation – products	0%			-	-	-	-	-	-	-	-	-	-	-	-	-	-	
Variation – sites	0%			European average for Tarkett		-	-	-	-	-	-	-	-	-	-	-	-	

Content information

Product	Thickness(mm)	Weight (kg/m ²)	Recycled content (%)
Acczent Excellence Compact +	2.15E+00	2.75E+00	27%

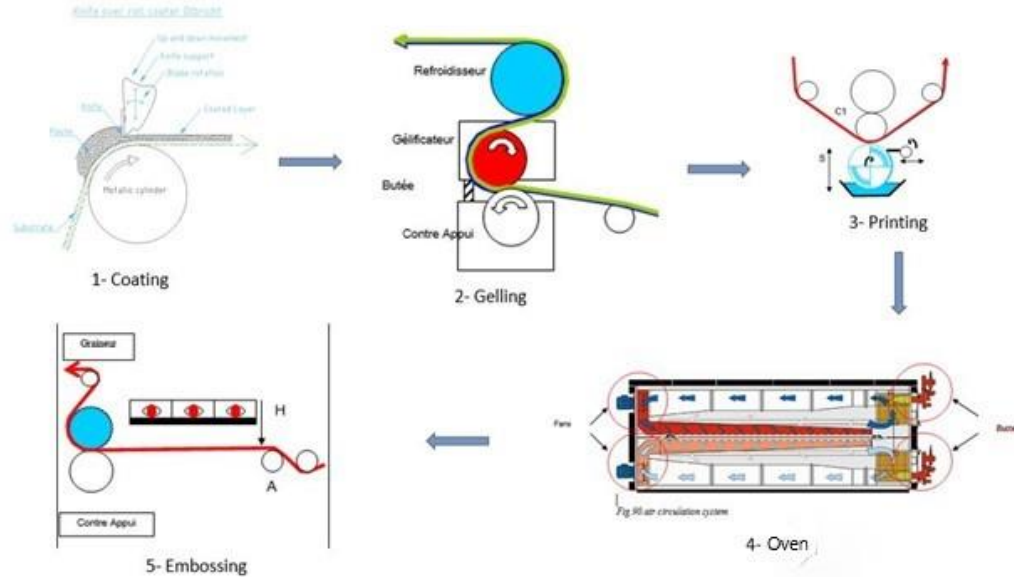
The components for Acczent Excellence Compact + are detailed here:

Acczent Excellence Compact +			
Product components	Weight, kg/m ²	Post-consumer material, weight-%	Biogenic material, weight-% and kg C/kg
PVC Emulsion	9.68E-01	0%	0%
Plasticizers	4.14E-01	0%	0%
Epoxidised soya bean oil	1.80E-02	0%	83% 0.0129
Mineral fillers	1.70E-01	0%	0%
Stabilizer CaZn	1.80E-02	0%	0%
Pigments	3.50E-02	0%	0%
Surface Treatment	4.30E-02	0%	0%
Impact modifiers	1.26E-04	0%	0%
Calendered Underlay	1.00E+00	0%	0%
TOTAL	2.75E+00	0%	2% 0.0129
Packaging materials	Weight, kg/m ²	Weight-% (versus the product)	Weight biogenic carbon, kg C/kg
Product Packaging Cardboard	1.64E-02	0.6%	0.005
Product Packaging Paper Foil	8.87E-03	0.3%	0.010
Product Packaging PP (Disc)	1.70E-03	0.1%	-
Product Packaging PP (Plug)	1.70E-3	0.1%	-
TOTAL	2.87E-02	1%	0.015

Product manufacturing

Production process

The following figures show the production process of heterogeneous flooring :



Production waste

Waste type	Amount	Unit
Non-hazardous waste to external recycling	3.57E-01	kg/m ²
Hazardous waste to external treatment	3.34E-03	kg/m ²

NB: Post manufacturing recycling concerns the recycling of the losses inside the plant production. Therefore, there is no end-of-life impact on losses (except the recycling preparation).

Electricity GWP-GHG

Plant	Ecoinvent Module	KgCO ₂ eq/kWh
Sedan	Electricity, medium voltage {FR} market for Cut-off, U	7.93E-02

Health, safety and environmental aspects during production

Acczent Excellence Compact + production site complies with the ISO 14001 Environmental Management System and the ISO 9001 Quality Management System.

Delivery and installation

Delivery

The average distribution distance between the factory and the installation site is 973 km. It has been calculated considering the average distance between European countries where Tarkett is selling the Accent Excellence Compact + products and the factory plant in Sedan (France). The distribution is made by truck.

Installation

The different parts of the flooring are cut to fit the surface to be covered and they are arranged together so that they can fit perfectly between them on the floor. The different parts of the flooring are glued on the subfloor then they are welded together.

Description	Amount	Unit
Electricity consumption	4.00E-02	kWh/m ²
Acrylic adhesive	2.50E-01	kg/m ²

Waste

During the installation approximately 10% of the flooring is lost as off-cuts. All flooring losses are sent to recycling. Thanks to the ReStart program, Tarkett offers to all of its customer flooring installers a free take-back system for installation off-cuts, including equipment, logistics and recycling. This analysis therefore considers a recycling scenario of the offcut.

Packaging

50 % of the packaging materials goes to incineration and 50 % goes to landfill.

Use Stage

Reference Service Life (RSL)

For this product, the stated RSL is 1 year. It should be noted, however, that the service life of a Heterogenous polyvinylchloride floor covering may vary depending on the amount and nature of floor traffic and the type and frequency of maintenance. The manufacturer has provided this service life on the basis of his experience of flooring manufacture and supply. This RSL is applicable as long as the product use complies with that defined by ISO 14041 and ISO10874 in accordance with the product's classification. **The service lifetime recommended by Tarkett is 25 years.**

Cleaning and maintenance

Cleaning regime is based on traditional cleaning protocol integrating manual and mechanical operations. Depending on premises considered, these consumptions may vary. The considered regime fits high traffic areas. The maintenance scenario is :

- **Common maintenance : 2 times a week**
- **Periodic maintenance : once every 2 weeks**
- **Exceptionnal maintenance : 2 times a year**

Description	Amount	Unit
Electricity consumption	6.02E-02	kWh/year/m ²
Water consumption	5.05E+00	L/year/m ²
Detergent consumption	6.03E-02	L/year/m ²

Prevention of structural damage

To avoid excessive wear, usage should be restricted to the stated areas of application as outlined by the norm ISO 10874.

End of Life

Environmental impacts of landfilling are presented in module C. Tarkett also modeled an alternative scenario, incineration. The results can be found in page 15.

Landfilling /L

Landfilling waste is still a prominent waste management scenario. This option is however not recommended by Tarkett. Environmental impacts of landfilling are presented in module **C/L**.

Incineration with energy recovery /I

Incineration with energy recovery is a rising waste management method in many of the countries in which Acczent Excellence Compact + is sold. While Tarkett wishes to recycle 100% of products sold, incineration with energy recovery is an alternative option if recycling is impossible. Environmental impacts of incineration with energy recovery are presented in module **C/I** in page 15

Benefits and loads beyond system boundary

Landfilling /L

Benefits accounted in this scenario exclusively come from installation offsets recycling and are presented in **D/L**

Incineration with energy recovery /I

Benefits from installation offsets recycling and incineration energy recovery are calculated in **D/I** on page 15

Results

The estimated impact results are only relative statements, which do not indicate the endpoints of the impact categories, exceeding threshold values, safety margins and/or risks.

Disclaimer : The results of modules A1-A3 should not be used without considering the results of module C.

Environmental Information

Potential environmental impact

Results per functional unit in case of landfilling – Accent Excellence Compact +

Indicator	Unit	A1-A3	A4	A5	B1	B2	B3	B4	B5	B6	B7	C1/L	C2/L	C3/L	C4/L	D/L
GWP-total	kg CO ₂ eq.	5.57E+00	5.34E-01	1.05E+00	0.00E+00	7.52E-02	0.00E+00	0.00E+00	0.00E+00	0.00E+00	0.00E+00	0.00E+00	1.75E-02	0.00E+00	2.59E-01	-3.04E-01
GWP-fossil	kg CO ₂ eq.	5.48E+00	5.33E-01	9.72E-01	0.00E+00	6.97E-02	0.00E+00	0.00E+00	0.00E+00	0.00E+00	0.00E+00	0.00E+00	1.75E-02	0.00E+00	2.24E-01	-3.04E-01
GWP- biogenic	kg CO ₂ eq.	5.86E-02	1.70E-04	7.19E-02	0.00E+00	5.44E-04	0.00E+00	0.00E+00	0.00E+00	0.00E+00	0.00E+00	0.00E+00	5.55E-06	0.00E+00	3.47E-02	2.75E-03
GWP- Luluc	kg CO ₂ eq.	3.34E-02	2.62E-04	3.71E-03	0.00E+00	4.89E-03	0.00E+00	0.00E+00	0.00E+00	0.00E+00	0.00E+00	0.00E+00	8.54E-06	0.00E+00	7.22E-06	-2.46E-03
ODP	kg CFC 11 eq.	2.74E-06	1.16E-08	2.81E-07	0.00E+00	2.69E-09	0.00E+00	0.00E+00	0.00E+00	0.00E+00	0.00E+00	0.00E+00	3.80E-10	0.00E+00	9.20E-10	-2.01E-07
AP	mol H ⁺ eq.	3.08E-02	1.72E-03	4.88E-03	0.00E+00	4.63E-04	0.00E+00	0.00E+00	0.00E+00	0.00E+00	0.00E+00	0.00E+00	5.69E-05	0.00E+00	2.09E-04	-1.87E-03
EP-freshwater	kg P eq	1.41E-03	3.75E-05	2.61E-04	0.00E+00	2.59E-05	0.00E+00	0.00E+00	0.00E+00	0.00E+00	0.00E+00	0.00E+00	1.22E-06	0.00E+00	2.15E-06	-9.68E-05
EP-freshwater	kg PO ₄ eq	4.31E-03	1.15E-04	8.00E-04	0.00E+00	7.95E-05	0.00E+00	0.00E+00	0.00E+00	0.00E+00	0.00E+00	0.00E+00	3.75E-06	0.00E+00	6.60E-06	-2.97E-04
EP-marine	kg N eq.	1.07E-02	5.87E-04	1.51E-03	0.00E+00	2.43E-04	0.00E+00	0.00E+00	0.00E+00	0.00E+00	0.00E+00	0.00E+00	1.96E-05	0.00E+00	1.22E-03	-4.55E-04
EP-terrestrial	mol N eq.	6.34E-02	6.19E-03	1.00E-02	0.00E+00	1.13E-03	0.00E+00	0.00E+00	0.00E+00	0.00E+00	0.00E+00	0.00E+00	2.07E-04	0.00E+00	9.28E-04	-2.29E-03
POCP	kg NMVOC eq.	2.96E-02	2.57E-03	4.60E-03	0.00E+00	2.95E-04	0.00E+00	0.00E+00	0.00E+00	0.00E+00	0.00E+00	0.00E+00	8.50E-05	0.00E+00	4.03E-04	-1.27E-03
ADP-minerals&metals*	kg Sb eq.	6.15E-05	1.76E-06	9.47E-06	0.00E+00	7.29E-07	0.00E+00	0.00E+00	0.00E+00	0.00E+00	0.00E+00	0.00E+00	5.75E-08	0.00E+00	6.45E-08	-4.42E-06
ADP-fossil*	MJ	1.41E+02	7.57E+00	2.28E+01	0.00E+00	2.01E+00	0.00E+00	0.00E+00	0.00E+00	0.00E+00	0.00E+00	0.00E+00	2.48E-01	0.00E+00	7.27E-01	-7.75E+00
WDP	m ³	6.56E+00	3.14E-02	9.73E-01	0.00E+00	1.84E-02	0.00E+00	0.00E+00	0.00E+00	0.00E+00	0.00E+00	0.00E+00	1.02E-03	0.00E+00	3.27E-03	-4.70E-01

Acronyms

GWP-fossil = Global Warming Potential fossil fuels; GWP-biogenic = Global Warming Potential biogenic; GWP-luluc = Global Warming Potential land use and land use change; ODP = Depletion potential of the stratospheric ozone layer; AP = Acidification potential, Accumulated Exceedance; EP-freshwater = Eutrophication potential, fraction of nutrients reaching freshwater end compartment; EP-marine = Eutrophication potential, fraction of nutrients reaching marine end compartment; EP-terrestrial = Eutrophication potential, Accumulated Exceedance; POCP = Formation potential of tropospheric ozone; ADP-minerals&metals = Abiotic depletion potential for non-fossil resources; ADP-fossil = Abiotic depletion for fossil resources potential; WDP = Water (user) deprivation potential, deprivation-weighted water consumption

Environmental Information

Potential environmental impact

Results per functional unit in case of landfilling – Accent Excellence Compact +

Indicator	Unit	A1-A3	A4	A5	B1	B2	B3	B4	B5	B6	B7	C1/L	C2/L	C3/L	C4/L	D/L
PERE	MJ	1.83E+01	1.18E-01	2.28E+00	0.00E+00	4.49E-01	0.00E+00	0.00E+00	0.00E+00	0.00E+00	0.00E+00	0.00E+00	3.84E-03	0.00E+00	3.09E-02	-9.90E-01
PERM	MJ	4.67E-01	0.00E+00	4.67E-02	0.00E+00	0.00E+00	0.00E+00	0.00E+00	0.00E+00	0.00E+00	0.00E+00	0.00E+00	0.00E+00	0.00E+00	0.00E+00	-9.72E-03
PERT	MJ	1.87E+01	1.18E-01	2.33E+00	0.00E+00	4.49E-01	0.00E+00	0.00E+00	0.00E+00	0.00E+00	0.00E+00	0.00E+00	3.84E-03	0.00E+00	3.09E-02	-1.00E+00
PENRE	MJ	1.41E+02	7.57E+00	2.28E+01	0.00E+00	2.02E+00	0.00E+00	0.00E+00	0.00E+00	0.00E+00	0.00E+00	0.00E+00	2.48E-01	0.00E+00	7.27E-01	-7.79E+00
PENRM	MJ	4.81E-01	0.00E+00	4.81E-02	0.00E+00	0.00E+00	0.00E+00	0.00E+00	0.00E+00	0.00E+00	0.00E+00	0.00E+00	0.00E+00	0.00E+00	0.00E+00	-2.52E-02
PENRT	MJ	1.42E+02	7.57E+00	2.29E+01	0.00E+00	2.02E+00	0.00E+00	0.00E+00	0.00E+00	0.00E+00	0.00E+00	0.00E+00	2.48E-01	0.00E+00	7.27E-01	-7.81E+00
SM	kg	5.98E-01	0.00E+00	5.98E-02	0.00E+00	0.00E+00	0.00E+00	0.00E+00	0.00E+00	0.00E+00	0.00E+00	0.00E+00	0.00E+00	0.00E+00	0.00E+00	1.68E-01
RSF	MJ	0.00E+00	0.00E+00	0.00E+00	0.00E+00	0.00E+00	0.00E+00	0.00E+00	0.00E+00	0.00E+00	0.00E+00	0.00E+00	0.00E+00	0.00E+00	0.00E+00	0.00E+00
NRSF	MJ	0.00E+00	0.00E+00	0.00E+00	0.00E+00	0.00E+00	0.00E+00	0.00E+00	0.00E+00	0.00E+00	0.00E+00	0.00E+00	0.00E+00	0.00E+00	0.00E+00	0.00E+00
FW	m ³	1.21E-01	1.08E-03	1.61E-02	0.00E+00	-1.89E-03	0.00E+00	0.00E+00	0.00E+00	0.00E+00	0.00E+00	0.00E+00	3.52E-05	0.00E+00	8.86E-04	-8.19E-03

Acronyms

PERE = Use of renewable primary energy excluding renewable primary energy resources used as raw materials; PERM = Use of renewable primary energy resources used as raw materials; PERT = Total use of renewable primary energy resources; PENRE = Use of non-renewable primary energy excluding non-renewable primary energy resources used as raw materials; PENRM = Use of non-renewable primary energy resources used as raw materials; PENRT = Total use of non-renewable primary energy re-sources; SM = Use of secondary material; RSF = Use of renewable secondary fuels; NRSF = Use of non-renewable secondary fuels; FW = Use of net fresh water

Waste production and output flows

Waste production

Results per functional unit in case of landfilling – Acczent Excellence Compact +																
Indicator	Unit	A1-A3	A4	A5	B1	B2	B3	B4	B5	B6	B7	C1/L	C2/L	C3/L	C4/L	D/L
Hazardous waste disposed	kg	3.21E-01	7.23E-03	4.56E-02	0.00E+00	3.51E-03	0.00E+00	0.00E+00	0.00E+00	0.00E+00	0.00E+00	0.00E+00	2.36E-04	0.00E+00	8.37E-04	-1.93E-02
Non-hazardous waste disposed	kg	2.51E+00	4.31E-01	5.07E-01	0.00E+00	3.81E-02	0.00E+00	0.00E+00	0.00E+00	0.00E+00	0.00E+00	0.00E+00	1.41E-02	0.00E+00	3.13E+00	-1.61E-01
Radioactive waste disposed	kg	4.23E-04	2.47E-06	5.45E-05	0.00E+00	1.06E-05	0.00E+00	0.00E+00	0.00E+00	0.00E+00	0.00E+00	0.00E+00	8.04E-08	0.00E+00	4.06E-07	-1.12E-05

Output flows

Results per functional unit in case of landfilling – Acczent Excellence Compact +																
Indicator	Unit	A1-A3	A4	A5	B1	B2	B3	B4	B5	B6	B7	C1/L	C2/L	C3/L	C4/L	D/L
Components for re-use	kg	0.00E+00	0.00E+00	0.00E+00	0.00E+00	0.00E+00	0.00E+00	0.00E+00	0.00E+00	0.00E+00	0.00E+00	0.00E+00	0.00E+00	0.00E+00	0.00E+00	0.00E+00
Material for recycling	kg	1.01E+00	0.00E+00	3.85E-01	0.00E+00	0.00E+00	0.00E+00	0.00E+00	0.00E+00	0.00E+00	0.00E+00	0.00E+00	0.00E+00	0.00E+00	0.00E+00	0.00E+00
Materials for energy recovery	kg	0.00E+00	0.00E+00	0.00E+00	0.00E+00	0.00E+00	0.00E+00	0.00E+00	0.00E+00	0.00E+00	0.00E+00	0.00E+00	0.00E+00	0.00E+00	0.00E+00	0.00E+00
Exported energy	MJ	0.00E+00	0.00E+00	0.00E+00	0.00E+00	0.00E+00	0.00E+00	0.00E+00	0.00E+00	0.00E+00	0.00E+00	0.00E+00	0.00E+00	0.00E+00	0.00E+00	0.00E+00

Additional indicator

Results per functional unit in case of landfilling – Acczent Excellence Compact +																
Indicator	Unit	A1-A3	A4	A5	B1	B2	B3	B4	B5	B6	B7	C1/L	C2/L	C3/L	C4/L	D/L
GWP-fossil	kg CO ₂ eq.	5.51E+00	5.33E-01	9.75E-01	0.00E+00	7.46E-02	0.00E+00	0.00E+00	0.00E+00	0.00E+00	0.00E+00	0.00E+00	1.75E-02	0.00E+00	2.24E-01	-3.07E-01

¹ GWP-GHG is the sum of GWP-Fossil and GWP-LULUC indicator

Additional information – Potential impacts and flows in case of incineration

Results per functional or declared unit in case of incineration - Accent Excellence Compact +						
Indicator	Unit	C1/I	C2/I	C3/I	C4/I	D/I
GWP-total	kg CO ₂ eq.	0.00E+00	5.83E-02	5.46E+00	1.61E-03	-1.93E+00
GWP-fossil	kg CO ₂ eq.	0.00E+00	5.82E-02	5.42E+00	1.61E-03	-1.92E+00
GWP- biogenic	kg CO ₂ eq.	0.00E+00	1.85E-05	4.29E-02	8.39E-07	-2.06E-03
GWP- Luluc	kg CO ₂ eq.	0.00E+00	2.85E-05	6.40E-04	4.88E-07	-3.64E-03
AP	mol H ⁺ eq.	0.00E+00	1.27E-09	1.34E-07	6.74E-10	-2.69E-07
ODP	kgCFC11 eq	0.00E+00	1.90E-04	4.57E-03	1.55E-05	-7.45E-03
EP-freshwater	kg P eq	0.00E+00	4.07E-06	2.64E-04	1.68E-07	-6.33E-04
EP-freshwater	kg PO ₄ eq	0.00E+00	1.25E-05	8.10E-04	5.16E-07	-1.94E-03
EP-marine	kg N eq.	0.00E+00	6.53E-05	1.40E-03	5.38E-06	-1.39E-03
EP-terrestrial	mol N eq.	0.00E+00	6.89E-04	1.28E-02	5.89E-05	-1.16E-02
POCP	kg NMVOC eq.	0.00E+00	2.83E-04	3.90E-03	1.71E-05	-5.04E-03
ADP-minerals&metals*	kg Sb eq.	0.00E+00	1.92E-07	1.23E-05	1.50E-08	-6.04E-06
ADP-fossil*	MJ	0.00E+00	8.25E-01	9.53E+00	4.58E-02	-3.29E+01
WDP	m ³	0.00E+00	3.41E-03	8.50E+00	2.05E-03	-5.96E-01
Results per functional or declared unit in case of incineration - Accent Excellence Compact +						
Indicator	Unit	C1/I	C2/I	C3/I	C4/I	D/I
PERE	MJ	0.00E+00	1.28E-02	8.85E-01	3.70E-04	-2.97E+00
PERM	MJ	0.00E+00	0.00E+00	0.00E+00	0.00E+00	-9.72E-03
PERT	MJ	0.00E+00	1.28E-02	8.85E-01	3.70E-04	-2.98E+00
PENRE	MJ	0.00E+00	8.25E-01	9.53E+00	4.58E-02	-3.29E+01
PENRM	MJ.	0.00E+00	0.00E+00	0.00E+00	0.00E+00	-2.52E-02
PENRT	MJ	0.00E+00	8.25E-01	9.53E+00	4.58E-02	-3.29E+01
SM	kg	0.00E+00	0.00E+00	0.00E+00	0.00E+00	1.68E-01
RSF	MJ	0.00E+00	0.00E+00	0.00E+00	0.00E+00	0.00E+00
NRSF	MJ	0.00E+00	0.00E+00	0.00E+00	0.00E+00	0.00E+00
FW	m ³	0.00E+00	1.17E-04	2.59E-01	4.89E-05	-1.69E-02
Results per functional or declared unit in case of incineration - Accent Excellence Compact +						
Indicator	Unit	C1/I	C2/I	C3/I	C4/I	D/I
Hazardous waste disposed	kg	0.00E+00	7.86E-04	1.64E+00	2.70E-05	-3.70E-02
Non-hazardous waste disposed	kg	0.00E+00	4.69E-02	4.40E-01	3.11E-01	-3.95E-01
Radioactive waste disposed	kg	0.00E+00	2.68E-07	1.75E-05	3.01E-07	-8.16E-05
Results per functional or declared unit in case of incineration - Accent Excellence Compact +						
Indicator	Unit	C1/I	C2/I	C3/I	C4/I	D/I
Components for re-use	kg	0.00E+00	0.00E+00	0.00E+00	0.00E+00	0.00E+00
Material for recycling	kg	0.00E+00	0.00E+00	0.00E+00	0.00E+00	0.00E+00
Materials for energy recovery	kg	0.00E+00	0.00E+00	1.52E+00	0.00E+00	0.00E+00
Exported energy. electricity	MJ	0.00E+00	0.00E+00	1.45E+01	0.00E+00	0.00E+00
Exported energy. thermal	MJ	0.00E+00	0.00E+00	1.08E+01	0.00E+00	0.00E+00

References

General Programme Instructions of the International EPD[®] System. Version 4.0.

PCR 2019:14. Version 1.3.3 and c-PCR-004 Resilient textile and laminate floor coverings (EN 16810)

