

Granit Multisafe

Green Building Card



SUSTAINABILITY ATTRIBUTES

Circular Economy and Climate Change



RECYCLABLE
OFFCUTS
& POST-USE



25,5%
RECYCLED
CONTENT

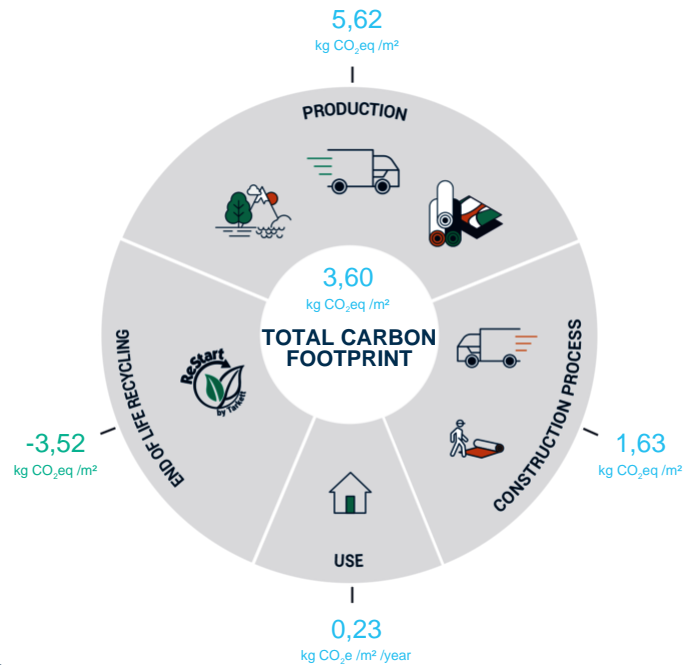
Good Materials



Indoor Air Quality



LIFE CYCLE ASSESSMENT



LCA Information above is based on the product's Environmental Product Declaration (EPD)
EPD Number : S-P-01346
EPD comparison should be conducted by experts only



CONTRIBUTION TO GREEN BUILDING CERTIFICATIONS



BREEAM INTERNATIONAL NEW CONSTRUCTION 2016

CERTIFICATION CRITERIA	CERTIFICATION REQUIREMENTS	THE TARKETT RESPONSE
HEA 01 - Visual Comfort	Best practices in daylighting and artificial lighting design <i>No specific requirement at product level</i>	
HEA 02 - Indoor Air Quality	TVOC at 28 days $\leq 1000 \mu\text{g}/\text{m}^3$ and Formaldehyde at 28 days $\leq 60 \mu\text{g}/\text{m}^3$	
MAT 01 - Life Cycle Impacts	EPDs available	
MAT 03 - Responsible Sourcing of Construction Products	ISO 14001 certified	
MAT 06 - Material Efficiency	Ingredients verified by a third party or Product composed of recycled content	
WST 01 - Waste Management	Avoid sending waste to landfill <i>No specific requirement at product level</i>	



CONTRIBUTION TO GREEN BUILDING CERTIFICATIONS



LEED v4.1 Building Design and Construction

CERTIFICATION CRITERIA	CERTIFICATION REQUIREMENTS	THE TARKETT RESPONSE
MR - Environmental Product Declarations	EPDs available	
MR - Sourcing of Raw Materials	Signatory of the UN Global Compact or Product composed of recycled content or Recyclable at end-of-life or Bio-sourced materials	
MR - Material Ingredients	Ingredients verified by a third party or Cradle to Cradle® certification at bronze level or higher	
MR - Construction and Demolition Waste Management	Avoid sending waste to landfill <i>No specific requirement at product level</i>	
EQ - Low Emitting Materials and Indoor Air Quality Assessment	TVOC at 28 days $\leq 1000 \mu\text{g}/\text{m}^3$ and Formaldehyde at 28 days $\leq 10 \mu\text{g}/\text{m}^3$ Decrease the concentration of particles in the air	
EQ - Interior Lighting and Daylight	Best practices in daylighting and artificial lighting design <i>No specific requirement at product level</i>	



CONTRIBUTION TO GREEN BUILDING CERTIFICATIONS



WELL BUILDING STANDARD v2

CERTIFICATION CRITERIA	CERTIFICATION REQUIREMENTS	THE TARKETT RESPONSE
L02 - Visual Lighting Design and L 06 - Daylight Simulation	Best practices in daylighting and artificial lighting design <i>No specific requirement at product level</i>	VISUAL COMFORT
X01, X02 and X05 - Material Restrictions, Interior Hazardous Materials Management and Enhanced Material Restrictions	Asbestos < 1000 ppm Halogenated flame retardants < 100 ppm PFAS < 100 ppm Lead < 100 ppm Cadmium < 100 ppm Mercury < 100 ppm Orthophthalates < 100 ppm <i>Higher amounts are allowed if required by local code</i>	MHS OF EPA MATERIAL · HEALTH · STATEMENT Verify compliance according to chemicals displayed in MHS. Evaluation threshold at least 100 ppm (0.01%) of the final product.
X06 - VOC Restrictions	TVOC at 28 days ≤ 1000 µg/m ³ and Formaldehyde at 28 days ≤ 124 µg/m ³ (E1)	FLOOR SCORE LOW FORMALDEHYDE EMISSIONS VOC ≤ 10 µg/m ³ OPTIMAL INDOOR AIR QUALITY M1 EMISSION CLASS FOR BUILDING MATERIALS
X07 - Materials Transparency	Ingredients verified by a third party or Cradle to Cradle® certification at bronze level or higher	MHS OF EPA MATERIAL · HEALTH · STATEMENT
X08 - Materials Optimization	Ingredients verified by a third party or Cradle to Cradle® certification at silver level or higher	MHS OF EPA MATERIAL · HEALTH · STATEMENT

SKA RATING OFFICES 1.2



CERTIFICATION CRITERIA	CERTIFICATION REQUIREMENTS	THE TARKETT RESPONSE
Soft flooring	Recycled content > 50% or Renewable or natural content > 50% or Cradle to Cradle® certification at silver level or higher or EPDs available	EPD®
Reduce floor finishes sent to landfill	Avoid sending waste to landfill <i>No specific requirement at product level</i>	RECYCLABLE OFFCUTS & POST-USE Restart Ready
Low VOC finishes	TVOC at 28 days ≤ 100 µg/m ³ and Formaldehyde at 28 days ≤ 10 µg/m ³ or Ingredient disclosure	FLOOR SCORE LOW FORMALDEHYDE EMISSIONS VOC ≤ 10 µg/m ³ OPTIMAL INDOOR AIR QUALITY M1 EMISSION CLASS FOR BUILDING MATERIALS
Daylighting	Best practices in daylighting design <i>No specific requirement at product level</i>	VISUAL COMFORT





DGNB System - New buildings Version 2020 International

CERTIFICATION CRITERIA	CERTIFICATION REQUIREMENTS	THE TARKETT RESPONSE
ENV1.1 - Building Life Cycle Assessment	EPDs available	
ENV1.2 - Local Environment Impact	Textile flooring - Quality level 4 TVOC at 28 days ≤ 100 µg/m ³ SVHC < 0,1% Biocidal products only in accordance with 528/2012/EC Resilient flooring - Quality level 4 TVOC at 28 days ≤ 300 µg/m ³ SVHC < 0,1% Chlorinated paraffins < 0,1% Phthalates that are toxic to reproduction < 0,1% No use of lead and cadmium compounds	<p>Verify compliance according to chemicals displayed in MHS. Evaluation threshold at least 100 ppm (0.01%) of the final product. Manufacturer declaration may also be provided - contact TARKETT's sales representative.</p>
ENV1.3 - Sustainable Resource Extraction	Product composed of open-loop or post-consumer recycled content	
ENV2.2 - Potable Water Demand and Waste Water Volume	Encourage the reduction of potable water demand <i>No specific requirement at product level</i>	
SOC1.2 - Indoor Air Quality	Indoor air quality measurement after construction work <i>No specific requirement at product level</i>	
SOC1.4 - Visual Comfort	Best practices in daylighting and artificial lighting design <i>No specific requirement at product level</i>	
TEC1.5 - Ease of Cleaning Building Components	Verifiable results in reduced life cycle costs for cleaning <i>No specific requirement at product level</i>	
TEC1.6 - Ease of Recovering and Recycling	Efficient use of resources	



CONTRIBUTION TO GREEN BUILDING CERTIFICATIONS



HQE BÂTIMENT DURABLE v4

CERTIFICATION CRITERIA	CERTIFICATION REQUIREMENTS	THE TARKETT RESPONSE
Qualité de l'air intérieur	Mesure de polluants dans l'air après travaux	  
Confort Visuel	Bonnes pratiques sur l'éclairage naturel et artificiel <i>Pas d'exigence spécifique au niveau des produits</i>	
Eau	Limiter la consommation d'eau potable <i>Pas d'exigence spécifique au niveau des produits</i>	
Déchets	Eviter l'envoi à la décharge <i>Pas d'exigence spécifique au niveau des produits</i>	 
Economie locale	Composant issu d'une filière de valorisation matière des déchets	

Green Star - Interiors v1.3



CERTIFICATION CRITERIA	CERTIFICATION REQUIREMENTS	THE TARKETT RESPONSE
Indoor Pollutants	TVOC at 28 days $\leq 1000 \mu\text{g}/\text{m}^3$ and Formaldehyde at 28 days $\leq 10 \mu\text{g}/\text{m}^3$	  
Lighting and Visual Comfort	Best practices in daylighting and artificial lighting design <i>No specific requirement at product level</i>	
Life Cycle Assessment	EPDs available	
Responsible Building Materials	Responsibly sourced materials, including best practice guidelines for PVC	 
Construction and Demolition Waste	Avoid sending waste to landfill <i>No specific requirement at product level</i>	 



CONTRIBUTION TO GREEN BUILDING CERTIFICATIONS



MILJÖBYGGNAD

CERTIFICATION CRITERIA	CERTIFICATION REQUIREMENTS	THE TARKETT RESPONSE
<p>Indicator 13 (V3.0 & 3.1) Indicator 15 (V4.0)</p>	<p>Composition declared according to CLP/REACH None classified compounds are publicly declared if they make up >2% of composition</p>	<p> <i>See available eBVD for Swedish adaptation.</i></p>
<p>Indicator 14 (V3.0 & 3.1) Indicator 9 (V4.0)</p>	<p>Hazardous classified below CLP guidelines TVOC at 28 days ≤ 1000 µg/m³ Formaldehyde at 28 days ≤ 10 µg/m³</p>	<p>    <i>See available eBVD for Swedish adaptation.</i></p>
<p>Indicator 13 (V4.0)</p>	<p>At least 20% recycled content</p>	<p></p>

The Green Building Card is used as a reference only for projects at design stage. This document by itself is not enough to validate the Green Building Certification requirements and manufacturer's documentation must be provided. In order to access the product certificates, please contact your TARKETT's sales representative.

