



**JACOBSEN  
BRINGS YOU**

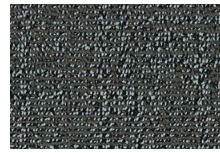
**Tricot  
Carpet Tile**

## Tandus Tricot, Modular Carpet Commercial

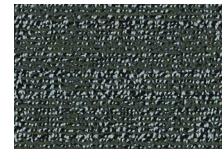
Suitable for all commercial applications such as:

- > Education
- > Hospitality
- > Workplace
- > Healthcare
- > Retail

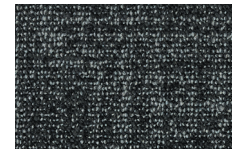
The information in this data sheet is correct at date of publication however, due to Tarkett's commitment for ongoing product improvement, we reserve the right to change this information without notice. Please note that Tarkett's instructions regarding installation, cleaning and maintenance must be observed.



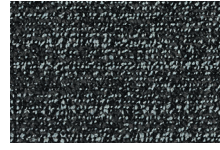
Bobbin 26501



Bourne 26515



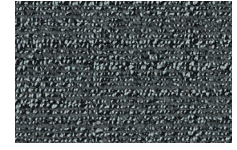
Fields 26510



Loam 26509



Midnight 26520



Saturated 26508

### Specifications

	Standards	Tandus Tricot
Product Construction		Textured Loop
Yarn Type		100% Solution Dyed Type 6 Nylon
Gauge		1/13"
Primary Backing		Synthetic Non-Woven
Secondary Backing		ECOBOND™ recycled content backing
Stitches/length	ASTM D-148	33.0/10cm
Total Pile Weight		644.2 g/m <sup>2</sup>   19 oz/yd <sup>2</sup>
Total Weight		3911 g/m <sup>2</sup>
Surface Pile Density	UM44D	281.2 kg/m <sup>3</sup>
Thickness of pile above substrate	ASTM D-148	3.8mm (+/- 0.5mm)
Total Thickness		6.3mm (+/- 0.5mm)
Dimension		1000mm x 250mm
Installation Methods		Ashlar, Vertical Ashlar, Herringbone
Tiles per box/area		16/4m <sup>2</sup>
Warranty		15 years

### Performance Characteristics

	Standards	Tandus Tricot
Reaction to fire	ISO AS 9239-1: 2010	Critical Radiant Flux 2.7kW/m <sup>2</sup> Smoke - 232 %.min
ACCS Grading		CEHD & Stairs
Electrostatic properties	AATCC 134	<2 kV
Colour fastness	AATCC 16E	≥4

### Recommended specification clauses for your project

- Product must be Tarkett carpet plank number starting with 631003.
- 100% Solution Dyed Nylon carpet planks 1000mm x 250mm with ECOBOND™ backing.
- 15 year commercial manufacturer's warranty.
- Must be installed as per manufacturer's instructions.

Disclaimer: The colour images provided are indicative only and installed for creative purposes and not according to technical specifications. Please refer to Tarkett Tandus installation instructions for guidance.



**Jacobsen® | Tarkett**

Talk to one of our experts, or visit our website:

0800 800 460 | customer.services@jacobsen.co.nz | jacobsen.co.nz

